

Converting Colors

Decimal(13608315)

Have a look what the booklet for
Decimal(13608315) contains.

Decimal(13608315)	3
<i>Conversions</i>	4
<i>Details</i>	6
<i>Harmonies</i>	11
<i>Previews</i>	23
<i>Color Blindness Simulation</i>	26
<i>CSS Examples</i>	29

Color

Decimal(13608315)

Conversions

Conversions Part 1

Format	Color
Hex	CFA57B
RGB	207, 165, 123
RGB Percent	81%, 65%, 48%
CMY	0.1882, 0.3529, 0.5176
CMYK	0.00, 0.20, 0.41, 0.19
HSL	30°, 47%, 65%
HSV	30°, 41%, 81%
XYZ	42.7624, 41.6057, 24.5158
YIQ	172.7700, 38.5140, -4.1580

Conversions

Conversions Part 2

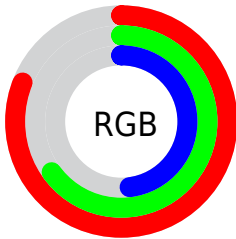
Format	Color
R _Y B	207, 207, 123
Decimal	13608315
CIE Lab	70.60, 9.86, 27.63
CIE LCh	71, 29.341, 70.363
Yxy	41.6057, 0.3927, 0.3821
Android (android.graphics.Color)	4291798395 (0xFFCFA57B)
YUV	172.7700, -24.5366, 30.0197
Hunter-Lab	64.5025, 5.4585, 22.6171

Details

The Decimal color **13608315** is a light color, and the websafe version is hex **CC9966**. A complement of this color would be **8103375**, and the grayscale version is **11382189**.

A 20% lighter version of the original color is **16768176**, and **9924938** is the 20% darker color. If you saturate the color by 10%, you get **13605734**, and if you desaturate by 10%, it is **13610896**.

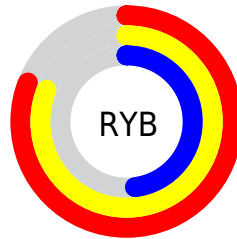
Distribution



Red (81%)

Green (65%)

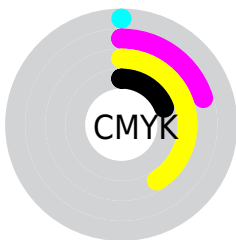
Blue (48%)



Red (81%)

Yellow (81%)

Blue (48%)

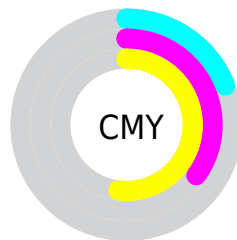


Cyan (0%)

Magenta (20%)

Yellow (41%)

Black (19%)



Cyan (19%)

Magenta (35%)

Yellow (52%)

Brightness & Saturation Gradients

These gradients show how the Decimal color 13608315 changes by changing the brightness by 10 percent. The first figure shows a shift by +10% for each color and the second figure -10%.

Similar to the brightness gradients but the following saturation gradients show a change of the Decimal color 13608315 by changing the saturation by 10% instead.

 13608315

 13608315

16777215

 11766626

 16768176

 9924938

 16775627

 8149298

 16777192

 6439196

 4729605

 3151616

 1507328

 0

 13608315

 13608315

 13605734

 13610896

 13602898

 13613732

 13600317

 13616313

 13597736

 13618894

 13594900

 13621731

 13592576

 13624311

 13626879

 13629695

 13631487

Harmonies

Analogous

The Analogous color harmony consists of three colors that are next to each other on the color wheel.



14654859



13608315



11972216

Triad

The Triadic color harmony groups three colors that are evenly spaced from another and form a triangle on the color wheel.



13608315



6339765



12362709

Complementary

The Complementary color scheme is a pair of colors which are on the opposite of each other on the color wheel.



13608315



8103375

Split Complementary

Split-complementary colors differ from the complementary color scheme. The scheme consists of three colors, the original color and two neighbors of the complement color.



10005729



13608315



5946062

Square

The Square scheme is like the rectangle color scheme, but the four colors are evenly spaced on the color wheel.



13608315



8043162



7517406



14064575

Rectangle

The Rectangle color scheme consists of four colors that form a rectangle on the color wheel.



13608315



10728318



7517406



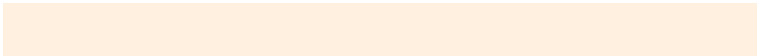
11642587

Sweetspot

The Sweet Spot groups the original color and five complimentary colors.



13608315



16773344



13597605



8419182



0



8421504

Same Dimension

The Same Dimension uses a secret algorithm to generate beautiful new colors.



13608315



16761218



13619067



6906718



11031552



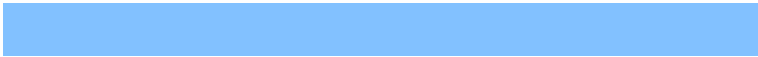
2692096

Inverse Universe

The Inverse Universe completely reimagines the original color for something new.



8103375



8569343



8092623



6185833



21672



5161

Previews

White Background



This preview shows how the Decimal color 13608315 looks on a white background.

Color Contrast Check

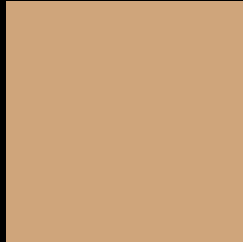
Large Text (above 18pt) WCAG AA × Fail

Any Text WCAG AA × Fail

Large Text (above 18pt) WCAG AAA × Fail

Any Text WCAG AAA × Fail

Black Background



This preview shows how the Decimal color 13608315 looks on a black background.

Color Contrast Check

Large Text (above 18pt) WCAG AA ✓ Pass

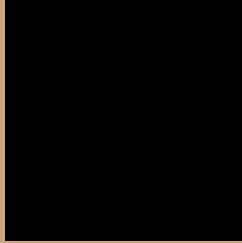
Any Text WCAG AA ✓ Pass

Large Text (above 18pt) WCAG AAA ✓ Pass

Any Text WCAG AAA ✓ Pass

If you want to check with other color combinations, try the [Color Contrast Checker](#).

Decimal 13608315 Background



This preview shows how black text looks on a background with the Decimal color 13608315.




This preview shows how white text looks on a background with the Decimal color 13608315.

Color Blindness Simulation

Color vision deficiency is a very complex topic, and I could not describe the different causes any better than Wikipedia does, so if you want to learn more, you should check out their [article about color blindness](#).

Dichromacy





Tritanopia
13934507

Trichromacy



Original Color
13608315

Protanomaly
12757629

Deuteranomaly
13543035

Tritanomaly
13803930

Monochromacy



Original Color
13608315

Achromatopsia
11382189

Achromatomaly
12167835

CSS Examples

Text

The CSS property to change the color of the text to Decimal 13608315 is called "color". The color property can be set on classes, ids or directly on the HTML element.

This example shows how text in the color #CFA57B looks like.

```
.text, #text, p{  
    color:#CFA57B  
}
```

If you want to add a text shadow in that color use the text-shadow property, you can generate a text shadow directly with our [CSS Text Shadow Generator](#).

Here you see how black text with a 4 pixel #CFA57B colored shadow looks like.

```
.shadow{ text-shadow: 4px 4px 2px #CFA57B
}
```

Border

The CSS property to change the border of an element to Decimal 13608315 is called "border". The border property can be set on classes, ids or directly on the HTML element.

This example shows the color as border, it can be applied via the CSS property "border" or "border-color".

```
.border, #border, table{ border:4px solid
#CFA57B }
```

If only the border color should be changed use the property `border-color`.

```
.border{ border-color:#CFA57B }
```

If you want to add a box shadow in that color use:

Here you see how a box with a 4 pixel #CFA57B colored shadow looks like.

```
.boxshadow{ -moz-box-shadow:4px 4px 4px  
4px #CFA57B; -webkit-box-shadow:4px 4px  
4px 4px #CFA57B; box-shadow:4px 4px 4px  
4px #CFA57B }
```

Background

The CSS property to change the background color of an element to Decimal 13608315 is called "background". The background property can be set on classes, ids or directly on the HTML element.

```
.background, #background, body{  
background:#CFA57B }
```

If only the background color should be changed can be used:

```
.background{ background-color:#CFA57B }
```

This example shows the color as background, it is applied via the CSS property "background".

To optimize and compress your CSS code, you can use our [online CSS compressor and optimizer](#) based on csstidy. If you want to create a linear or radial gradient as background or border, check our [CSS Gradient Generator](#).

Hey! You found this booklet interesting? Support Converting Colors with the new Membership Option!

The pro membership hides all ads, plus gives you double the colors in the color bucket, and more awesome pro features!

[Learn more, Memberships starting at \\$2.50/m!](#)

**Follow me
on Twitter!**

@ConvertingColor