

Converting Colors

Decimal(13608357)

Have a look what the booklet for
Decimal(13608357) contains.

Decimal(13608357)	3
<i>Conversions</i>	4
<i>Details</i>	6
<i>Harmonies</i>	11
<i>Previews</i>	23
<i>Color Blindness Simulation</i>	26
<i>CSS Examples</i>	29

Color

Decimal(13608357)

Conversions

Conversions Part 1

Format	Color
Hex	CFA5A5
RGB	207, 165, 165
RGB Percent	81%, 65%, 65%
CMY	0.1882, 0.3529, 0.3529
CMYK	0.00, 0.20, 0.20, 0.19
HSL	0°, 30%, 73%
HSV	0°, 20%, 81%
XYZ	45.9788, 42.8923, 41.4530
YIQ	177.5580, 25.0320, 8.9040

Conversions

Conversions Part 2

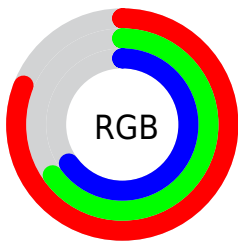
Format	Color
R _Y B	207, 165, 165
Decimal	13608357
CIE Lab	71.48, 15.43, 5.88
CIE LCh	71, 16.508, 20.856
Yxy	42.8923, 0.3528, 0.3291
Android (android.graphics.Color)	4291798437 (0xFFCFA5A5)
YUV	177.5580, -6.1911, 25.8206
Hunter-Lab	65.4922, 10.7046, 8.3172

Details

The Decimal color **13608357** is a light color, and the websafe version is hex **CC9999**. A complement of this color would be **10866639**, and the grayscale version is **11711154**.

A 20% lighter version of the original color is **16768220**, and **9990513** is the 20% darker color. If you saturate the color by 10%, you get **13602960**, and if you desaturate by 10%, it is **13613754**.

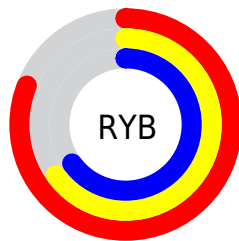
Distribution



Red (81%)

Green (65%)

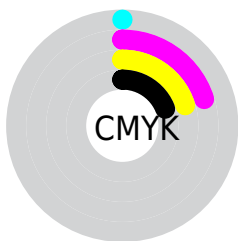
Blue (65%)



Red (81%)

Yellow (65%)

Blue (65%)

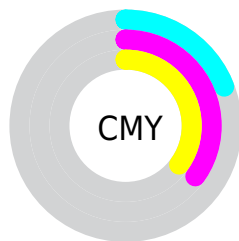


Cyan (0%)

Magenta (20%)

Yellow (20%)

Black (19%)



Cyan (19%)

Magenta (35%)

Yellow (35%)

Brightness & Saturation Gradients

These gradients show how the Decimal color 13608357 changes by changing the brightness by 10 percent. The first figure shows a shift by +10% for each color and the second figure -10%.

Similar to the brightness gradients but the following saturation gradients show a change of the Decimal color 13608357 by changing the saturation by 10% instead.

 13608357

 13608357

16777215

 11766667

 16768220

 9990513

 16775672

 8280153

 6570305

 4925995

 3413271

 2097152

 0

 13608357

 13608357

 13602960

 13613754

 13597820

 13618894

 13592423

 13624291

 13587026

 13629688

 13581886

 13631487

 13576489

 13571092

 13565952

Harmonies

Analogous

The Analogous color harmony consists of three colors that are next to each other on the color wheel.



13346228



13608357



13346968

Triad

The Triadic color harmony groups three colors that are evenly spaced from another and form a triangle on the color wheel.



13608357



10401180



10072780

Complementary

The Complementary color scheme is a pair of colors which are on the opposite of each other on the color wheel.



13608357



10866639

Split Complementary

Split-complementary colors differ from the complementary color scheme. The scheme consists of three colors, the original color and two neighbors of the complement color.



9156294



13608357



9484458

Square

The Square scheme is like the rectangle color scheme, but the four colors are evenly spaced on the color wheel.



13608357



11579795



8960185



11316683

Rectangle

The Rectangle color scheme consists of four colors that form a rectangle on the color wheel.



13608357



12888979



8960185



9679819

Sweetspot

The Sweet Spot groups the original color and five complimentary colors.



13608357



16773360



13608399



8419191



0



8421504

Same Dimension

The Same Dimension uses a secret algorithm to generate beautiful new colors.



13608357



16761538



13613733



6905438



11010048



2686976

Inverse Universe

The Inverse Universe completely reimagines the original color for something new.



10866639



12779519



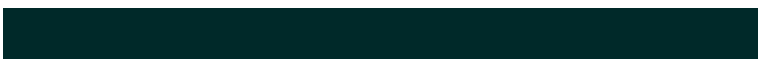
10861263



6187369



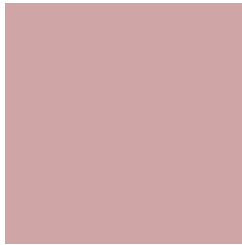
43176



10537

Previews

White Background



This preview shows how the Decimal color 13608357 looks on a white background.

Color Contrast Check

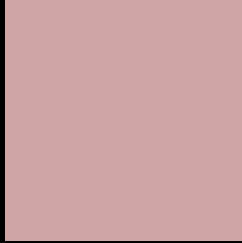
Large Text (above 18pt) WCAG AA × Fail

Any Text WCAG AA × Fail

Large Text (above 18pt) WCAG AAA × Fail

Any Text WCAG AAA × Fail

Black Background



This preview shows how the Decimal color 13608357 looks on a black background.

Color Contrast Check

Large Text (above 18pt) WCAG AA ✓ Pass

Any Text WCAG AA ✓ Pass

Large Text (above 18pt) WCAG AAA ✓ Pass

Any Text WCAG AAA ✓ Pass

If you want to check with other color combinations, try the [Color Contrast Checker](#).

Decimal 13608357 Background



This preview shows how black text looks on a background with the Decimal color 13608357.



This preview shows how white text looks on a background with the Decimal color 13608357.

Color Blindness Simulation

Color vision deficiency is a very complex topic, and I could not describe the different causes any better than Wikipedia does, so if you want to learn more, you should check out their [article about color blindness](#).


Dichromacy



Original Color
13608357

Protanopia
11841450

Deuteranopia
12888484



Tritanopia
13673392

Trichromacy



Original Color
13608357

Protanomaly
12495784

Deuteranomaly
13150372

Tritanomaly
13673644

Monochromacy



Original Color
13608357

Achromatopsia
11711154

Achromatomaly
12430765

CSS Examples

Text

The CSS property to change the color of the text to Decimal 13608357 is called "color". The color property can be set on classes, ids or directly on the HTML element.

This example shows how text in the color #CFA5A5 looks like.

```
.text, #text, p{  
    color:#CFA5A5  
}
```

If you want to add a text shadow in that color use the text-shadow property, you can generate a text shadow directly with our [CSS Text Shadow Generator](#).

Here you see how black text with a 4 pixel #CFA5A5 colored shadow looks like.

```
.shadow{ text-shadow: 4px 4px 2px #CFA5A5
}
```

Border

The CSS property to change the border of an element to Decimal 13608357 is called "border". The border property can be set on classes, ids or directly on the HTML element.

This example shows the color as border, it can be applied via the CSS property "border" or "border-color".

```
.border, #border, table{ border:4px solid
#CFA5A5 }
```

If only the border color should be changed use the property `border-color`.

```
.border{ border-color:#CFA5A5 }
```

If you want to add a box shadow in that color use:

Here you see how a box with a 4 pixel #CFA5A5 colored shadow looks like.

```
.boxshadow{ -moz-box-shadow:4px 4px 4px  
4px #CFA5A5; -webkit-box-shadow:4px 4px  
4px 4px #CFA5A5; box-shadow:4px 4px 4px  
4px #CFA5A5 }
```

Background

The CSS property to change the background color of an element to Decimal 13608357 is called "background". The background property can be set on classes, ids or directly on the HTML element.

```
.background, #background, body{  
background:#CFA5A5 }
```

If only the background color should be changed can be used:

```
.background{ background-color:#CFA5A5 }
```

This example shows the color as background, it is applied via the CSS property "background".

To optimize and compress your CSS code, you can use our [online CSS compressor and optimizer](#) based on csstidy. If you want to create a linear or radial gradient as background or border, check our [CSS Gradient Generator](#).

Hey! You found this booklet interesting? Support Converting Colors with the new Membership Option!

The pro membership hides all ads, plus gives you double the colors in the color bucket, and more awesome pro features!

[Learn more, Memberships starting at \\$2.50/m!](#)

**Follow me
on Twitter!**

@ConvertingColor