

Converting Colors

Decimal(13608609)

Have a look what the booklet for
Decimal(13608609) contains.

Decimal(13608609)	3
<i>Conversions</i>	4
<i>Details</i>	6
<i>Harmonies</i>	11
<i>Previews</i>	23
<i>Color Blindness Simulation</i>	26
<i>CSS Examples</i>	29

Color

Decimal(13608609)

Conversions

Conversions Part 1

Format	Color
Hex	CFA6A1
RGB	207, 166, 161
RGB Percent	81%, 65%, 63%
CMY	0.1882, 0.3490, 0.3686
CMYK	0.00, 0.20, 0.22, 0.19
HSL	7°, 32%, 72%
HSV	7°, 22%, 81%
XYZ	45.8014, 43.1110, 39.6255
YIQ	177.6890, 26.0410, 7.1370

Conversions

Conversions Part 2

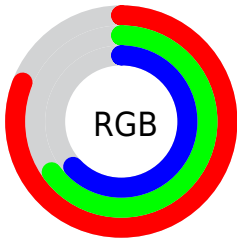
Format	Color
RYB	207, 167, 161
Decimal	13608609
CIELab	71.63, 14.28, 8.30
CIElCh	72, 16.515, 30.151
Yxy	43.1110, 0.3563, 0.3354
Android (android.graphics.Color)	4291798689 (0xFFCFA6A1)
YUV	177.6890, -8.2277, 25.7057
Hunter-Lab	65.6590, 9.6120, 10.1795

Details

The Decimal color **13608609** is a light color, and the websafe version is hex **CC9999**. A complement of this color would be **10603215**, and the grayscale version is **11711154**.

A 20% lighter version of the original color is **16768472**, and **9990766** is the 20% darker color. If you saturate the color by 10%, you get **13603980**, and if you desaturate by 10%, it is **13613238**.

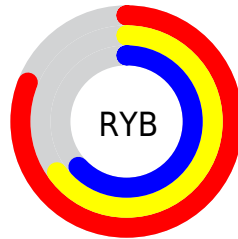
Distribution



Red (81%)

Green (65%)

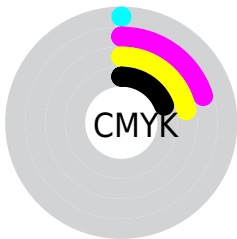
Blue (63%)



Red (81%)

Yellow (65%)

Blue (63%)

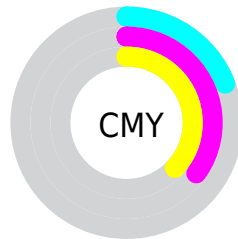


Cyan (0%)

Magenta (20%)

Yellow (22%)

Black (19%)



Cyan (19%)

Magenta (35%)

Yellow (37%)

Brightness & Saturation Gradients

These gradients show how the Decimal color 13608609 changes by changing the brightness by 10 percent. The first figure shows a shift by +10% for each color and the second figure -10%.

Similar to the brightness gradients but the following saturation gradients show a change of the Decimal color 13608609 by changing the saturation by 10% instead.

 13608609

 13608609

16777215

 11766919

 16768472

 9990766

 16775924

 8280405

 6570558

 4926248

 3347988

 2097152

 0

 13608609

 13608609

 13603980

 13613238

 13599096

 13618122

 13594467

 13622751

 13589582

 13627636

 13584953

 13631487

 13580069

 13575440

 13571840

Harmonies

Analogous

The Analogous color harmony consists of three colors that are next to each other on the color wheel.



13477296



13608609



13150870

Triad

The Triadic color harmony groups three colors that are evenly spaced from another and form a triangle on the color wheel.



13608609



10139552



10465741

Complementary

The Complementary color scheme is a pair of colors which are on the opposite of each other on the color wheel.



13608609



10603215

Split Complementary

Split-complementary colors differ from the complementary color scheme. The scheme consists of three colors, the original color and two neighbors of the complement color.



9418185



13608609



9222319

Square

The Square scheme is like the rectangle color scheme, but the four colors are evenly spaced on the color wheel.



13608609



11252629



8960190



11709641

Rectangle

The Rectangle color scheme consists of four colors that form a rectangle on the color wheel.



13608609



12627346



8960190



10072781

Sweetspot

The Sweet Spot groups the original color and five complimentary colors.



13608609



16773101



13607370



8418933



0



8421504

Same Dimension

The Same Dimension uses a secret algorithm to generate beautiful new colors.



13608609



16761530



13614497



6905694



11014656



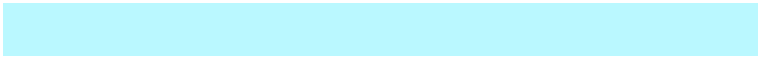
2688000

Inverse Universe

The Inverse Universe completely reimagines the original color for something new.



10603215



12253439



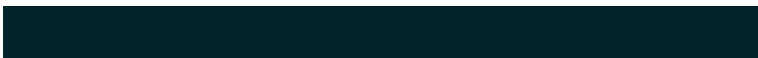
10597327



6186857



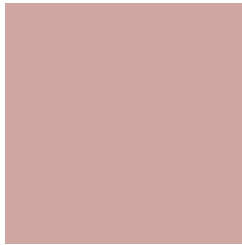
38568



9257

Previews

White Background



This preview shows how the Decimal color 13608609 looks on a white background.

Color Contrast Check

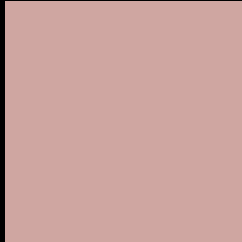
Large Text (above 18pt) WCAG AA × Fail

Any Text WCAG AA × Fail

Large Text (above 18pt) WCAG AAA × Fail

Any Text WCAG AAA × Fail

Black Background



This preview shows how the Decimal color 13608609 looks on a black background.

Color Contrast Check

Large Text (above 18pt) WCAG AA ✓ Pass

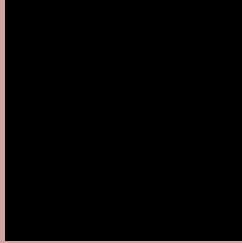
Any Text WCAG AA ✓ Pass

Large Text (above 18pt) WCAG AAA ✓ Pass

Any Text WCAG AAA ✓ Pass

If you want to check with other color combinations, try the [Color Contrast Checker](#).

Decimal 13608609 Background



This preview shows how black text looks on a background with the Decimal color 13608609.



This preview shows how white text looks on a background with the Decimal color 13608609.

Color Blindness Simulation

Color vision deficiency is a very complex topic, and I could not describe the different causes any better than Wikipedia does, so if you want to learn more, you should check out their [article about color blindness](#).

Dichromacy





Tritanopia
13739184

Trichromacy



Original Color
13608609

Protanomaly
12496036

Deuteranomaly
13215904

Tritanomaly
13673899

Monochromacy



Original Color
13608609

Achromatopsia
11711154

Achromatomaly
12431020

CSS Examples

Text

The CSS property to change the color of the text to Decimal 13608609 is called "color". The color property can be set on classes, ids or directly on the HTML element.

This example shows how text in the color #CFA6A1 looks like.

```
.text, #text, p{  
    color:#CFA6A1  
}
```

If you want to add a text shadow in that color use the text-shadow property, you can generate a text shadow directly with our [CSS Text Shadow Generator](#).

Here you see how black text with a 4 pixel #CFA6A1 colored shadow looks like.

```
.shadow{ text-shadow: 4px 4px 2px #CFA6A1
}
```

Border

The CSS property to change the border of an element to Decimal 13608609 is called "border". The border property can be set on classes, ids or directly on the HTML element.

This example shows the color as border, it can be applied via the CSS property "border" or "border-color".

```
.border, #border, table{ border:4px solid
#CFA6A1 }
```

If only the border color should be changed use the property `border-color`.

```
.border{ border-color:#CFA6A1 }
```

If you want to add a box shadow in that color use:

Here you see how a box with a 4 pixel #CFA6A1 colored shadow looks like.

```
.boxshadow{ -moz-box-shadow:4px 4px 4px  
4px #CFA6A1; -webkit-box-shadow:4px 4px  
4px 4px #CFA6A1; box-shadow:4px 4px 4px  
4px #CFA6A1 }
```

Background

The CSS property to change the background color of an element to Decimal 13608609 is called "background". The background property can be set on classes, ids or directly on the HTML element.

```
.background, #background, body{  
background:#CFA6A1 }
```

If only the background color should be changed can be used:

```
.background{ background-color:#CFA6A1 }
```

This example shows the color as background, it is applied via the CSS property "background".

To optimize and compress your CSS code, you can use our [online CSS compressor and optimizer](#) based on csstidy. If you want to create a linear or radial gradient as background or border, check our [CSS Gradient Generator](#).

Hey! You found this booklet interesting? Support Converting Colors with the new Membership Option!

The pro membership hides all ads, plus gives you double the colors in the color bucket, and more awesome pro features!

[Learn more, Memberships starting at \\$2.50/m!](#)

**Follow me
on Twitter!**

@ConvertingColor