

Converting Colors

Decimal(13608617)

Have a look what the booklet for
Decimal(13608617) contains.

| | |
|--|----|
| Decimal(13608617) | 3 |
| <i>Conversions</i> | 4 |
| <i>Details</i> | 6 |
| <i>Harmonies</i> | 11 |
| <i>Previews</i> | 23 |
| <i>Color Blindness Simulation</i> | 26 |
| <i>CSS Examples</i> | 29 |

Color

Decimal(13608617)

Conversions

Conversions Part 1

| Format | Color |
|-------------|---------------------------|
| Hex | CFA6A9 |
| RGB | 207, 166, 169 |
| RGB Percent | 81%, 65%, 66% |
| CMY | 0.1882, 0.3490, 0.3373 |
| CMYK | 0.00, 0.20, 0.18, 0.19 |
| HSL | 356°, 30%, 73% |
| HSV | 356°, 20%, 81% |
| XYZ | 46.5298, 43.4024, 43.4612 |
| YIQ | 178.6010, 23.4730, 9.6250 |

Conversions

Conversions Part 2

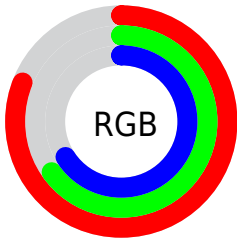
| Format | Color |
|-------------------------------------|-------------------------------|
| R_{YB} | 207, 166, 169 |
| Decimal | 13608617 |
| CIE _{Lab} | 71.83, 15.50, 4.17 |
| CIE _{LCh} | 72, 16.050, 15.055 |
| Yxy | 43.4024, 0.3488, 0.3254 |
| Android (android.graphics.Color) | 4291798697 (0xFFCFA6A9) |
| YUV | 178.6010, -4.7333, 24.9059 |
| Hunter-Lab | 65.8805, 10.7793, 7.0029 |

Details

The Decimal color **13608617** is a light color, and the websafe version is hex **CC9999**. A complement of this color would be **10932172**, and the grayscale version is **11776947**.

A 20% lighter version of the original color is **16768480**, and **9990773** is the 20% darker color. If you saturate the color by 10%, you get **13603222**, and if you desaturate by 10%, it is **13614012**.

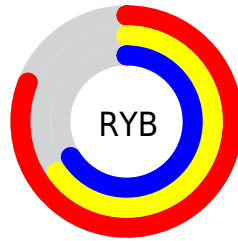
Distribution



Red (81%)

Green (65%)

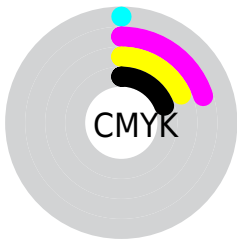
Blue (66%)



Red (81%)

Yellow (65%)

Blue (66%)

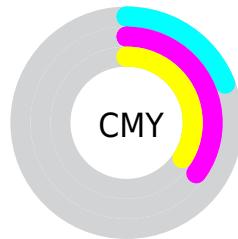


Cyan (0%)

Magenta (20%)

Yellow (18%)

Black (19%)



Cyan (19%)

Magenta (35%)

Yellow (34%)

Brightness & Saturation Gradients


These gradients show how the Decimal color 13608617 changes by changing the brightness by 10 percent. The first figure shows a shift by +10% for each color and the second figure -10%.

Similar to the brightness gradients but the following saturation gradients show a change of the Decimal color 13608617 by changing the saturation by 10% instead.

 13608617

 13608617

16777215

 11766927

 16768480

 9990773


 16775933

 8280412

 6570565

 4991791

 3413530

 2162688

 0

 13608617

 13608617

 13603222

 13614012

 13598083

 13619151

 13592687

 13624547

 13587292

 13629942

 13582153

 13631487

 13576758

 13571363

 13565968

 13565967

Harmonies

Analogous

The Analogous color harmony consists of three colors that are next to each other on the color wheel.



13215672



13608617



13412508

Triad

The Triadic color harmony groups three colors that are evenly spaced from another and form a triangle on the color wheel.



13608617



10728859



9942220

Complementary

The Complementary color scheme is a pair of colors which are on the opposite of each other on the color wheel.



13608617



10932172

Split Complementary

Split-complementary colors differ from the complementary color scheme. The scheme consists of three colors, the original color and two neighbors of the complement color.



9222084



13608617



9746600

Square

The Square scheme is like the rectangle color scheme, but the four colors are evenly spaced on the color wheel.



13608617



11841940



9157047



11120588

Rectangle

The Rectangle color scheme consists of four colors that form a rectangle on the color wheel.



13608617



13085590



9157047



9614794

Sweetspot

The Sweet Spot groups the original color and five complimentary colors.



13608617



16773361



13412047



8419191



0



8421504

Same Dimension

The Same Dimension uses a secret algorithm to generate beautiful new colors.



13608617



16761542



13612966



6905439



11010060



2686979

Inverse Universe

The Inverse Universe completely reimagines the original color for something new.



13608617



16761542



10927823



6905439



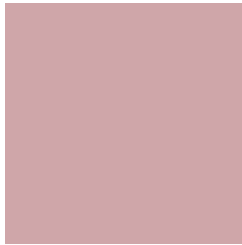
11010060



2686979

Previews

White Background



This preview shows how the Decimal color 13608617 looks on a white background.

Color Contrast Check

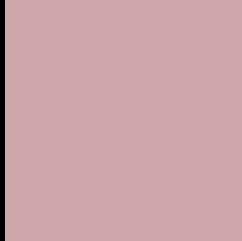
Large Text (above 18pt) WCAG AA × Fail

Any Text WCAG AA × Fail

Large Text (above 18pt) WCAG AAA × Fail

Any Text WCAG AAA × Fail

Black Background



This preview shows how the Decimal color 13608617 looks on a black background.

Color Contrast Check

Large Text (above 18pt) WCAG AA ✓ Pass

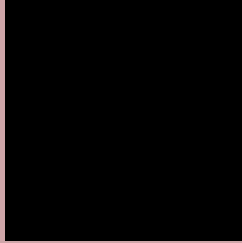
Any Text WCAG AA ✓ Pass

Large Text (above 18pt) WCAG AAA ✓ Pass

Any Text WCAG AAA ✓ Pass

If you want to check with other color combinations, try the [Color Contrast Checker](#).

Decimal 13608617 Background



This preview shows how black text looks on a background with the Decimal color 13608617.



This preview shows how white text looks on a background with the Decimal color 13608617.

Color Blindness Simulation

Color vision deficiency is a very complex topic, and I could not describe the different causes any better than Wikipedia does, so if you want to learn more, you should check out their [article about color blindness](#).

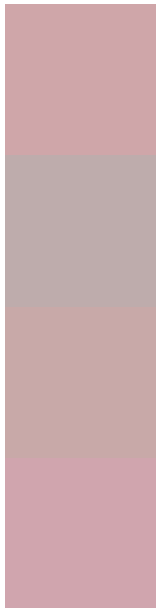
Dichromacy





Tritanopia
13673905

Trichromacy



Original Color
13608617

Protanomaly
12496044

Deuteranomaly
13150632

Tritanomaly
13673902

Monochromacy



Original Color
13608617

Achromatopsia
11776947

Achromatomaly
12431023

CSS Examples

Text

The CSS property to change the color of the text to Decimal 13608617 is called "color". The color property can be set on classes, ids or directly on the HTML element.

This example shows how text in the color #CFA6A9 looks like.

```
.text, #text, p{  
    color:#CFA6A9  
}
```

If you want to add a text shadow in that color use the text-shadow property, you can generate a text shadow directly with our [CSS Text Shadow Generator](#).

Here you see how black text with a 4 pixel #CFA6A9 colored shadow looks like.

```
.shadow{ text-shadow: 4px 4px 2px #CFA6A9
}
```

Border

The CSS property to change the border of an element to Decimal 13608617 is called "border". The border property can be set on classes, ids or directly on the HTML element.

This example shows the color as border, it can be applied via the CSS property "border" or "border-color".

```
.border, #border, table{ border:4px solid
#CFA6A9 }
```

If only the border color should be changed use the property `border-color`.

```
.border{ border-color:#CFA6A9 }
```

If you want to add a box shadow in that color use:

Here you see how a box with a 4 pixel #CFA6A9 colored shadow looks like.

```
.boxshadow{ -moz-box-shadow:4px 4px 4px  
4px #CFA6A9; -webkit-box-shadow:4px 4px  
4px 4px #CFA6A9; box-shadow:4px 4px 4px  
4px #CFA6A9 }
```

Background

The CSS property to change the background color of an element to Decimal 13608617 is called "background". The background property can be set on classes, ids or directly on the HTML element.

```
.background, #background, body{  
background:#CFA6A9 }
```

If only the background color should be changed can be used:

```
.background{ background-color:#CFA6A9 }
```

This example shows the color as background, it is applied via the CSS property "background".

To optimize and compress your CSS code, you can use our [online CSS compressor and optimizer](#) based on csstidy. If you want to create a linear or radial gradient as background or border, check our [CSS Gradient Generator](#).

Hey! You found this booklet interesting? Support Converting Colors with the new Membership Option!

The pro membership hides all ads, plus gives you double the colors in the color bucket, and more awesome pro features!

[Learn more, Memberships starting at \\$2.50/m!](#)

**Follow me
on Twitter!**

@ConvertingColor