

Converting Colors

Decimal(13609349)

Have a look what the booklet for
Decimal(13609349) contains.

| | |
|--|----|
| Decimal(13609349) | 3 |
| <i>Conversions</i> | 4 |
| <i>Details</i> | 6 |
| <i>Harmonies</i> | 11 |
| <i>Previews</i> | 23 |
| <i>Color Blindness Simulation</i> | 26 |
| <i>CSS Examples</i> | 29 |

Color

Decimal(13609349)

Conversions

Conversions Part 1

| Format | Color |
|---------------|----------------------------|
| Hex | CFA985 |
| RGB | 207, 169, 133 |
| RGB Percent | 81%, 66%, 52% |
| CMY | 0.1882, 0.3373, 0.4784 |
| CMYK | 0.00, 0.18, 0.36, 0.19 |
| HSL | 29°, 44%, 67% |
| HSV | 29°, 36%, 81% |
| XYZ | 44.1537, 43.3348, 28.2276 |
| YIQ | 176.2580, 34.2040, -3.1400 |

Conversions

Conversions Part 2

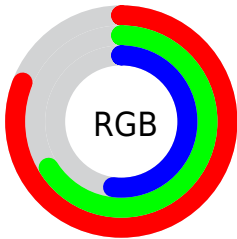
| Format | Color |
|-------------------------------------|---|
| RYB | 207, 203, 133 |
| Decimal | 13609349 |
| CIELab | 71.78, 8.87, 23.82 |
| CIElCh | 72, 25.419, 69.575 |
| Yxy | 43.3348, 0.3816, 0.3745 |
| Android (android.graphics.Color) | 4291799429 (0xFFCFA985) |
| YUV | 176.2580, -21.3262, 26.9607 |
| Hunter-Lab | 65.8292, 4.5246, 20.6568 |

Details

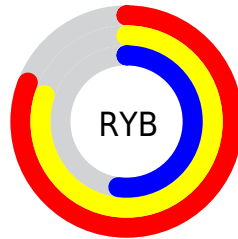
The Decimal color **13609349** is a light color, and the websafe version is hex **CC9966**. A complement of this color would be **8760271**, and the grayscale version is **11579568**.

A 20% lighter version of the original color is **16769210**, and **9925971** is the 20% darker color. If you saturate the color by 10%, you get **13606512**, and if you desaturate by 10%, it is **13612186**.

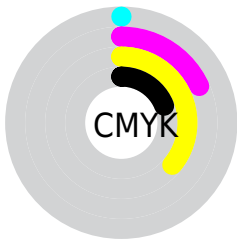
Distribution



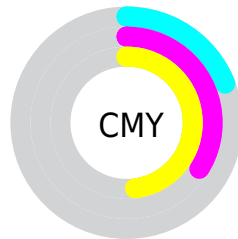
- Red (81%)
- Green (66%)
- Blue (52%)



- Red (81%)
- Yellow (80%)
- Blue (52%)



- Cyan (0%)
- Magenta (18%)
- Yellow (36%)
- Black (19%)



- Cyan (19%)
- Magenta (34%)
- Yellow (48%)

Brightness & Saturation Gradients

These gradients show how the Decimal color 13609349 changes by changing the brightness by 10 percent. The first figure shows a shift by +10% for each color and the second figure -10%.

Similar to the brightness gradients but the following saturation gradients show a change of the Decimal color 13609349 by changing the saturation by 10% instead.

 13609349

 13609349

16777215

 11767660

 16769210

 9925971

 16776662

 8150076

 16777203

 6440229

 4796176

 3283456

 1703936

 0

 13609349

 13609349

 13606512

 13612186

 13603932

 13614766

 13601095

 13617603

 13598258

 13620440

 13595678

 13623020

 13592841

 13625855

 13591808

 13628415

 13631231

 13631487

Harmonies

Analogous

The Analogous color harmony consists of three colors that are next to each other on the color wheel.



14459539



13609349



12169602

Triad

The Triadic color harmony groups three colors that are evenly spaced from another and form a triangle on the color wheel.



13609349



7454135



12429268

Complementary

The Complementary color scheme is a pair of colors which are on the opposite of each other on the color wheel.



13609349



8760271

Split Complementary

Split-complementary colors differ from the complementary color scheme. The scheme consists of three colors, the original color and two neighbors of the complement color.



10399709



13609349



7191501

Square

The Square scheme is like the rectangle color scheme, but the four colors are evenly spaced on the color wheel.



13609349



8764575



8370139



13935041

Rectangle

The Rectangle color scheme consists of four colors that form a rectangle on the color wheel.



13609349



11056519



8370139



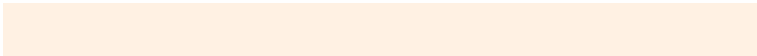
11774680

Sweetspot

The Sweet Spot groups the original color and five complimentary colors.



13609349



16773603



13600171



8419183



0



8421504

Same Dimension

The Same Dimension uses a secret algorithm to generate beautiful new colors.



13609349



16762769



13618821



6906718



11031040



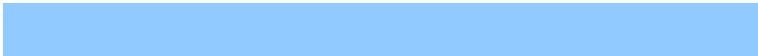
2692096

Inverse Universe

The Inverse Universe completely reimagines the original color for something new.



8760271



9554687



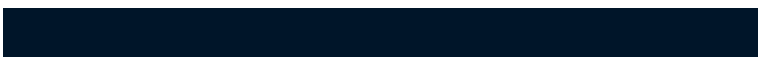
8750799



6185833



22184



5417

Previews

White Background



This preview shows how the Decimal color 13609349 looks on a white background.

Color Contrast Check

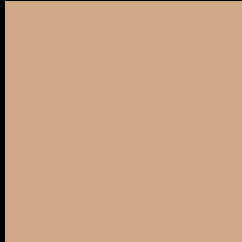
Large Text (above 18pt) WCAG AA × Fail

Any Text WCAG AA × Fail

Large Text (above 18pt) WCAG AAA × Fail

Any Text WCAG AAA × Fail

Black Background



This preview shows how the Decimal color 13609349 looks on a black background.

Color Contrast Check

Large Text (above 18pt) WCAG AA ✓ Pass

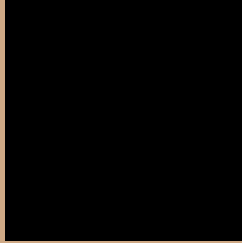
Any Text WCAG AA ✓ Pass

Large Text (above 18pt) WCAG AAA ✓ Pass

Any Text WCAG AAA ✓ Pass

If you want to check with other color combinations, try the [Color Contrast Checker](#).

Decimal 13609349 Background



This preview shows how black text looks on a background with the Decimal color 13609349.



This preview shows how white text looks on a background with the Decimal color 13609349.

Color Blindness Simulation

Color vision deficiency is a very complex topic, and I could not describe the different causes any better than Wikipedia does, so if you want to learn more, you should check out their [article about color blindness](#).

Dichromacy



Original Color
13609349

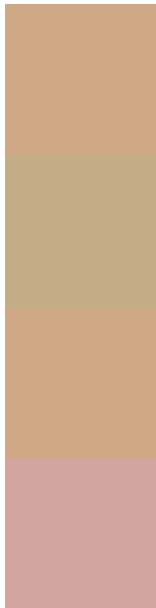
Protanopia
12365960

Deuteranopia
13609349



Tritanopia
13870000

Trichromacy



Original Color
13609349

Protanomaly
12823943

Deuteranomaly
13609349

Tritanomaly
13804960

Monochromacy



Original Color
13609349

Achromatopsia
11579568

Achromatomaly
12299680

CSS Examples

Text

The CSS property to change the color of the text to Decimal 13609349 is called "color". The color property can be set on classes, ids or directly on the HTML element.

This example shows how text in the color #CFA985 looks like.

```
.text, #text, p{  
    color:#CFA985  
}
```

If you want to add a text shadow in that color use the text-shadow property, you can generate a text shadow directly with our [CSS Text Shadow Generator](#).

Here you see how black text with a 4 pixel #CFA985 colored shadow looks like.

```
.shadow{ text-shadow: 4px 4px 2px #CFA985
}
```

Border

The CSS property to change the border of an element to Decimal 13609349 is called "border". The border property can be set on classes, ids or directly on the HTML element.

This example shows the color as border, it can be applied via the CSS property "border" or "border-color".

```
.border, #border, table{ border:4px solid
#CFA985 }
```

If only the border color should be changed use the property `border-color`.

```
.border{ border-color:#CFA985 }
```

If you want to add a box shadow in that color use:

Here you see how a box with a 4 pixel #CFA985 colored shadow looks like.

```
.boxshadow{ -moz-box-shadow:4px 4px 4px  
4px #CFA985; -webkit-box-shadow:4px 4px  
4px 4px #CFA985; box-shadow:4px 4px 4px  
4px #CFA985 }
```

Background

The CSS property to change the background color of an element to Decimal 13609349 is called "background". The background property can be set on classes, ids or directly on the HTML element.

```
.background, #background, body{  
background:#CFA985 }
```

If only the background color should be changed can be used:

```
.background{ background-color:#CFA985 }
```

This example shows the color as background, it is applied via the CSS property "background".

To optimize and compress your CSS code, you can use our [online CSS compressor and optimizer](#) based on csstidy. If you want to create a linear or radial gradient as background or border, check our [CSS Gradient Generator](#).

Hey! You found this booklet interesting? Support Converting Colors with the new Membership Option!

The pro membership hides all ads, plus gives you double the colors in the color bucket, and more awesome pro features!

[Learn more, Memberships starting at \\$2.50/m!](#)

**Follow me
on Twitter!**

@ConvertingColor