

Converting Colors

Decimal(13610415)

Have a look what the booklet for
Decimal(13610415) contains.

Decimal(13610415)	3
<i>Conversions</i>	4
<i>Details</i>	6
<i>Harmonies</i>	11
<i>Previews</i>	23
<i>Color Blindness Simulation</i>	26
<i>CSS Examples</i>	29

Color

Decimal(13610415)

Conversions

Conversions Part 1

Format	Color
Hex	CFADAF
RGB	207, 173, 175
RGB Percent	81%, 68%, 69%
CMY	0.1882, 0.3216, 0.3137
CMYK	0.00, 0.16, 0.15, 0.19
HSL	356°, 26%, 75%
HSV	356°, 16%, 81%
XYZ	48.4136, 46.2477, 46.9325
YIQ	183.3940, 19.6220, 7.8300

Conversions

Conversions Part 2

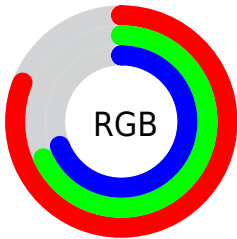
Format	Color
R _Y B	207, 173, 175
Decimal	13610415
CIE Lab	73.71, 12.65, 3.59
CIE LCh	74, 13.148, 15.835
Yxy	46.2477, 0.3419, 0.3266
Android (android.graphics.Color)	4291800495 (0xFFCFADAF)
YUV	183.3940, -4.1382, 20.7025
Hunter-Lab	68.0056, 8.0652, 6.6864

Details

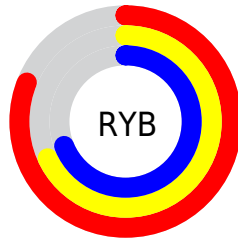
The Decimal color **13610415** is a light color, and the websafe version is hex **CC9999**. A complement of this color would be **11390925**, and the grayscale version is **12040119**.

A 20% lighter version of the original color is **16770278**, and **9992571** is the 20% darker color. If you saturate the color by 10%, you get **13605020**, and if you desaturate by 10%, it is **13615810**.

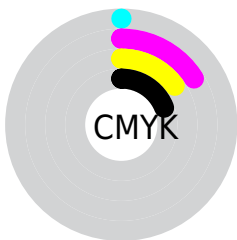
Distribution



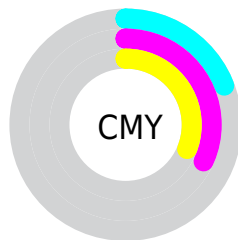
- Red (81%)
- Green (68%)
- Blue (69%)



- Red (81%)
- Yellow (68%)
- Blue (69%)



- Cyan (0%)
- Magenta (16%)
- Yellow (15%)
- Black (19%)



- Cyan (19%)
- Magenta (32%)
- Yellow (31%)

Brightness & Saturation Gradients

These gradients show how the Decimal color 13610415 changes by changing the brightness by 10 percent. The first figure shows a shift by +10% for each color and the second figure -10%.

Similar to the brightness gradients but the following saturation gradients show a change of the Decimal color 13610415 by changing the saturation by 10% instead.

■ 13610415

■ 13610415

16777215

■ 11768468

■ 16770278

■ 9992571

■ 8282210

■ 6637642

■ 4993332

■ 3480606

■ 2163461

■ 0

■ 13610415

■ 13610415

 13605020

 13615810

 13599880

 13620950

 13594485

 13626345

 13589089

 13631485

 13583950

 13631487

 13578554

 13573159

 13567763

 13565964

Harmonies

Analogous

The Analogous color harmony consists of three colors that are next to each other on the color wheel.



13282747



13610415



13479844

Triad

The Triadic color harmony groups three colors that are evenly spaced from another and form a triangle on the color wheel.



13610415



11188900



10664140

Complementary

The Complementary color scheme is a pair of colors which are on the opposite of each other on the color wheel.



13610415



11390925

Split Complementary

Split-complementary colors differ from the complementary color scheme. The scheme consists of three colors, the original color and two neighbors of the complement color.



10009542



13610415



10402991

Square

The Square scheme is like the rectangle color scheme, but the four colors are evenly spaced on the color wheel.



13610415



12105374



9944251



11580620

Rectangle

The Rectangle color scheme consists of four colors that form a rectangle on the color wheel.



13610415



13152671



9944251



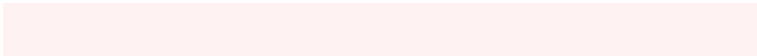
10402251

Sweetspot

The Sweet Spot groups the original color and five complimentary colors.



13610415



16773875



13479375



8419448



0



8421504

Same Dimension

The Same Dimension uses a secret algorithm to generate beautiful new colors.



13610415



16764111



13614253



6905439



11010058



2686978

Inverse Universe

The Inverse Universe completely reimagines the original color for something new.



13610415



16764111



11387087



6905439



11010058



2686978

Previews

White Background



This preview shows how the Decimal color 13610415 looks on a white background.

Color Contrast Check

Large Text (above 18pt) WCAG AA × Fail

Any Text WCAG AA × Fail

Large Text (above 18pt) WCAG AAA × Fail

Any Text WCAG AAA × Fail

Black Background



This preview shows how the Decimal color 13610415 looks on a black background.

Color Contrast Check

Large Text (above 18pt) WCAG AA ✓ Pass

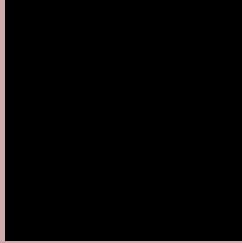
Any Text WCAG AA ✓ Pass

Large Text (above 18pt) WCAG AAA ✓ Pass

Any Text WCAG AAA ✓ Pass

If you want to check with other color combinations, try the [Color Contrast Checker](#).

Decimal 13610415 Background



This preview shows how black text looks on a background with the Decimal color 13610415.



This preview shows how white text looks on a background with the Decimal color 13610415.

Color Blindness Simulation

Color vision deficiency is a very complex topic, and I could not describe the different causes any better than Wikipedia does, so if you want to learn more, you should check out their [article about color blindness](#).

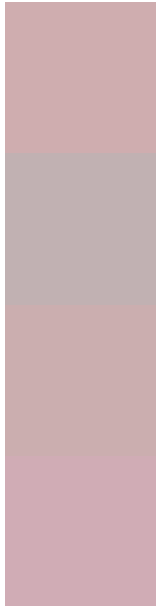
Dichromacy





Tritanopia
13675449

Trichromacy



Original Color
13610415

Protanomaly
12693938

Deuteranomaly
13348527

Tritanomaly
13675701

Monochromacy



Original Color
13610415

Achromatopsia
12040119

Achromatomaly
12628916

CSS Examples

Text

The CSS property to change the color of the text to Decimal 13610415 is called "color". The color property can be set on classes, ids or directly on the HTML element.

This example shows how text in the color #CFADAF looks like.

```
.text, #text, p{  
  color:#CFADAF  
}
```

If you want to add a text shadow in that color use the text-shadow property, you can generate a text shadow directly with our [CSS Text Shadow Generator](#).

Here you see how black text with a 4 pixel #CFADAF colored shadow looks like.

```
.shadow{ text-shadow: 4px 4px 2px #CFADAF
}
```

Border

The CSS property to change the border of an element to Decimal 13610415 is called "border". The border property can be set on classes, ids or directly on the HTML element.

This example shows the color as border, it can be applied via the CSS property "border" or "border-color".

```
.border, #border, table{ border:4px solid
#CFADAF }
```

If only the border color should be changed use the property `border-color`.

```
.border{ border-color:#CFADAF }
```

If you want to add a box shadow in that color use:

Here you see how a box with a 4 pixel #CFADAF colored shadow looks like.

```
.boxshadow{ -moz-box-shadow:4px 4px 4px  
4px #CFADAF; -webkit-box-shadow:4px 4px  
4px 4px #CFADAF; box-shadow:4px 4px 4px  
4px #CFADAF }
```

Background

The CSS property to change the background color of an element to Decimal 13610415 is called "background". The background property can be set on classes, ids or directly on the HTML element.

```
.background, #background, body{  
background:#CFADAF }
```

If only the background color should be changed can be used:

```
.background{ background-color:#CFADAF }
```

This example shows the color as background, it is applied via the CSS property "background".

To optimize and compress your CSS code, you can use our [online CSS compressor and optimizer](#) based on csstidy. If you want to create a linear or radial gradient as background or border, check our [CSS Gradient Generator](#).

Hey! You found this booklet interesting? Support Converting Colors with the new Membership Option!

The pro membership hides all ads, plus gives you double the colors in the color bucket, and more awesome pro features!

[Learn more, Memberships starting at \\$2.50/m!](#)

**Follow me
on Twitter!**

@ConvertingColor