

# Converting Colors

Decimal(13610936)

Have a look what the booklet for  
Decimal(13610936) contains.

<b>Decimal(13610936)</b> .....	3
<i><b>Conversions</b></i> .....	4
<i><b>Details</b></i> .....	6
<i><b>Harmonies</b></i> .....	11
<i><b>Previews</b></i> .....	23
<i><b>Color Blindness Simulation</b></i> .....	26
<i><b>CSS Examples</b></i> .....	29

# **Color**

**Decimal(13610936)**

# Conversions

## Conversions Part 1

<b>Format</b>	<b>Color</b>
Hex	CFAFB8
RGB	207, 175, 184
RGB Percent	81%, 69%, 72%
CMY	0.1882, 0.3137, 0.2784
CMYK	0.00, 0.15, 0.11, 0.19
HSL	343°, 25%, 75%
HSV	343°, 15%, 81%
XYZ	49.7138, 47.3860, 51.8736
YIQ	185.5940, 16.1830, 9.5830

# Conversions

## Conversions Part 2

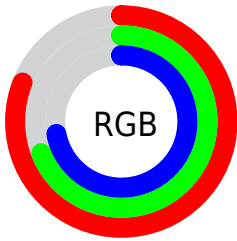
<b>Format</b>	<b>Color</b>
<b>R<sub>YB</sub></b>	207, 175, 184
Decimal	13610936
CIE <sub>Lab</sub>	74.44, 13.05, -0.28
CIE <sub>LCh</sub>	74, 13.048, 358.771
Yxy	47.3860, 0.3337, 0.3181
Android (android.graphics.Color)	4291801016 (0xFFCFAFB8)
YUV	185.5940, -0.7858, 18.7731
Hunter-Lab	68.8375, 8.4454, 3.5073

# Details

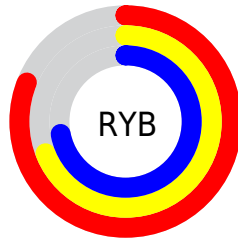
The Decimal color **13610936** is a light color, and the websafe version is hex **CC9999**. A complement of this color would be **11521990**, and the grayscale version is **12237498**.

A 20% lighter version of the original color is **16771056**, and **9992835** is the 20% darker color. If you saturate the color by 10%, you get **13605545**, and if you desaturate by 10%, it is **13616327**.

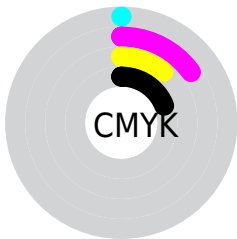
# Distribution



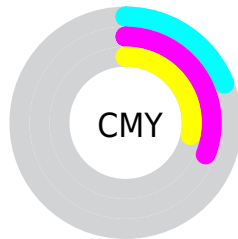
- Red (81%)
- Green (69%)
- Blue (72%)



- Red (81%)
- Yellow (69%)
- Blue (72%)



- Cyan (0%)
- Magenta (15%)
- Yellow (11%)
- Black (19%)



- Cyan (19%)
- Magenta (31%)
- Yellow (28%)

# Brightness & Saturation Gradients

These gradients show how the Decimal color 13610936 changes by changing the brightness by 10 percent. The first figure shows a shift by +10% for each color and the second figure -10%.

Similar to the brightness gradients but the following saturation gradients show a change of the Decimal color 13610936 by changing the saturation by 10% instead.



 13610936

 13610936

16777215

 11768989

 16771056

 9992835

 8282730

 6638162

 5059387

 3480869

 2164240

 0

 13610936

 13610936

 13605545

 13616327

 13600410

 13621462

 13595019

 13626853

 13589628

 13631476

 13584494

 13631487

 13579103

 13573712

 13568321

 13566010

# Harmonies

## Analogous

The Analogous color harmony consists of three colors that are next to each other on the color wheel.



13021636



13610936



13742252

# Triad

The Triadic color harmony groups three colors that are evenly spaced from another and form a triangle on the color wheel.



13610936



11844258



10403019

# Complementary

The Complementary color scheme is a pair of colors which are on the opposite of each other on the color wheel.



13610936



11521990

# Split Complementary

Split-complementary colors differ from the complementary color scheme. The scheme consists of three colors, the original color and two neighbors of the complement color.



10075842



13610936



10993066

# Square

The Square scheme is like the rectangle color scheme, but the four colors are evenly spaced on the color wheel.



13610936



12695199



10272438



11188431

# Rectangle

The Rectangle color scheme consists of four colors that form a rectangle on the color wheel.



13610936



13545894



10272438



10206665



# Sweetspot

The Sweet Spot groups the original color and five complimentary colors.



13610936



16773878



13021135



8419450



0



8421504



# Same Dimension

The Same Dimension uses a secret algorithm to generate beautiful new colors.



13610936



16764892



13612719



6905441



11010095



2686987



# Inverse Universe

The Inverse Universe completely reimagines the original color for something new.



13610936



16764892



11520207



6905441



11010095



2686987



# Previews

## White Background



This preview shows how the Decimal color 13610936 looks on a white background.

## Color Contrast Check

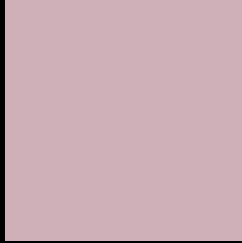
Large Text (above 18pt) WCAG AA × Fail

Any Text WCAG AA × Fail

Large Text (above 18pt) WCAG AAA × Fail

Any Text WCAG AAA × Fail

# Black Background



This preview shows how the Decimal color 13610936 looks on a black background.

## Color Contrast Check

Large Text (above 18pt) WCAG AA ✓ Pass

Any Text WCAG AA ✓ Pass

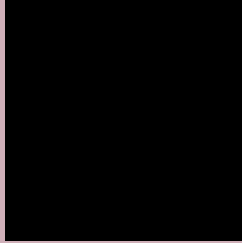
Large Text (above 18pt) WCAG AAA ✓ Pass

Any Text WCAG AAA ✓ Pass

If you want to check with other color combinations, try the [Color Contrast Checker](#).



## Decimal 13610936 Background



This preview shows how black text looks on a background with the Decimal color 13610936.



This preview shows how white text looks on a background with the Decimal color 13610936.

# Color Blindness Simulation

Color vision deficiency is a very complex topic, and I could not describe the different causes any better than Wikipedia does, so if you want to learn more, you should check out their [article about color blindness](#).


## Dichromacy



**Original Color**  
13610936

**Protanopia**  
12170940

**Deuteranopia**  
13218232



**Tritanopia**  
13676220

# Trichromacy



**Original Color**  
13610936

**Protanomaly**  
12694459

**Deuteranomaly**  
13349048

**Tritanomaly**  
13676219

# Monochromacy



**Original Color**  
13610936

**Achromatopsia**  
12237498

**Achromatomaly**  
12760761

# CSS Examples

## Text

The CSS property to change the color of the text to Decimal 13610936 is called "color". The color property can be set on classes, ids or directly on the HTML element.

This example shows how text in the color #CFAFB8 looks like.

```
.text, #text, p{  
  color:#CFAFB8  
}
```

If you want to add a text shadow in that color use the text-shadow property, you can generate a text shadow directly with our [CSS Text Shadow Generator](#).

Here you see how black text with a 4 pixel #CFAFB8 colored shadow looks like.

```
.shadow{ text-shadow: 4px 4px 2px #CFAFB8  
}
```

## Border

The CSS property to change the border of an element to Decimal 13610936 is called "border". The border property can be set on classes, ids or directly on the HTML element.

This example shows the color as border, it can be applied via the CSS property "border" or "border-color".

```
.border, #border, table{ border:4px solid  
#CFAFB8 }
```

If only the border color should be changed use the property `border-color`.

```
.border{ border-color:#CFAFB8 }
```

If you want to add a box shadow in that color use:

Here you see how a box with a 4 pixel #CFAFB8 colored shadow looks like.

```
.boxshadow{ -moz-box-shadow:4px 4px 4px  
4px #CFAFB8; -webkit-box-shadow:4px 4px  
4px 4px #CFAFB8; box-shadow:4px 4px 4px  
4px #CFAFB8 }
```

# Background

The CSS property to change the background color of an element to Decimal 13610936 is called "background". The background property can be set on classes, ids or directly on the HTML element.

```
.background, #background, body{  
background:#CFAFB8 }
```

If only the background color should be changed can be used:

```
.background{ background-color:#CFAFB8 }
```

This example shows the color as background, it is applied via the CSS property "background".

To optimize and compress your CSS code, you can use our [online CSS compressor and optimizer](#) based on csstidy. If you want to create a linear or radial gradient as background or border, check our [CSS Gradient Generator](#).



Hey! You found this booklet interesting? Support Converting Colors with the new Membership Option!

The pro membership hides all ads, plus gives you double the colors in the color bucket, and more awesome pro features!

**[Learn more, Memberships starting at \\$2.50/m!](#)**

**Follow me  
on Twitter!**

@ConvertingColor