

Converting Colors

Decimal(13611159)

Have a look what the booklet for
Decimal(13611159) contains.

Decimal(13611159)	3
<i>Conversions</i>	4
<i>Details</i>	6
<i>Harmonies</i>	11
<i>Previews</i>	23
<i>Color Blindness Simulation</i>	26
<i>CSS Examples</i>	29

Color

Decimal(13611159)

Conversions

Conversions Part 1

Format	Color
Hex	CFB097
RGB	207, 176, 151
RGB Percent	81%, 69%, 59%
CMY	0.1882, 0.3098, 0.4078
CMYK	0.00, 0.15, 0.27, 0.19
HSL	27°, 37%, 70%
HSV	27°, 27%, 81%
XYZ	46.8434, 46.5504, 35.7944
YIQ	182.4190, 26.5010, -1.2030

Conversions

Conversions Part 2

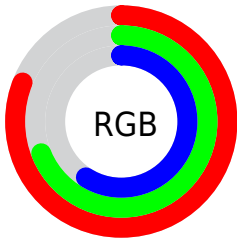
Format	Color
R_{YB}	207, 196, 151
Decimal	13611159
CIE _{Lab}	73.90, 7.44, 16.97
CIE _{LCh}	74, 18.530, 66.319
Yxy	46.5504, 0.3626, 0.3603
Android (android.graphics.Color)	4291801239 (0xFFCFB097)
YUV	182.4190, -15.4896, 21.5575
Hunter-Lab	68.2279, 3.1544, 16.6542

Details

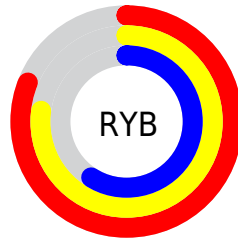
The Decimal color **13611159** is a light color, and the websafe version is hex **CC9999**. A complement of this color would be **9942735**, and the grayscale version is **12040119**.

A 20% lighter version of the original color is **16771277**, and **9993316** is the 20% darker color. If you saturate the color by 10%, you get **13608322**, and if you desaturate by 10%, it is **13613996**.

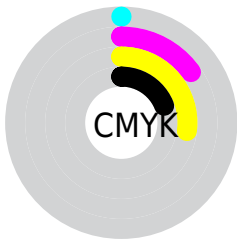
Distribution



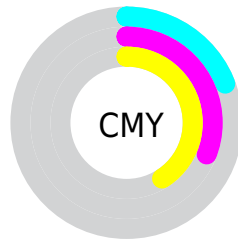
- Red (81%)
- Green (69%)
- Blue (59%)



- Red (81%)
- Yellow (77%)
- Blue (59%)



- Cyan (0%)
- Magenta (15%)
- Yellow (27%)
- Black (19%)



- Cyan (19%)
- Magenta (31%)
- Yellow (41%)

Brightness & Saturation Gradients

These gradients show how the Decimal color 13611159 changes by changing the brightness by 10 percent. The first figure shows a shift by +10% for each color and the second figure -10%.

Similar to the brightness gradients but the following saturation gradients show a change of the Decimal color 13611159 by changing the saturation by 10% instead.

 13611159

 13611159

16777215

 11769213

 16771277

 9993316

 16777193

 8217420

 6572853

 4928544

 3350281

 1902592

 0

 13611159

 13611159

 13608322

 13613996

 13605230

 13617088

 13602393

 13619925

 13599300

 13623018

 13596463

 13625855

 13593371

 13628927

 13590534

 13631487

 13589504

Harmonies

Analogous

The Analogous color harmony consists of three colors that are next to each other on the color wheel.



14199970



13611159



12564116

Triad

The Triadic color harmony groups three colors that are evenly spaced from another and form a triangle on the color wheel.



13611159



9224377



12431569

Complementary

The Complementary color scheme is a pair of colors which are on the opposite of each other on the color wheel.



13611159



9942735

Split Complementary

Split-complementary colors differ from the complementary color scheme. The scheme consists of three colors, the original color and two neighbors of the complement color.



10991319



13611159



9027529

Square

The Square scheme is like the rectangle color scheme, but the four colors are evenly spaced on the color wheel.



13611159



10075815



9681876



13610180

Rectangle

The Rectangle color scheme consists of four colors that form a rectangle on the color wheel.



13611159



11778455



9681876



11973332

Sweetspot

The Sweet Spot groups the original color and five complimentary colors.



13611159



16774379



13604791



8419443



0



8421504

Same Dimension

The Same Dimension uses a secret algorithm to generate beautiful new colors.



13611159



16765613



13618071



6906718



11029248



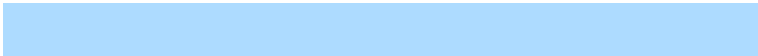
2691584

Inverse Universe

The Inverse Universe completely reimagines the original color for something new.



9942735



11394047



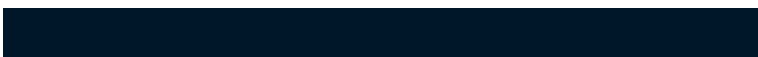
9935823



6186089



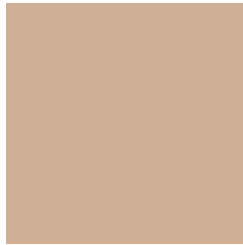
23976



5929

Previews

White Background



This preview shows how the Decimal color 13611159 looks on a white background.

Color Contrast Check

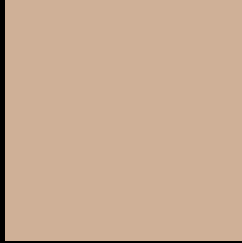
Large Text (above 18pt) WCAG AA × Fail

Any Text WCAG AA × Fail

Large Text (above 18pt) WCAG AAA × Fail

Any Text WCAG AAA × Fail

Black Background



This preview shows how the Decimal color 13611159 looks on a black background.

Color Contrast Check

Large Text (above 18pt) WCAG AA ✓ Pass

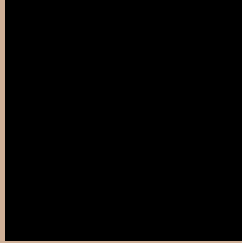
Any Text WCAG AA ✓ Pass

Large Text (above 18pt) WCAG AAA ✓ Pass

Any Text WCAG AAA ✓ Pass

If you want to check with other color combinations, try the [Color Contrast Checker](#).

Decimal 13611159 Background



This preview shows how black text looks on a background with the Decimal color 13611159.



This preview shows how white text looks on a background with the Decimal color 13611159.

Color Blindness Simulation

Color vision deficiency is a very complex topic, and I could not describe the different causes any better than Wikipedia does, so if you want to learn more, you should check out their [article about color blindness](#).

Dichromacy



Original Color
13611159

Protanopia
12563866

Deuteranopia
13807511



Tritanopia
13872057

Trichromacy



Original Color
13611159

Protanomaly
12956569

Deuteranomaly
13741975

Tritanomaly
13807021

Monochromacy



Original Color
13611159

Achromatopsia
11974326

Achromatomaly
12563627

CSS Examples

Text

The CSS property to change the color of the text to Decimal 13611159 is called "color". The color property can be set on classes, ids or directly on the HTML element.

This example shows how text in the color #CFB097 looks like.

```
.text, #text, p{  
  color:#CFB097  
}
```

If you want to add a text shadow in that color use the text-shadow property, you can generate a text shadow directly with our [CSS Text Shadow Generator](#).

Here you see how black text with a 4 pixel #CFB097 colored shadow looks like.

```
.shadow{ text-shadow: 4px 4px 2px #CFB097
}
```

Border

The CSS property to change the border of an element to Decimal 13611159 is called "border". The border property can be set on classes, ids or directly on the HTML element.

This example shows the color as border, it can be applied via the CSS property "border" or "border-color".

```
.border, #border, table{ border:4px solid
#CFB097 }
```

If only the border color should be changed use the property `border-color`.

```
.border{ border-color:#CFB097 }
```

If you want to add a box shadow in that color use:

Here you see how a box with a 4 pixel #CFB097 colored shadow looks like.

```
.boxshadow{ -moz-box-shadow:4px 4px 4px  
4px #CFB097; -webkit-box-shadow:4px 4px  
4px 4px #CFB097; box-shadow:4px 4px 4px  
4px #CFB097 }
```

Background

The CSS property to change the background color of an element to Decimal 13611159 is called "background". The background property can be set on classes, ids or directly on the HTML element.

```
.background, #background, body{  
background:#CFB097 }
```

If only the background color should be changed can be used:

```
.background{ background-color:#CFB097 }
```

This example shows the color as background, it is applied via the CSS property "background".

To optimize and compress your CSS code, you can use our [online CSS compressor and optimizer](#) based on csstidy. If you want to create a linear or radial gradient as background or border, check our [CSS Gradient Generator](#).

Hey! You found this booklet interesting? Support Converting Colors with the new Membership Option!

The pro membership hides all ads, plus gives you double the colors in the color bucket, and more awesome pro features!

[Learn more, Memberships starting at \\$2.50/m!](#)

**Follow me
on Twitter!**

@ConvertingColor