

Converting Colors

Decimal(13611195)

Have a look what the booklet for
Decimal(13611195) contains.

Decimal(13611195)	3
<i>Conversions</i>	4
<i>Details</i>	6
<i>Harmonies</i>	11
<i>Previews</i>	23
<i>Color Blindness Simulation</i>	26
<i>CSS Examples</i>	29

Color

Decimal(13611195)

Conversions

Conversions Part 1

Format	Color
Hex	CFB0BB
RGB	207, 176, 187
RGB Percent	81%, 69%, 73%
CMY	0.1882, 0.3098, 0.2667
CMYK	0.00, 0.15, 0.10, 0.19
HSL	339°, 24%, 75%
HSV	339°, 15%, 81%
XYZ	50.2271, 47.9039, 53.6128
YIQ	186.5230, 14.9450, 9.9930

Conversions

Conversions Part 2

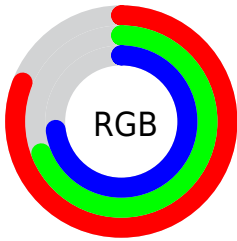
Format	Color
RYB	207, 176, 187
Decimal	13611195
CIELab	74.76, 13.01, -1.44
CIELCh	75, 13.092, 353.683
Yxy	47.9039, 0.3310, 0.3157
Android (android.graphics.Color)	4291801275 (0xFFCFB0BB)
YUV	186.5230, 0.2352, 17.9583
Hunter-Lab	69.2127, 8.4139, 2.5222

Details

The Decimal color **13611195** is a light color, and the websafe version is hex **CC9999**. A complement of this color would be **11587524**, and the grayscale version is **12303291**.

A 20% lighter version of the original color is **16771315**, and **9993094** is the 20% darker color. If you saturate the color by 10%, you get **13605806**, and if you desaturate by 10%, it is **13616584**.

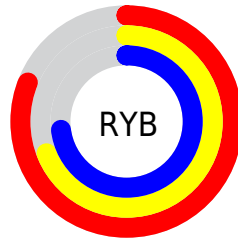
Distribution



Red (81%)

Green (69%)

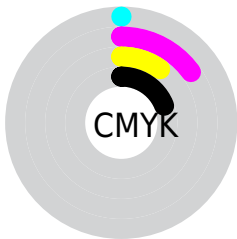
Blue (73%)



Red (81%)

Yellow (69%)

Blue (73%)

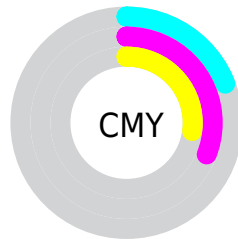


Cyan (0%)

Magenta (15%)

Yellow (10%)

Black (19%)



Cyan (19%)

Magenta (31%)

Yellow (27%)

Brightness & Saturation Gradients

These gradients show how the Decimal color 13611195 changes by changing the brightness by 10 percent. The first figure shows a shift by +10% for each color and the second figure -10%.

Similar to the brightness gradients but the following saturation gradients show a change of the Decimal color 13611195 by changing the saturation by 10% instead.

 13611195

 13611195

16777215

 11769248

 16771315


 9993094

 8282733

 6638164

 5059645

 3546664

 2164499

 0

 13611195

 13611195

 13605806

 13616584

 13600672

 13621718

 13595283

 13627107

 13589894

 13631472

 13584504

 13631486

 13579371

 13631487

 13573982

 13568592

 13566025

Harmonies

Analogous

The Analogous color harmony consists of three colors that are next to each other on the color wheel.



12956358



13611195



13807791

Triad

The Triadic color harmony groups three colors that are evenly spaced from another and form a triangle on the color wheel.



13611195



12040866



10337739

Complementary

The Complementary color scheme is a pair of colors which are on the opposite of each other on the color wheel.



13611195



11587524

Split Complementary

Split-complementary colors differ from the complementary color scheme. The scheme consists of three colors, the original color and two neighbors of the complement color.



10076097



13611195



11189673

Square

The Square scheme is like the rectangle color scheme, but the four colors are evenly spaced on the color wheel.



13611195



12891808



10403765



11057872

Rectangle

The Rectangle color scheme consists of four colors that form a rectangle on the color wheel.



13611195



13677224



10403765



10206920

Sweetspot

The Sweet Spot groups the original color and five complimentary colors.



13611195



16774648



12890319



8419707



0



8421504

Same Dimension

The Same Dimension uses a secret algorithm to generate beautiful new colors.



13611195



16765409



13612208



6905442



11010108



2686990

Inverse Universe

The Inverse Universe completely reimagines the original color for something new.



13611195



16765409



11586511



6905442



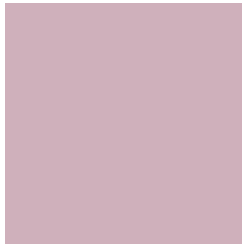
11010108



2686990

Previews

White Background



This preview shows how the Decimal color 13611195 looks on a white background.

Color Contrast Check

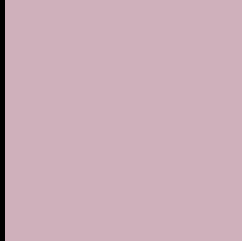
Large Text (above 18pt) WCAG AA × Fail

Any Text WCAG AA × Fail

Large Text (above 18pt) WCAG AAA × Fail

Any Text WCAG AAA × Fail

Black Background



This preview shows how the Decimal color 13611195 looks on a black background.

Color Contrast Check

Large Text (above 18pt) WCAG AA ✓ Pass

Any Text WCAG AA ✓ Pass

Large Text (above 18pt) WCAG AAA ✓ Pass

Any Text WCAG AAA ✓ Pass

If you want to check with other color combinations, try the [Color Contrast Checker](#).

Decimal 13611195 Background



This preview shows how black text looks on a background with the Decimal color 13611195.



This preview shows how white text looks on a background with the Decimal color 13611195.

Color Blindness Simulation

Color vision deficiency is a very complex topic, and I could not describe the different causes any better than Wikipedia does, so if you want to learn more, you should check out their [article about color blindness](#).


Dichromacy



Original Color
13611195

Protanopia
12171199

Deuteranopia
13218491



Tritanopia
13611197

Trichromacy



Original Color
13611195

Protanomaly
12694718

Deuteranomaly
13349307

Tritanomaly
13611196

Monochromacy



Original Color
13611195

Achromatopsia
12303291

Achromatomaly
12761019

CSS Examples

Text

The CSS property to change the color of the text to Decimal 13611195 is called "color". The color property can be set on classes, ids or directly on the HTML element.

This example shows how text in the color #CFB0BB looks like.

```
.text, #text, p{  
    color:#CFB0BB  
}
```

If you want to add a text shadow in that color use the text-shadow property, you can generate a text shadow directly with our [CSS Text Shadow Generator](#).

Here you see how black text with a 4 pixel #CFB0BB colored shadow looks like.

```
.shadow{ text-shadow: 4px 4px 2px #CFB0BB  
}
```

Border

The CSS property to change the border of an element to Decimal 13611195 is called "border". The border property can be set on classes, ids or directly on the HTML element.

This example shows the color as border, it can be applied via the CSS property "border" or "border-color".

```
.border, #border, table{ border:4px solid  
#CFB0BB }
```

If only the border color should be changed use the property `border-color`.

```
.border{ border-color:#CFB0BB }
```

If you want to add a box shadow in that color use:

Here you see how a box with a 4 pixel #CFB0BB colored shadow looks like.

```
.boxshadow{ -moz-box-shadow:4px 4px 4px  
4px #CFB0BB; -webkit-box-shadow:4px 4px  
4px 4px #CFB0BB; box-shadow:4px 4px 4px  
4px #CFB0BB }
```

Background

The CSS property to change the background color of an element to Decimal 13611195 is called "background". The background property can be set on classes, ids or directly on the HTML element.

```
.background, #background, body{  
background:#CFB0BB }
```

If only the background color should be changed can be used:

```
.background{ background-color:#CFB0BB }
```

This example shows the color as background, it is applied via the CSS property "background".

To optimize and compress your CSS code, you can use our [online CSS compressor and optimizer](#) based on csstidy. If you want to create a linear or radial gradient as background or border, check our [CSS Gradient Generator](#).

Hey! You found this booklet interesting? Support Converting Colors with the new Membership Option!

The pro membership hides all ads, plus gives you double the colors in the color bucket, and more awesome pro features!

[Learn more, Memberships starting at \\$2.50/m!](#)

**Follow me
on Twitter!**

@ConvertingColor