

Converting Colors

Decimal(13611691)

Have a look what the booklet for
Decimal(13611691) contains.

Decimal(13611691)	3
<i>Conversions</i>	4
<i>Details</i>	6
<i>Harmonies</i>	11
<i>Previews</i>	23
<i>Color Blindness Simulation</i>	26
<i>CSS Examples</i>	29

Color

Decimal(13611691)

Conversions

Conversions Part 1

Format	Color
Hex	CFB2AB
RGB	207, 178, 171
RGB Percent	81%, 70%, 67%
CMY	0.1882, 0.3020, 0.3294
CMYK	0.00, 0.14, 0.17, 0.19
HSL	12°, 27%, 74%
HSV	12°, 17%, 81%
XYZ	49.0032, 48.0465, 45.2192
YIQ	185.8730, 19.5310, 3.9710

Conversions

Conversions Part 2

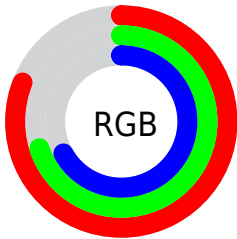
Format	Color
R _Y B	207, 180, 171
Decimal	13611691
CIE Lab	74.85, 9.31, 7.43
CIE LCh	75, 11.914, 38.574
Yxy	48.0465, 0.3444, 0.3377
Android (android.graphics.Color)	4291801771 (0xFFCFB2AB)
YUV	185.8730, -7.3324, 18.5284
Hunter-Lab	69.3156, 4.8898, 9.8420

Details

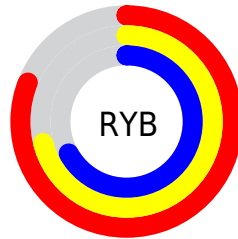
The Decimal color **13611691** is a light color, and the websafe version is hex **CC9999**. A complement of this color would be **11258063**, and the grayscale version is **12237498**.

A 20% lighter version of the original color is **16771810**, and **9993591** is the 20% darker color. If you saturate the color by 10%, you get **13607318**, and if you desaturate by 10%, it is **13616064**.

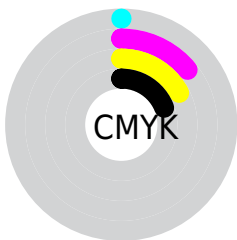
Distribution



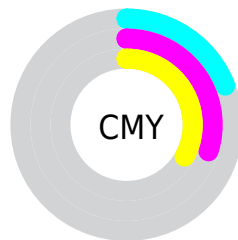
- Red (81%)
- Green (70%)
- Blue (67%)



- Red (81%)
- Yellow (71%)
- Blue (67%)



- Cyan (0%)
- Magenta (14%)
- Yellow (17%)
- Black (19%)



- Cyan (19%)
- Magenta (30%)
- Yellow (33%)

Brightness & Saturation Gradients

These gradients show how the Decimal color 13611691 changes by changing the brightness by 10 percent. The first figure shows a shift by +10% for each color and the second figure -10%.

Similar to the brightness gradients but the following saturation gradients show a change of the Decimal color 13611691 by changing the saturation by 10% instead.

 13611691

 13611691

16777215

 11769744

 16771810

 9993591

 8283230

 6638663

 4994608

 3481627

 2165248

 0

 13611691

 13611691

 13607318

 13616064

 13603202

 13620180

 13598829

 13624553

 13594456

 13628926

 13590339

 13631487

 13585967

 13581594

 13577477

 13576192

Harmonies

Analogous

The Analogous color harmony consists of three colors that are next to each other on the color wheel.



13611445



13611691



13219236

Triad

The Triadic color harmony groups three colors that are evenly spaced from another and form a triangle on the color wheel.



13611691



10927792



11647182

Complementary

The Complementary color scheme is a pair of colors which are on the opposite of each other on the color wheel.



13611691



11258063

Split Complementary

Split-complementary colors differ from the complementary color scheme. The scheme consists of three colors, the original color and two neighbors of the complement color.



10796236



13611691



10403771

Square

The Square scheme is like the rectangle color scheme, but the four colors are evenly spaced on the color wheel.



13611691



11648167



10337989



12498121

Rectangle

The Rectangle color scheme consists of four colors that form a rectangle on the color wheel.



13611691



12760994



10337989



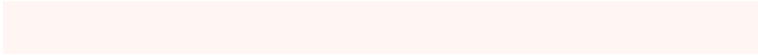
11319758

Sweetspot

The Sweet Spot groups the original color and five complimentary colors.



13611691



16774642



13609928



8419704



0



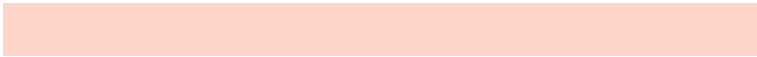
8421504

Same Dimension

The Same Dimension uses a secret algorithm to generate beautiful new colors.



13611691



16766153



13616299



6905950



11018496



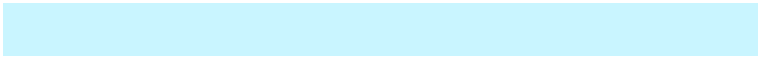
2689024

Inverse Universe

The Inverse Universe completely reimagines the original color for something new.



11258063



13235711



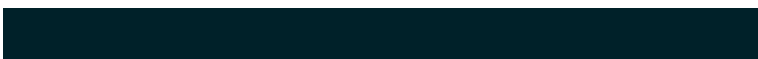
11253455



6186857



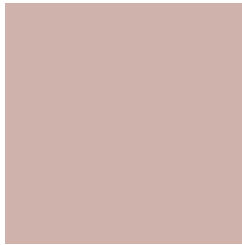
34984



8489

Previews

White Background



This preview shows how the Decimal color 13611691 looks on a white background.

Color Contrast Check

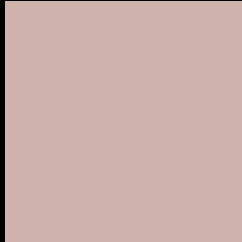
Large Text (above 18pt) WCAG AA × Fail

Any Text WCAG AA × Fail

Large Text (above 18pt) WCAG AAA × Fail

Any Text WCAG AAA × Fail

Black Background



This preview shows how the Decimal color 13611691 looks on a black background.

Color Contrast Check

Large Text (above 18pt) WCAG AA ✓ Pass

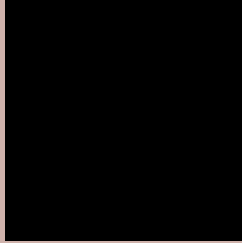
Any Text WCAG AA ✓ Pass

Large Text (above 18pt) WCAG AAA ✓ Pass

Any Text WCAG AAA ✓ Pass

If you want to check with other color combinations, try the [Color Contrast Checker](#).

Decimal 13611691 Background



This preview shows how black text looks on a background with the Decimal color 13611691.




This preview shows how white text looks on a background with the Decimal color 13611691.

Color Blindness Simulation

Color vision deficiency is a very complex topic, and I could not describe the different causes any better than Wikipedia does, so if you want to learn more, you should check out their [article about color blindness](#).

Dichromacy





Tritanopia
13742013

Trichromacy



Original Color
13611691

Protanomaly
12891821

Deuteranomaly
13611691

Tritanomaly
13676726

Monochromacy



Original Color
13611691

Achromatopsia
12237498

Achromatomaly
12761013

CSS Examples

Text

The CSS property to change the color of the text to Decimal 13611691 is called "color". The color property can be set on classes, ids or directly on the HTML element.

This example shows how text in the color #CFB2AB looks like.

```
.text, #text, p{  
  color:#CFB2AB  
}
```

If you want to add a text shadow in that color use the text-shadow property, you can generate a text shadow directly with our [CSS Text Shadow Generator](#).

Here you see how black text with a 4 pixel #CFB2AB colored shadow looks like.

```
.shadow{ text-shadow: 4px 4px 2px #CFB2AB
}
```

Border

The CSS property to change the border of an element to Decimal 13611691 is called "border". The border property can be set on classes, ids or directly on the HTML element.

This example shows the color as border, it can be applied via the CSS property "border" or "border-color".

```
.border, #border, table{ border:4px solid
#CFB2AB }
```

If only the border color should be changed use the property `border-color`.

```
.border{ border-color:#CFB2AB }
```

If you want to add a box shadow in that color use:

Here you see how a box with a 4 pixel #CFB2AB colored shadow looks like.

```
.boxshadow{ -moz-box-shadow:4px 4px 4px  
4px #CFB2AB; -webkit-box-shadow:4px 4px  
4px 4px #CFB2AB; box-shadow:4px 4px 4px  
4px #CFB2AB }
```

Background

The CSS property to change the background color of an element to Decimal 13611691 is called "background". The background property can be set on classes, ids or directly on the HTML element.

```
.background, #background, body{  
background:#CFB2AB }
```

If only the background color should be changed can be used:

```
.background{ background-color:#CFB2AB }
```

This example shows the color as background, it is applied via the CSS property "background".

To optimize and compress your CSS code, you can use our [online CSS compressor and optimizer](#) based on csstidy. If you want to create a linear or radial gradient as background or border, check our [CSS Gradient Generator](#).

Hey! You found this booklet interesting? Support Converting Colors with the new Membership Option!

The pro membership hides all ads, plus gives you double the colors in the color bucket, and more awesome pro features!

[Learn more, Memberships starting at \\$2.50/m!](#)

**Follow me
on Twitter!**

@ConvertingColor