

Converting Colors

Decimal(13611941)

Have a look what the booklet for
Decimal(13611941) contains.

Decimal(13611941)	3
<i>Conversions</i>	4
<i>Details</i>	6
<i>Harmonies</i>	11
<i>Previews</i>	23
<i>Color Blindness Simulation</i>	26
<i>CSS Examples</i>	29

Color

Decimal(13611941)

Conversions

Conversions Part 1

Format	Color
Hex	CFB3A5
RGB	207, 179, 165
RGB Percent	81%, 70%, 65%
CMY	0.1882, 0.2980, 0.3529
CMYK	0.00, 0.14, 0.20, 0.19
HSL	20°, 30%, 73%
HSV	20°, 20%, 81%
XYZ	48.6438, 48.2222, 42.3413
YIQ	185.7760, 21.1820, 1.5820

Conversions

Conversions Part 2

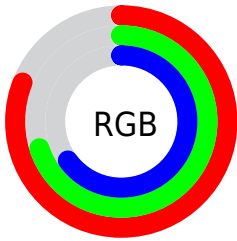
Format	Color
R_{YB}	207, 186, 165
Decimal	13611941
CIE _{Lab}	74.96, 7.85, 10.85
CIE _{LCh}	75, 13.398, 54.110
Yxy	48.2222, 0.3494, 0.3464
Android (android.graphics.Color)	4291802021 (0xFFCFB3A5)
YUV	185.7760, -10.2426, 18.6134
Hunter-Lab	69.4422, 3.5141, 12.4584

Details

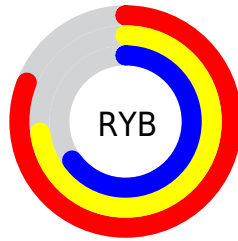
The Decimal color **13611941** is a light color, and the websafe version is hex **CC9999**. A complement of this color would be **10863055**, and the grayscale version is **12237498**.

A 20% lighter version of the original color is **16772060**, and **9993841** is the 20% darker color. If you saturate the color by 10%, you get **13608336**, and if you desaturate by 10%, it is **13615546**.

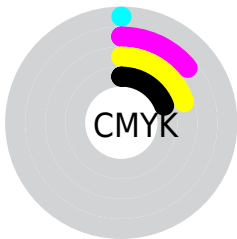
Distribution



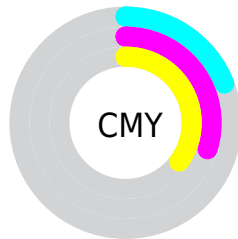
- Red (81%)
- Green (70%)
- Blue (65%)



- Red (81%)
- Yellow (73%)
- Blue (65%)



- Cyan (0%)
- Magenta (14%)
- Yellow (20%)
- Black (19%)



- Cyan (19%)
- Magenta (30%)
- Yellow (35%)

Brightness & Saturation Gradients

These gradients show how the Decimal color 13611941 changes by changing the brightness by 10 percent. The first figure shows a shift by +10% for each color and the second figure -10%.

Similar to the brightness gradients but the following saturation gradients show a change of the Decimal color 13611941 by changing the saturation by 10% instead.



13611941



13611941

16777215



11769995



16772060



9993841



16777209



8283481



6638913



4994859



3481879



2099968



0



13611941



13611941

 13608336

 13615546

 13604732

 13619150

 13601383

 13622499

 13597778

 13626104

 13594174

 13629695

 13590569

 13631487

 13586964

 13583616

Harmonies

Analogous

The Analogous color harmony consists of three colors that are next to each other on the color wheel.



13873583



13611941



12957600

Triad

The Triadic color harmony groups three colors that are evenly spaced from another and form a triangle on the color wheel.



13611941



10404022



12105423

Complementary

The Complementary color scheme is a pair of colors which are on the opposite of each other on the color wheel.



13611941



10863055

Split Complementary

Split-complementary colors differ from the complementary color scheme. The scheme consists of three colors, the original color and two neighbors of the complement color.



11057873



13611941



10076354

Square

The Square scheme is like the rectangle color scheme, but the four colors are evenly spaced on the color wheel.



13611941



11189930



10337996



13021895

Rectangle

The Rectangle color scheme consists of four colors that form a rectangle on the color wheel.



13611941



12368545



10337996



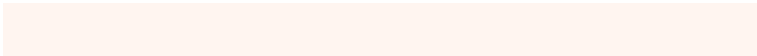
11778256

Sweetspot

The Sweet Spot groups the original color and five complimentary colors.



13611941



16774640



13608385



8419959



0



8421504

Same Dimension

The Same Dimension uses a secret algorithm to generate beautiful new colors.



13611941



16766658



13617061



6906462



11024384



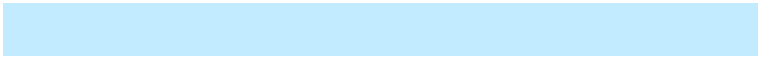
2690560

Inverse Universe

The Inverse Universe completely reimagines the original color for something new.



10863055



12774399



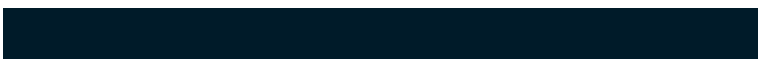
10857935



6186345



28840



6953

Previews

White Background



This preview shows how the Decimal color 13611941 looks on a white background.

Color Contrast Check

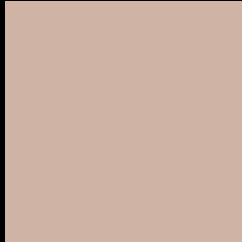
Large Text (above 18pt) WCAG AA × Fail

Any Text WCAG AA × Fail

Large Text (above 18pt) WCAG AAA × Fail

Any Text WCAG AAA × Fail

Black Background



This preview shows how the Decimal color 13611941 looks on a black background.

Color Contrast Check

Large Text (above 18pt) WCAG AA ✓ Pass

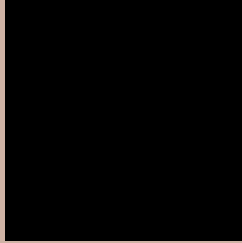
Any Text WCAG AA ✓ Pass

Large Text (above 18pt) WCAG AAA ✓ Pass

Any Text WCAG AAA ✓ Pass

If you want to check with other color combinations, try the [Color Contrast Checker](#).

Decimal 13611941 Background



This preview shows how black text looks on a background with the Decimal color 13611941.



This preview shows how white text looks on a background with the Decimal color 13611941.

Color Blindness Simulation

Color vision deficiency is a very complex topic, and I could not describe the different causes any better than Wikipedia does, so if you want to learn more, you should check out their [article about color blindness](#).

Dichromacy



Original Color
13611941

Protanopia
12630184

Deuteranopia
13808293



Tritanopia
13807549

Trichromacy



Original Color
13611941

Protanomaly
12957351

Deuteranomaly
13742757

Tritanomaly
13742260

Monochromacy



Original Color
13611941

Achromatopsia
12237498

Achromatomaly
12761010

CSS Examples

Text

The CSS property to change the color of the text to Decimal 13611941 is called "color". The color property can be set on classes, ids or directly on the HTML element.

This example shows how text in the color #CFB3A5 looks like.

```
.text, #text, p{  
    color:#CFB3A5  
}
```

If you want to add a text shadow in that color use the text-shadow property, you can generate a text shadow directly with our [CSS Text Shadow Generator](#).

Here you see how black text with a 4 pixel #CFB3A5 colored shadow looks like.

```
.shadow{ text-shadow: 4px 4px 2px #CFB3A5
}
```

Border

The CSS property to change the border of an element to Decimal 13611941 is called "border". The border property can be set on classes, ids or directly on the HTML element.

This example shows the color as border, it can be applied via the CSS property "border" or "border-color".

```
.border, #border, table{ border:4px solid
#CFB3A5 }
```

If only the border color should be changed use the property `border-color`.

```
.border{ border-color:#CFB3A5 }
```

If you want to add a box shadow in that color use:

Here you see how a box with a 4 pixel #CFB3A5 colored shadow looks like.

```
.boxshadow{ -moz-box-shadow:4px 4px 4px  
4px #CFB3A5; -webkit-box-shadow:4px 4px  
4px 4px #CFB3A5; box-shadow:4px 4px 4px  
4px #CFB3A5 }
```

Background

The CSS property to change the background color of an element to Decimal 13611941 is called "background". The background property can be set on classes, ids or directly on the HTML element.

```
.background, #background, body{  
background:#CFB3A5 }
```

If only the background color should be changed can be used:

```
.background{ background-color:#CFB3A5 }
```

This example shows the color as background, it is applied via the CSS property "background".

To optimize and compress your CSS code, you can use our [online CSS compressor and optimizer](#) based on csstidy. If you want to create a linear or radial gradient as background or border, check our [CSS Gradient Generator](#).

Hey! You found this booklet interesting? Support Converting Colors with the new Membership Option!

The pro membership hides all ads, plus gives you double the colors in the color bucket, and more awesome pro features!

[Learn more, Memberships starting at \\$2.50/m!](#)

**Follow me
on Twitter!**

@ConvertingColor