

# Converting Colors

Decimal(13612214)

Have a look what the booklet for  
Decimal(13612214) contains.

<b>Decimal(13612214)</b> .....	3
<i><b>Conversions</b></i> .....	4
<i><b>Details</b></i> .....	6
<i><b>Harmonies</b></i> .....	11
<i><b>Previews</b></i> .....	23
<i><b>Color Blindness Simulation</b></i> .....	26
<i><b>CSS Examples</b></i> .....	29

# **Color**

**Decimal(13612214)**

# Conversions

## Conversions Part 1

Format	Color
Hex	CFB4B6
RGB	207, 180, 182
RGB Percent	81%, 71%, 71%
CMY	0.1882, 0.2941, 0.2863
CMYK	0.00, 0.13, 0.12, 0.19
HSL	356°, 22%, 76%
HSV	356°, 13%, 81%
XYZ	50.4969, 49.2853, 51.1075
YIQ	188.3010, 15.4500, 6.3460

# Conversions

## Conversions Part 2

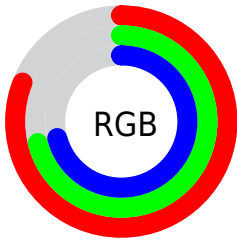
Format	Color
R <sub>Y</sub> B	207, 180, 182
Decimal	13612214
CIE Lab	75.63, 10.01, 2.55
CIE LCh	76, 10.329, 14.287
Yxy	49.2853, 0.3347, 0.3266
Android (android.graphics.Color)	4291802294 (0xFFCFB4B6)
YUV	188.3010, -3.1064, 16.3990
Hunter-Lab	70.2035, 5.5377, 5.9799

# Details

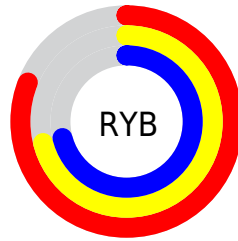
The Decimal color **13612214** is a light color, and the websafe version is hex **CCCCCC**. A complement of this color would be **11849677**, and the grayscale version is **12369084**.

A 20% lighter version of the original color is **16772334**, and **9994113** is the 20% darker color. If you saturate the color by 10%, you get **13606819**, and if you desaturate by 10%, it is **13617609**.

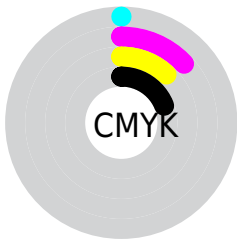
# Distribution



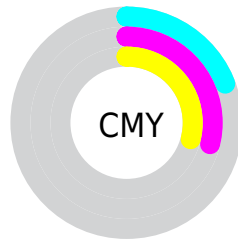
- Red (81%)
- Green (71%)
- Blue (71%)



- Red (81%)
- Yellow (71%)
- Blue (71%)



- Cyan (0%)
- Magenta (13%)
- Yellow (12%)
- Black (19%)



- Cyan (19%)
- Magenta (29%)
- Yellow (29%)

# Brightness & Saturation Gradients

These gradients show how the Decimal color 13612214 changes by changing the brightness by 10 percent. The first figure shows a shift by +10% for each color and the second figure -10%.

Similar to the brightness gradients but the following saturation gradients show a change of the Decimal color 13612214 by changing the saturation by 10% instead.



 13612214

 13612214

16777215

 11770267

 16772334

 9994113

 8283752

 6639184

 5060409

 3547684

 2165774

 0

 13612214

 13612214

 13606819

 13617609

 13601680

 13622748

 13596285

 13628144

 13590889

 13631487

 13585750

 13580355

 13574960

 13569565

 13565967

# Harmonies

## Analogous

The Analogous color harmony consists of three colors that are next to each other on the color wheel.



13350080



13612214



13546925

# Triad

The Triadic color harmony groups three colors that are evenly spaced from another and form a triangle on the color wheel.



13612214



11714221



11255244

# Complementary

The Complementary color scheme is a pair of colors which are on the opposite of each other on the color wheel.



13612214



11849677

# Split Complementary

Split-complementary colors differ from the complementary color scheme. The scheme consists of three colors, the original color and two neighbors of the complement color.



10796999



13612214



11124917

# Square

The Square scheme is like the rectangle color scheme, but the four colors are evenly spaced on the color wheel.



13612214



12434344



10731711



11975373

# Rectangle

The Rectangle color scheme consists of four colors that form a rectangle on the color wheel.



13612214



13285289



10731711



11058891



# Sweetspot

The Sweet Spot groups the original color and five complimentary colors.



13612214



16774646



13481167



8419706



0



8421504



# Same Dimension

The Same Dimension uses a secret algorithm to generate beautiful new colors.



13612214



16766681



13615028



6905439



11010060



2686979



# Inverse Universe

The Inverse Universe completely reimagines the original color for something new.



13612214



16766681



11846863



6905439



11010060



2686979



# Previews

## White Background



This preview shows how the Decimal color 13612214 looks on a white background.

## Color Contrast Check

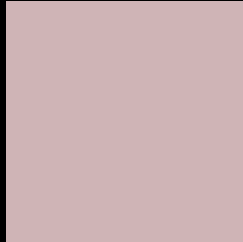
Large Text (above 18pt) WCAG AA × Fail

Any Text WCAG AA × Fail

Large Text (above 18pt) WCAG AAA × Fail

Any Text WCAG AAA × Fail

# Black Background



This preview shows how the Decimal color 13612214 looks on a black background.

## Color Contrast Check

Large Text (above 18pt) WCAG AA ✓ Pass

Any Text WCAG AA ✓ Pass

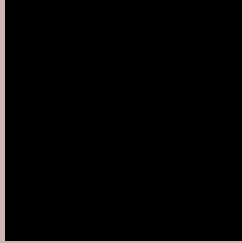
Large Text (above 18pt) WCAG AAA ✓ Pass

Any Text WCAG AAA ✓ Pass

If you want to check with other color combinations, try the [Color Contrast Checker](#).



## Decimal 13612214 Background



This preview shows how black text looks on a background with the Decimal color 13612214.



This preview shows how white text looks on a background with the Decimal color 13612214.

# Color Blindness Simulation

Color vision deficiency is a very complex topic, and I could not describe the different causes any better than Wikipedia does, so if you want to learn more, you should check out their [article about color blindness](#).

## Dichromacy



**Original Color**  
13612214

**Protanopia**  
12499641

**Deuteranopia**  
13546678



**Tritanopia**  
13677248

# Trichromacy



**Original Color**  
13612214

**Protanomaly**  
12892344

**Deuteranomaly**  
13546678

**Tritanomaly**  
13677500

# Monochromacy



**Original Color**  
13612214

**Achromatopsia**  
12369084

**Achromatomaly**  
12827066

# CSS Examples

## Text

The CSS property to change the color of the text to Decimal 13612214 is called "color". The color property can be set on classes, ids or directly on the HTML element.

This example shows how text in the color #CFB4B6 looks like.

```
.text, #text, p{  
  color:#CFB4B6  
}
```

If you want to add a text shadow in that color use the text-shadow property, you can generate a text shadow directly with our [CSS Text Shadow Generator](#).

Here you see how black text with a 4 pixel #CFB4B6 colored shadow looks like.

```
.shadow{ text-shadow: 4px 4px 2px #CFB4B6
}
```

## Border

The CSS property to change the border of an element to Decimal 13612214 is called "border". The border property can be set on classes, ids or directly on the HTML element.

This example shows the color as border, it can be applied via the CSS property "border" or "border-color".

```
.border, #border, table{ border:4px solid
#CFB4B6 }
```

If only the border color should be changed use the property `border-color`.

```
.border{ border-color:#CFB4B6 }
```

If you want to add a box shadow in that color use:

Here you see how a box with a 4 pixel #CFB4B6 colored shadow looks like.

```
.boxshadow{ -moz-box-shadow:4px 4px 4px  
4px #CFB4B6; -webkit-box-shadow:4px 4px  
4px 4px #CFB4B6; box-shadow:4px 4px 4px  
4px #CFB4B6 }
```

# Background

The CSS property to change the background color of an element to Decimal 13612214 is called "background". The background property can be set on classes, ids or directly on the HTML element.

```
.background, #background, body{  
background:#CFB4B6 }
```

If only the background color should be changed can be used:

```
.background{ background-color:#CFB4B6 }
```

This example shows the color as background, it is applied via the CSS property "background".

To optimize and compress your CSS code, you can use our [online CSS compressor and optimizer](#) based on csstidy. If you want to create a linear or radial gradient as background or border, check our [CSS Gradient Generator](#).



Hey! You found this booklet interesting? Support Converting Colors with the new Membership Option!

The pro membership hides all ads, plus gives you double the colors in the color bucket, and more awesome pro features!

**[Learn more, Memberships starting at \\$2.50/m!](#)**

**Follow me  
on Twitter!**

@ConvertingColor