

Converting Colors

Decimal(13612470)

Have a look what the booklet for
Decimal(13612470) contains.

Decimal(13612470)	3
<i>Conversions</i>	4
<i>Details</i>	6
<i>Harmonies</i>	11
<i>Previews</i>	23
<i>Color Blindness Simulation</i>	26
<i>CSS Examples</i>	29

Color

Decimal(13612470)

Conversions

Conversions Part 1

Format	Color
Hex	CFB5B6
RGB	207, 181, 182
RGB Percent	81%, 71%, 71%
CMY	0.1882, 0.2902, 0.2863
CMYK	0.00, 0.13, 0.12, 0.19
HSL	358°, 21%, 76%
HSV	358°, 13%, 81%
XYZ	50.6995, 49.6905, 51.1751
YIQ	188.8880, 15.1750, 5.8230

Conversions

Conversions Part 2

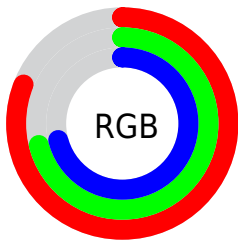
Format	Color
R_{YB}	207, 181, 182
Decimal	13612470
CIE Lab	75.88, 9.47, 2.91
CIE LCh	76, 9.909, 17.092
Yxy	49.6905, 0.3345, 0.3278
Android (android.graphics.Color)	4291802550 (0xFFCFB5B6)
YUV	188.8880, -3.3958, 15.8842
Hunter-Lab	70.4915, 5.0221, 6.3010

Details

The Decimal color **13612470** is a light color, and the websafe version is hex **CCCCCC**. A complement of this color would be **11915214**, and the grayscale version is **12434877**.

A 20% lighter version of the original color is **16772590**, and **9994369** is the 20% darker color. If you saturate the color by 10%, you get **13607074**, and if you desaturate by 10%, it is **13617866**.

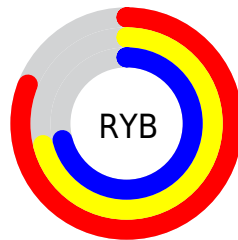
Distribution



Red (81%)

Green (71%)

Blue (71%)



Red (81%)

Yellow (71%)

Blue (71%)

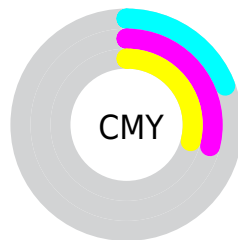


Cyan (0%)

Magenta (13%)

Yellow (12%)

Black (19%)



Cyan (19%)

Magenta (29%)

Yellow (29%)

Brightness & Saturation Gradients

These gradients show how the Decimal color 13612470 changes by changing the brightness by 10 percent. The first figure shows a shift by +10% for each color and the second figure -10%.

Similar to the brightness gradients but the following saturation gradients show a change of the Decimal color 13612470 by changing the saturation by 10% instead.

 13612470

 13612470

16777215

 11770523

 16772590

 9994369

 8284008

 6639440

 5060665

 3547684

 2166030

 0

 13612470

 13612470

 13607074

 13617866

 13601934

 13623006

 13596538

 13628402

 13591142

 13631487

 13586002

 13580607

 13575211

 13569815

 13565960

Harmonies

Analogous

The Analogous color harmony consists of three colors that are next to each other on the color wheel.



13350335



13612470



13481646

Triad

The Triadic color harmony groups three colors that are evenly spaced from another and form a triangle on the color wheel.



13612470



11714478



11386317

Complementary

The Complementary color scheme is a pair of colors which are on the opposite of each other on the color wheel.



13612470



11915214

Split Complementary

Split-complementary colors differ from the complementary color scheme. The scheme consists of three colors, the original color and two neighbors of the complement color.



10928072



13612470



11124919

Square

The Square scheme is like the rectangle color scheme, but the four colors are evenly spaced on the color wheel.



13612470



12434602



10863040



12106444

Rectangle

The Rectangle color scheme consists of four colors that form a rectangle on the color wheel.



13612470



13220010



10863040



11189964

Sweetspot

The Sweet Spot groups the original color and five complimentary colors.



13612470



16774645



13546959



8419705



0



8421504

Same Dimension

The Same Dimension uses a secret algorithm to generate beautiful new colors.



13612470



16767450



13615541



6905438



11010054



2686978

Inverse Universe

The Inverse Universe completely reimagines the original color for something new.



13612470



16767450



11912143



6905438



11010054



2686978

Previews

White Background



This preview shows how the Decimal color 13612470 looks on a white background.

Color Contrast Check

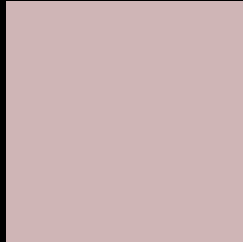
Large Text (above 18pt) WCAG AA × Fail

Any Text WCAG AA × Fail

Large Text (above 18pt) WCAG AAA × Fail

Any Text WCAG AAA × Fail

Black Background



This preview shows how the Decimal color 13612470 looks on a black background.

Color Contrast Check

Large Text (above 18pt) WCAG AA ✓ Pass

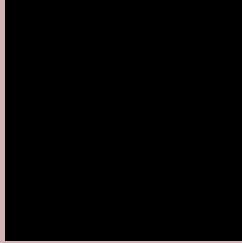
Any Text WCAG AA ✓ Pass

Large Text (above 18pt) WCAG AAA ✓ Pass

Any Text WCAG AAA ✓ Pass

If you want to check with other color combinations, try the [Color Contrast Checker](#).

Decimal 13612470 Background



This preview shows how black text looks on a background with the Decimal color 13612470.





This preview shows how white text looks on a background with the Decimal color 13612470.

Color Blindness Simulation

Color vision deficiency is a very complex topic, and I could not describe the different causes any better than Wikipedia does, so if you want to learn more, you should check out their [article about color blindness](#).

Dichromacy

	Original Color 13612470
	Protanopia 12565177
	Deuteranopia 13612470



Tritanopia
13677505

Trichromacy



Original Color
13612470

Protanomaly
12957880

Deuteranomaly
13612470

Tritanomaly
13677757

Monochromacy



Original Color
13612470

Achromatopsia
12434877

Achromatomaly
12892858

CSS Examples

Text

The CSS property to change the color of the text to Decimal 13612470 is called "color". The color property can be set on classes, ids or directly on the HTML element.

This example shows how text in the color #CFB5B6 looks like.

```
.text, #text, p{  
    color:#CFB5B6  
}
```

If you want to add a text shadow in that color use the text-shadow property, you can generate a text shadow directly with our [CSS Text Shadow Generator](#).

Here you see how black text with a 4 pixel #CFB5B6 colored shadow looks like.

```
.shadow{ text-shadow: 4px 4px 2px #CFB5B6
}
```

Border

The CSS property to change the border of an element to Decimal 13612470 is called "border". The border property can be set on classes, ids or directly on the HTML element.

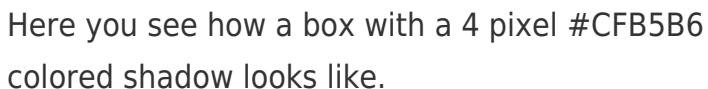
This example shows the color as border, it can be applied via the CSS property "border" or "border-color".

```
.border, #border, table{ border:4px solid
#CFB5B6 }
```

If only the border color should be changed use the property `border-color`.

```
.border{ border-color:#CFB5B6 }
```

If you want to add a box shadow in that color use:



Here you see how a box with a 4 pixel #CFB5B6 colored shadow looks like.

```
.boxshadow{ -moz-box-shadow:4px 4px 4px  
4px #CFB5B6; -webkit-box-shadow:4px 4px  
4px 4px #CFB5B6; box-shadow:4px 4px 4px  
4px #CFB5B6 }
```

Background

The CSS property to change the background color of an element to Decimal 13612470 is called "background". The background property can be set on classes, ids or directly on the HTML element.

```
.background, #background, body{  
background:#CFB5B6 }
```

If only the background color should be changed can be used:

```
.background{ background-color:#CFB5B6 }
```

This example shows the color as background, it is applied via the CSS property "background".

To optimize and compress your CSS code, you can use our [online CSS compressor and optimizer](#) based on csstidy. If you want to create a linear or radial gradient as background or border, check our [CSS Gradient Generator](#).

Hey! You found this booklet interesting? Support Converting Colors with the new Membership Option!

The pro membership hides all ads, plus gives you double the colors in the color bucket, and more awesome pro features!

[Learn more, Memberships starting at \\$2.50/m!](#)

**Follow me
on Twitter!**

@ConvertingColor