

Converting Colors

Decimal(13614254)

Have a look what the booklet for
Decimal(13614254) contains.

Decimal(13614254)	3
<i>Conversions</i>	4
<i>Details</i>	6
<i>Harmonies</i>	11
<i>Previews</i>	23
<i>Color Blindness Simulation</i>	26
<i>CSS Examples</i>	29

Color

Decimal(13614254)

Conversions

Conversions Part 1

Format	Color
Hex	CFBCAE
RGB	207, 188, 174
RGB Percent	81%, 74%, 68%
CMY	0.1882, 0.2627, 0.3176
CMYK	0.00, 0.09, 0.16, 0.19
HSL	25°, 26%, 75%
HSV	25°, 16%, 81%
XYZ	51.3553, 52.2878, 47.4302
YIQ	192.0850, 15.8180, -0.3260

Conversions

Conversions Part 2

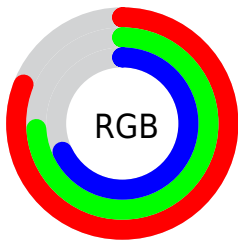
Format	Color
RYB	207, 198, 174
Decimal	13614254
CIELab	77.45, 4.43, 9.52
CIELCh	77, 10.495, 65.040
Yxy	52.2878, 0.3399, 0.3461
Android (android.graphics.Color)	4291804334 (0xFFCFBCAE)
YUV	192.0850, -8.9159, 13.0805
Hunter-Lab	72.3103, 0.2290, 11.7274

Details

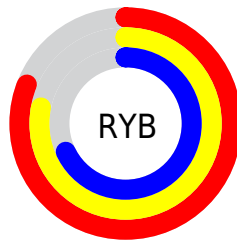
The Decimal color **13614254** is a light color, and the websafe version is hex **CCCCCC**. A complement of this color would be **11452879**, and the grayscale version is **12632256**.

A 20% lighter version of the original color is **16774373**, and **9996154** is the 20% darker color. If you saturate the color by 10%, you get **13611161**, and if you desaturate by 10%, it is **13617347**.

Distribution



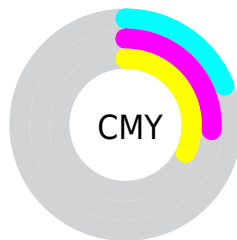
- Red (81%)
- Green (74%)
- Blue (68%)



- Red (81%)
- Yellow (78%)
- Blue (68%)



- Cyan (0%)
- Magenta (9%)
- Yellow (16%)
- Black (19%)



- Cyan (19%)
- Magenta (26%)
- Yellow (32%)

Brightness & Saturation Gradients

These gradients show how the Decimal color 13614254 changes by changing the brightness by 10 percent. The first figure shows a shift by +10% for each color and the second figure -10%.

Similar to the brightness gradients but the following saturation gradients show a change of the Decimal color 13614254 by changing the saturation by 10% instead.

 13614254

 13614254

16777215

 11772307

 16774373

 9996154

 8285793

 6640969

 5062195

 3549213

 2167812

 0

 13614254

 13614254

 13611161

 13617347

 13608069

 13620439

 13604976

 13623532

 13601883

 13626623

 13598790

 13629695

 13595698

 13631487

 13592861

 13589768

 13588480

Harmonies

Analogous

The Analogous color harmony consists of three colors that are next to each other on the color wheel.



13941429



13614254



13025196

Triad

The Triadic color harmony groups three colors that are evenly spaced from another and form a triangle on the color wheel.



13614254



11126209



12827855

Complementary

The Complementary color scheme is a pair of colors which are on the opposite of each other on the color wheel.



13614254



11452879

Split Complementary

Split-complementary colors differ from the complementary color scheme. The scheme consists of three colors, the original color and two neighbors of the complement color.



12042450



13614254



10995146

Square

The Square scheme is like the rectangle color scheme, but the four colors are evenly spaced on the color wheel.



13614254



11584695



11387857



13548232

Rectangle

The Rectangle color scheme consists of four colors that form a rectangle on the color wheel.



13614254



12501422



11387857



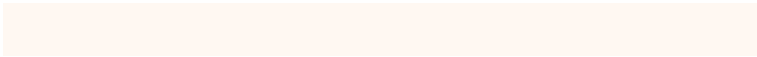
12565969

Sweetspot

The Sweet Spot groups the original color and five complimentary colors.



13614254



16775410



13610689



8420216



0



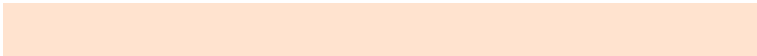
8421504

Same Dimension

The Same Dimension uses a secret algorithm to generate beautiful new colors.



13614254



16769999



13618350



6906718



11028224



2691328

Inverse Universe

The Inverse Universe completely reimagines the original color for something new.



11452879



13626111



11448783



6186089



25000



5929

Previews

White Background



This preview shows how the Decimal color 13614254 looks on a white background.

Color Contrast Check

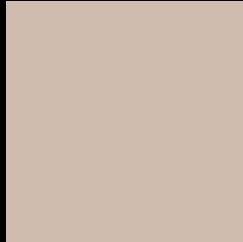
Large Text (above 18pt) WCAG AA × Fail

Any Text WCAG AA × Fail

Large Text (above 18pt) WCAG AAA × Fail

Any Text WCAG AAA × Fail

Black Background



This preview shows how the Decimal color 13614254 looks on a black background.

Color Contrast Check

Large Text (above 18pt) WCAG AA ✓ Pass

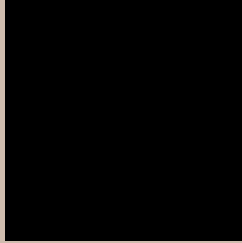
Any Text WCAG AA ✓ Pass

Large Text (above 18pt) WCAG AAA ✓ Pass

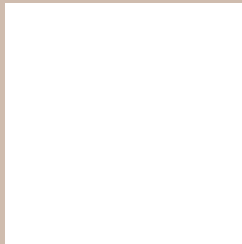
Any Text WCAG AAA ✓ Pass

If you want to check with other color combinations, try the [Color Contrast Checker](#).

Decimal 13614254 Background



This preview shows how black text looks on a background with the Decimal color 13614254.



This preview shows how white text looks on a background with the Decimal color 13614254.

Color Blindness Simulation

Color vision deficiency is a very complex topic, and I could not describe the different causes any better than Wikipedia does, so if you want to learn more, you should check out their [article about color blindness](#).


Dichromacy



Original Color
13614254

Protanopia
13090735

Deuteranopia
14203311



Tritanopia
13809863

Trichromacy



Original Color
13614254

Protanomaly
13287087

Deuteranomaly
14006959

Tritanomaly
13744574

Monochromacy



Original Color
13614254

Achromatopsia
12632256

Achromatomaly
12959673

CSS Examples

Text

The CSS property to change the color of the text to Decimal 13614254 is called "color". The color property can be set on classes, ids or directly on the HTML element.

This example shows how text in the color #CFBCAE looks like.

```
.text, #text, p{  
    color:#CFBCAE  
}
```

If you want to add a text shadow in that color use the text-shadow property, you can generate a text shadow directly with our [CSS Text Shadow Generator](#).

Here you see how black text with a 4 pixel #CFBCAE colored shadow looks like.

```
.shadow{ text-shadow: 4px 4px 2px #CFBCAE
}
```

Border

The CSS property to change the border of an element to Decimal 13614254 is called "border". The border property can be set on classes, ids or directly on the HTML element.

This example shows the color as border, it can be applied via the CSS property "border" or "border-color".

```
.border, #border, table{ border:4px solid
#CFBCAE }
```

If only the border color should be changed use the property `border-color`.

```
.border{ border-color:#CFBCAE }
```

If you want to add a box shadow in that color use:

Here you see how a box with a 4 pixel #CFBCAE colored shadow looks like.

```
.boxshadow{ -moz-box-shadow:4px 4px 4px  
4px #CFBCAE; -webkit-box-shadow:4px 4px  
4px 4px #CFBCAE; box-shadow:4px 4px 4px  
4px #CFBCAE }
```

Background

The CSS property to change the background color of an element to Decimal 13614254 is called "background". The background property can be set on classes, ids or directly on the HTML element.

```
.background, #background, body{  
background:#CFBCAE }
```

If only the background color should be changed can be used:

```
.background{ background-color:#CFBCAE }
```

This example shows the color as background, it is applied via the CSS property "background".

To optimize and compress your CSS code, you can use our [online CSS compressor and optimizer](#) based on csstidy. If you want to create a linear or radial gradient as background or border, check our [CSS Gradient Generator](#).

Hey! You found this booklet interesting? Support Converting Colors with the new Membership Option!

The pro membership hides all ads, plus gives you double the colors in the color bucket, and more awesome pro features!

[Learn more, Memberships starting at \\$2.50/m!](#)

**Follow me
on Twitter!**

@ConvertingColor