

Converting Colors

Decimal(13614269)

Have a look what the booklet for
Decimal(13614269) contains.

Decimal(13614269)	3
<i>Conversions</i>	4
<i>Details</i>	6
<i>Harmonies</i>	11
<i>Previews</i>	23
<i>Color Blindness Simulation</i>	26
<i>CSS Examples</i>	29

Color

Decimal(13614269)

Conversions

Conversions Part 1

Format	Color
Hex	CFBCBD
RGB	207, 188, 189
RGB Percent	81%, 74%, 74%
CMY	0.1882, 0.2627, 0.2588
CMYK	0.00, 0.09, 0.09, 0.19
HSL	357°, 17%, 77%
HSV	357°, 9%, 81%
XYZ	52.9007, 52.9060, 55.5678
YIQ	193.7950, 11.0030, 4.3390

Conversions

Conversions Part 2

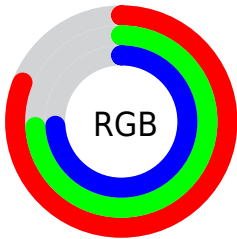
Format	Color
R _Y B	207, 188, 189
Decimal	13614269
CIE Lab	77.82, 6.89, 1.93
CIE LCh	78, 7.157, 15.646
Yxy	52.9060, 0.3278, 0.3278
Android (android.graphics.Color)	4291804349 (0xFFCFBCBD)
YUV	193.7950, -2.3639, 11.5808
Hunter-Lab	72.7365, 2.5328, 5.6203

Details

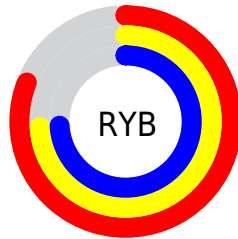
The Decimal color **13614269** is a light color, and the websafe version is hex **CCCCCC**. A complement of this color would be **12373966**, and the grayscale version is **12763842**.

A 20% lighter version of the original color is **16774389**, and **10061704** is the 20% darker color. If you saturate the color by 10%, you get **13608873**, and if you desaturate by 10%, it is **13619665**.

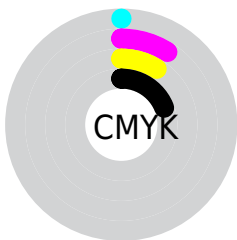
Distribution



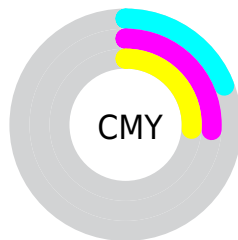
- Red (81%)
- Green (74%)
- Blue (74%)



- Red (81%)
- Yellow (74%)
- Blue (74%)



- Cyan (0%)
- Magenta (9%)
- Yellow (9%)
- Black (19%)



- Cyan (19%)
- Magenta (26%)
- Yellow (26%)

Brightness & Saturation Gradients

These gradients show how the Decimal color 13614269 changes by changing the brightness by 10 percent. The first figure shows a shift by +10% for each color and the second figure -10%.

Similar to the brightness gradients but the following saturation gradients show a change of the Decimal color 13614269 by changing the saturation by 10% instead.

■ 13614269

■ 13614269

16777215

■ 11772322

■ 16774389

■ 10061704

■ 8351086

■ 6640982

■ 5062207

■ 3549225

■ 2167829

■ 0

■ 13614269

■ 13614269

 13608873

 13619665

 13603734

 13624804

 13598338

 13630200

 13592943

 13631487

 13587803

 13582407

 13577012

 13571616

 13566477

Harmonies

Analogous

The Analogous color harmony consists of three colors that are next to each other on the color wheel.



13417668



13614269



13548983

Triad

The Triadic color harmony groups three colors that are evenly spaced from another and form a triangle on the color wheel.



13614269



12239799



11977421

Complementary

The Complementary color scheme is a pair of colors which are on the opposite of each other on the color wheel.



13614269



12373966

Split Complementary

Split-complementary colors differ from the complementary color scheme. The scheme consists of three colors, the original color and two neighbors of the complement color.



11650250



13614269



11846845

Square

The Square scheme is like the rectangle color scheme, but the four colors are evenly spaced on the color wheel.



13614269



12763572



11584708



12501197

Rectangle

The Rectangle color scheme consists of four colors that form a rectangle on the color wheel.



13614269



13352628



11584708



11846604

Sweetspot

The Sweet Spot groups the original color and five complimentary colors.



13614269



16775160



13548751



8419963



0



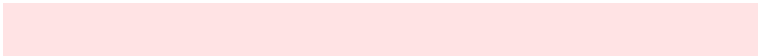
8421504

Same Dimension

The Same Dimension uses a secret algorithm to generate beautiful new colors.



13614269



16770020



13616316



6905439



11010057



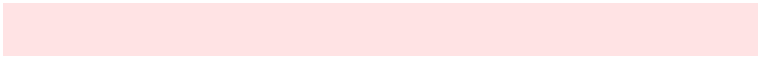
2686978

Inverse Universe

The Inverse Universe completely reimagines the original color for something new.



13614269



16770020



12371919



6905439



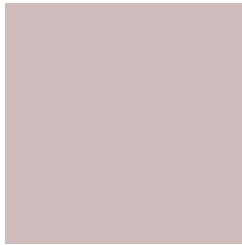
11010057



2686978

Previews

White Background



This preview shows how the Decimal color 13614269 looks on a white background.

Color Contrast Check

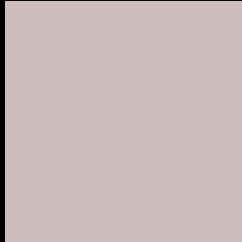
Large Text (above 18pt) WCAG AA × Fail

Any Text WCAG AA × Fail

Large Text (above 18pt) WCAG AAA × Fail

Any Text WCAG AAA × Fail

Black Background



This preview shows how the Decimal color 13614269 looks on a black background.

Color Contrast Check

Large Text (above 18pt) WCAG AA ✓ Pass

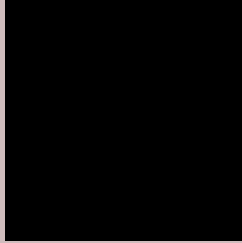
Any Text WCAG AA ✓ Pass

Large Text (above 18pt) WCAG AAA ✓ Pass

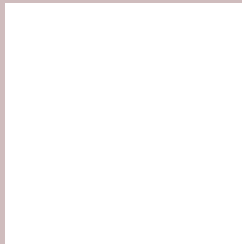
Any Text WCAG AAA ✓ Pass

If you want to check with other color combinations, try the [Color Contrast Checker](#).

Decimal 13614269 Background



This preview shows how black text looks on a background with the Decimal color 13614269.



This preview shows how white text looks on a background with the Decimal color 13614269.

Color Blindness Simulation

Color vision deficiency is a very complex topic, and I could not describe the different causes any better than Wikipedia does, so if you want to learn more, you should check out their [article about color blindness](#).

Dichromacy



Original Color
13614269

Protanopia
12894399

Deuteranopia
13941437



Tritanopia
13744841

Trichromacy



Original Color
13614269

Protanomaly
13156286

Deuteranomaly
13810621

Tritanomaly
13679557

Monochromacy



Original Color
13614269

Achromatopsia
12763842

Achromatomaly
13091008

CSS Examples

Text

The CSS property to change the color of the text to Decimal 13614269 is called "color". The color property can be set on classes, ids or directly on the HTML element.

This example shows how text in the color #CFBCBD looks like.

```
.text, #text, p{  
    color:#CFBCBD  
}
```

If you want to add a text shadow in that color use the text-shadow property, you can generate a text shadow directly with our [CSS Text Shadow Generator](#).

Here you see how black text with a 4 pixel #CFBCBD colored shadow looks like.

```
.shadow{ text-shadow: 4px 4px 2px #CFBCBD
}
```

Border

The CSS property to change the border of an element to Decimal 13614269 is called "border". The border property can be set on classes, ids or directly on the HTML element.

This example shows the color as border, it can be applied via the CSS property "border" or "border-color".

```
.border, #border, table{ border:4px solid
#CFBCBD }
```

If only the border color should be changed use the property `border-color`.

```
.border{ border-color:#CFBCBD }
```

If you want to add a box shadow in that color use:

Here you see how a box with a 4 pixel #CFBCBD colored shadow looks like.

```
.boxshadow{ -moz-box-shadow:4px 4px 4px  
4px #CFBCBD; -webkit-box-shadow:4px 4px  
4px 4px #CFBCBD; box-shadow:4px 4px 4px  
4px #CFBCBD }
```

Background

The CSS property to change the background color of an element to Decimal 13614269 is called "background". The background property can be set on classes, ids or directly on the HTML element.

```
.background, #background, body{  
background:#CFBCBD }
```

If only the background color should be changed can be used:

```
.background{ background-color:#CFBCBD }
```

This example shows the color as background, it is applied via the CSS property "background".

To optimize and compress your CSS code, you can use our [online CSS compressor and optimizer](#) based on csstidy. If you want to create a linear or radial gradient as background or border, check our [CSS Gradient Generator](#).

Hey! You found this booklet interesting? Support Converting Colors with the new Membership Option!

The pro membership hides all ads, plus gives you double the colors in the color bucket, and more awesome pro features!

[Learn more, Memberships starting at \\$2.50/m!](#)

**Follow me
on Twitter!**

@ConvertingColor