

Converting Colors

Decimal(13648760)

Have a look what the booklet for
Decimal(13648760) contains.

Decimal(13648760)	3
<i>Conversions</i>	4
<i>Details</i>	6
<i>Harmonies</i>	11
<i>Previews</i>	23
<i>Color Blindness Simulation</i>	26
<i>CSS Examples</i>	29

Color

Decimal(13648760)

Conversions

Conversions Part 1

Format	Color
Hex	D04378
RGB	208, 67, 120
RGB Percent	82%, 26%, 47%
CMY	0.1843, 0.7373, 0.5294
CMYK	0.00, 0.68, 0.42, 0.18
HSL	337°, 60%, 54%
HSV	337°, 68%, 82%
XYZ	31.4097, 18.7803, 19.7388
YIQ	115.2010, 67.0230, 46.3750

Conversions

Conversions Part 2

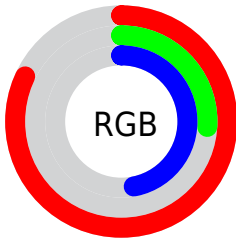
Format	Color
R_{YB}	208, 67, 120
Decimal	13648760
CIE _{Lab}	50.43, 59.35, 1.34
CIE _{LCh}	50, 59.366, 1.294
Yxy	18.7803, 0.4492, 0.2686
Android (android.graphics.Color)	4291838840 (0xFFD04378)
YUV	115.2010, 2.3659, 81.3847
Hunter-Lab	43.3362, 53.5370, 3.3299

Details

The Decimal color **13648760** is a dark color, and the websafe version is hex **CC3366**. The color can be described as middle muted rose. A complement of this color would be **4444315**, and the grayscale version is **7566195**.

A 20% lighter version of the original color is **16743596**, and **9764936** is the 20% darker color. If you saturate the color by 10%, you get **13643371**, and if you desaturate by 10%, it is **13654149**.

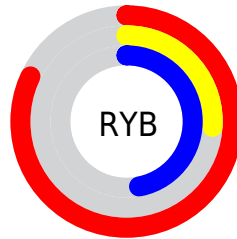
Distribution



Red (82%)

Green (26%)

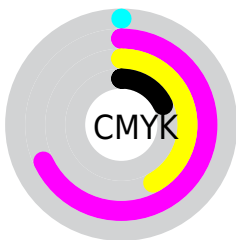
Blue (47%)



Red (82%)

Yellow (26%)

Blue (47%)

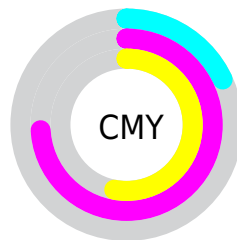


Cyan (0%)

Magenta (68%)

Yellow (42%)

Black (18%)



Cyan (18%)

Magenta (74%)

Yellow (53%)

Brightness & Saturation Gradients

These gradients show how the Decimal color 13648760 changes by changing the brightness by 10 percent. The first figure shows a shift by +10% for each color and the second figure -10%.

Similar to the brightness gradients but the following saturation gradients show a change of the Decimal color 13648760 by changing the saturation by 10% instead.

 13648760

 13648760

16777215

 11674463

 16743596

 9764936

 16750791

 7864370

 16757987

 5963805

 16765439

 4259843

 16773119

 2097153

 0

 13648760

 13648760

 13643371

 13654149

 13637982

 13659538

 13632849

 13664671

 13631566

 13670060

 13675449

 13680838

 13686227

 13691360

 13696749

Harmonies

Analogous

The Analogous color harmony consists of three colors that are next to each other on the color wheel.



11948457



13648760



13520199

Triad

The Triadic color harmony groups three colors that are evenly spaced from another and form a triangle on the color wheel.



13648760



5997586



35281

Complementary

The Complementary color scheme is a pair of colors which are on the opposite of each other on the color wheel.



13648760



4444315

Split Complementary

Split-complementary colors differ from the complementary color scheme. The scheme consists of three colors, the original color and two neighbors of the complement color.



36779



13648760



35909

Square

The Square scheme is like the rectangle color scheme, but the four colors are evenly spaced on the color wheel.



13648760



9336320



36729



32222

Rectangle

The Rectangle color scheme consists of four colors that form a rectangle on the color wheel.



13648760



12540712



36729



36038

Sweetspot

The Sweet Spot groups the original color and five complimentary colors.



13648760



16764127



10109904



8413548



0



8421504

Same Dimension

The Same Dimension uses a secret algorithm to generate beautiful new colors.



13648760



16724094



13652803



6905442



11010111



2686991

Inverse Universe

The Inverse Universe completely reimagines the original color for something new.



13648760



16724094



4440272



6905442



11010111



2686991

Previews

White Background



This preview shows how the Decimal color 13648760 looks on a white background.

Color Contrast Check

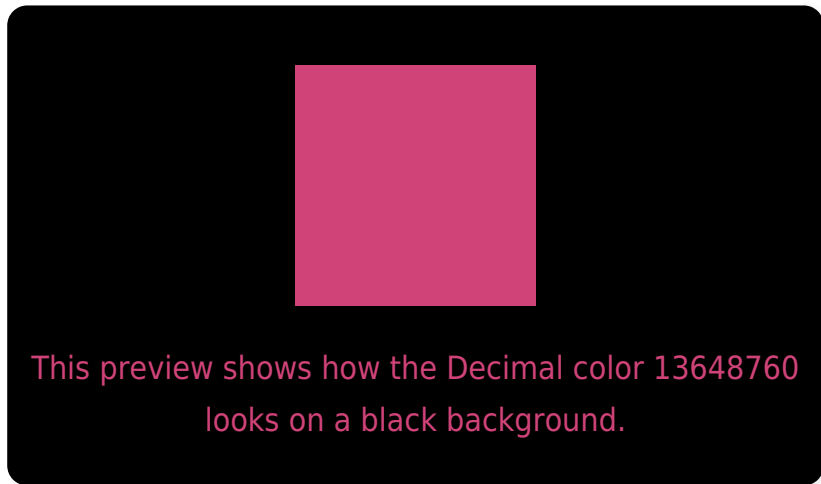
Large Text (above 18pt) WCAG AA ✓ Pass

Any Text WCAG AA × Fail

Large Text (above 18pt) WCAG AAA × Fail

Any Text WCAG AAA × Fail

Black Background



Color Contrast Check

Large Text (above 18pt) WCAG AA ✓ Pass

Any Text WCAG AA ✓ Pass

Large Text (above 18pt) WCAG AAA ✓ Pass

Any Text WCAG AAA × Fail

If you want to check with other color combinations, try the [Color Contrast Checker](#).

Decimal 13648760 Background



This preview shows how black text looks on a background with the Decimal color 13648760.




This preview shows how white text looks on a background with the Decimal color 13648760.

Color Blindness Simulation

Color vision deficiency is a very complex topic, and I could not describe the different causes any better than Wikipedia does, so if you want to learn more, you should check out their [article about color blindness](#).

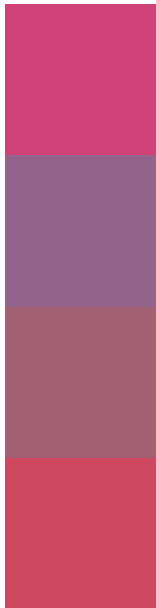
Dichromacy





Tritanopia
13454417

Trichromacy



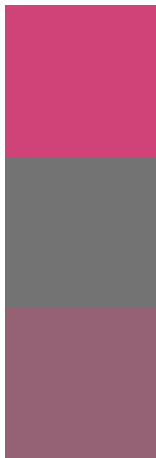
Original Color
13648760

Protanomaly
9725068

Deuteranomaly
10642036

Tritanomaly
13519199

Monochromacy



Original Color
13648760

Achromatopsia
7566195

Achromatomaly
9790069

CSS Examples

Text

The CSS property to change the color of the text to Decimal 13648760 is called "color". The color property can be set on classes, ids or directly on the HTML element.

This example shows how text in the color #D04378 looks like.

```
.text, #text, p{  
    color:#D04378  
}
```

If you want to add a text shadow in that color use the text-shadow property, you can generate a text shadow directly with our [CSS Text Shadow Generator](#).

Here you see how black text with a 4 pixel #D04378 colored shadow looks like.

```
.shadow{ text-shadow: 4px 4px 2px #D04378
}
```

Border

The CSS property to change the border of an element to Decimal 13648760 is called "border". The border property can be set on classes, ids or directly on the HTML element.

This example shows the color as border, it can be applied via the CSS property "border" or "border-color".

```
.border, #border, table{ border:4px solid
#D04378 }
```

If only the border color should be changed use the property `border-color`.

```
.border{ border-color:#D04378 }
```

If you want to add a box shadow in that color use:

Here you see how a box with a 4 pixel #D04378 colored shadow looks like.

```
.boxshadow{ -moz-box-shadow:4px 4px 4px  
4px #D04378; -webkit-box-shadow:4px 4px  
4px 4px #D04378; box-shadow:4px 4px 4px  
4px #D04378 }
```

Background

The CSS property to change the background color of an element to Decimal 13648760 is called "background". The background property can be set on classes, ids or directly on the HTML element.

```
.background, #background, body{  
background:#D04378 }
```

If only the background color should be changed can be used:

```
.background{ background-color:#D04378 }
```

This example shows the color as background, it is applied via the CSS property "background".

To optimize and compress your CSS code, you can use our [online CSS compressor and optimizer](#) based on csstidy. If you want to create a linear or radial gradient as background or border, check our [CSS Gradient Generator](#).

Hey! You found this booklet interesting? Support Converting Colors with the new Membership Option!

The pro membership hides all ads, plus gives you double the colors in the color bucket, and more awesome pro features!

[Learn more, Memberships starting at \\$2.50/m!](#)

**Follow me
on Twitter!**

@ConvertingColor