

Converting Colors

Decimal(13655412)

Have a look what the booklet for
Decimal(13655412) contains.

Decimal(13655412)	3
<i>Conversions</i>	4
<i>Details</i>	6
<i>Harmonies</i>	11
<i>Previews</i>	23
<i>Color Blindness Simulation</i>	26
<i>CSS Examples</i>	29

Color

Decimal(13655412)

Conversions

Conversions Part 1

Format	Color
Hex	D05D74
RGB	208, 93, 116
RGB Percent	82%, 36%, 45%
CMY	0.1843, 0.6353, 0.5451
CMYK	0.00, 0.55, 0.44, 0.18
HSL	348°, 55%, 59%
HSV	348°, 55%, 82%
XYZ	33.0792, 22.4996, 19.1224
YIQ	130.0070, 61.1570, 31.5330

Conversions

Conversions Part 2

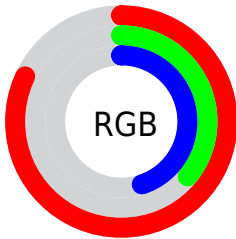
Format	Color
R_{YB}	208, 93, 116
Decimal	13655412
CIE _{Lab}	54.55, 47.59, 9.64
CIE _{LCh}	55, 48.561, 11.452
Yxy	22.4996, 0.4428, 0.3012
Android (android.graphics.Color)	4291845492 (0xFFD05D74)
YUV	130.0070, -6.9055, 68.3999
Hunter-Lab	47.4337, 41.4728, 9.3015

Details

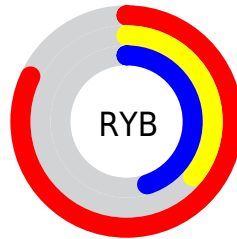
The Decimal color **13655412** is a dark color, and the websafe version is hex **CC6666**. The color can be described as middle muted rose. A complement of this color would be **6148281**, and the grayscale version is **8553090**.

A 20% lighter version of the original color is **16749480**, and **9774916** is the 20% darker color. If you saturate the color by 10%, you get **13650019**, and if you desaturate by 10%, it is **13660805**.

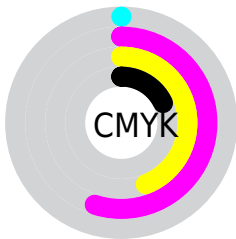
Distribution



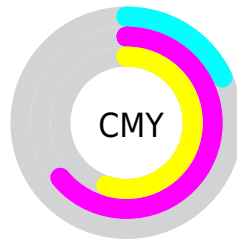
- Red (82%)
- Green (36%)
- Blue (45%)



- Red (82%)
- Yellow (36%)
- Blue (45%)



- Cyan (0%)
- Magenta (55%)
- Yellow (44%)
- Black (18%)



- Cyan (18%)
- Magenta (64%)
- Yellow (55%)

Brightness & Saturation Gradients

These gradients show how the Decimal color 13655412 changes by changing the brightness by 10 percent. The first figure shows a shift by +10% for each color and the second figure -10%.

Similar to the brightness gradients but the following saturation gradients show a change of the Decimal color 13655412 by changing the saturation by 10% instead.



13655412



13655412

16777215



11682396



16749480



9774916



16756675



7930158



16763871



6094874



16771323



4325376



2490369



0



13655412



13655412



13650019



13660805

 13644627

 13666197

 13639490

 13671334

 13634097

 13676727

 13631530

 13682119

 13687512

 13692904

 13697017

 13697023

Harmonies

Analogous

The Analogous color harmony consists of three colors that are next to each other on the color wheel.



12738974



13655412



13133645

Triad

The Triadic color harmony groups three colors that are evenly spaced from another and form a triangle on the color wheel.



13655412



6066240



36562

Complementary

The Complementary color scheme is a pair of colors which are on the opposite of each other on the color wheel.



13655412



6148281

Split Complementary

Split-complementary colors differ from the complementary color scheme. The scheme consists of three colors, the original color and two neighbors of the complement color.



38329



13655412



38246

Square

The Square scheme is like the rectangle color scheme, but the four colors are evenly spaced on the color wheel.



13655412



9078058



38802



5472981

Rectangle

The Rectangle color scheme consists of four colors that form a rectangle on the color wheel.



13655412



12153144



38802



37324

Sweetspot

The Sweet Spot groups the original color and five complimentary colors.



13655412



16766172



12148176



8414827



0



8421504

Same Dimension

The Same Dimension uses a secret algorithm to generate beautiful new colors.



13655412



16734072



13664093



6905440



11010082



2686984

Inverse Universe

The Inverse Universe completely reimagines the original color for something new.



13655412



16734072



6139344



6905440



11010082



2686984

Previews

White Background



This preview shows how the Decimal color 13655412 looks on a white background.

Color Contrast Check

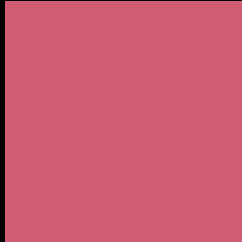
Large Text (above 18pt) WCAG AA ✓ Pass

Any Text WCAG AA × Fail

Large Text (above 18pt) WCAG AAA × Fail

Any Text WCAG AAA × Fail

Black Background



This preview shows how the Decimal color 13655412 looks on a black background.

Color Contrast Check

Large Text (above 18pt) WCAG AA ✓ Pass

Any Text WCAG AA ✓ Pass

Large Text (above 18pt) WCAG AAA ✓ Pass

Any Text WCAG AAA × Fail

If you want to check with other color combinations, try the [Color Contrast Checker](#).

Decimal 13655412 Background



This preview shows how black text looks on a background with the Decimal color 13655412.

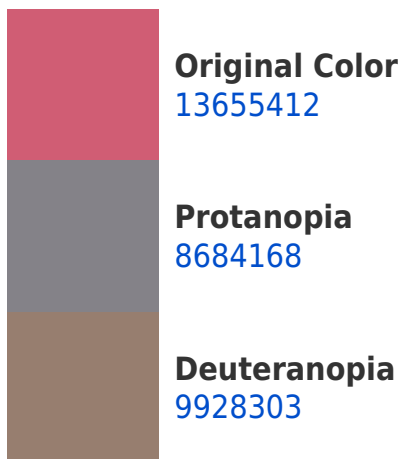



This preview shows how white text looks on a background with the Decimal color 13655412.

Color Blindness Simulation

Color vision deficiency is a very complex topic, and I could not describe the different causes any better than Wikipedia does, so if you want to learn more, you should check out their [article about color blindness](#).

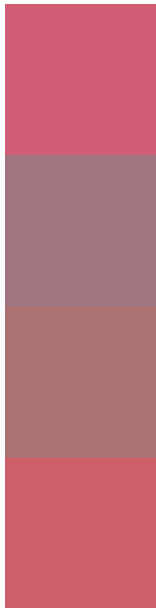
Dichromacy





Tritanopia
13590374

Trichromacy



Original Color
13655412

Protanomaly
10515841

Deuteranomaly
11301489

Tritanomaly
13590123

Monochromacy



Original Color
13655412

Achromatopsia
8553090

Achromatomaly
10384765

CSS Examples

Text

The CSS property to change the color of the text to Decimal 13655412 is called "color". The color property can be set on classes, ids or directly on the HTML element.

This example shows how text in the color #D05D74 looks like.

```
.text, #text, p{  
  color:#D05D74  
}
```

If you want to add a text shadow in that color use the text-shadow property, you can generate a text shadow directly with our [CSS Text Shadow Generator](#).

Here you see how black text with a 4 pixel #D05D74 colored shadow looks like.

```
.shadow{ text-shadow: 4px 4px 2px #D05D74
}
```

Border

The CSS property to change the border of an element to Decimal 13655412 is called "border". The border property can be set on classes, ids or directly on the HTML element.

This example shows the color as border, it can be applied via the CSS property "border" or "border-color".

```
.border, #border, table{ border:4px solid
#D05D74 }
```

If only the border color should be changed use the property `border-color`.

```
.border{ border-color:#D05D74 }
```

If you want to add a box shadow in that color use:

Here you see how a box with a 4 pixel #D05D74 colored shadow looks like.

```
.boxshadow{ -moz-box-shadow:4px 4px 4px  
4px #D05D74; -webkit-box-shadow:4px 4px  
4px 4px #D05D74; box-shadow:4px 4px 4px  
4px #D05D74 }
```

Background

The CSS property to change the background color of an element to Decimal 13655412 is called "background". The background property can be set on classes, ids or directly on the HTML element.

```
.background, #background, body{  
background:#D05D74 }
```

If only the background color should be changed can be used:

```
.background{ background-color:#D05D74 }
```

This example shows the color as background, it is applied via the CSS property "background".

To optimize and compress your CSS code, you can use our [online CSS compressor and optimizer](#) based on csstidy. If you want to create a linear or radial gradient as background or border, check our [CSS Gradient Generator](#).

Hey! You found this booklet interesting? Support Converting Colors with the new Membership Option!

The pro membership hides all ads, plus gives you double the colors in the color bucket, and more awesome pro features!

[Learn more, Memberships starting at \\$2.50/m!](#)

**Follow me
on Twitter!**

@ConvertingColor