

Converting Colors

Decimal(13663902)

Have a look what the booklet for
Decimal(13663902) contains.

Decimal(13663902)	3
<i>Conversions</i>	4
<i>Details</i>	6
<i>Harmonies</i>	11
<i>Previews</i>	23
<i>Color Blindness Simulation</i>	26
<i>CSS Examples</i>	29

Color

Decimal(13663902)

Conversions

Conversions Part 1

Format	Color
Hex	D07E9E
RGB	208, 126, 158
RGB Percent	82%, 49%, 62%
CMY	0.1843, 0.5059, 0.3804
CMYK	0.00, 0.39, 0.24, 0.18
HSL	337°, 47%, 65%
HSV	337°, 39%, 82%
XYZ	39.6448, 30.8002, 36.2033
YIQ	154.1660, 38.6000, 27.3360

Conversions

Conversions Part 2

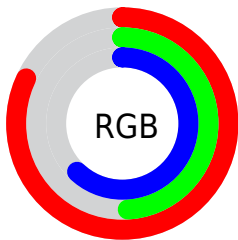
Format	Color
RYB	208, 126, 158
Decimal	13663902
CIELab	62.34, 35.92, -3.49
CIELCh	62, 36.085, 354.451
Yxy	30.8002, 0.3717, 0.2888
Android (android.graphics.Color)	4291853982 (0xFFD07E9E)
YUV	154.1660, 1.8902, 47.2124
Hunter-Lab	55.4980, 30.3896, 0.1716

Details

The Decimal color **13663902** is a light color, and the websafe version is hex **CC6699**. A complement of this color would be **8310960**, and the grayscale version is **10132122**.

A 20% lighter version of the original color is **16757973**, and **9980779** is the 20% darker color. If you saturate the color by 10%, you get **13658513**, and if you desaturate by 10%, it is **13669291**.

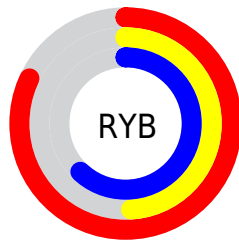
Distribution



Red (82%)

Green (49%)

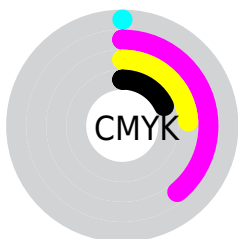
Blue (62%)



Red (82%)

Yellow (49%)

Blue (62%)

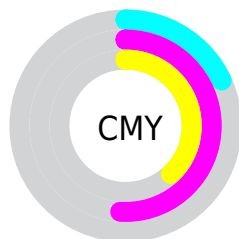


Cyan (0%)

Magenta (39%)

Yellow (24%)

Black (18%)



Cyan (18%)

Magenta (51%)

Yellow (38%)

Brightness & Saturation Gradients

These gradients show how the Decimal color 13663902 changes by changing the brightness by 10 percent. The first figure shows a shift by +10% for each color and the second figure -10%.

Similar to the brightness gradients but the following saturation gradients show a change of the Decimal color 13663902 by changing the saturation by 10% instead.

 13663902

 13663902

16777215

 11822212

 16757973

 9980779

 16765169

 8204883

 16772607

 6428988

 4718630

 3211281

 524288

 0

 13663902

 13663902

 13658513

 13669291

 13653125

 13674679

 13647992

 13679812

 13642603

 13685201

 13637215

 13690589

 13631826

 13695978

 13631569

 13697015

 13697023

Harmonies

Analogous

The Analogous color harmony consists of three colors that are next to each other on the color wheel.



12158396



13663902



13991806

Triad

The Triadic color harmony groups three colors that are evenly spaced from another and form a triangle on the color wheel.



13663902



9543003



1418442

Complementary

The Complementary color scheme is a pair of colors which are on the opposite of each other on the color wheel.



13663902



8310960

Split Complementary

Split-complementary colors differ from the complementary color scheme. The scheme consists of three colors, the original color and two neighbors of the complement color.



42928



13663902



7054448

Square

The Square scheme is like the rectangle color scheme, but the four colors are evenly spaced on the color wheel.



13663902



11637591



4171663



6069462

Rectangle

The Rectangle color scheme consists of four colors that form a rectangle on the color wheel.



13663902



13534315



4171663



42435

Sweetspot

The Sweet Spot groups the original color and five complimentary colors.



13663902



16769260



11501264



8416885



0



8421504

Same Dimension

The Same Dimension uses a secret algorithm to generate beautiful new colors.



13663902



16746422



13665918



6905442



11010114



2686992

Inverse Universe

The Inverse Universe completely reimagines the original color for something new.



13663902



16746422



8308944



6905442



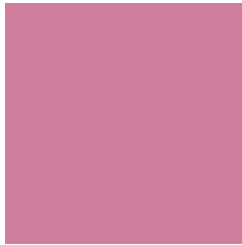
11010114



2686992

Previews

White Background



This preview shows how the Decimal color 13663902 looks on a white background.

Color Contrast Check

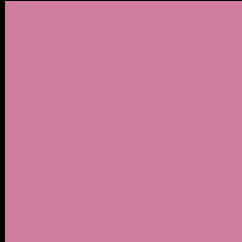
Large Text (above 18pt) WCAG AA × Fail

Any Text WCAG AA × Fail

Large Text (above 18pt) WCAG AAA × Fail

Any Text WCAG AAA × Fail

Black Background



This preview shows how the Decimal color 13663902 looks on a black background.

Color Contrast Check

Large Text (above 18pt) WCAG AA ✓ Pass

Any Text WCAG AA ✓ Pass

Large Text (above 18pt) WCAG AAA ✓ Pass

Any Text WCAG AAA ✓ Pass

If you want to check with other color combinations, try the [Color Contrast Checker](#).

Decimal 13663902 Background



This preview shows how black text looks on a background with the Decimal color 13663902.




This preview shows how white text looks on a background with the Decimal color 13663902.

Color Blindness Simulation

Color vision deficiency is a very complex topic, and I could not describe the different causes any better than Wikipedia does, so if you want to learn more, you should check out their [article about color blindness](#).

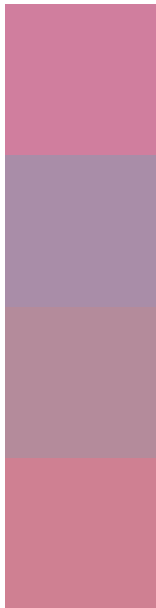
Dichromacy





Tritanopia
13533579

Trichromacy



Original Color
13663902

Protanomaly
11111848

Deuteranomaly
11832219

Tritanomaly
13598866

Monochromacy



Original Color
13663902

Achromatopsia
10132122

Achromatomaly
11440283

CSS Examples

Text

The CSS property to change the color of the text to Decimal 13663902 is called "color". The color property can be set on classes, ids or directly on the HTML element.

This example shows how text in the color #D07E9E looks like.

```
.text, #text, p{  
    color:#D07E9E  
}
```

If you want to add a text shadow in that color use the text-shadow property, you can generate a text shadow directly with our [CSS Text Shadow Generator](#).

Here you see how black text with a 4 pixel #D07E9E colored shadow looks like.

```
.shadow{ text-shadow: 4px 4px 2px #D07E9E
}
```

Border

The CSS property to change the border of an element to Decimal 13663902 is called "border". The border property can be set on classes, ids or directly on the HTML element.

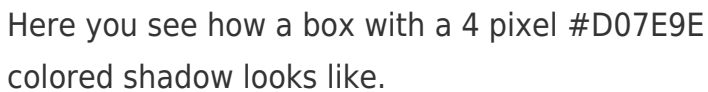
This example shows the color as border, it can be applied via the CSS property "border" or "border-color".

```
.border, #border, table{ border:4px solid
#D07E9E }
```

If only the border color should be changed use the property `border-color`.

```
.border{ border-color:#D07E9E }
```

If you want to add a box shadow in that color use:



Here you see how a box with a 4 pixel `#D07E9E` colored shadow looks like.

```
.boxshadow{ -moz-box-shadow:4px 4px 4px  
4px #D07E9E; -webkit-box-shadow:4px 4px  
4px 4px #D07E9E; box-shadow:4px 4px 4px  
4px #D07E9E }
```

Background

The CSS property to change the background color of an element to Decimal 13663902 is called "background". The background property can be set on classes, ids or directly on the HTML element.

```
.background, #background, body{  
background:#D07E9E }
```

If only the background color should be changed can be used:

```
.background{ background-color:#D07E9E }
```

This example shows the color as background, it is applied via the CSS property "background".

To optimize and compress your CSS code, you can use our [online CSS compressor and optimizer](#) based on csstidy. If you want to create a linear or radial gradient as background or border, check our [CSS Gradient Generator](#).

Hey! You found this booklet interesting? Support Converting Colors with the new Membership Option!

The pro membership hides all ads, plus gives you double the colors in the color bucket, and more awesome pro features!

[Learn more, Memberships starting at \\$2.50/m!](#)

**Follow me
on Twitter!**

@ConvertingColor