

# Converting Colors

Decimal(13667212)

Have a look what the booklet for  
Decimal(13667212) contains.

<b>Decimal(13667212)</b> .....	3
<i><b>Conversions</b></i> .....	4
<i><b>Details</b></i> .....	6
<i><b>Harmonies</b></i> .....	11
<i><b>Previews</b></i> .....	23
<i><b>Color Blindness Simulation</b></i> .....	26
<i><b>CSS Examples</b></i> .....	29

# **Color**

**Decimal(13667212)**

# Conversions

## Conversions Part 1

Format	Color
Hex	D08B8C
RGB	208, 139, 140
RGB Percent	82%, 55%, 55%
CMY	0.1843, 0.4549, 0.4510
CMYK	0.00, 0.33, 0.33, 0.18
HSL	359°, 42%, 68%
HSV	359°, 33%, 82%
XYZ	39.9787, 33.7686, 29.2218
YIQ	159.7450, 40.8030, 14.9390

# Conversions

## Conversions Part 2

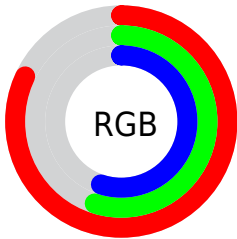
Format	Color
R <sub>Y</sub> B	208, 139, 140
Decimal	13667212
CIE Lab	64.78, 26.44, 10.27
CIE LCh	65, 28.368, 21.217
Yxy	33.7686, 0.3883, 0.3279
Android (android.graphics.Color)	4291857292 (0xFFD08B8C)
YUV	159.7450, -9.7343, 42.3196
Hunter-Lab	58.1107, 21.1095, 10.8627

# Details

The Decimal color **13667212** is a light color, and the websafe version is hex **CC9999**. A complement of this color would be **9162959**, and the grayscale version is **10526880**.

A 20% lighter version of the original color is **16761281**, and **9984090** is the 20% darker color. If you saturate the color by 10%, you get **13661816**, and if you desaturate by 10%, it is **13672608**.

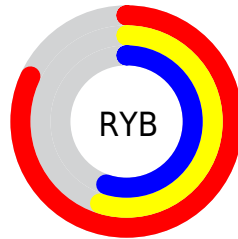
# Distribution



Red (82%)

Green (55%)

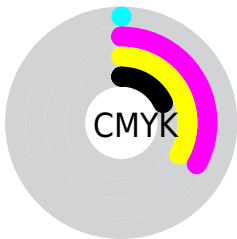
Blue (55%)



Red (82%)

Yellow (55%)

Blue (55%)

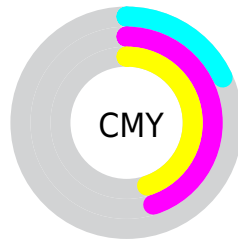


Cyan (0%)

Magenta (33%)

Yellow (33%)

Black (18%)



Cyan (18%)

Magenta (45%)

Yellow (45%)

# Brightness & Saturation Gradients

These gradients show how the Decimal color 13667212 changes by changing the brightness by 10 percent. The first figure shows a shift by +10% for each color and the second figure -10%.

Similar to the brightness gradients but the following saturation gradients show a change of the Decimal color 13667212 by changing the saturation by 10% instead.



 13667212

 13667212

16777215

 11825523

 16761281

 9984090

 16768477

 8208451

 16775930

 6433069

 4722968

 3211264

 655360

 0

 13667212

 13667212

 13661816

 13672608

 13656419

 13678005

 13651279

 13683145

 13645882

 13688542

 13640486

 13693938

 13635089

 13697023

 13631491

# Harmonies

## Analogous

The Analogous color harmony consists of three colors that are next to each other on the color wheel.



13274022



13667212



13144439

# Triad

The Triadic color harmony groups three colors that are evenly spaced from another and form a triangle on the color wheel.



13667212



8365949



7447247

# Complementary

The Complementary color scheme is a pair of colors which are on the opposite of each other on the color wheel.



13667212



9162959

# Split Complementary

Split-complementary colors differ from the complementary color scheme. The scheme consists of three colors, the original color and two neighbors of the complement color.



5417156



13667212



6466453

# Square

The Square scheme is like the rectangle color scheme, but the four colors are evenly spaced on the color wheel.



13667212



10264941



5090223



9869772

# Rectangle

The Rectangle color scheme consists of four colors that form a rectangle on the color wheel.



13667212



12424814



5090223



6661325

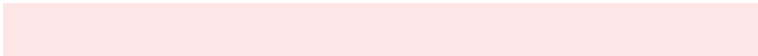


# Sweetspot

The Sweet Spot groups the original color and five complimentary colors.



13667212



16770790



13601744



8417392



0



8421504



# Same Dimension

The Same Dimension uses a secret algorithm to generate beautiful new colors.



13667212



16751002



13675659



6905438



11010050



2686977



# Inverse Universe

The Inverse Universe completely reimagines the original color for something new.



13667212



16751002



9154512



6905438



11010050

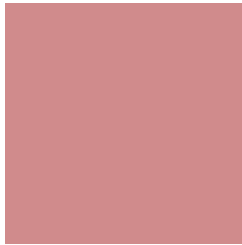


2686977



# Previews

## White Background



This preview shows how the Decimal color 13667212 looks on a white background.

## Color Contrast Check

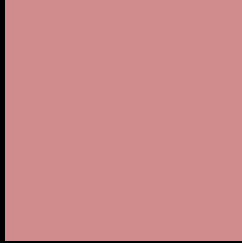
Large Text (above 18pt) WCAG AA × Fail

Any Text WCAG AA × Fail

Large Text (above 18pt) WCAG AAA × Fail

Any Text WCAG AAA × Fail

# Black Background



This preview shows how the Decimal color 13667212 looks on a black background.

## Color Contrast Check

Large Text (above 18pt) WCAG AA ✓ Pass

Any Text WCAG AA ✓ Pass

Large Text (above 18pt) WCAG AAA ✓ Pass

Any Text WCAG AAA ✓ Pass

If you want to check with other color combinations, try the [Color Contrast Checker](#).



## Decimal 13667212 Background



This preview shows how black text looks on a background with the Decimal color 13667212.



This preview shows how white text looks on a background with the Decimal color 13667212.

# Color Blindness Simulation

Color vision deficiency is a very complex topic, and I could not describe the different causes any better than Wikipedia does, so if you want to learn more, you should check out their [article about color blindness](#).

## Dichromacy



**Original Color**  
13667212

**Protanopia**  
10657173

**Deuteranopia**  
11835530



**Tritanopia**  
13732500

# Trichromacy



**Original Color**  
13667212

**Protanomaly**  
11769490

**Deuteranomaly**  
12489611

**Tritanomaly**  
13732497

# Monochromacy



**Original Color**  
13667212

**Achromatopsia**  
10526880

**Achromatomaly**  
11638937

# CSS Examples

## Text

The CSS property to change the color of the text to Decimal 13667212 is called "color". The color property can be set on classes, ids or directly on the HTML element.

This example shows how text in the color #D08B8C looks like.

```
.text, #text, p{  
    color:#D08B8C  
}
```

If you want to add a text shadow in that color use the text-shadow property, you can generate a text shadow directly with our [CSS Text Shadow Generator](#).

Here you see how black text with a 4 pixel #D08B8C colored shadow looks like.

```
.shadow{ text-shadow: 4px 4px 2px #D08B8C
}
```

## Border

The CSS property to change the border of an element to Decimal 13667212 is called "border". The border property can be set on classes, ids or directly on the HTML element.

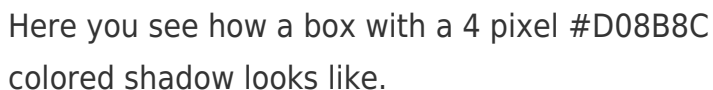
This example shows the color as border, it can be applied via the CSS property "border" or "border-color".

```
.border, #border, table{ border:4px solid
#D08B8C }
```

If only the border color should be changed use the property `border-color`.

```
.border{ border-color:#D08B8C }
```

If you want to add a box shadow in that color use:



Here you see how a box with a 4 pixel #D08B8C colored shadow looks like.

```
.boxshadow{ -moz-box-shadow:4px 4px 4px  
4px #D08B8C; -webkit-box-shadow:4px 4px  
4px 4px #D08B8C; box-shadow:4px 4px 4px  
4px #D08B8C }
```

# Background

The CSS property to change the background color of an element to Decimal 13667212 is called "background". The background property can be set on classes, ids or directly on the HTML element.

```
.background, #background, body{  
background:#D08B8C }
```

If only the background color should be changed can be used:

```
.background{ background-color:#D08B8C }
```

This example shows the color as background, it is applied via the CSS property "background".

To optimize and compress your CSS code, you can use our [online CSS compressor and optimizer](#) based on csstidy. If you want to create a linear or radial gradient as background or border, check our [CSS Gradient Generator](#).



Hey! You found this booklet interesting? Support Converting Colors with the new Membership Option!

The pro membership hides all ads, plus gives you double the colors in the color bucket, and more awesome pro features!

**[Learn more, Memberships starting at \\$2.50/m!](#)**

**Follow me  
on Twitter!**

@ConvertingColor