

Converting Colors

Decimal(13668492)

Have a look what the booklet for
Decimal(13668492) contains.

Decimal(13668492)	3
<i>Conversions</i>	4
<i>Details</i>	6
<i>Harmonies</i>	11
<i>Previews</i>	23
<i>Color Blindness Simulation</i>	26
<i>CSS Examples</i>	29

Color

Decimal(13668492)

Conversions

Conversions Part 1

Format	Color
Hex	D0908C
RGB	208, 144, 140
RGB Percent	82%, 56%, 55%
CMY	0.1843, 0.4353, 0.4510
CMYK	0.00, 0.31, 0.33, 0.18
HSL	4°, 42%, 68%
HSV	4°, 33%, 82%
XYZ	40.7193, 35.2499, 29.4687
YIQ	162.6800, 39.4280, 12.3240

Conversions

Conversions Part 2

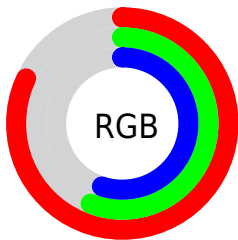
Format	Color
R _Y B	208, 144, 140
Decimal	13668492
CIE Lab	65.94, 23.73, 11.91
CIE LCh	66, 26.548, 26.659
Yxy	35.2499, 0.3862, 0.3343
Android (android.graphics.Color)	4291858572 (0xFFD0908C)
YUV	162.6800, -11.1812, 39.7456
Hunter-Lab	59.3716, 18.5218, 12.1319

Details

The Decimal color **13668492** is a light color, and the websafe version is hex **CC9999**. A complement of this color would be **9227472**, and the grayscale version is **10724259**.

A 20% lighter version of the original color is **16762562**, and **9985370** is the 20% darker color. If you saturate the color by 10%, you get **13663351**, and if you desaturate by 10%, it is **13673633**.

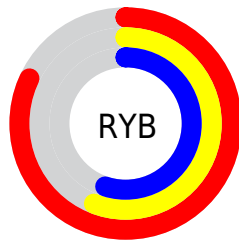
Distribution



Red (82%)

Green (56%)

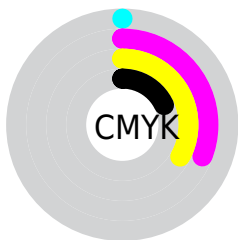
Blue (55%)



Red (82%)

Yellow (56%)

Blue (55%)

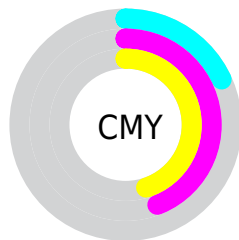


Cyan (0%)

Magenta (31%)

Yellow (33%)

Black (18%)



Cyan (18%)

Magenta (44%)

Yellow (45%)

Brightness & Saturation Gradients

These gradients show how the Decimal color 13668492 changes by changing the brightness by 10 percent. The first figure shows a shift by +10% for each color and the second figure -10%.

Similar to the brightness gradients but the following saturation gradients show a change of the Decimal color 13668492 by changing the saturation by 10% instead.

 13668492

 13668492

16777215

 11826803

 16762562

 9985370

 16769757

 8209731

 16777210

 6434348

 4790040

 3211264

 983040

 0

 13668492

 13668492

 13663351

 13673633

 13658466

 13678518

 13653326

 13683658

 13648441

 13688543

 13643300

 13693684

 13638415

 13697023

 13634560

Harmonies

Analogous

The Analogous color harmony consists of three colors that are next to each other on the color wheel.



13471652



13668492



13080185

Triad

The Triadic color harmony groups three colors that are evenly spaced from another and form a triangle on the color wheel.



13668492



8366981



8299471

Complementary

The Complementary color scheme is a pair of colors which are on the opposite of each other on the color wheel.



13668492



9227472

Split Complementary

Split-complementary colors differ from the complementary color scheme. The scheme consists of three colors, the original color and two neighbors of the complement color.



6400711



13668492



6729117

Square

The Square scheme is like the rectangle color scheme, but the four colors are evenly spaced on the color wheel.



13668492



10200437



5746101



10525643

Rectangle

The Rectangle color scheme consists of four colors that form a rectangle on the color wheel.



13668492



12295026



5746101



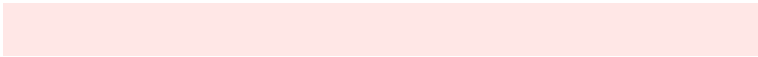
7579342

Sweetspot

The Sweet Spot groups the original color and five complimentary colors.



13668492



16771046



13667533



8417648



0



8421504

Same Dimension

The Same Dimension uses a secret algorithm to generate beautiful new colors.



13668492



16753052



13676940



6905694



11012608



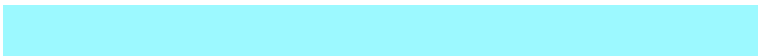
2687488

Inverse Universe

The Inverse Universe completely reimagines the original color for something new.



9227472



10287615



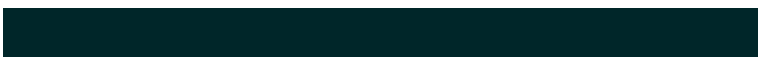
9219024



6187113



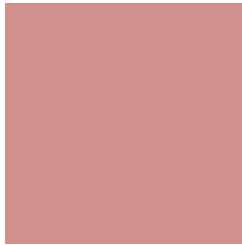
40616



9769

Previews

White Background



This preview shows how the Decimal color 13668492 looks on a white background.

Color Contrast Check

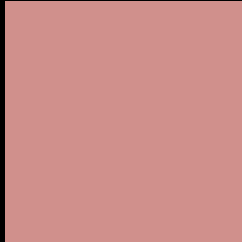
Large Text (above 18pt) WCAG AA × Fail

Any Text WCAG AA × Fail

Large Text (above 18pt) WCAG AAA × Fail

Any Text WCAG AAA × Fail

Black Background



This preview shows how the Decimal color 13668492 looks on a black background.

Color Contrast Check

Large Text (above 18pt) WCAG AA ✓ Pass

Any Text WCAG AA ✓ Pass

Large Text (above 18pt) WCAG AAA ✓ Pass

Any Text WCAG AAA ✓ Pass

If you want to check with other color combinations, try the [Color Contrast Checker](#).

Decimal 13668492 Background



This preview shows how black text looks on a background with the Decimal color 13668492.



This preview shows how white text looks on a background with the Decimal color 13668492.

Color Blindness Simulation

Color vision deficiency is a very complex topic, and I could not describe the different causes any better than Wikipedia does, so if you want to learn more, you should check out their [article about color blindness](#).

Dichromacy



Original Color
13668492

Protanopia
10920084

Deuteranopia
12098442



Tritanopia
13733529

Trichromacy



Original Color
13668492

Protanomaly
11901585

Deuteranomaly
12687243

Tritanomaly
13733780

Monochromacy



Original Color
13668492

Achromatopsia
10724259

Achromatomaly
11771035

CSS Examples

Text

The CSS property to change the color of the text to Decimal 13668492 is called "color". The color property can be set on classes, ids or directly on the HTML element.

This example shows how text in the color #D0908C looks like.

```
.text, #text, p{  
    color:#D0908C  
}
```

If you want to add a text shadow in that color use the text-shadow property, you can generate a text shadow directly with our [CSS Text Shadow Generator](#).

Here you see how black text with a 4 pixel #D0908C colored shadow looks like.

```
.shadow{ text-shadow: 4px 4px 2px #D0908C
}
```

Border

The CSS property to change the border of an element to Decimal 13668492 is called "border". The border property can be set on classes, ids or directly on the HTML element.

This example shows the color as border, it can be applied via the CSS property "border" or "border-color".

```
.border, #border, table{ border:4px solid
#D0908C }
```

If only the border color should be changed use the property `border-color`.

```
.border{ border-color:#D0908C }
```

If you want to add a box shadow in that color use:

Here you see how a box with a 4 pixel #D0908C colored shadow looks like.

```
.boxshadow{ -moz-box-shadow:4px 4px 4px  
4px #D0908C; -webkit-box-shadow:4px 4px  
4px 4px #D0908C; box-shadow:4px 4px 4px  
4px #D0908C }
```

Background

The CSS property to change the background color of an element to Decimal 13668492 is called "background". The background property can be set on classes, ids or directly on the HTML element.

```
.background, #background, body{  
background:#D0908C }
```

If only the background color should be changed can be used:

```
.background{ background-color:#D0908C }
```

This example shows the color as background, it is applied via the CSS property "background".

To optimize and compress your CSS code, you can use our [online CSS compressor and optimizer](#) based on csstidy. If you want to create a linear or radial gradient as background or border, check our [CSS Gradient Generator](#).

Hey! You found this booklet interesting? Support Converting Colors with the new Membership Option!

The pro membership hides all ads, plus gives you double the colors in the color bucket, and more awesome pro features!

[Learn more, Memberships starting at \\$2.50/m!](#)

**Follow me
on Twitter!**

@ConvertingColor