

# Converting Colors

Decimal(13671564)

Have a look what the booklet for  
Decimal(13671564) contains.

<b>Decimal(13671564)</b> .....	3
<i><b>Conversions</b></i> .....	4
<i><b>Details</b></i> .....	6
<i><b>Harmonies</b></i> .....	11
<i><b>Previews</b></i> .....	23
<i><b>Color Blindness Simulation</b></i> .....	26
<i><b>CSS Examples</b></i> .....	29

# **Color**

**Decimal(13671564)**

# Conversions

## Conversions Part 1

Format	Color
Hex	D09C8C
RGB	208, 156, 140
RGB Percent	82%, 61%, 55%
CMY	0.1843, 0.3882, 0.4510
CMYK	0.00, 0.25, 0.33, 0.18
HSL	14°, 42%, 68%
HSV	14°, 33%, 82%
XYZ	42.6345, 39.0803, 30.1071
YIQ	169.7240, 36.1280, 6.0480

# Conversions

## Conversions Part 2

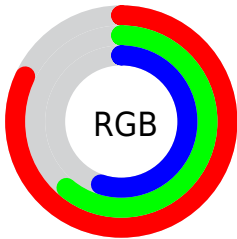
<b>Format</b>	<b>Color</b>
R <sub>Y</sub> B	208, 161, 140
Decimal	13671564
CIE Lab	68.81, 17.19, 15.93
CIE LCh	69, 23.433, 42.817
Yxy	39.0803, 0.3813, 0.3495
Android (android.graphics.Color)	4291861644 (0xFFD09C8C)
YUV	169.7240, -14.6539, 33.5681
Hunter-Lab	62.5142, 12.3366, 15.2056

# Details

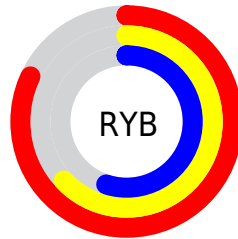
The Decimal color **13671564** is a light color, and the websafe version is hex **CC9999**. A complement of this color would be **9224400**, and the grayscale version is **11184810**.

A 20% lighter version of the original color is **16765890**, and **9988442** is the 20% darker color. If you saturate the color by 10%, you get **13667447**, and if you desaturate by 10%, it is **13675681**.

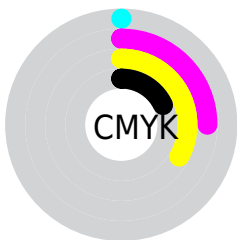
# Distribution



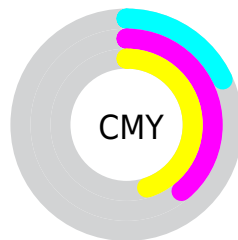
- Red (82%)
- Green (61%)
- Blue (55%)



- Red (82%)
- Yellow (63%)
- Blue (55%)



- Cyan (0%)
- Magenta (25%)
- Yellow (33%)
- Black (18%)



- Cyan (18%)
- Magenta (39%)
- Yellow (45%)

# Brightness & Saturation Gradients

These gradients show how the Decimal color 13671564 changes by changing the brightness by 10 percent. The first figure shows a shift by +10% for each color and the second figure -10%.

Similar to the brightness gradients but the following saturation gradients show a change of the Decimal color 13671564 by changing the saturation by 10% instead.



 13671564

 13671564

16777215

 11829874

 16765890

 9988442

 16773085

 8212546

 16777210

 6502700

 4858647

 3280384

 1638401

 0

 13671564

 13671564

 13667447

 13675681

 13663330

 13679798

 13659214

 13683914

 13655097

 13688031

 13650980

 13692148

 13647119

 13695999

 13644032

 13697023

# Harmonies

## Analogous

The Analogous color harmony consists of three colors that are next to each other on the color wheel.



13867423



13671564



12821120

# Triad

The Triadic color harmony groups three colors that are evenly spaced from another and form a triangle on the color wheel.



13671564



8369051



10201041

# Complementary

The Complementary color scheme is a pair of colors which are on the opposite of each other on the color wheel.



13671564



9224400

# Split Complementary

Split-complementary colors differ from the complementary color scheme. The scheme consists of three colors, the original color and two neighbors of the complement color.



8367568



13671564



7255216

# Square

The Square scheme is like the rectangle color scheme, but the four colors are evenly spaced on the color wheel.



13671564



9875336



7189188



12033991

# Rectangle

The Rectangle color scheme consists of four colors that form a rectangle on the color wheel.



13671564



11970430



7189188



9546194

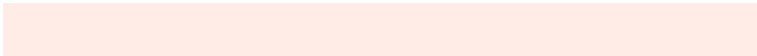


# Sweetspot

The Sweet Spot groups the original color and five complimentary colors.



13671564



16772326



13667520



8418416



0



8421504



# Same Dimension

The Same Dimension uses a secret algorithm to generate beautiful new colors.



13671564



16757660



13680268



6906206



11020288



2689536

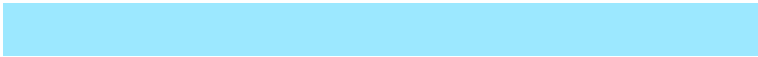


# Inverse Universe

The Inverse Universe completely reimagines the original color for something new.



9224400



10283263



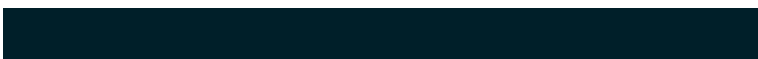
9215696



6186601



33192



7977



# Previews

## White Background



This preview shows how the Decimal color 13671564 looks on a white background.

## Color Contrast Check

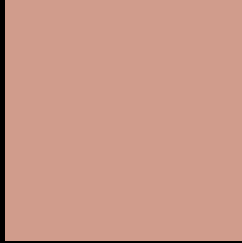
Large Text (above 18pt) WCAG AA × Fail

Any Text WCAG AA × Fail

Large Text (above 18pt) WCAG AAA × Fail

Any Text WCAG AAA × Fail

# Black Background



This preview shows how the Decimal color 13671564 looks on a black background.

## Color Contrast Check

Large Text (above 18pt) WCAG AA ✓ Pass

Any Text WCAG AA ✓ Pass

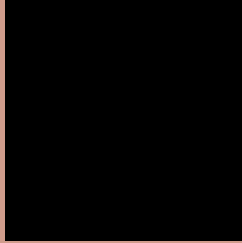
Large Text (above 18pt) WCAG AAA ✓ Pass

Any Text WCAG AAA ✓ Pass

If you want to check with other color combinations, try the [Color Contrast Checker](#).



## Decimal 13671564 Background



This preview shows how black text looks on a background with the Decimal color 13671564.

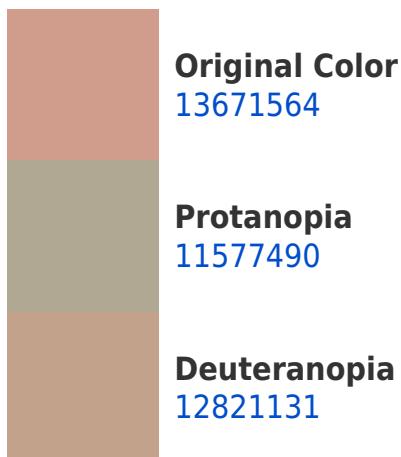


This preview shows how white text looks on a background with the Decimal color 13671564.

# Color Blindness Simulation

Color vision deficiency is a very complex topic, and I could not describe the different causes any better than Wikipedia does, so if you want to learn more, you should check out their [article about color blindness](#).

## Dichromacy





**Tritanopia**  
13801636

# Trichromacy



**Original Color**  
13671564

**Protanomaly**  
12362896

**Deuteranomaly**  
13148299

**Tritanomaly**  
13736347

# Monochromacy



**Original Color**  
13671564

**Achromatopsia**  
11184810

**Achromatomaly**  
12101023

# CSS Examples

## Text

The CSS property to change the color of the text to Decimal 13671564 is called "color". The color property can be set on classes, ids or directly on the HTML element.

This example shows how text in the color #D09C8C looks like.

```
.text, #text, p{  
    color:#D09C8C  
}
```

If you want to add a text shadow in that color use the text-shadow property, you can generate a text shadow directly with our [CSS Text Shadow Generator](#).

Here you see how black text with a 4 pixel #D09C8C colored shadow looks like.

```
.shadow{ text-shadow: 4px 4px 2px #D09C8C
}
```

## Border

The CSS property to change the border of an element to Decimal 13671564 is called "border". The border property can be set on classes, ids or directly on the HTML element.

This example shows the color as border, it can be applied via the CSS property "border" or "border-color".

```
.border, #border, table{ border:4px solid
#D09C8C }
```

If only the border color should be changed use the property `border-color`.

```
.border{ border-color:#D09C8C }
```

If you want to add a box shadow in that color use:

Here you see how a box with a 4 pixel #D09C8C colored shadow looks like.

```
.boxshadow{ -moz-box-shadow:4px 4px 4px  
4px #D09C8C; -webkit-box-shadow:4px 4px  
4px 4px #D09C8C; box-shadow:4px 4px 4px  
4px #D09C8C }
```

# Background

The CSS property to change the background color of an element to Decimal 13671564 is called "background". The background property can be set on classes, ids or directly on the HTML element.

```
.background, #background, body{  
background:#D09C8C }
```

If only the background color should be changed can be used:

```
.background{ background-color:#D09C8C }
```

This example shows the color as background, it is applied via the CSS property "background".

To optimize and compress your CSS code, you can use our [online CSS compressor and optimizer](#) based on csstidy. If you want to create a linear or radial gradient as background or border, check our [CSS Gradient Generator](#).



Hey! You found this booklet interesting? Support Converting Colors with the new Membership Option!

The pro membership hides all ads, plus gives you double the colors in the color bucket, and more awesome pro features!

**[Learn more, Memberships starting at \\$2.50/m!](#)**

**Follow me  
on Twitter!**

@ConvertingColor