

Converting Colors

Decimal(13671577)

Have a look what the booklet for
Decimal(13671577) contains.

Decimal(13671577)	3
<i>Conversions</i>	4
<i>Details</i>	6
<i>Harmonies</i>	11
<i>Previews</i>	23
<i>Color Blindness Simulation</i>	26
<i>CSS Examples</i>	29

Color

Decimal(13671577)

Conversions

Conversions Part 1

Format	Color
Hex	D09C99
RGB	208, 156, 153
RGB Percent	82%, 61%, 60%
CMY	0.1843, 0.3882, 0.4000
CMYK	0.00, 0.25, 0.26, 0.18
HSL	3°, 37%, 71%
HSV	3°, 26%, 82%
XYZ	43.6507, 39.4867, 35.4581
YIQ	171.2060, 31.9550, 10.0910

Conversions

Conversions Part 2

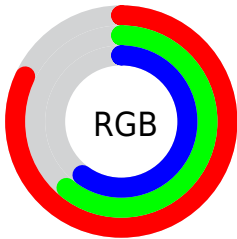
Format	Color
R _Y B	208, 156, 153
Decimal	13671577
CIE Lab	69.10, 18.94, 9.13
CIE LCh	69, 21.028, 25.732
Yxy	39.4867, 0.3681, 0.3330
Android (android.graphics.Color)	4291861657 (0xFFD09C99)
YUV	171.2060, -8.9756, 32.2683
Hunter-Lab	62.8385, 14.0275, 10.5312

Details

The Decimal color **13671577** is a light color, and the websafe version is hex **CC9999**. A complement of this color would be **10079696**, and the grayscale version is **11250603**.

A 20% lighter version of the original color is **16765903**, and **9988198** is the 20% darker color. If you saturate the color by 10%, you get **13666436**, and if you desaturate by 10%, it is **13676718**.

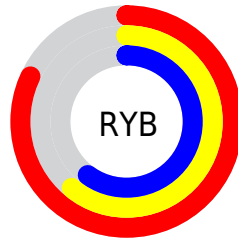
Distribution



Red (82%)

Green (61%)

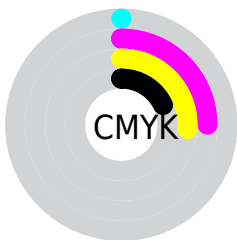
Blue (60%)



Red (82%)

Yellow (61%)

Blue (60%)

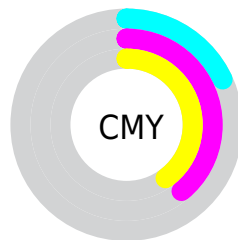


Cyan (0%)

Magenta (25%)

Yellow (26%)

Black (18%)



Cyan (18%)

Magenta (39%)

Yellow (40%)

Brightness & Saturation Gradients

These gradients show how the Decimal color 13671577 changes by changing the brightness by 10 percent. The first figure shows a shift by +10% for each color and the second figure -10%.

Similar to the brightness gradients but the following saturation gradients show a change of the Decimal color 13671577 by changing the saturation by 10% instead.

 13671577

 13671577

16777215

 11829887

 16765903

 9988198

 16773100

 8278094

 6568247

 4923938

 3345676

 1835009

 0

 13671577

 13671577

 13666436

 13676718

 13661551

 13681603

 13656411

 13686743

 13651270

 13691884

 13646385

 13696767

 13641244

 13697023

 13636103

 13634304

Harmonies

Analogous

The Analogous color harmony consists of three colors that are next to each other on the color wheel.



13474732



13671577



13213834

Triad

The Triadic color harmony groups three colors that are evenly spaced from another and form a triangle on the color wheel.



13671577



9482643



9415630

Complementary

The Complementary color scheme is a pair of colors which are on the opposite of each other on the color wheel.



13671577



10079696

Split Complementary

Split-complementary colors differ from the complementary color scheme. The scheme consists of three colors, the original color and two neighbors of the complement color.



8040647



13671577



8237989

Square

The Square scheme is like the rectangle color scheme, but the four colors are evenly spaced on the color wheel.



13671577



10923398



7648184



11052491

Rectangle

The Rectangle color scheme consists of four colors that form a rectangle on the color wheel.



13671577



12625028



7648184



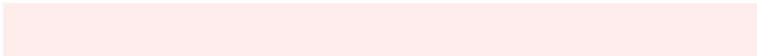
8891853

Sweetspot

The Sweet Spot groups the original color and five complimentary colors.



13671577



16772331



13670861



8418163



0



8421504

Same Dimension

The Same Dimension uses a secret algorithm to generate beautiful new colors.



13671577



16757421



13678489



6905694



11012352



2687488

Inverse Universe

The Inverse Universe completely reimagines the original color for something new.



10079696



11402239



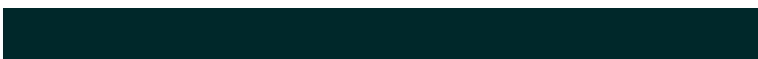
10072784



6187113



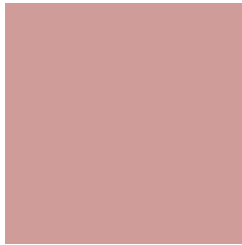
40872



10025

Previews

White Background



This preview shows how the Decimal color 13671577 looks on a white background.

Color Contrast Check

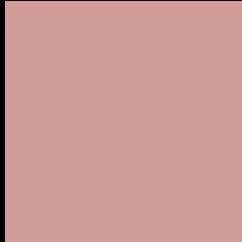
Large Text (above 18pt) WCAG AA × Fail

Any Text WCAG AA × Fail

Large Text (above 18pt) WCAG AAA × Fail

Any Text WCAG AAA × Fail

Black Background



This preview shows how the Decimal color 13671577 looks on a black background.

Color Contrast Check

Large Text (above 18pt) WCAG AA ✓ Pass

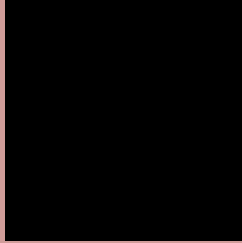
Any Text WCAG AA ✓ Pass

Large Text (above 18pt) WCAG AAA ✓ Pass

Any Text WCAG AAA ✓ Pass

If you want to check with other color combinations, try the [Color Contrast Checker](#).

Decimal 13671577 Background



This preview shows how black text looks on a background with the Decimal color 13671577.



This preview shows how white text looks on a background with the Decimal color 13671577.

Color Blindness Simulation

Color vision deficiency is a very complex topic, and I could not describe the different causes any better than Wikipedia does, so if you want to learn more, you should check out their [article about color blindness](#).


Dichromacy



Original Color
13671577

Protanopia
11446432

Deuteranopia
12624792



Tritanopia
13736614

Trichromacy



Original Color
13671577

Protanomaly
12231837

Deuteranomaly
13017240

Tritanomaly
13736865

Monochromacy



Original Color
13671577

Achromatopsia
11250603

Achromatomaly
12101284

CSS Examples

Text

The CSS property to change the color of the text to Decimal 13671577 is called "color". The color property can be set on classes, ids or directly on the HTML element.

This example shows how text in the color #D09C99 looks like.

```
.text, #text, p{  
    color:#D09C99  
}
```

If you want to add a text shadow in that color use the text-shadow property, you can generate a text shadow directly with our [CSS Text Shadow Generator](#).

Here you see how black text with a 4 pixel #D09C99 colored shadow looks like.

```
.shadow{ text-shadow: 4px 4px 2px #D09C99
}
```

Border

The CSS property to change the border of an element to Decimal 13671577 is called "border". The border property can be set on classes, ids or directly on the HTML element.

This example shows the color as border, it can be applied via the CSS property "border" or "border-color".

```
.border, #border, table{ border:4px solid
#D09C99 }
```

If only the border color should be changed use the property `border-color`.

```
.border{ border-color:#D09C99 }
```

If you want to add a box shadow in that color use:

Here you see how a box with a 4 pixel #D09C99 colored shadow looks like.

```
.boxshadow{ -moz-box-shadow:4px 4px 4px  
4px #D09C99; -webkit-box-shadow:4px 4px  
4px 4px #D09C99; box-shadow:4px 4px 4px  
4px #D09C99 }
```

Background

The CSS property to change the background color of an element to Decimal 13671577 is called "background". The background property can be set on classes, ids or directly on the HTML element.

```
.background, #background, body{  
background:#D09C99 }
```

If only the background color should be changed can be used:

```
.background{ background-color:#D09C99 }
```

This example shows the color as background, it is applied via the CSS property "background".

To optimize and compress your CSS code, you can use our [online CSS compressor and optimizer](#) based on csstidy. If you want to create a linear or radial gradient as background or border, check our [CSS Gradient Generator](#).

Hey! You found this booklet interesting? Support Converting Colors with the new Membership Option!

The pro membership hides all ads, plus gives you double the colors in the color bucket, and more awesome pro features!

[Learn more, Memberships starting at \\$2.50/m!](#)

**Follow me
on Twitter!**

@ConvertingColor