

Converting Colors

Decimal(13672364)

Have a look what the booklet for
Decimal(13672364) contains.

Decimal(13672364)	3
<i>Conversions</i>	4
<i>Details</i>	6
<i>Harmonies</i>	11
<i>Previews</i>	23
<i>Color Blindness Simulation</i>	26
<i>CSS Examples</i>	29

Color

Decimal(13672364)

Conversions

Conversions Part 1

Format	Color
Hex	D09FAC
RGB	208, 159, 172
RGB Percent	82%, 62%, 67%
CMY	0.1843, 0.3765, 0.3255
CMYK	0.00, 0.24, 0.17, 0.18
HSL	344°, 34%, 72%
HSV	344°, 24%, 82%
XYZ	45.8570, 41.1847, 44.5622
YIQ	175.1330, 25.0310, 14.4310

Conversions

Conversions Part 2

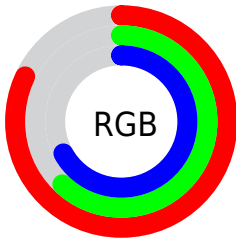
Format	Color
R_{YB}	208, 159, 172
Decimal	13672364
CIE _{Lab}	70.31, 20.15, 0.31
CIE _{LCh}	70, 20.154, 0.885
Yxy	41.1847, 0.3484, 0.3129
Android (android.graphics.Color)	4291862444 (0xFFD09FAC)
YUV	175.1330, -1.5446, 28.8244
Hunter-Lab	64.1753, 15.2417, 3.7528

Details

The Decimal color **13672364** is a light color, and the websafe version is hex **CC9999**. A complement of this color would be **10473667**, and the grayscale version is **11513775**.

A 20% lighter version of the original color is **16766691**, and **10054520** is the 20% darker color. If you saturate the color by 10%, you get **13666973**, and if you desaturate by 10%, it is **13677755**.

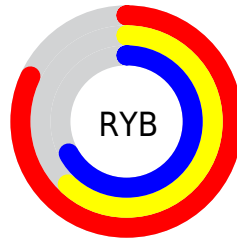
Distribution



Red (82%)

Green (62%)

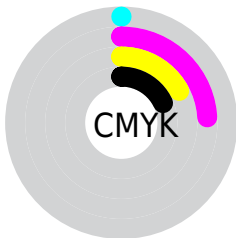
Blue (67%)



Red (82%)

Yellow (62%)

Blue (67%)

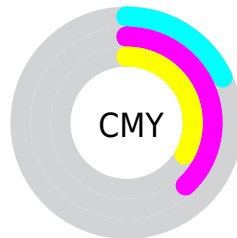


Cyan (0%)

Magenta (24%)

Yellow (17%)

Black (18%)



Cyan (18%)

Magenta (38%)

Yellow (33%)

Brightness & Saturation Gradients

These gradients show how the Decimal color 13672364 changes by changing the brightness by 10 percent. The first figure shows a shift by +10% for each color and the second figure -10%.

Similar to the brightness gradients but the following saturation gradients show a change of the Decimal color 13672364 by changing the saturation by 10% instead.

 13672364

 13672364

16777215

 11830673

 16766691

 10054520

 16773887

 8278879

 6634311

 4990257

 3411740

 2228225

 0

 13672364

 13672364

 13666973

 13677755

 13661581

 13683147

 13656446

 13688282

 13651055

 13693673

 13645664

 13697016

 13640272

 13697023

 13634881

 13631543

Harmonies

Analogous

The Analogous color harmony consists of three colors that are next to each other on the color wheel.



12886718



13672364



13738138

Triad

The Triadic color harmony groups three colors that are evenly spaced from another and form a triangle on the color wheel.



13672364



10858636



8565707

Complementary

The Complementary color scheme is a pair of colors which are on the opposite of each other on the color wheel.



13672364



10473667

Split Complementary

Split-complementary colors differ from the complementary color scheme. The scheme consists of three colors, the original color and two neighbors of the complement color.



8042174



13672364



9549210

Square

The Square scheme is like the rectangle color scheme, but the four colors are evenly spaced on the color wheel.



13672364



12168071



8435372



9940432

Rectangle

The Rectangle color scheme consists of four colors that form a rectangle on the color wheel.



13672364



13476752



8435372



8303816

Sweetspot

The Sweet Spot groups the original color and five complimentary colors.



13672364



16772594



12820432



8418680



0



8421504

Same Dimension

The Same Dimension uses a secret algorithm to generate beautiful new colors.



13672364



16758987



13675167



6905441



11010093



2686987

Inverse Universe

The Inverse Universe completely reimagines the original color for something new.



13672364



16758987



10470864



6905441



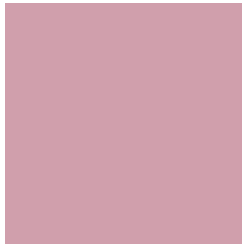
11010093



2686987

Previews

White Background



This preview shows how the Decimal color 13672364 looks on a white background.

Color Contrast Check

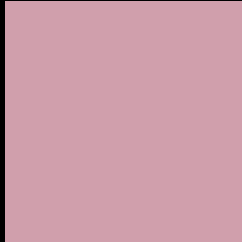
Large Text (above 18pt) WCAG AA × Fail

Any Text WCAG AA × Fail

Large Text (above 18pt) WCAG AAA × Fail

Any Text WCAG AAA × Fail

Black Background



This preview shows how the Decimal color 13672364 looks on a black background.

Color Contrast Check

Large Text (above 18pt) WCAG AA ✓ Pass

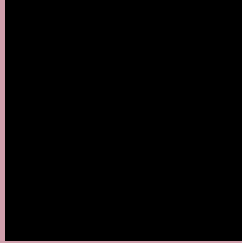
Any Text WCAG AA ✓ Pass

Large Text (above 18pt) WCAG AAA ✓ Pass

Any Text WCAG AAA ✓ Pass

If you want to check with other color combinations, try the [Color Contrast Checker](#).

Decimal 13672364 Background



This preview shows how black text looks on a background with the Decimal color 13672364.

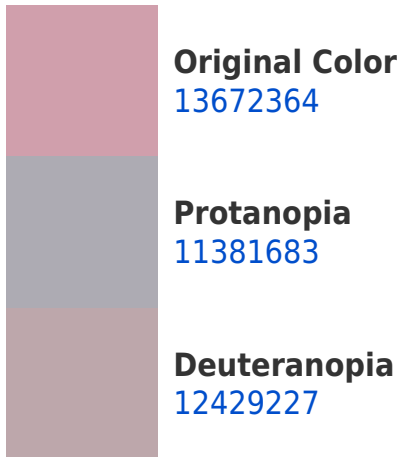



This preview shows how white text looks on a background with the Decimal color 13672364.

Color Blindness Simulation

Color vision deficiency is a very complex topic, and I could not describe the different causes any better than Wikipedia does, so if you want to learn more, you should check out their [article about color blindness](#).

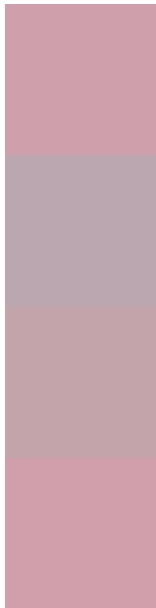
Dichromacy





Tritanopia
13672363

Trichromacy



Original Color
13672364

Protanomaly
12232624

Deuteranomaly
12887211

Tritanomaly
13672363

Monochromacy



Original Color
13672364

Achromatopsia
11513775

Achromatomaly
12298670

CSS Examples

Text

The CSS property to change the color of the text to Decimal 13672364 is called "color". The color property can be set on classes, ids or directly on the HTML element.

This example shows how text in the color #D09FAC looks like.

```
.text, #text, p{  
    color:#D09FAC  
}
```

If you want to add a text shadow in that color use the text-shadow property, you can generate a text shadow directly with our [CSS Text Shadow Generator](#).

Here you see how black text with a 4 pixel #D09FAC colored shadow looks like.

```
.shadow{ text-shadow: 4px 4px 2px #D09FAC
}
```

Border

The CSS property to change the border of an element to Decimal 13672364 is called "border". The border property can be set on classes, ids or directly on the HTML element.

This example shows the color as border, it can be applied via the CSS property "border" or "border-color".

```
.border, #border, table{ border:4px solid
#D09FAC }
```

If only the border color should be changed use the property `border-color`.

```
.border{ border-color:#D09FAC }
```

If you want to add a box shadow in that color use:

Here you see how a box with a 4 pixel #D09FAC colored shadow looks like.

```
.boxshadow{ -moz-box-shadow:4px 4px 4px  
4px #D09FAC; -webkit-box-shadow:4px 4px  
4px 4px #D09FAC; box-shadow:4px 4px 4px  
4px #D09FAC }
```

Background

The CSS property to change the background color of an element to Decimal 13672364 is called "background". The background property can be set on classes, ids or directly on the HTML element.

```
.background, #background, body{  
background:#D09FAC }
```

If only the background color should be changed can be used:

```
.background{ background-color:#D09FAC }
```

This example shows the color as background, it is applied via the CSS property "background".

To optimize and compress your CSS code, you can use our [online CSS compressor and optimizer](#) based on csstidy. If you want to create a linear or radial gradient as background or border, check our [CSS Gradient Generator](#).

Hey! You found this booklet interesting? Support Converting Colors with the new Membership Option!

The pro membership hides all ads, plus gives you double the colors in the color bucket, and more awesome pro features!

[Learn more, Memberships starting at \\$2.50/m!](#)

**Follow me
on Twitter!**

@ConvertingColor