

Converting Colors

Decimal(13672854)

Have a look what the booklet for
Decimal(13672854) contains.

Decimal(13672854)	3
<i>Conversions</i>	4
<i>Details</i>	6
<i>Harmonies</i>	11
<i>Previews</i>	23
<i>Color Blindness Simulation</i>	26
<i>CSS Examples</i>	29

Color

Decimal(13672854)

Conversions

Conversions Part 1

Format	Color
Hex	D0A196
RGB	208, 161, 150
RGB Percent	82%, 63%, 59%
CMY	0.1843, 0.3686, 0.4118
CMYK	0.00, 0.23, 0.28, 0.18
HSL	11°, 38%, 70%
HSV	11°, 28%, 82%
XYZ	44.2623, 41.1016, 34.4547
YIQ	173.7990, 31.5430, 6.5430

Conversions

Conversions Part 2

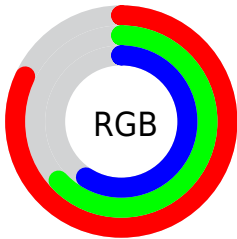
Format	Color
R _Y B	208, 164, 150
Decimal	13672854
CIE Lab	70.25, 15.80, 12.41
CIE LCh	70, 20.095, 38.151
Yxy	41.1016, 0.3694, 0.3430
Android (android.graphics.Color)	4291862934 (0xFFD0A196)
YUV	173.7990, -11.7329, 29.9943
Hunter-Lab	64.1106, 11.0440, 13.0134

Details

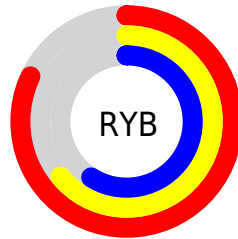
The Decimal color **13672854** is a light color, and the websafe version is hex **CC9999**. A complement of this color would be **9881040**, and the grayscale version is **11447982**.

A 20% lighter version of the original color is **16767180**, and **10055011** is the 20% darker color. If you saturate the color by 10%, you get **13668481**, and if you desaturate by 10%, it is **13677227**.

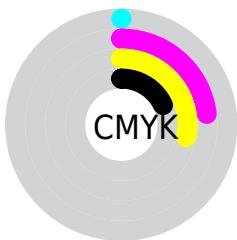
Distribution



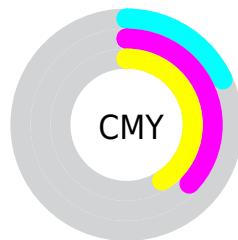
- Red (82%)
- Green (63%)
- Blue (59%)



- Red (82%)
- Yellow (64%)
- Blue (59%)



- Cyan (0%)
- Magenta (23%)
- Yellow (28%)
- Black (18%)



- Cyan (18%)
- Magenta (37%)
- Yellow (41%)

Brightness & Saturation Gradients

These gradients show how the Decimal color 13672854 changes by changing the brightness by 10 percent. The first figure shows a shift by +10% for each color and the second figure -10%.

Similar to the brightness gradients but the following saturation gradients show a change of the Decimal color 13672854 by changing the saturation by 10% instead.

 13672854

 13672854

16777215

 11831164

 16767180

 10055011

 16774376

 8279371

 6569269

 4925215

 3346952

 1966081

 0

 13672854

 13672854

 13668481

 13677227

 13664108

 13681600

 13659736

 13685972

 13655619

 13690089

 13651246

 13694462

 13646873

 13697023

 13642500

 13641472

Harmonies

Analogous

The Analogous color harmony consists of three colors that are next to each other on the color wheel.



13737895



13672854



13018762

Triad

The Triadic color harmony groups three colors that are evenly spaced from another and form a triangle on the color wheel.



13672854



9221534



1033392

Complementary

The Complementary color scheme is a pair of colors which are on the opposite of each other on the color wheel.



13672854



9881040

Split Complementary

Split-complementary colors differ from the complementary color scheme. The scheme consists of three colors, the original color and two neighbors of the complement color.



8892877



13672854



8238768

Square

The Square scheme is like the rectangle color scheme, but the four colors are evenly spaced on the color wheel.



13672854



10531215



8041922



11904456

Rectangle

The Rectangle color scheme consists of four colors that form a rectangle on the color wheel.



13672854



12298887



8041922



9809616

Sweetspot

The Sweet Spot groups the original color and five complimentary colors.



13672854



16772843



13670085



8418675



0



8421504

Same Dimension

The Same Dimension uses a secret algorithm to generate beautiful new colors.



13672854



16759723



13680278



6905950



11018240



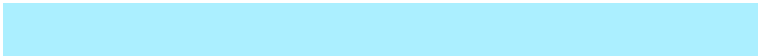
2689024

Inverse Universe

The Inverse Universe completely reimagines the original color for something new.



9881040



11268095



9873616



6186857



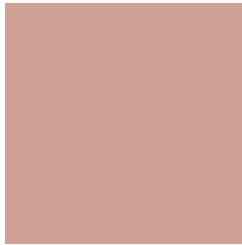
34984



8489

Previews

White Background



This preview shows how the Decimal color 13672854 looks on a white background.

Color Contrast Check

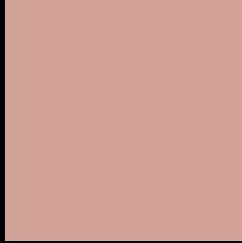
Large Text (above 18pt) WCAG AA × Fail

Any Text WCAG AA × Fail

Large Text (above 18pt) WCAG AAA × Fail

Any Text WCAG AAA × Fail

Black Background



This preview shows how the Decimal color 13672854 looks on a black background.

Color Contrast Check

Large Text (above 18pt) WCAG AA ✓ Pass

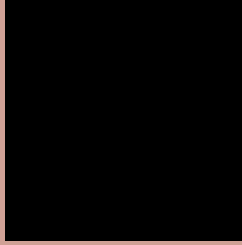
Any Text WCAG AA ✓ Pass

Large Text (above 18pt) WCAG AAA ✓ Pass

Any Text WCAG AAA ✓ Pass

If you want to check with other color combinations, try the [Color Contrast Checker](#).

Decimal 13672854 Background



This preview shows how black text looks on a background with the Decimal color 13672854.



This preview shows how white text looks on a background with the Decimal color 13672854.

Color Blindness Simulation

Color vision deficiency is a very complex topic, and I could not describe the different causes any better than Wikipedia does, so if you want to learn more, you should check out their [article about color blindness](#).

Dichromacy



Original Color
13672854

Protanopia
11774875

Deuteranopia
12953237



Tritanopia
13803178

Trichromacy



Original Color
13672854

Protanomaly
12494745

Deuteranomaly
13214869

Tritanomaly
13737891

Monochromacy



Original Color
13672854

Achromatopsia
11447982

Achromatomaly
12233125

CSS Examples

Text

The CSS property to change the color of the text to Decimal 13672854 is called "color". The color property can be set on classes, ids or directly on the HTML element.

This example shows how text in the color #D0A196 looks like.

```
.text, #text, p{  
    color:#D0A196  
}
```

If you want to add a text shadow in that color use the text-shadow property, you can generate a text shadow directly with our [CSS Text Shadow Generator](#).

Here you see how black text with a 4 pixel #D0A196 colored shadow looks like.

```
.shadow{ text-shadow: 4px 4px 2px #D0A196
}
```

Border

The CSS property to change the border of an element to Decimal 13672854 is called "border". The border property can be set on classes, ids or directly on the HTML element.

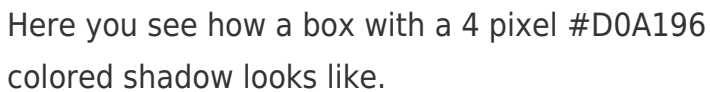
This example shows the color as border, it can be applied via the CSS property "border" or "border-color".

```
.border, #border, table{ border:4px solid
#D0A196 }
```

If only the border color should be changed use the property `border-color`.

```
.border{ border-color:#D0A196 }
```

If you want to add a box shadow in that color use:



Here you see how a box with a 4 pixel #D0A196 colored shadow looks like.

```
.boxshadow{ -moz-box-shadow:4px 4px 4px  
4px #D0A196; -webkit-box-shadow:4px 4px  
4px 4px #D0A196; box-shadow:4px 4px 4px  
4px #D0A196 }
```

Background

The CSS property to change the background color of an element to Decimal 13672854 is called "background". The background property can be set on classes, ids or directly on the HTML element.

```
.background, #background, body{  
background:#D0A196 }
```

If only the background color should be changed can be used:

```
.background{ background-color:#D0A196 }
```

This example shows the color as background, it is applied via the CSS property "background".

To optimize and compress your CSS code, you can use our [online CSS compressor and optimizer](#) based on csstidy. If you want to create a linear or radial gradient as background or border, check our [CSS Gradient Generator](#).

Hey! You found this booklet interesting? Support Converting Colors with the new Membership Option!

The pro membership hides all ads, plus gives you double the colors in the color bucket, and more awesome pro features!

[Learn more, Memberships starting at \\$2.50/m!](#)

**Follow me
on Twitter!**

@ConvertingColor