

# Converting Colors

Decimal(13674137)

Have a look what the booklet for  
Decimal(13674137) contains.

<b>Decimal(13674137)</b> .....	3
<i><b>Conversions</b></i> .....	4
<i><b>Details</b></i> .....	6
<i><b>Harmonies</b></i> .....	11
<i><b>Previews</b></i> .....	23
<i><b>Color Blindness Simulation</b></i> .....	26
<i><b>CSS Examples</b></i> .....	29

# **Color**

**Decimal(13674137)**

# Conversions

## Conversions Part 1

Format	Color
Hex	D0A699
RGB	208, 166, 153
RGB Percent	82%, 65%, 60%
CMY	0.1843, 0.3490, 0.4000
CMYK	0.00, 0.20, 0.26, 0.18
HSL	14°, 37%, 71%
HSV	14°, 26%, 82%
XYZ	45.3984, 42.9822, 36.0406
YIQ	177.0760, 29.2050, 4.8610

# Conversions

## Conversions Part 2

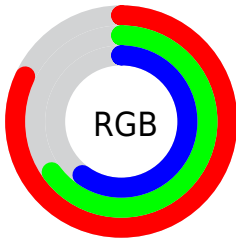
<b>Format</b>	<b>Color</b>
<b>R<sub>YB</sub></b>	208, 170, 153
Decimal	13674137
CIE <sub>Lab</sub>	71.54, 13.50, 12.59
CIE <sub>LCh</sub>	72, 18.461, 42.988
Yxy	42.9822, 0.3649, 0.3455
Android (android.graphics.Color)	4291864217 (0xFFD0A699)
YUV	177.0760, -11.8695, 27.1203
Hunter-Lab	65.5608, 8.8730, 13.2992

# Details

The Decimal color **13674137** is a light color, and the websafe version is hex **CC9999**. A complement of this color would be **10077136**, and the grayscale version is **11645361**.

A 20% lighter version of the original color is **16768463**, and **10056294** is the 20% darker color. If you saturate the color by 10%, you get **13670020**, and if you desaturate by 10%, it is **13678254**.

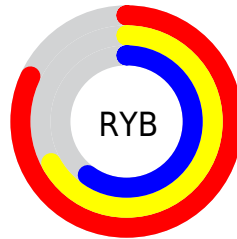
# Distribution



Red (82%)

Green (65%)

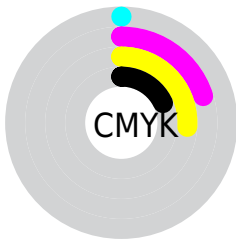
Blue (60%)



Red (82%)

Yellow (67%)

Blue (60%)

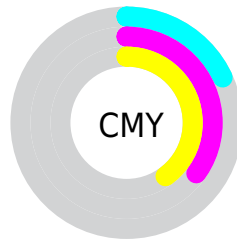


Cyan (0%)

Magenta (20%)

Yellow (26%)

Black (18%)



Cyan (18%)

Magenta (35%)

Yellow (40%)

# Brightness & Saturation Gradients

These gradients show how the Decimal color 13674137 changes by changing the brightness by 10 percent. The first figure shows a shift by +10% for each color and the second figure -10%.

Similar to the brightness gradients but the following saturation gradients show a change of the Decimal color 13674137 by changing the saturation by 10% instead.



 13674137

 13674137

16777215

 11832447

 16768463

 10056294

 16775916

 8280398

 6570551

 4926498

 3413516

 1966080

 0

 13674137

 13674137

 13670020

 13678254

 13665903

 13682371

 13661787

 13686487

 13657670

 13690604

 13653809

 13694463

 13649692

 13697023

 13645575

 13644032

# Harmonies

## Analogous

The Analogous color harmony consists of three colors that are next to each other on the color wheel.



13804712



13674137



12954511

# Triad

The Triadic color harmony groups three colors that are evenly spaced from another and form a triangle on the color wheel.



13674137



9418917



10923728

# Complementary

The Complementary color scheme is a pair of colors which are on the opposite of each other on the color wheel.



13674137



10077136

# Split Complementary

Split-complementary colors differ from the complementary color scheme. The scheme consists of three colors, the original color and two neighbors of the complement color.



9549007



13674137



8698294

# Square

The Square scheme is like the rectangle color scheme, but the four colors are evenly spaced on the color wheel.



13674137



10663318



8697798



12298696

# Rectangle

The Rectangle color scheme consists of four colors that form a rectangle on the color wheel.



13674137



12300174



8697798



10399953

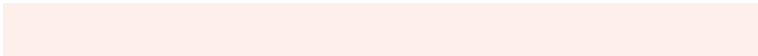


# Sweetspot

The Sweet Spot groups the original color and five complimentary colors.



13674137



16773099



13670851



8418931



0



8421504



# Same Dimension

The Same Dimension uses a secret algorithm to generate beautiful new colors.



13674137



16761261



13681049



6906206



11020288



2689536

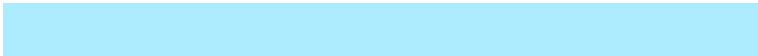


# Inverse Universe

The Inverse Universe completely reimagines the original color for something new.



10077136



11398399



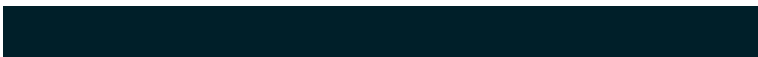
10070224



6186601



33192



7977



# Previews

## White Background



This preview shows how the Decimal color 13674137 looks on a white background.

## Color Contrast Check

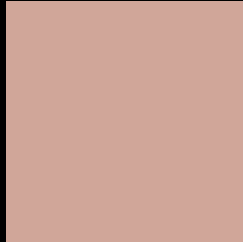
Large Text (above 18pt) WCAG AA × Fail

Any Text WCAG AA × Fail

Large Text (above 18pt) WCAG AAA × Fail

Any Text WCAG AAA × Fail

# Black Background



This preview shows how the Decimal color 13674137 looks on a black background.

## Color Contrast Check

Large Text (above 18pt) WCAG AA ✓ Pass

Any Text WCAG AA ✓ Pass

Large Text (above 18pt) WCAG AAA ✓ Pass

Any Text WCAG AAA ✓ Pass

If you want to check with other color combinations, try the [Color Contrast Checker](#).



## Decimal 13674137 Background



This preview shows how black text looks on a background with the Decimal color 13674137.




This preview shows how white text looks on a background with the Decimal color 13674137.

# Color Blindness Simulation

Color vision deficiency is a very complex topic, and I could not describe the different causes any better than Wikipedia does, so if you want to learn more, you should check out their [article about color blindness](#).

## Dichromacy





**Tritanopia**  
13869999

# Trichromacy



**Original Color**  
13674137

**Protanomaly**  
12627100

**Deuteranomaly**  
13412504

**Tritanomaly**  
13804711

# Monochromacy



**Original Color**  
13674137

**Achromatopsia**  
11645361

**Achromatomaly**  
12365224

# CSS Examples

## Text

The CSS property to change the color of the text to Decimal 13674137 is called "color". The color property can be set on classes, ids or directly on the HTML element.

This example shows how text in the color #D0A699 looks like.

```
.text, #text, p{  
    color:#D0A699  
}
```

If you want to add a text shadow in that color use the text-shadow property, you can generate a text shadow directly with our [CSS Text Shadow Generator](#).

Here you see how black text with a 4 pixel #D0A699 colored shadow looks like.

```
.shadow{ text-shadow: 4px 4px 2px #D0A699
}
```

## Border

The CSS property to change the border of an element to Decimal 13674137 is called "border". The border property can be set on classes, ids or directly on the HTML element.

This example shows the color as border, it can be applied via the CSS property "border" or "border-color".

```
.border, #border, table{ border:4px solid
#D0A699 }
```

If only the border color should be changed use the property `border-color`.

```
.border{ border-color:#D0A699 }
```

If you want to add a box shadow in that color use:

Here you see how a box with a 4 pixel #D0A699 colored shadow looks like.

```
.boxshadow{ -moz-box-shadow:4px 4px 4px  
4px #D0A699; -webkit-box-shadow:4px 4px  
4px 4px #D0A699; box-shadow:4px 4px 4px  
4px #D0A699 }
```

# Background

The CSS property to change the background color of an element to Decimal 13674137 is called "background". The background property can be set on classes, ids or directly on the HTML element.

```
.background, #background, body{  
background:#D0A699 }
```

If only the background color should be changed can be used:

```
.background{ background-color:#D0A699 }
```

This example shows the color as background, it is applied via the CSS property "background".

To optimize and compress your CSS code, you can use our [online CSS compressor and optimizer](#) based on csstidy. If you want to create a linear or radial gradient as background or border, check our [CSS Gradient Generator](#).



Hey! You found this booklet interesting? Support Converting Colors with the new Membership Option!

The pro membership hides all ads, plus gives you double the colors in the color bucket, and more awesome pro features!

**[Learn more, Memberships starting at \\$2.50/m!](#)**

**Follow me  
on Twitter!**

@ConvertingColor