

Converting Colors

Decimal(13674394)

Have a look what the booklet for
Decimal(13674394) contains.

Decimal(13674394)	3
<i>Conversions</i>	4
<i>Details</i>	6
<i>Harmonies</i>	11
<i>Previews</i>	23
<i>Color Blindness Simulation</i>	26
<i>CSS Examples</i>	29

Color

Decimal(13674394)

Conversions

Conversions Part 1

Format	Color
Hex	D0A79A
RGB	208, 167, 154
RGB Percent	82%, 65%, 60%
CMY	0.1843, 0.3451, 0.3961
CMYK	0.00, 0.20, 0.26, 0.18
HSL	14°, 36%, 71%
HSV	14°, 26%, 82%
XYZ	45.6639, 43.3804, 36.5384
YIQ	177.7770, 28.6090, 4.6490

Conversions

Conversions Part 2

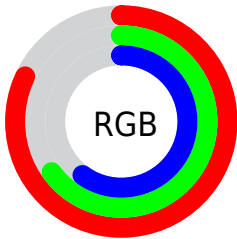
Format	Color
R _Y B	208, 171, 154
Decimal	13674394
CIE Lab	71.81, 13.10, 12.42
CIE LCh	72, 18.053, 43.463
Yxy	43.3804, 0.3636, 0.3454
Android (android.graphics.Color)	4291864474 (0xFFD0A79A)
YUV	177.7770, -11.7221, 26.5056
Hunter-Lab	65.8638, 8.4937, 13.2132

Details

The Decimal color **13674394** is a light color, and the websafe version is hex **CC9999**. A complement of this color would be **10142672**, and the grayscale version is **11711154**.

A 20% lighter version of the original color is **16768720**, and **10056551** is the 20% darker color. If you saturate the color by 10%, you get **13670277**, and if you desaturate by 10%, it is **13678511**.

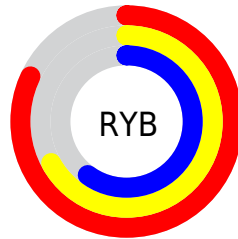
Distribution



Red (82%)

Green (65%)

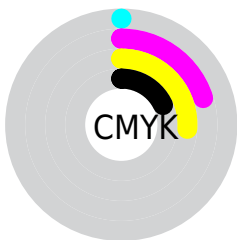
Blue (60%)



Red (82%)

Yellow (67%)

Blue (60%)

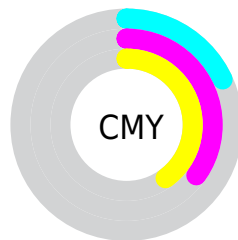


Cyan (0%)

Magenta (20%)

Yellow (26%)

Black (18%)



Cyan (18%)

Magenta (35%)

Yellow (40%)

Brightness & Saturation Gradients

These gradients show how the Decimal color 13674394 changes by changing the brightness by 10 percent. The first figure shows a shift by +10% for each color and the second figure -10%.

Similar to the brightness gradients but the following saturation gradients show a change of the Decimal color 13674394 by changing the saturation by 10% instead.

 13674394

 13674394

16777215

 11832704

 16768720

 10056551

 16776173

 8280655

 6570808

 4992034

 3413773

 2031616

 0

 13674394

 13674394

 13670277

 13678511

 13666160

 13682628

 13662300

 13686488

 13658183

 13690605

 13654066

 13694719

 13649949

 13697023

 13645832

 13644288

Harmonies

Analogous

The Analogous color harmony consists of three colors that are next to each other on the color wheel.



13804969



13674394



12954769

Triad

The Triadic color harmony groups three colors that are evenly spaced from another and form a triangle on the color wheel.



13674394



9550246



10989520

Complementary

The Complementary color scheme is a pair of colors which are on the opposite of each other on the color wheel.



13674394



10142672

Split Complementary

Split-complementary colors differ from the complementary color scheme. The scheme consists of three colors, the original color and two neighbors of the complement color.



9680079



13674394



8764087

Square

The Square scheme is like the rectangle color scheme, but the four colors are evenly spaced on the color wheel.



13674394



10663576



8829126



12364232

Rectangle

The Rectangle color scheme consists of four colors that form a rectangle on the color wheel.



13674394



12300175



8829126



10531281

Sweetspot

The Sweet Spot groups the original color and five complimentary colors.



13674394



16773355



13671107



8418931



0



8421504

Same Dimension

The Same Dimension uses a secret algorithm to generate beautiful new colors.



13674394



16761776



13681306



6906206



11020544



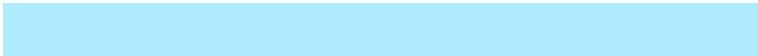
2689536

Inverse Universe

The Inverse Universe completely reimagines the original color for something new.



10142672



11595007



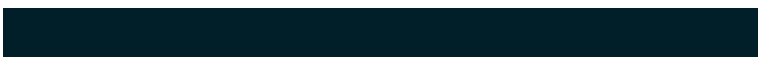
10135760



6186601



32936



7977

Previews

White Background



This preview shows how the Decimal color 13674394 looks on a white background.

Color Contrast Check

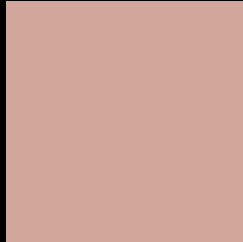
Large Text (above 18pt) WCAG AA × Fail

Any Text WCAG AA × Fail

Large Text (above 18pt) WCAG AAA × Fail

Any Text WCAG AAA × Fail

Black Background



This preview shows how the Decimal color 13674394 looks on a black background.

Color Contrast Check

Large Text (above 18pt) WCAG AA ✓ Pass

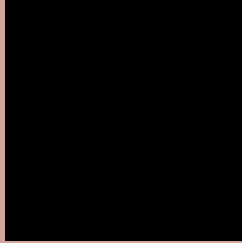
Any Text WCAG AA ✓ Pass

Large Text (above 18pt) WCAG AAA ✓ Pass

Any Text WCAG AAA ✓ Pass

If you want to check with other color combinations, try the [Color Contrast Checker](#).

Decimal 13674394 Background



This preview shows how black text looks on a background with the Decimal color 13674394.



This preview shows how white text looks on a background with the Decimal color 13674394.

Color Blindness Simulation

Color vision deficiency is a very complex topic, and I could not describe the different causes any better than Wikipedia does, so if you want to learn more, you should check out their [article about color blindness](#).

Dichromacy



Original Color
13674394

Protanopia
12103838

Deuteranopia
13216409



Tritanopia
13870256

Trichromacy



Original Color
13674394

Protanomaly
12692893

Deuteranomaly
13412761

Tritanomaly
13804968

Monochromacy



Original Color
13674394

Achromatopsia
11711154

Achromatomaly
12431017

CSS Examples

Text

The CSS property to change the color of the text to Decimal 13674394 is called "color". The color property can be set on classes, ids or directly on the HTML element.

This example shows how text in the color #D0A79A looks like.

```
.text, #text, p{  
    color:#D0A79A  
}
```

If you want to add a text shadow in that color use the text-shadow property, you can generate a text shadow directly with our [CSS Text Shadow Generator](#).

Here you see how black text with a 4 pixel #D0A79A colored shadow looks like.

```
.shadow{ text-shadow: 4px 4px 2px #D0A79A
}
```

Border

The CSS property to change the border of an element to Decimal 13674394 is called "border". The border property can be set on classes, ids or directly on the HTML element.

This example shows the color as border, it can be applied via the CSS property "border" or "border-color".

```
.border, #border, table{ border:4px solid
#D0A79A }
```

If only the border color should be changed use the property `border-color`.

```
.border{ border-color:#D0A79A }
```

If you want to add a box shadow in that color use:

Here you see how a box with a 4 pixel #D0A79A colored shadow looks like.

```
.boxshadow{ -moz-box-shadow:4px 4px 4px  
4px #D0A79A; -webkit-box-shadow:4px 4px  
4px 4px #D0A79A; box-shadow:4px 4px 4px  
4px #D0A79A }
```

Background

The CSS property to change the background color of an element to Decimal 13674394 is called "background". The background property can be set on classes, ids or directly on the HTML element.

```
.background, #background, body{  
background:#D0A79A }
```

If only the background color should be changed can be used:

```
.background{ background-color:#D0A79A }
```

This example shows the color as background, it is applied via the CSS property "background".

To optimize and compress your CSS code, you can use our [online CSS compressor and optimizer](#) based on csstidy. If you want to create a linear or radial gradient as background or border, check our [CSS Gradient Generator](#).

Hey! You found this booklet interesting? Support Converting Colors with the new Membership Option!

The pro membership hides all ads, plus gives you double the colors in the color bucket, and more awesome pro features!

[Learn more, Memberships starting at \\$2.50/m!](#)

**Follow me
on Twitter!**

@ConvertingColor