

Converting Colors

Decimal(13675160)

Have a look what the booklet for
Decimal(13675160) contains.

Decimal(13675160)	3
<i>Conversions</i>	4
<i>Details</i>	6
<i>Harmonies</i>	11
<i>Previews</i>	23
<i>Color Blindness Simulation</i>	26
<i>CSS Examples</i>	29

Color

Decimal(13675160)

Conversions

Conversions Part 1

Format	Color
Hex	D0AA98
RGB	208, 170, 152
RGB Percent	82%, 67%, 60%
CMY	0.1843, 0.3333, 0.4039
CMYK	0.00, 0.18, 0.27, 0.18
HSL	19°, 37%, 71%
HSV	19°, 27%, 82%
XYZ	46.0546, 44.4263, 35.8536
YIQ	179.3100, 28.4260, 2.4580

Conversions

Conversions Part 2

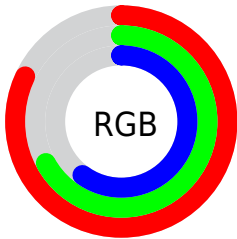
Format	Color
R _Y B	208, 179, 152
Decimal	13675160
CIE Lab	72.51, 11.20, 14.50
CIE LCh	73, 18.321, 52.318
Yxy	44.4263, 0.3645, 0.3517
Android (android.graphics.Color)	4291865240 (0xFFD0AA98)
YUV	179.3100, -13.4638, 25.1611
Hunter-Lab	66.6531, 6.6935, 14.7643

Details

The Decimal color **13675160** is a light color, and the websafe version is hex **CC9999**. A complement of this color would be **10010320**, and the grayscale version is **11776947**.

A 20% lighter version of the original color is **16769486**, and **10057317** is the 20% darker color. If you saturate the color by 10%, you get **13671555**, and if you desaturate by 10%, it is **13678765**.

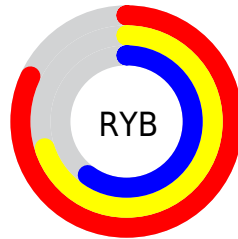
Distribution



Red (82%)

Green (67%)

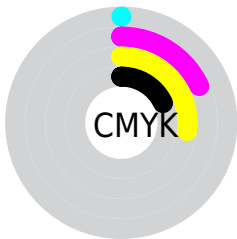
Blue (60%)



Red (82%)

Yellow (70%)

Blue (60%)

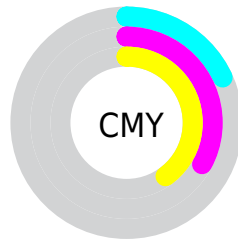


Cyan (0%)

Magenta (18%)

Yellow (27%)

Black (18%)



Cyan (18%)

Magenta (33%)

Yellow (40%)

Brightness & Saturation Gradients

These gradients show how the Decimal color 13675160 changes by changing the brightness by 10 percent. The first figure shows a shift by +10% for each color and the second figure -10%.

Similar to the brightness gradients but the following saturation gradients show a change of the Decimal color 13675160 by changing the saturation by 10% instead.

 13675160

 13675160

16777215

 11833214

 16769486

 10057317

 16776939

 8281421

 6571318

 4992801

 3414539

 1966080

 0

 13675160

 13675160

 13671555

 13678765

 13667950

 13682370

 13664346

 13685974

 13660741

 13689579

 13656880

 13693439

 13653275

 13697023

 13649670

 13648640

Harmonies

Analogous

The Analogous color harmony consists of three colors that are next to each other on the color wheel.



14002086



13675160



12824465

Triad

The Triadic color harmony groups three colors that are evenly spaced from another and form a triangle on the color wheel.



13675160



9354157



11513809

Complementary

The Complementary color scheme is a pair of colors which are on the opposite of each other on the color wheel.



13675160



10010320

Split Complementary

Split-complementary colors differ from the complementary color scheme. The scheme consists of three colors, the original color and two neighbors of the complement color.



10139091



13675160



8764350

Square

The Square scheme is like the rectangle color scheme, but the four colors are evenly spaced on the color wheel.



13675160



10402205



9025996



12888775

Rectangle

The Rectangle color scheme consists of four colors that form a rectangle on the color wheel.



13675160



12104593



9025996



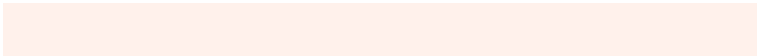
11055570

Sweetspot

The Sweet Spot groups the original color and five complimentary colors.



13675160



16773611



13670590



8419187



0



8421504

Same Dimension

The Same Dimension uses a secret algorithm to generate beautiful new colors.



13675160



16763053



13682328



6906206



11023872



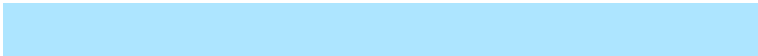
2690304

Inverse Universe

The Inverse Universe completely reimagines the original color for something new.



10010320



11396607



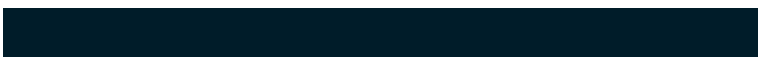
10003152



6186345



29352



7209

Previews

White Background



This preview shows how the Decimal color 13675160 looks on a white background.

Color Contrast Check

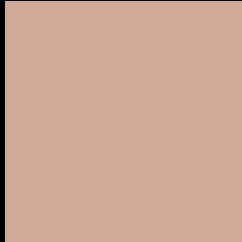
Large Text (above 18pt) WCAG AA × Fail

Any Text WCAG AA × Fail

Large Text (above 18pt) WCAG AAA × Fail

Any Text WCAG AAA × Fail

Black Background



This preview shows how the Decimal color 13675160 looks on a black background.

Color Contrast Check

Large Text (above 18pt) WCAG AA ✓ Pass

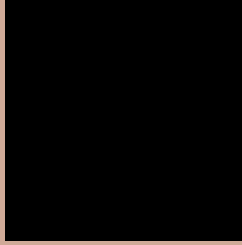
Any Text WCAG AA ✓ Pass

Large Text (above 18pt) WCAG AAA ✓ Pass

Any Text WCAG AAA ✓ Pass

If you want to check with other color combinations, try the [Color Contrast Checker](#).

Decimal 13675160 Background



This preview shows how black text looks on a background with the Decimal color 13675160.



This preview shows how white text looks on a background with the Decimal color 13675160.

Color Blindness Simulation

Color vision deficiency is a very complex topic, and I could not describe the different causes any better than Wikipedia does, so if you want to learn more, you should check out their [article about color blindness](#).

Dichromacy



Original Color
13675160

Protanopia
12235420

Deuteranopia
13478808



Tritanopia
13870771

Trichromacy



Original Color
13675160

Protanomaly
12758939

Deuteranomaly
13544344

Tritanomaly
13805481

Monochromacy



Original Color
13675160

Achromatopsia
11776947

Achromatomaly
12497065

CSS Examples

Text

The CSS property to change the color of the text to Decimal 13675160 is called "color". The color property can be set on classes, ids or directly on the HTML element.

This example shows how text in the color #D0AA98 looks like.

```
.text, #text, p{  
    color:#D0AA98  
}
```

If you want to add a text shadow in that color use the text-shadow property, you can generate a text shadow directly with our [CSS Text Shadow Generator](#).

Here you see how black text with a 4 pixel #D0AA98 colored shadow looks like.

```
.shadow{ text-shadow: 4px 4px 2px #D0AA98
}
```

Border

The CSS property to change the border of an element to Decimal 13675160 is called "border". The border property can be set on classes, ids or directly on the HTML element.

This example shows the color as border, it can be applied via the CSS property "border" or "border-color".

```
.border, #border, table{ border:4px solid
#D0AA98 }
```

If only the border color should be changed use the property `border-color`.

```
.border{ border-color:#D0AA98 }
```

If you want to add a box shadow in that color use:

Here you see how a box with a 4 pixel #D0AA98 colored shadow looks like.

```
.boxshadow{ -moz-box-shadow:4px 4px 4px  
4px #D0AA98; -webkit-box-shadow:4px 4px  
4px 4px #D0AA98; box-shadow:4px 4px 4px  
4px #D0AA98 }
```

Background

The CSS property to change the background color of an element to Decimal 13675160 is called "background". The background property can be set on classes, ids or directly on the HTML element.

```
.background, #background, body{  
background:#D0AA98 }
```

If only the background color should be changed can be used:

```
.background{ background-color:#D0AA98 }
```

This example shows the color as background, it is applied via the CSS property "background".

To optimize and compress your CSS code, you can use our [online CSS compressor and optimizer](#) based on csstidy. If you want to create a linear or radial gradient as background or border, check our [CSS Gradient Generator](#).

Hey! You found this booklet interesting? Support Converting Colors with the new Membership Option!

The pro membership hides all ads, plus gives you double the colors in the color bucket, and more awesome pro features!

[Learn more, Memberships starting at \\$2.50/m!](#)

**Follow me
on Twitter!**

@ConvertingColor