

# Converting Colors

Decimal(13675665)

Have a look what the booklet for  
Decimal(13675665) contains.

<b>Decimal(13675665)</b> .....	3
<i><b>Conversions</b></i> .....	4
<i><b>Details</b></i> .....	6
<i><b>Harmonies</b></i> .....	11
<i><b>Previews</b></i> .....	23
<i><b>Color Blindness Simulation</b></i> .....	26
<i><b>CSS Examples</b></i> .....	29

# **Color**

**Decimal(13675665)**

# Conversions

## Conversions Part 1

<b>Format</b>	<b>Color</b>
Hex	D0AC91
RGB	208, 172, 145
RGB Percent	82%, 67%, 57%
CMY	0.1843, 0.3255, 0.4314
CMYK	0.00, 0.17, 0.30, 0.18
HSL	26°, 40%, 69%
HSV	26°, 30%, 82%
XYZ	45.8758, 44.9593, 33.0482
YIQ	179.6860, 30.1230, -0.7650

# Conversions

## Conversions Part 2

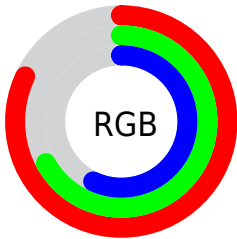
<b>Format</b>	<b>Color</b>
R <sub>Y</sub> B	208, 192, 145
Decimal	13675665
CIE Lab	72.87, 9.17, 18.81
CIE LCh	73, 20.924, 64.006
Yxy	44.9593, 0.3703, 0.3629
Android (android.graphics.Color)	4291865745 (0xFFD0AC91)
YUV	179.6860, -17.1002, 24.8314
Hunter-Lab	67.0517, 4.7867, 17.7136

# Details

The Decimal color **13675665** is a light color, and the websafe version is hex **CC9999**. A complement of this color would be **9549264**, and the grayscale version is **11842740**.

A 20% lighter version of the original color is **16769991**, and **10057822** is the 20% darker color. If you saturate the color by 10%, you get **13672572**, and if you desaturate by 10%, it is **13678758**.

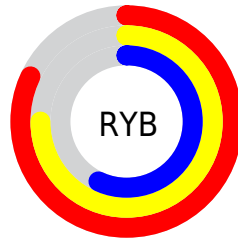
# Distribution



Red (82%)

Green (67%)

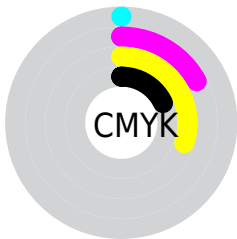
Blue (57%)



Red (82%)

Yellow (75%)

Blue (57%)

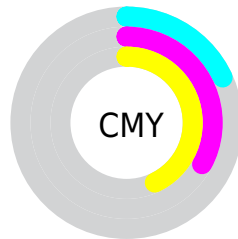


Cyan (0%)

Magenta (17%)

Yellow (30%)

Black (18%)



Cyan (18%)

Magenta (33%)

Yellow (43%)

# Brightness & Saturation Gradients

These gradients show how the Decimal color 13675665 changes by changing the brightness by 10 percent. The first figure shows a shift by +10% for each color and the second figure -10%.

Similar to the brightness gradients but the following saturation gradients show a change of the Decimal color 13675665 by changing the saturation by 10% instead.



 13675665

 13675665

16777215

 11833719

 16769991

 10057822

 16777187

 8281927

 6571824

 4927771

 3415041

 1901312

 0

 13675665

 13675665

 13672572

 13678758

 13669479

 13681851

 13666387

 13684943

 13663294

 13688036

 13660457

 13690873

 13657364

 13693951

 13654272

 13697023

# Harmonies

## Analogous

The Analogous color harmony consists of three colors that are next to each other on the color wheel.



14329758



13675665



12563085

# Triad

The Triadic color harmony groups three colors that are evenly spaced from another and form a triangle on the color wheel.



13675665



8634037



12168659

# Complementary

The Complementary color scheme is a pair of colors which are on the opposite of each other on the color wheel.



13675665



9549264

# Split Complementary

Split-complementary colors differ from the complementary color scheme. The scheme consists of three colors, the original color and two neighbors of the complement color.



10532057



13675665



8306119

# Square

The Square scheme is like the rectangle color scheme, but the four colors are evenly spaced on the color wheel.



13675665



9747617



9026005



13543620

# Rectangle

The Rectangle color scheme consists of four colors that form a rectangle on the color wheel.



13675665



11646608



9026005



11644886

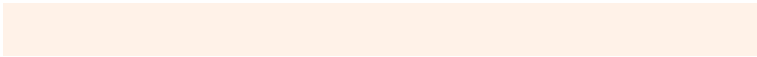


# Sweetspot

The Sweet Spot groups the original color and five complimentary colors.



13675665



16773864



13668790



8419185



0



8421504



# Same Dimension

The Same Dimension uses a secret algorithm to generate beautiful new colors.



13675665



16763811



13683601



6906718



11028480



2691328

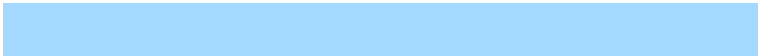


# Inverse Universe

The Inverse Universe completely reimagines the original color for something new.



9549264



10737919



9541328



6186089



24744



5929



# Previews

## White Background



This preview shows how the Decimal color 13675665 looks on a white background.

## Color Contrast Check

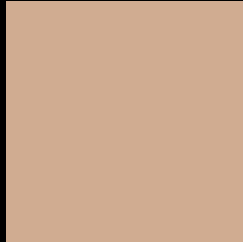
Large Text (above 18pt) WCAG AA × Fail

Any Text WCAG AA × Fail

Large Text (above 18pt) WCAG AAA × Fail

Any Text WCAG AAA × Fail

# Black Background



This preview shows how the Decimal color 13675665 looks on a black background.

## Color Contrast Check

Large Text (above 18pt) WCAG AA ✓ Pass

Any Text WCAG AA ✓ Pass

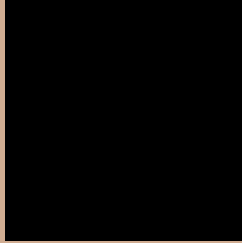
Large Text (above 18pt) WCAG AAA ✓ Pass

Any Text WCAG AAA ✓ Pass

If you want to check with other color combinations, try the [Color Contrast Checker](#).



## Decimal 13675665 Background



This preview shows how black text looks on a background with the Decimal color 13675665.




This preview shows how white text looks on a background with the Decimal color 13675665.

# Color Blindness Simulation

Color vision deficiency is a very complex topic, and I could not describe the different causes any better than Wikipedia does, so if you want to learn more, you should check out their [article about color blindness](#).

## Dichromacy





**Tritanopia**  
13936564

# Trichromacy



**Original Color**  
13675665

**Protanomaly**  
12890259

**Deuteranomaly**  
13675665

**Tritanomaly**  
13871527

# Monochromacy



**Original Color**  
13675665

**Achromatopsia**  
11842740

**Achromatomaly**  
12497319

# CSS Examples

## Text

The CSS property to change the color of the text to Decimal 13675665 is called "color". The color property can be set on classes, ids or directly on the HTML element.

This example shows how text in the color #D0AC91 looks like.

```
.text, #text, p{  
    color:#D0AC91  
}
```

If you want to add a text shadow in that color use the text-shadow property, you can generate a text shadow directly with our [CSS Text Shadow Generator](#).

Here you see how black text with a 4 pixel #D0AC91 colored shadow looks like.

```
.shadow{ text-shadow: 4px 4px 2px #D0AC91
}
```

## Border

The CSS property to change the border of an element to Decimal 13675665 is called "border". The border property can be set on classes, ids or directly on the HTML element.

This example shows the color as border, it can be applied via the CSS property "border" or "border-color".

```
.border, #border, table{ border:4px solid
#D0AC91 }
```

If only the border color should be changed use the property `border-color`.

```
.border{ border-color:#D0AC91 }
```

If you want to add a box shadow in that color use:

Here you see how a box with a 4 pixel #D0AC91 colored shadow looks like.

```
.boxshadow{ -moz-box-shadow:4px 4px 4px  
4px #D0AC91; -webkit-box-shadow:4px 4px  
4px 4px #D0AC91; box-shadow:4px 4px 4px  
4px #D0AC91 }
```

# Background

The CSS property to change the background color of an element to Decimal 13675665 is called "background". The background property can be set on classes, ids or directly on the HTML element.

```
.background, #background, body{  
background:#D0AC91 }
```

If only the background color should be changed can be used:

```
.background{ background-color:#D0AC91 }
```

This example shows the color as background, it is applied via the CSS property "background".

To optimize and compress your CSS code, you can use our [online CSS compressor and optimizer](#) based on csstidy. If you want to create a linear or radial gradient as background or border, check our [CSS Gradient Generator](#).



Hey! You found this booklet interesting? Support Converting Colors with the new Membership Option!

The pro membership hides all ads, plus gives you double the colors in the color bucket, and more awesome pro features!

**[Learn more, Memberships starting at \\$2.50/m!](#)**

**Follow me  
on Twitter!**

@ConvertingColor