

Converting Colors

Decimal(13675959)

Have a look what the booklet for
Decimal(13675959) contains.

Decimal(13675959)	3
<i>Conversions</i>	4
<i>Details</i>	6
<i>Harmonies</i>	11
<i>Previews</i>	23
<i>Color Blindness Simulation</i>	26
<i>CSS Examples</i>	29

Color

Decimal(13675959)

Conversions

Conversions Part 1

Format	Color
Hex	D0ADB7
RGB	208, 173, 183
RGB Percent	82%, 68%, 72%
CMY	0.1843, 0.3216, 0.2824
CMYK	0.00, 0.17, 0.12, 0.18
HSL	343°, 27%, 75%
HSV	343°, 17%, 82%
XYZ	49.5032, 46.7159, 51.2077
YIQ	184.6050, 17.6500, 10.5300

Conversions

Conversions Part 2

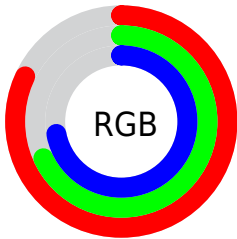
Format	Color
R _Y B	208, 173, 183
Decimal	13675959
CIE Lab	74.01, 14.32, -0.35
CIE LCh	74, 14.326, 358.612
Yxy	46.7159, 0.3358, 0.3169
Android (android.graphics.Color)	4291866039 (0xFFD0ADB7)
YUV	184.6050, -0.7913, 20.5174
Hunter-Lab	68.3491, 9.6715, 3.4237

Details

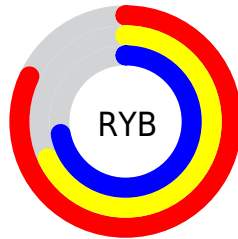
The Decimal color **13675959** is a light color, and the websafe version is hex **CC9999**. A complement of this color would be **11391174**, and the grayscale version is **12171705**.

A 20% lighter version of the original color is **16770543**, and **10058114** is the 20% darker color. If you saturate the color by 10%, you get **13670568**, and if you desaturate by 10%, it is **13681350**.

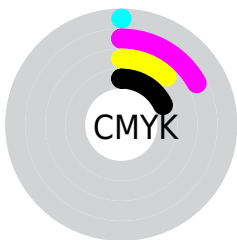
Distribution



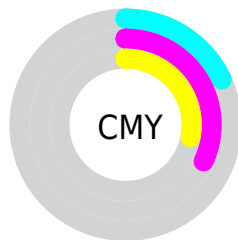
- Red (82%)
- Green (68%)
- Blue (72%)



- Red (82%)
- Yellow (68%)
- Blue (72%)



- Cyan (0%)
- Magenta (17%)
- Yellow (12%)
- Black (18%)



- Cyan (18%)
- Magenta (32%)
- Yellow (28%)

Brightness & Saturation Gradients

These gradients show how the Decimal color 13675959 changes by changing the brightness by 10 percent. The first figure shows a shift by +10% for each color and the second figure -10%.

Similar to the brightness gradients but the following saturation gradients show a change of the Decimal color 13675959 by changing the saturation by 10% instead.

 13675959

 13675959

16777215

 11834012

 16770543

 10058114

 8347753

 6703185

 5058874

 3546148

 2229007

 0

 13675959

 13675959

 13670568

 13681350

 13665177

 13686741

 13660042

 13691876

 13654652

 13697010

 13649261

 13697023

 13643870

 13638479

 13633344

 13631547

Harmonies

Analogous

The Analogous color harmony consists of three colors that are next to each other on the color wheel.



13086660



13675959



13807274

Triad

The Triadic color harmony groups three colors that are evenly spaced from another and form a triangle on the color wheel.



13675959



11778463



10140620

Complementary

The Complementary color scheme is a pair of colors which are on the opposite of each other on the color wheel.



13675959



11391174

Split Complementary

Split-complementary colors differ from the complementary color scheme. The scheme consists of three colors, the original color and two neighbors of the complement color.



9747906



13675959



10796200

Square

The Square scheme is like the rectangle color scheme, but the four colors are evenly spaced on the color wheel.



13675959



12694940



10010293



10991568

Rectangle

The Rectangle color scheme consists of four colors that form a rectangle on the color wheel.



13675959



13610915



10010293



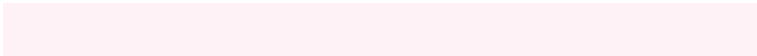
9944265

Sweetspot

The Sweet Spot groups the original color and five complimentary colors.



13675959



16773878



13020624



8419450



0



8421504

Same Dimension

The Same Dimension uses a secret algorithm to generate beautiful new colors.



13675959



16764123



13677741



6905441



11010096



2686988

Inverse Universe

The Inverse Universe completely reimagines the original color for something new.



13675959



16764123



11389392



6905441



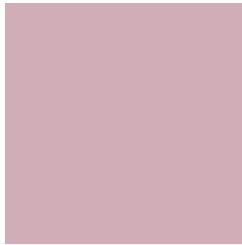
11010096



2686988

Previews

White Background



This preview shows how the Decimal color 13675959 looks on a white background.

Color Contrast Check

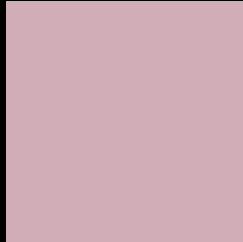
Large Text (above 18pt) WCAG AA × Fail

Any Text WCAG AA × Fail

Large Text (above 18pt) WCAG AAA × Fail

Any Text WCAG AAA × Fail

Black Background



This preview shows how the Decimal color 13675959 looks on a black background.

Color Contrast Check

Large Text (above 18pt) WCAG AA ✓ Pass

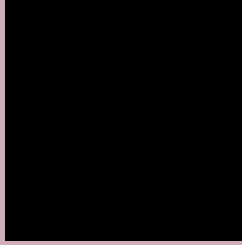
Any Text WCAG AA ✓ Pass

Large Text (above 18pt) WCAG AAA ✓ Pass

Any Text WCAG AAA ✓ Pass

If you want to check with other color combinations, try the [Color Contrast Checker](#).

Decimal 13675959 Background



This preview shows how black text looks on a background with the Decimal color 13675959.



This preview shows how white text looks on a background with the Decimal color 13675959.

Color Blindness Simulation

Color vision deficiency is a very complex topic, and I could not describe the different causes any better than Wikipedia does, so if you want to learn more, you should check out their [article about color blindness](#).


Dichromacy



Original Color
13675959

Protanopia
12105148

Deuteranopia
13086902



Tritanopia
13675962

Trichromacy



Original Color
13675959

Protanomaly
12694202

Deuteranomaly
13283254

Tritanomaly
13675961

Monochromacy



Original Color
13675959

Achromatopsia
12171705

Achromatomaly
12694968

CSS Examples

Text

The CSS property to change the color of the text to Decimal 13675959 is called "color". The color property can be set on classes, ids or directly on the HTML element.

This example shows how text in the color #D0ADB7 looks like.

```
.text, #text, p{  
  color:#D0ADB7  
}
```

If you want to add a text shadow in that color use the text-shadow property, you can generate a text shadow directly with our [CSS Text Shadow Generator](#).

Here you see how black text with a 4 pixel #D0ADB7 colored shadow looks like.

```
.shadow{ text-shadow: 4px 4px 2px #D0ADB7  
}
```

Border

The CSS property to change the border of an element to Decimal 13675959 is called "border". The border property can be set on classes, ids or directly on the HTML element.

This example shows the color as border, it can be applied via the CSS property "border" or "border-color".

```
.border, #border, table{ border:4px solid  
#D0ADB7 }
```

If only the border color should be changed use the property `border-color`.

```
.border{ border-color:#D0ADB7 }
```

If you want to add a box shadow in that color use:

Here you see how a box with a 4 pixel #D0ADB7 colored shadow looks like.

```
.boxshadow{ -moz-box-shadow:4px 4px 4px  
4px #D0ADB7; -webkit-box-shadow:4px 4px  
4px 4px #D0ADB7; box-shadow:4px 4px 4px  
4px #D0ADB7 }
```

Background

The CSS property to change the background color of an element to Decimal 13675959 is called "background". The background property can be set on classes, ids or directly on the HTML element.

```
.background, #background, body{  
background:#D0ADB7 }
```

If only the background color should be changed can be used:

```
.background{ background-color:#D0ADB7 }
```

This example shows the color as background, it is applied via the CSS property "background".

To optimize and compress your CSS code, you can use our [online CSS compressor and optimizer](#) based on csstidy. If you want to create a linear or radial gradient as background or border, check our [CSS Gradient Generator](#).

Hey! You found this booklet interesting? Support Converting Colors with the new Membership Option!

The pro membership hides all ads, plus gives you double the colors in the color bucket, and more awesome pro features!

[Learn more, Memberships starting at \\$2.50/m!](#)

**Follow me
on Twitter!**

@ConvertingColor