

Converting Colors

Decimal(13677983)

Have a look what the booklet for
Decimal(13677983) contains.

Decimal(13677983)	3
<i>Conversions</i>	4
<i>Details</i>	6
<i>Harmonies</i>	11
<i>Previews</i>	23
<i>Color Blindness Simulation</i>	26
<i>CSS Examples</i>	29

Color

Decimal(13677983)

Conversions

Conversions Part 1

Format	Color
Hex	D0B59F
RGB	208, 181, 159
RGB Percent	82%, 71%, 62%
CMY	0.1843, 0.2902, 0.3765
CMYK	0.00, 0.13, 0.24, 0.18
HSL	27°, 34%, 72%
HSV	27°, 24%, 82%
XYZ	48.7943, 48.9608, 39.6795
YIQ	186.5650, 23.1540, -1.1180

Conversions

Conversions Part 2

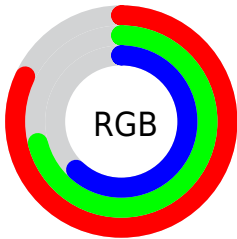
Format	Color
R _Y B	208, 199, 159
Decimal	13677983
CIE Lab	75.43, 6.27, 14.78
CIE LCh	75, 16.054, 66.992
Yxy	48.9608, 0.3550, 0.3562
Android (android.graphics.Color)	4291868063 (0xFFD0B59F)
YUV	186.5650, -13.5895, 18.7985
Hunter-Lab	69.9720, 2.0242, 15.3584

Details

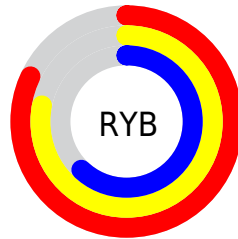
The Decimal color **13677983** is a light color, and the websafe version is hex **CC9999**. A complement of this color would be **10468048**, and the grayscale version is **12303291**.

A 20% lighter version of the original color is **16772566**, and **10059884** is the 20% darker color. If you saturate the color by 10%, you get **13675146**, and if you desaturate by 10%, it is **13680820**.

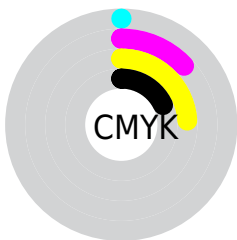
Distribution



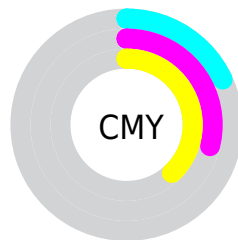
- Red (82%)
- Green (71%)
- Blue (62%)



- Red (82%)
- Yellow (78%)
- Blue (62%)



- Cyan (0%)
- Magenta (13%)
- Yellow (24%)
- Black (18%)



- Cyan (18%)
- Magenta (29%)
- Yellow (38%)

Brightness & Saturation Gradients

These gradients show how the Decimal color 13677983 changes by changing the brightness by 10 percent. The first figure shows a shift by +10% for each color and the second figure -10%.

Similar to the brightness gradients but the following saturation gradients show a change of the Decimal color 13677983 by changing the saturation by 10% instead.

 13677983

 13677983

16777215

 11836037

 16772566

 10059884

 16777202

 8349523

 6639420

 5060646

 3482386

 2100736

 0

 13677983

 13677983

 13675146

 13680820

 13672053

 13683913

 13669217

 13686749

 13666124

 13689842

 13663287

 13692671

 13660194

 13695743

 13657357

 13697023

 13655296

Harmonies

Analogous

The Analogous color harmony consists of three colors that are next to each other on the color wheel.



14201257



13677983



12761757

Triad

The Triadic color harmony groups three colors that are evenly spaced from another and form a triangle on the color wheel.



13677983



9880509



12694993

Complementary

The Complementary color scheme is a pair of colors which are on the opposite of each other on the color wheel.



13677983



10468048

Split Complementary

Split-complementary colors differ from the complementary color scheme. The scheme consists of three colors, the original color and two neighbors of the complement color.



11451095



13677983



9749195

Square

The Square scheme is like the rectangle color scheme, but the four colors are evenly spaced on the color wheel.



13677983



10600878



10338005



13676998

Rectangle

The Rectangle color scheme consists of four colors that form a rectangle on the color wheel.



13677983



12041631



10338005



12302292

Sweetspot

The Sweet Spot groups the original color and five complimentary colors.



13677983



16774637



13672379



8419957



0



8421504

Same Dimension

The Same Dimension uses a secret algorithm to generate beautiful new colors.



13677983



16767160



13684127



6906718



11029504



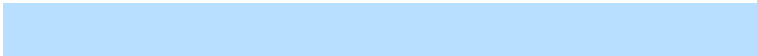
2691584

Inverse Universe

The Inverse Universe completely reimagines the original color for something new.



10468048



12115967



10461904



6186089



23976



5673

Previews

White Background



This preview shows how the Decimal color 13677983 looks on a white background.

Color Contrast Check

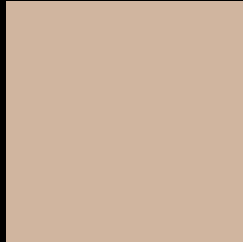
Large Text (above 18pt) WCAG AA × Fail

Any Text WCAG AA × Fail

Large Text (above 18pt) WCAG AAA × Fail

Any Text WCAG AAA × Fail

Black Background



This preview shows how the Decimal color 13677983 looks on a black background.

Color Contrast Check

Large Text (above 18pt) WCAG AA ✓ Pass

Any Text WCAG AA ✓ Pass

Large Text (above 18pt) WCAG AAA ✓ Pass

Any Text WCAG AAA ✓ Pass

If you want to check with other color combinations, try the [Color Contrast Checker](#).

Decimal 13677983 Background



This preview shows how black text looks on a background with the Decimal color 13677983.



This preview shows how white text looks on a background with the Decimal color 13677983.

Color Blindness Simulation

Color vision deficiency is a very complex topic, and I could not describe the different causes any better than Wikipedia does, so if you want to learn more, you should check out their [article about color blindness](#).

Dichromacy





Tritanopia
13938878

Trichromacy



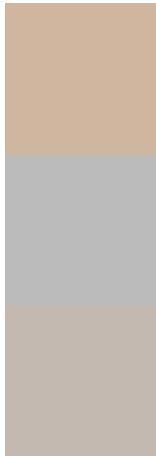
Original Color
13677983

Protanomaly
13154464

Deuteranomaly
13874335

Tritanomaly
13873843

Monochromacy



Original Color
13677983

Achromatopsia
12303291

Achromatomaly
12827057

CSS Examples

Text

The CSS property to change the color of the text to Decimal 13677983 is called "color". The color property can be set on classes, ids or directly on the HTML element.

This example shows how text in the color #D0B59F looks like.

```
.text, #text, p{  
    color:#D0B59F  
}
```

If you want to add a text shadow in that color use the text-shadow property, you can generate a text shadow directly with our [CSS Text Shadow Generator](#).

Here you see how black text with a 4 pixel #D0B59F colored shadow looks like.

```
.shadow{ text-shadow: 4px 4px 2px #D0B59F
}
```

Border

The CSS property to change the border of an element to Decimal 13677983 is called "border". The border property can be set on classes, ids or directly on the HTML element.

This example shows the color as border, it can be applied via the CSS property "border" or "border-color".

```
.border, #border, table{ border:4px solid
#D0B59F }
```

If only the border color should be changed use the property `border-color`.

```
.border{ border-color:#D0B59F }
```

If you want to add a box shadow in that color use:

Here you see how a box with a 4 pixel #D0B59F colored shadow looks like.

```
.boxshadow{ -moz-box-shadow:4px 4px 4px  
4px #D0B59F; -webkit-box-shadow:4px 4px  
4px 4px #D0B59F; box-shadow:4px 4px 4px  
4px #D0B59F }
```

Background

The CSS property to change the background color of an element to Decimal 13677983 is called "background". The background property can be set on classes, ids or directly on the HTML element.

```
.background, #background, body{  
background:#D0B59F }
```

If only the background color should be changed can be used:

```
.background{ background-color:#D0B59F }
```

This example shows the color as background, it is applied via the CSS property "background".

To optimize and compress your CSS code, you can use our [online CSS compressor and optimizer](#) based on csstidy. If you want to create a linear or radial gradient as background or border, check our [CSS Gradient Generator](#).

Hey! You found this booklet interesting? Support Converting Colors with the new Membership Option!

The pro membership hides all ads, plus gives you double the colors in the color bucket, and more awesome pro features!

[Learn more, Memberships starting at \\$2.50/m!](#)

**Follow me
on Twitter!**

@ConvertingColor