

Converting Colors

Decimal(13678776)

Have a look what the booklet for
Decimal(13678776) contains.

Decimal(13678776)	3
<i>Conversions</i>	4
<i>Details</i>	6
<i>Harmonies</i>	11
<i>Previews</i>	23
<i>Color Blindness Simulation</i>	26
<i>CSS Examples</i>	29

Color

Decimal(13678776)

Conversions

Conversions Part 1

Format	Color
Hex	D0B8B8
RGB	208, 184, 184
RGB Percent	82%, 72%, 72%
CMY	0.1843, 0.2784, 0.2784
CMYK	0.00, 0.12, 0.12, 0.18
HSL	0°, 20%, 77%
HSV	0°, 12%, 82%
XYZ	51.8046, 51.1516, 52.4902
YIQ	191.1760, 14.3040, 5.0880

Conversions

Conversions Part 2

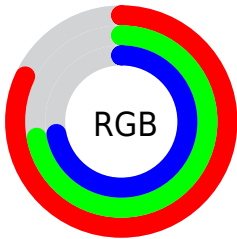
Format	Color
R _Y B	208, 184, 184
Decimal	13678776
CIE Lab	76.77, 8.55, 3.13
CIE LCh	77, 9.107, 20.096
Yxy	51.1516, 0.3333, 0.3291
Android (android.graphics.Color)	4291868856 (0xFFD0B8B8)
YUV	191.1760, -3.5378, 14.7546
Hunter-Lab	71.5203, 4.1332, 6.5501

Details

The Decimal color **13678776** is a light color, and the websafe version is hex **CCCCCC**. A complement of this color would be **12112080**, and the grayscale version is **12566463**.

A 20% lighter version of the original color is **16773360**, and **10060675** is the 20% darker color. If you saturate the color by 10%, you get **13673379**, and if you desaturate by 10%, it is **13684173**.

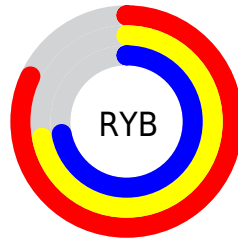
Distribution



Red (82%)

Green (72%)

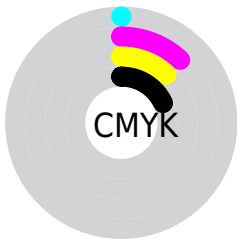
Blue (72%)



Red (82%)

Yellow (72%)

Blue (72%)

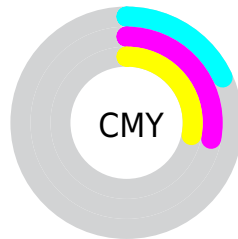


Cyan (0%)

Magenta (12%)

Yellow (12%)

Black (18%)



Cyan (18%)

Magenta (28%)

Yellow (28%)

Brightness & Saturation Gradients

These gradients show how the Decimal color 13678776 changes by changing the brightness by 10 percent. The first figure shows a shift by +10% for each color and the second figure -10%.

Similar to the brightness gradients but the following saturation gradients show a change of the Decimal color 13678776 by changing the saturation by 10% instead.

 13678776

 13678776

16777215

 11836829

 16773360

 10060675

 8350314

 6705746

 5126971

 3613989

 2166800

 0

 13678776

 13678776

 13673379

 13684173

 13667982

 13689570

 13662842

 13694710

 13657445

 13697023

 13652048

 13646651

 13641254

 13636114

 13631488

Harmonies

Analogous

The Analogous color harmony consists of three colors that are next to each other on the color wheel.



13482177



13678776



13547953

Triad

The Triadic color harmony groups three colors that are evenly spaced from another and form a triangle on the color wheel.



13678776



11911602



11714510

Complementary

The Complementary color scheme is a pair of colors which are on the opposite of each other on the color wheel.



13678776



12112080

Split Complementary

Split-complementary colors differ from the complementary color scheme. The scheme consists of three colors, the original color and two neighbors of the complement color.



11256266



13678776



11387578

Square

The Square scheme is like the rectangle color scheme, but the four colors are evenly spaced on the color wheel.



13678776



12500910



11125443



12369101

Rectangle

The Rectangle color scheme consists of four colors that form a rectangle on the color wheel.



13678776



13286318



11125443



11518157

Sweetspot

The Sweet Spot groups the original color and five complimentary colors.



13678776



16775159



13678800



8419962



0



8421504

Same Dimension

The Same Dimension uses a secret algorithm to generate beautiful new colors.



13678776



16767963



13681848



6905438



11010048



2686976

Inverse Universe

The Inverse Universe completely reimagines the original color for something new.



12112080



14417919



12109008



6187369



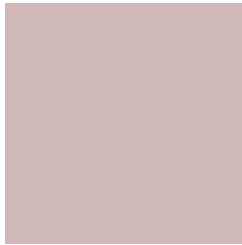
43176



10537

Previews

White Background



This preview shows how the Decimal color 13678776 looks on a white background.

Color Contrast Check

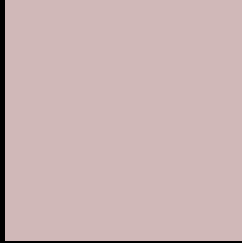
Large Text (above 18pt) WCAG AA × Fail

Any Text WCAG AA × Fail

Large Text (above 18pt) WCAG AAA × Fail

Any Text WCAG AAA × Fail

Black Background



This preview shows how the Decimal color 13678776 looks on a black background.

Color Contrast Check

Large Text (above 18pt) WCAG AA ✓ Pass

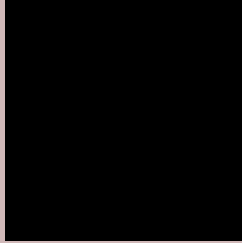
Any Text WCAG AA ✓ Pass

Large Text (above 18pt) WCAG AAA ✓ Pass

Any Text WCAG AAA ✓ Pass

If you want to check with other color combinations, try the [Color Contrast Checker](#).

Decimal 13678776 Background



This preview shows how black text looks on a background with the Decimal color 13678776.



This preview shows how white text looks on a background with the Decimal color 13678776.

Color Blindness Simulation

Color vision deficiency is a very complex topic, and I could not describe the different causes any better than Wikipedia does, so if you want to learn more, you should check out their [article about color blindness](#).

Dichromacy



Original Color
13678776

Protanopia
12762555

Deuteranopia
13809592



Tritanopia
13809348

Trichromacy



Original Color
13678776

Protanomaly
13089722

Deuteranomaly
13744056

Tritanomaly
13744064

Monochromacy



Original Color
13678776

Achromatopsia
12566463

Achromatomaly
12958908

CSS Examples

Text

The CSS property to change the color of the text to Decimal 13678776 is called "color". The color property can be set on classes, ids or directly on the HTML element.

This example shows how text in the color #D0B8B8 looks like.

```
.text, #text, p{  
    color:#D0B8B8  
}
```

If you want to add a text shadow in that color use the text-shadow property, you can generate a text shadow directly with our [CSS Text Shadow Generator](#).

Here you see how black text with a 4 pixel #D0B8B8 colored shadow looks like.

```
.shadow{ text-shadow: 4px 4px 2px #D0B8B8
}
```

Border

The CSS property to change the border of an element to Decimal 13678776 is called "border". The border property can be set on classes, ids or directly on the HTML element.

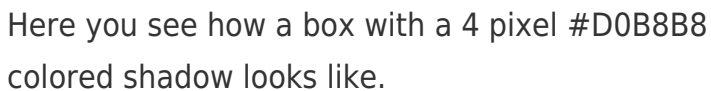
This example shows the color as border, it can be applied via the CSS property "border" or "border-color".

```
.border, #border, table{ border:4px solid
#D0B8B8 }
```

If only the border color should be changed use the property `border-color`.

```
.border{ border-color:#D0B8B8 }
```

If you want to add a box shadow in that color use:



Here you see how a box with a 4 pixel #D0B8B8 colored shadow looks like.

```
.boxshadow{ -moz-box-shadow:4px 4px 4px  
4px #D0B8B8; -webkit-box-shadow:4px 4px  
4px 4px #D0B8B8; box-shadow:4px 4px 4px  
4px #D0B8B8 }
```

Background

The CSS property to change the background color of an element to Decimal 13678776 is called "background". The background property can be set on classes, ids or directly on the HTML element.

```
.background, #background, body{  
background:#D0B8B8 }
```

If only the background color should be changed can be used:

```
.background{ background-color:#D0B8B8 }
```

This example shows the color as background, it is applied via the CSS property "background".

To optimize and compress your CSS code, you can use our [online CSS compressor and optimizer](#) based on csstidy. If you want to create a linear or radial gradient as background or border, check our [CSS Gradient Generator](#).

Hey! You found this booklet interesting? Support Converting Colors with the new Membership Option!

The pro membership hides all ads, plus gives you double the colors in the color bucket, and more awesome pro features!

[Learn more, Memberships starting at \\$2.50/m!](#)

**Follow me
on Twitter!**

@ConvertingColor