

# Converting Colors

Decimal(13680306)

Have a look what the booklet for  
Decimal(13680306) contains.

<b>Decimal(13680306)</b> .....	3
<i><b>Conversions</b></i> .....	4
<i><b>Details</b></i> .....	6
<i><b>Harmonies</b></i> .....	11
<i><b>Previews</b></i> .....	23
<i><b>Color Blindness Simulation</b></i> .....	26
<i><b>CSS Examples</b></i> .....	29

# **Color**

**Decimal(13680306)**

# Conversions

## Conversions Part 1

Format	Color
Hex	D0BEB2
RGB	208, 190, 178
RGB Percent	82%, 75%, 70%
CMY	0.1843, 0.2549, 0.3020
CMYK	0.00, 0.09, 0.14, 0.18
HSL	24°, 24%, 76%
HSV	24°, 14%, 82%
XYZ	52.4618, 53.4512, 49.6716
YIQ	194.0140, 14.5800, 0.0840

# Conversions

## Conversions Part 2

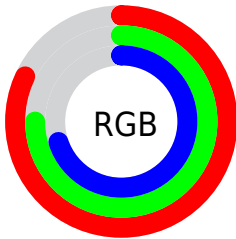
<b>Format</b>	<b>Color</b>
<a href="#">RYB</a>	<a href="#">208, 198, 178</a>
Decimal	<a href="#">13680306</a>
CIELab	<a href="#">78.14, 4.37, 8.35</a>
CIELCh	<a href="#">78, 9.423, 62.389</a>
Yxy	<a href="#">53.4512, 0.3372, 0.3436</a>
Android (android.graphics.Color)	<a href="#">4291870386</a> ( <a href="#">0xFFD0BEB2</a> )
YUV	<a href="#">194.0140, -7.8949, 12.2657</a>
Hunter-Lab	<a href="#">73.1103, 0.1432, 10.8952</a>

# Details

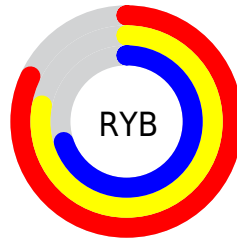
The Decimal color **13680306** is a light color, and the websafe version is hex **CCCCCC**. A complement of this color would be **11715792**, and the grayscale version is **12763842**.

A 20% lighter version of the original color is **16774890**, and **10062205** is the 20% darker color. If you saturate the color by 10%, you get **13677213**, and if you desaturate by 10%, it is **13683399**.

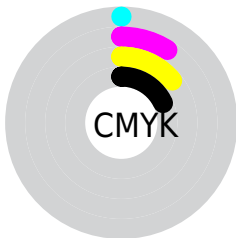
# Distribution



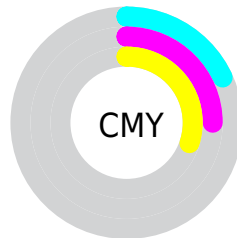
- Red (82%)
- Green (75%)
- Blue (70%)



- Red (82%)
- Yellow (78%)
- Blue (70%)



- Cyan (0%)
- Magenta (9%)
- Yellow (14%)
- Black (18%)



- Cyan (18%)
- Magenta (25%)
- Yellow (30%)

# Brightness & Saturation Gradients

These gradients show how the Decimal color 13680306 changes by changing the brightness by 10 percent. The first figure shows a shift by +10% for each color and the second figure -10%.

Similar to the brightness gradients but the following saturation gradients show a change of the Decimal color 13680306 by changing the saturation by 10% instead.



 13680306

 13680306

16777215

 11838359

 16774890

 10062205

 8351588

 6707021

 5128246

 3615264

 2168074

 0

 13680306

 13680306

 13677213

 13683399

 13673864

 13686748

 13670772

 13689840

 13667423

 13693183

 13664330

 13696255

 13660981

 13697023

 13657888

 13654540

 13652736

# Harmonies

## Analogous

The Analogous color harmony consists of three colors that are next to each other on the color wheel.



13941944



13680306



13156784

# Triad

The Triadic color harmony groups three colors that are evenly spaced from another and form a triangle on the color wheel.



13680306



11388866



12894160

# Complementary

The Complementary color scheme is a pair of colors which are on the opposite of each other on the color wheel.



13680306



11715792

# Split Complementary

Split-complementary colors differ from the complementary color scheme. The scheme consists of three colors, the original color and two neighbors of the complement color.



12174034



13680306



11323082

# Square

The Square scheme is like the rectangle color scheme, but the four colors are evenly spaced on the color wheel.



13680306



11847353



11584720



13548745

# Rectangle

The Rectangle color scheme consists of four colors that form a rectangle on the color wheel.



13680306



12698545



11584720



12632273



# Sweetspot

The Sweet Spot groups the original color and five complimentary colors.



13680306



16775669



13677252



8420473



0



8421504

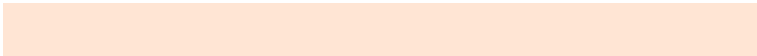


# Same Dimension

The Same Dimension uses a secret algorithm to generate beautiful new colors.



13680306



16770516



13684146



6906462



11027200



2691072

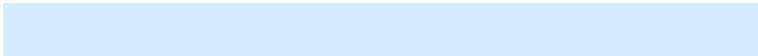


# Inverse Universe

The Inverse Universe completely reimagines the original color for something new.



11715792



13954815



11711952



6186089



26024

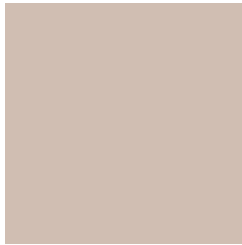


6185



# Previews

## White Background



This preview shows how the Decimal color 13680306 looks on a white background.

## Color Contrast Check

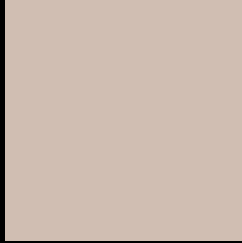
Large Text (above 18pt) WCAG AA × Fail

Any Text WCAG AA × Fail

Large Text (above 18pt) WCAG AAA × Fail

Any Text WCAG AAA × Fail

# Black Background



This preview shows how the Decimal color 13680306 looks on a black background.

## Color Contrast Check

Large Text (above 18pt) WCAG AA ✓ Pass

Any Text WCAG AA ✓ Pass

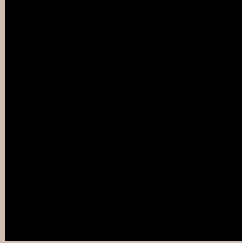
Large Text (above 18pt) WCAG AAA ✓ Pass

Any Text WCAG AAA ✓ Pass

If you want to check with other color combinations, try the [Color Contrast Checker](#).



## Decimal 13680306 Background



This preview shows how black text looks on a background with the Decimal color 13680306.



This preview shows how white text looks on a background with the Decimal color 13680306.

# Color Blindness Simulation

Color vision deficiency is a very complex topic, and I could not describe the different causes any better than Wikipedia does, so if you want to learn more, you should check out their [article about color blindness](#).

## Dichromacy





**Tritanopia**  
13876169

# Trichromacy



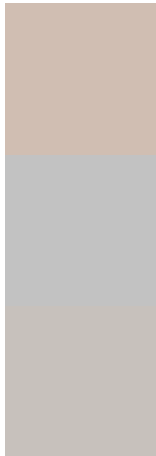
**Original Color**  
13680306

**Protanomaly**  
13353139

**Deuteranomaly**  
14073011

**Tritanomaly**  
13810881

# Monochromacy



**Original Color**  
13680306

**Achromatopsia**  
12763842

**Achromatomaly**  
13091260

# CSS Examples

## Text

The CSS property to change the color of the text to Decimal 13680306 is called "color". The color property can be set on classes, ids or directly on the HTML element.

This example shows how text in the color #D0BEB2 looks like.

```
.text, #text, p{  
    color:#D0BEB2  
}
```

If you want to add a text shadow in that color use the text-shadow property, you can generate a text shadow directly with our [CSS Text Shadow Generator](#).

Here you see how black text with a 4 pixel #D0BEB2 colored shadow looks like.

```
.shadow{ text-shadow: 4px 4px 2px #D0BEB2
}
```

## Border

The CSS property to change the border of an element to Decimal 13680306 is called "border". The border property can be set on classes, ids or directly on the HTML element.

This example shows the color as border, it can be applied via the CSS property "border" or "border-color".

```
.border, #border, table{ border:4px solid
#D0BEB2 }
```

If only the border color should be changed use the property `border-color`.

```
.border{ border-color:#D0BEB2 }
```

If you want to add a box shadow in that color use:

Here you see how a box with a 4 pixel #D0BEB2 colored shadow looks like.

```
.boxshadow{ -moz-box-shadow:4px 4px 4px  
4px #D0BEB2; -webkit-box-shadow:4px 4px  
4px 4px #D0BEB2; box-shadow:4px 4px 4px  
4px #D0BEB2 }
```

# Background

The CSS property to change the background color of an element to Decimal 13680306 is called "background". The background property can be set on classes, ids or directly on the HTML element.

```
.background, #background, body{  
background:#D0BEB2 }
```

If only the background color should be changed can be used:

```
.background{ background-color:#D0BEB2 }
```

This example shows the color as background, it is applied via the CSS property "background".

To optimize and compress your CSS code, you can use our [online CSS compressor and optimizer](#) based on csstidy. If you want to create a linear or radial gradient as background or border, check our [CSS Gradient Generator](#).



Hey! You found this booklet interesting? Support Converting Colors with the new Membership Option!

The pro membership hides all ads, plus gives you double the colors in the color bucket, and more awesome pro features!

**[Learn more, Memberships starting at \\$2.50/m!](#)**

**Follow me  
on Twitter!**

@ConvertingColor