

Converting Colors

Decimal(13680323)

Have a look what the booklet for
Decimal(13680323) contains.

Decimal(13680323)	3
<i>Conversions</i>	4
<i>Details</i>	6
<i>Harmonies</i>	11
<i>Previews</i>	23
<i>Color Blindness Simulation</i>	26
<i>CSS Examples</i>	29

Color

Decimal(13680323)

Conversions

Conversions Part 1

Format	Color
Hex	D0BEC3
RGB	208, 190, 195
RGB Percent	82%, 75%, 76%
CMY	0.1843, 0.2549, 0.2353
CMYK	0.00, 0.09, 0.06, 0.18
HSL	343°, 16%, 78%
HSV	343°, 9%, 82%
XYZ	54.2762, 54.1769, 59.2263
YIQ	195.9520, 9.1230, 5.3710

Conversions

Conversions Part 2

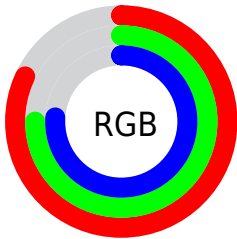
Format	Color
R _Y B	208, 190, 195
Decimal	13680323
CIE Lab	78.56, 7.21, -0.22
CIE LCh	79, 7.217, 358.270
Yxy	54.1769, 0.3237, 0.3231
Android (android.graphics.Color)	4291870403 (0xFFD0BEC3)
YUV	195.9520, -0.4693, 10.5661
Hunter-Lab	73.6050, 2.8169, 3.8158

Details

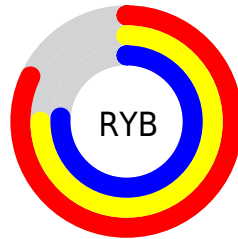
The Decimal color **13680323** is a light color, and the websafe version is hex **CCCCCC**. A complement of this color would be **12505291**, and the grayscale version is **12895428**.

A 20% lighter version of the original color is **16774908**, and **10127757** is the 20% darker color. If you saturate the color by 10%, you get **13674932**, and if you desaturate by 10%, it is **13685714**.

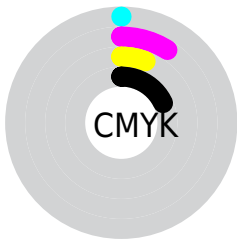
Distribution



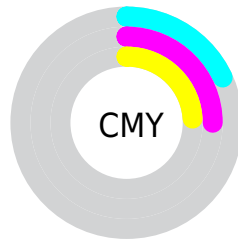
- Red (82%)
- Green (75%)
- Blue (76%)



- Red (82%)
- Yellow (75%)
- Blue (76%)



- Cyan (0%)
- Magenta (9%)
- Yellow (6%)
- Black (18%)



- Cyan (18%)
- Magenta (25%)
- Yellow (24%)

Brightness & Saturation Gradients

These gradients show how the Decimal color 13680323 changes by changing the brightness by 10 percent. The first figure shows a shift by +10% for each color and the second figure -10%.

Similar to the brightness gradients but the following saturation gradients show a change of the Decimal color 13680323 by changing the saturation by 10% instead.

 13680323

 13680323

16777215

 11838376

 16774908

 10127757

 8417140

 6707035

 5128260

 3615278

 2233625

 196608

 0

 13680323

 13680323

 13674932

 13685714

 13669541

 13691105

 13664406

 13696240

 13659015

 13697023

 13653624

 13648233

 13642842

 13637707

 13632316

Harmonies

Analogous

The Analogous color harmony consists of three colors that are next to each other on the color wheel.



13352906



13680323



13745852

Triad

The Triadic color harmony groups three colors that are evenly spaced from another and form a triangle on the color wheel.



13680323



12698807



11912654

Complementary

The Complementary color scheme is a pair of colors which are on the opposite of each other on the color wheel.



13680323



12505291

Split Complementary

Split-complementary colors differ from the complementary color scheme. The scheme consists of three colors, the original color and two neighbors of the complement color.



11716296



13680323



12175035

Square

The Square scheme is like the rectangle color scheme, but the four colors are evenly spaced on the color wheel.



13680323



13222581



11847362



12305360

Rectangle

The Rectangle color scheme consists of four colors that form a rectangle on the color wheel.



13680323



13680569



11847362



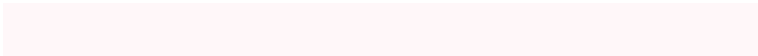
11781836

Sweetspot

The Sweet Spot groups the original color and five complimentary colors.



13680323



16775161



13352656



8419964



0



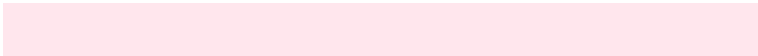
8421504

Same Dimension

The Same Dimension uses a secret algorithm to generate beautiful new colors.



13680323



16770797



13681342



6905441



11010095



2686987

Inverse Universe

The Inverse Universe completely reimagines the original color for something new.



13680323



16770797



12504272



6905441



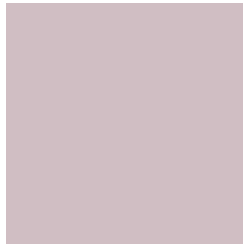
11010095



2686987

Previews

White Background



This preview shows how the Decimal color 13680323 looks on a white background.

Color Contrast Check

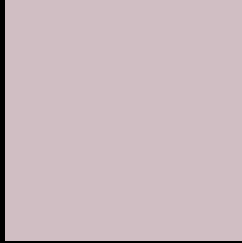
Large Text (above 18pt) WCAG AA × Fail

Any Text WCAG AA × Fail

Large Text (above 18pt) WCAG AAA × Fail

Any Text WCAG AAA × Fail

Black Background



This preview shows how the Decimal color 13680323 looks on a black background.

Color Contrast Check

Large Text (above 18pt) WCAG AA ✓ Pass

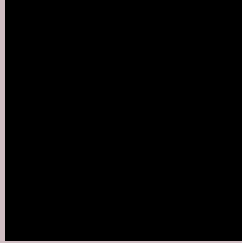
Any Text WCAG AA ✓ Pass

Large Text (above 18pt) WCAG AAA ✓ Pass

Any Text WCAG AAA ✓ Pass

If you want to check with other color combinations, try the [Color Contrast Checker](#).

Decimal 13680323 Background



This preview shows how black text looks on a background with the Decimal color 13680323.



This preview shows how white text looks on a background with the Decimal color 13680323.

Color Blindness Simulation

Color vision deficiency is a very complex topic, and I could not describe the different causes any better than Wikipedia does, so if you want to learn more, you should check out their [article about color blindness](#).


Dichromacy



Original Color
13680323

Protanopia
12960197

Deuteranopia
14007491



Tritanopia
13745611

Trichromacy



Original Color
13680323

Protanomaly
13222084

Deuteranomaly
13876675

Tritanomaly
13745608

Monochromacy



Original Color
13680323

Achromatopsia
12895428

Achromatomaly
13157060

CSS Examples

Text

The CSS property to change the color of the text to Decimal 13680323 is called "color". The color property can be set on classes, ids or directly on the HTML element.

This example shows how text in the color #D0BEC3 looks like.

```
.text, #text, p{  
    color:#D0BEC3  
}
```

If you want to add a text shadow in that color use the text-shadow property, you can generate a text shadow directly with our [CSS Text Shadow Generator](#).

Here you see how black text with a 4 pixel #D0BEC3 colored shadow looks like.

```
.shadow{ text-shadow: 4px 4px 2px #D0BEC3  
}
```

Border

The CSS property to change the border of an element to Decimal 13680323 is called "border". The border property can be set on classes, ids or directly on the HTML element.

This example shows the color as border, it can be applied via the CSS property "border" or "border-color".

```
.border, #border, table{ border:4px solid  
#D0BEC3 }
```

If only the border color should be changed use the property `border-color`.

```
.border{ border-color:#D0BEC3 }
```

If you want to add a box shadow in that color use:

Here you see how a box with a 4 pixel #D0BEC3 colored shadow looks like.

```
.boxshadow{ -moz-box-shadow:4px 4px 4px  
4px #D0BEC3; -webkit-box-shadow:4px 4px  
4px 4px #D0BEC3; box-shadow:4px 4px 4px  
4px #D0BEC3 }
```

Background

The CSS property to change the background color of an element to Decimal 13680323 is called "background". The background property can be set on classes, ids or directly on the HTML element.

```
.background, #background, body{  
background:#D0BEC3 }
```

If only the background color should be changed can be used:

```
.background{ background-color:#D0BEC3 }
```

This example shows the color as background, it is applied via the CSS property "background".

To optimize and compress your CSS code, you can use our [online CSS compressor and optimizer](#) based on csstidy. If you want to create a linear or radial gradient as background or border, check our [CSS Gradient Generator](#).

Hey! You found this booklet interesting? Support Converting Colors with the new Membership Option!

The pro membership hides all ads, plus gives you double the colors in the color bucket, and more awesome pro features!

[Learn more, Memberships starting at \\$2.50/m!](#)

**Follow me
on Twitter!**

@ConvertingColor