

Converting Colors

Decimal(13680573)

Have a look what the booklet for
Decimal(13680573) contains.

Decimal(13680573)	3
<i>Conversions</i>	4
<i>Details</i>	6
<i>Harmonies</i>	11
<i>Previews</i>	23
<i>Color Blindness Simulation</i>	26
<i>CSS Examples</i>	29

Color

Decimal(13680573)

Conversions

Conversions Part 1

Format	Color
Hex	D0BFBD
RGB	208, 191, 189
RGB Percent	82%, 75%, 74%
CMY	0.1843, 0.2510, 0.2588
CMYK	0.00, 0.08, 0.09, 0.18
HSL	6°, 17%, 78%
HSV	6°, 9%, 82%
XYZ	53.8285, 54.3456, 55.7968
YIQ	195.8550, 10.7740, 2.9820

Conversions

Conversions Part 2

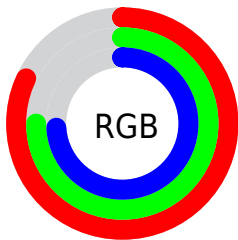
Format	Color
R _Y B	208, 191, 189
Decimal	13680573
CIE Lab	78.66, 5.65, 3.17
CIE LCh	79, 6.474, 29.269
Yxy	54.3456, 0.3283, 0.3314
Android (android.graphics.Color)	4291870653 (0xFFD0BFBD)
YUV	195.8550, -3.3795, 10.6512
Hunter-Lab	73.7195, 1.3281, 6.7282

Details

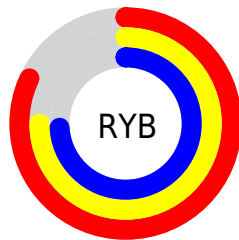
The Decimal color **13680573** is a light color, and the websafe version is hex **CCCCCC**. A complement of this color would be **12439248**, and the grayscale version is **12895428**.

A 20% lighter version of the original color is **16775157**, and **10128008** is the 20% darker color. If you saturate the color by 10%, you get **13675688**, and if you desaturate by 10%, it is **13685458**.

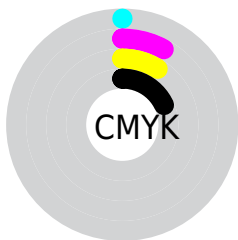
Distribution



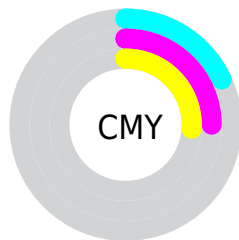
- Red (82%)
- Green (75%)
- Blue (74%)



- Red (82%)
- Yellow (75%)
- Blue (74%)



- Cyan (0%)
- Magenta (8%)
- Yellow (9%)
- Black (18%)



- Cyan (18%)
- Magenta (25%)
- Yellow (26%)

Brightness & Saturation Gradients

These gradients show how the Decimal color 13680573 changes by changing the brightness by 10 percent. The first figure shows a shift by +10% for each color and the second figure -10%.

Similar to the brightness gradients but the following saturation gradients show a change of the Decimal color 13680573 by changing the saturation by 10% instead.

 13680573

 13680573

16777215

 11838626

 16775157

 10128008

 8417390

 6707286

 5128255

 3615273

 2233877

 0

 13680573

 13680573

 13675688

 13685458

 13671059

 13690087

 13666175

 13694971

 13661546

 13697023

 13656661

 13651776

 13647147

 13642263

 13637634

Harmonies

Analogous

The Analogous color harmony consists of three colors that are next to each other on the color wheel.



13615043



13680573



13484217

Triad

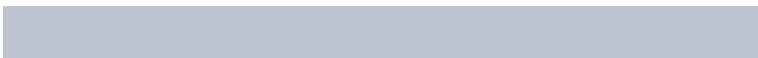
The Triadic color harmony groups three colors that are evenly spaced from another and form a triangle on the color wheel.



13680573



12240572



12436431

Complementary

The Complementary color scheme is a pair of colors which are on the opposite of each other on the color wheel.



13680573



12439248

Split Complementary

Split-complementary colors differ from the complementary color scheme. The scheme consists of three colors, the original color and two neighbors of the complement color.



12043725



13680573



11978434

Square

The Square scheme is like the rectangle color scheme, but the four colors are evenly spaced on the color wheel.



13680573



12698808



11847368



12894669

Rectangle

The Rectangle color scheme consists of four colors that form a rectangle on the color wheel.



13680573



13287863



11847368



12240078

Sweetspot

The Sweet Spot groups the original color and five complimentary colors.



13680573



16775415



13680078



8420218



0



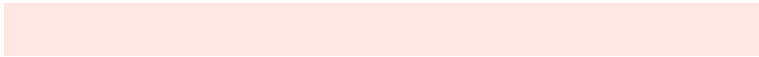
8421504

Same Dimension

The Same Dimension uses a secret algorithm to generate beautiful new colors.



13680573



16770787



13682877



6905694



11014656



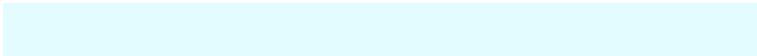
2688000

Inverse Universe

The Inverse Universe completely reimagines the original color for something new.



12439248



14941439



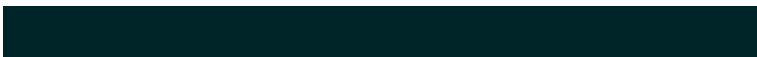
12436944



6186857



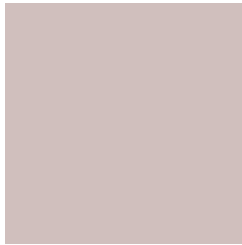
38824



9513

Previews

White Background



This preview shows how the Decimal color 13680573 looks on a white background.

Color Contrast Check

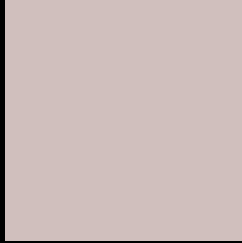
Large Text (above 18pt) WCAG AA × Fail

Any Text WCAG AA × Fail

Large Text (above 18pt) WCAG AAA × Fail

Any Text WCAG AAA × Fail

Black Background



This preview shows how the Decimal color 13680573 looks on a black background.

Color Contrast Check

Large Text (above 18pt) WCAG AA ✓ Pass

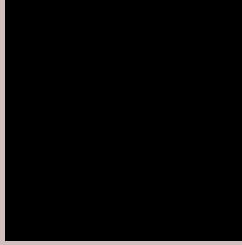
Any Text WCAG AA ✓ Pass

Large Text (above 18pt) WCAG AAA ✓ Pass

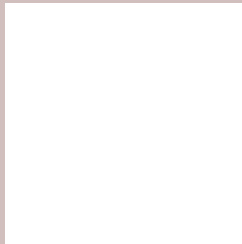
Any Text WCAG AAA ✓ Pass

If you want to check with other color combinations, try the [Color Contrast Checker](#).

Decimal 13680573 Background



This preview shows how black text looks on a background with the Decimal color 13680573.



This preview shows how white text looks on a background with the Decimal color 13680573.

Color Blindness Simulation

Color vision deficiency is a very complex topic, and I could not describe the different causes any better than Wikipedia does, so if you want to learn more, you should check out their [article about color blindness](#).

Dichromacy



Original Color
13680573

Protanopia
13091519

Deuteranopia
14138558



Tritanopia
13811148

Trichromacy



Original Color
13680573

Protanomaly
13287870

Deuteranomaly
13942206

Tritanomaly
13745863

Monochromacy



Original Color
13680573

Achromatopsia
12895428

Achromatomaly
13157057

CSS Examples

Text

The CSS property to change the color of the text to Decimal 13680573 is called "color". The color property can be set on classes, ids or directly on the HTML element.

This example shows how text in the color #D0BFBD looks like.

```
.text, #text, p{  
    color:#D0BFBD  
}
```

If you want to add a text shadow in that color use the text-shadow property, you can generate a text shadow directly with our [CSS Text Shadow Generator](#).

Here you see how black text with a 4 pixel #D0BFBD colored shadow looks like.

```
.shadow{ text-shadow: 4px 4px 2px #D0BFBD
}
```

Border

The CSS property to change the border of an element to Decimal 13680573 is called "border". The border property can be set on classes, ids or directly on the HTML element.

This example shows the color as border, it can be applied via the CSS property "border" or "border-color".

```
.border, #border, table{ border:4px solid
#D0BFBD }
```

If only the border color should be changed use the property `border-color`.

```
.border{ border-color:#D0BFBD }
```

If you want to add a box shadow in that color use:

Here you see how a box with a 4 pixel #D0BFBD colored shadow looks like.

```
.boxshadow{ -moz-box-shadow:4px 4px 4px  
4px #D0BFBD; -webkit-box-shadow:4px 4px  
4px 4px #D0BFBD; box-shadow:4px 4px 4px  
4px #D0BFBD }
```

Background

The CSS property to change the background color of an element to Decimal 13680573 is called "background". The background property can be set on classes, ids or directly on the HTML element.

```
.background, #background, body{  
background:#D0BFBD }
```

If only the background color should be changed can be used:

```
.background{ background-color:#D0BFBD }
```

This example shows the color as background, it is applied via the CSS property "background".

To optimize and compress your CSS code, you can use our [online CSS compressor and optimizer](#) based on csstidy. If you want to create a linear or radial gradient as background or border, check our [CSS Gradient Generator](#).

Hey! You found this booklet interesting? Support Converting Colors with the new Membership Option!

The pro membership hides all ads, plus gives you double the colors in the color bucket, and more awesome pro features!

[Learn more, Memberships starting at \\$2.50/m!](#)

**Follow me
on Twitter!**

@ConvertingColor