

Converting Colors

Decimal(13680828)

Have a look what the booklet for
Decimal(13680828) contains.

Decimal(13680828)	3
<i>Conversions</i>	4
<i>Details</i>	6
<i>Harmonies</i>	11
<i>Previews</i>	23
<i>Color Blindness Simulation</i>	26
<i>CSS Examples</i>	29

Color

Decimal(13680828)

Conversions

Conversions Part 1

Format	Color
Hex	D0C0BC
RGB	208, 192, 188
RGB Percent	82%, 75%, 74%
CMY	0.1843, 0.2471, 0.2627
CMYK	0.00, 0.08, 0.10, 0.18
HSL	12°, 18%, 78%
HSV	12°, 10%, 82%
XYZ	53.9392, 54.7400, 55.2999
YIQ	196.3280, 10.8200, 2.1480

Conversions

Conversions Part 2

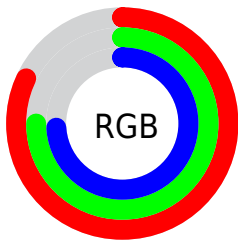
Format	Color
R _Y B	208, 193, 188
Decimal	13680828
CIE Lab	78.89, 4.95, 4.04
CIE LCh	79, 6.384, 39.211
Yxy	54.7400, 0.3289, 0.3338
Android (android.graphics.Color)	4291870908 (0xFFD0C0BC)
YUV	196.3280, -4.1057, 10.2363
Hunter-Lab	73.9865, 0.6574, 7.4753

Details

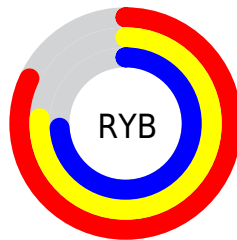
The Decimal color **13680828** is a light color, and the websafe version is hex **CCCCCC**. A complement of this color would be **12373200**, and the grayscale version is **12895428**.

A 20% lighter version of the original color is **16775412**, and **10128263** is the 20% darker color. If you saturate the color by 10%, you get **13676455**, and if you desaturate by 10%, it is **13685201**.

Distribution



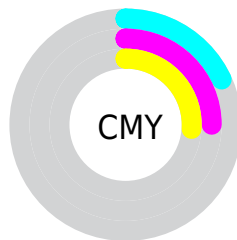
- Red (82%)
- Green (75%)
- Blue (74%)



- Red (82%)
- Yellow (76%)
- Blue (74%)



- Cyan (0%)
- Magenta (8%)
- Yellow (10%)
- Black (18%)



- Cyan (18%)
- Magenta (25%)
- Yellow (26%)

Brightness & Saturation Gradients

These gradients show how the Decimal color 13680828 changes by changing the brightness by 10 percent. The first figure shows a shift by +10% for each color and the second figure -10%.

Similar to the brightness gradients but the following saturation gradients show a change of the Decimal color 13680828 by changing the saturation by 10% instead.

 13680828

 13680828

16777215

 11838881

 16775412

 10128263

 8417646

 6707541

 5128510

 3615528

 2234132

 0

 13680828

 13680828

 13676455

 13685201

 13672338

 13689318

 13667966

 13693690

 13663593

 13697023

 13659476

 13655103

 13650986

 13646614

 13642241

Harmonies

Analogous

The Analogous color harmony consists of three colors that are next to each other on the color wheel.



13680578



13680828



13419192

Triad

The Triadic color harmony groups three colors that are evenly spaced from another and form a triangle on the color wheel.



13680828



12175295



12633039

Complementary

The Complementary color scheme is a pair of colors which are on the opposite of each other on the color wheel.



13680828



12373200

Split Complementary

Split-complementary colors differ from the complementary color scheme. The scheme consists of three colors, the original color and two neighbors of the complement color.



12174798



13680828



11978693

Square

The Square scheme is like the rectangle color scheme, but the four colors are evenly spaced on the color wheel.



13680828



12633530



11912907



13091276

Rectangle

The Rectangle color scheme consists of four colors that form a rectangle on the color wheel.



13680828



13222840



11912907



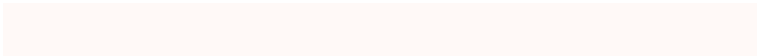
12436687

Sweetspot

The Sweet Spot groups the original color and five complimentary colors.



13680828



16775671



13679820



8420218



0



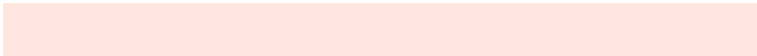
8421504

Same Dimension

The Same Dimension uses a secret algorithm to generate beautiful new colors.



13680828



16771040



13683388



6905950



11018752



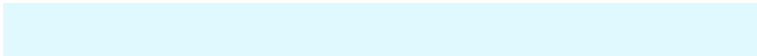
2689024

Inverse Universe

The Inverse Universe completely reimagines the original color for something new.



12373200



14744063



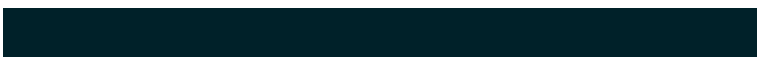
12370640



6186601



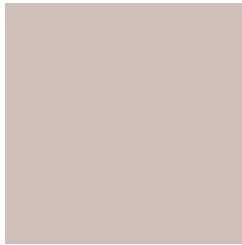
34728



8489

Previews

White Background



This preview shows how the Decimal color 13680828 looks on a white background.

Color Contrast Check

Large Text (above 18pt) WCAG AA × Fail

Any Text WCAG AA × Fail

Large Text (above 18pt) WCAG AAA × Fail

Any Text WCAG AAA × Fail

Black Background



This preview shows how the Decimal color 13680828 looks on a black background.

Color Contrast Check

Large Text (above 18pt) WCAG AA ✓ Pass

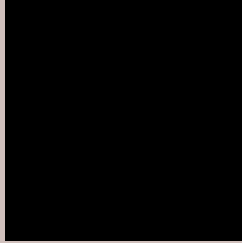
Any Text WCAG AA ✓ Pass

Large Text (above 18pt) WCAG AAA ✓ Pass

Any Text WCAG AAA ✓ Pass

If you want to check with other color combinations, try the [Color Contrast Checker](#).

Decimal 13680828 Background



This preview shows how black text looks on a background with the Decimal color 13680828.



This preview shows how white text looks on a background with the Decimal color 13680828.

Color Blindness Simulation

Color vision deficiency is a very complex topic, and I could not describe the different causes any better than Wikipedia does, so if you want to learn more, you should check out their [article about color blindness](#).


Dichromacy



Original Color
13680828

Protanopia
13157053

Deuteranopia
14269885



Tritanopia
13811148

Trichromacy



Original Color
13680828

Protanomaly
13353405

Deuteranomaly
14073533

Tritanomaly
13745862

Monochromacy



Original Color
13680828

Achromatopsia
12895428

Achromatomaly
13157313

CSS Examples

Text

The CSS property to change the color of the text to Decimal 13680828 is called "color". The color property can be set on classes, ids or directly on the HTML element.

This example shows how text in the color #D0C0BC looks like.

```
.text, #text, p{  
    color:#D0C0BC  
}
```

If you want to add a text shadow in that color use the text-shadow property, you can generate a text shadow directly with our [CSS Text Shadow Generator](#).

Here you see how black text with a 4 pixel #D0C0BC colored shadow looks like.

```
.shadow{ text-shadow: 4px 4px 2px #D0C0BC
}
```

Border

The CSS property to change the border of an element to Decimal 13680828 is called "border". The border property can be set on classes, ids or directly on the HTML element.

This example shows the color as border, it can be applied via the CSS property "border" or "border-color".

```
.border, #border, table{ border:4px solid
#D0C0BC }
```

If only the border color should be changed use the property `border-color`.

```
.border{ border-color:#D0C0BC }
```

If you want to add a box shadow in that color use:

Here you see how a box with a 4 pixel #D0C0BC colored shadow looks like.

```
.boxshadow{ -moz-box-shadow:4px 4px 4px  
4px #D0C0BC; -webkit-box-shadow:4px 4px  
4px 4px #D0C0BC; box-shadow:4px 4px 4px  
4px #D0C0BC }
```

Background

The CSS property to change the background color of an element to Decimal 13680828 is called "background". The background property can be set on classes, ids or directly on the HTML element.

```
.background, #background, body{  
background:#D0C0BC }
```

If only the background color should be changed can be used:

```
.background{ background-color:#D0C0BC }
```

This example shows the color as background, it is applied via the CSS property "background".

To optimize and compress your CSS code, you can use our [online CSS compressor and optimizer](#) based on csstidy. If you want to create a linear or radial gradient as background or border, check our [CSS Gradient Generator](#).

Hey! You found this booklet interesting? Support Converting Colors with the new Membership Option!

The pro membership hides all ads, plus gives you double the colors in the color bucket, and more awesome pro features!

[Learn more, Memberships starting at \\$2.50/m!](#)

**Follow me
on Twitter!**

@ConvertingColor