

Converting Colors

Decimal(13680842)

Have a look what the booklet for
Decimal(13680842) contains.

Decimal(13680842)	3
<i>Conversions</i>	4
<i>Details</i>	6
<i>Harmonies</i>	11
<i>Previews</i>	23
<i>Color Blindness Simulation</i>	26
<i>CSS Examples</i>	29

Color

Decimal(13680842)

Conversions

Conversions Part 1

Format	Color
Hex	D0C0CA
RGB	208, 192, 202
RGB Percent	82%, 75%, 79%
CMY	0.1843, 0.2471, 0.2078
CMYK	0.00, 0.08, 0.03, 0.18
HSL	322°, 15%, 78%
HSV	322°, 8%, 82%
XYZ	55.5227, 55.3734, 63.6389
YIQ	197.9240, 6.3260, 6.5020

Conversions

Conversions Part 2

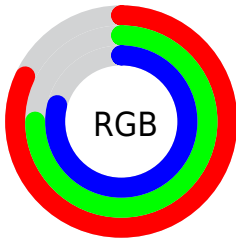
Format	Color
R _Y B	208, 192, 202
Decimal	13680842
CIE Lab	79.26, 7.39, -2.98
CIE LCh	79, 7.967, 338.001
Yxy	55.3734, 0.3181, 0.3173
Android (android.graphics.Color)	4291870922 (0xFFD0C0CA)
YUV	197.9240, 2.0095, 8.8367
Hunter-Lab	74.4133, 2.9626, 1.3840

Details

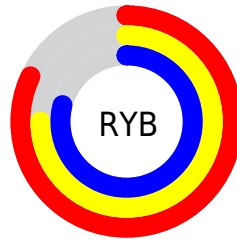
The Decimal color **13680842** is a light color, and the websafe version is hex **CCCCCC**. A complement of this color would be **12636358**, and the grayscale version is **13027014**.

A 20% lighter version of the original color is **16775423**, and **10128276** is the 20% darker color. If you saturate the color by 10%, you get **13675458**, and if you desaturate by 10%, it is **13686226**.

Distribution



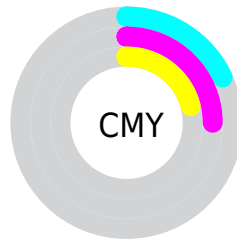
- Red (82%)
- Green (75%)
- Blue (79%)



- Red (82%)
- Yellow (75%)
- Blue (79%)



- Cyan (0%)
- Magenta (8%)
- Yellow (3%)
- Black (18%)



- Cyan (18%)
- Magenta (25%)
- Yellow (21%)

Brightness & Saturation Gradients

These gradients show how the Decimal color 13680842 changes by changing the brightness by 10 percent. The first figure shows a shift by +10% for each color and the second figure -10%.

Similar to the brightness gradients but the following saturation gradients show a change of the Decimal color 13680842 by changing the saturation by 10% instead.

 13680842	 13680842
16777215	 11838895
 16775423	 10128276
	 8417658
	 6773089
	 5128522
	 3681075
	 2234142
	 589828
	 0

 13680842

 13680842

 13675458

 13686226

 13670074

 13691610

 13664947

 13696737

 13659563

 13697001

 13654179

 13697009

 13648795

 13697017

 13643411

 13697023

 13638284

 13632900

Harmonies

Analogous

The Analogous color harmony consists of three colors that are next to each other on the color wheel.



13157072



13680842



13942722

Triad

The Triadic color harmony groups three colors that are evenly spaced from another and form a triangle on the color wheel.



13680842



13223094



11782349

Complementary

The Complementary color scheme is a pair of colors which are on the opposite of each other on the color wheel.



13680842



12636358

Split Complementary

Split-complementary colors differ from the complementary color scheme. The scheme consists of three colors, the original color and two neighbors of the complement color.



11782598



13680842



12634041

Square

The Square scheme is like the rectangle color scheme, but the four colors are evenly spaced on the color wheel.



13680842



13681335



12110015



12044242

Rectangle

The Rectangle color scheme consists of four colors that form a rectangle on the color wheel.



13680842



14008510



12110015



11717067

Sweetspot

The Sweet Spot groups the original color and five complimentary colors.



13680842



16775933



13025488



8420735



0



8421504

Same Dimension

The Same Dimension uses a secret algorithm to generate beautiful new colors.



13680842



16771318



13680834



6905445



11010153



2687002

Inverse Universe

The Inverse Universe completely reimagines the original color for something new.



13680842



16771318



12636366



6905445



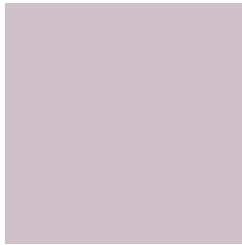
11010153



2687002

Previews

White Background



This preview shows how the Decimal color 13680842 looks on a white background.

Color Contrast Check

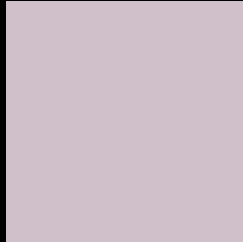
Large Text (above 18pt) WCAG AA × Fail

Any Text WCAG AA × Fail

Large Text (above 18pt) WCAG AAA × Fail

Any Text WCAG AAA × Fail

Black Background



This preview shows how the Decimal color 13680842 looks on a black background.

Color Contrast Check

Large Text (above 18pt) WCAG AA ✓ Pass

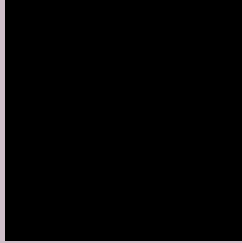
Any Text WCAG AA ✓ Pass

Large Text (above 18pt) WCAG AAA ✓ Pass

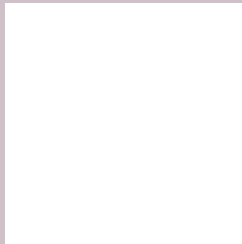
Any Text WCAG AAA ✓ Pass

If you want to check with other color combinations, try the [Color Contrast Checker](#).

Decimal 13680842 Background



This preview shows how black text looks on a background with the Decimal color 13680842.



This preview shows how white text looks on a background with the Decimal color 13680842.

Color Blindness Simulation

Color vision deficiency is a very complex topic, and I could not describe the different causes any better than Wikipedia does, so if you want to learn more, you should check out their [article about color blindness](#).

Dichromacy



Original Color
13680842

Protanopia
13026252

Deuteranopia
14008010



Tritanopia
13746126

Trichromacy



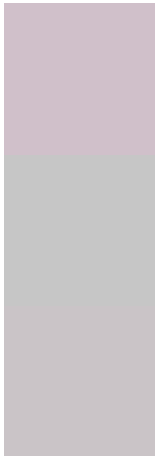
Original Color
13680842

Protanomaly
13288139

Deuteranomaly
13877194

Tritanomaly
13746125

Monochromacy



Original Color
13680842

Achromatopsia
13027014

Achromatomaly
13288647

CSS Examples

Text

The CSS property to change the color of the text to Decimal 13680842 is called "color". The color property can be set on classes, ids or directly on the HTML element.

This example shows how text in the color #D0C0CA looks like.

```
.text, #text, p{  
  color:#D0C0CA  
}
```

If you want to add a text shadow in that color use the text-shadow property, you can generate a text shadow directly with our [CSS Text Shadow Generator](#).

Here you see how black text with a 4 pixel #D0C0CA colored shadow looks like.

```
.shadow{ text-shadow: 4px 4px 2px #D0C0CA
}
```

Border

The CSS property to change the border of an element to Decimal 13680842 is called "border". The border property can be set on classes, ids or directly on the HTML element.

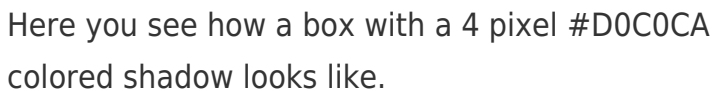
This example shows the color as border, it can be applied via the CSS property "border" or "border-color".

```
.border, #border, table{ border:4px solid
#D0C0CA }
```

If only the border color should be changed use the property `border-color`.

```
.border{ border-color:#D0C0CA }
```

If you want to add a box shadow in that color use:



Here you see how a box with a 4 pixel #D0C0CA colored shadow looks like.

```
.boxshadow{ -moz-box-shadow:4px 4px 4px  
4px #D0C0CA; -webkit-box-shadow:4px 4px  
4px 4px #D0C0CA; box-shadow:4px 4px 4px  
4px #D0C0CA }
```

Background

The CSS property to change the background color of an element to Decimal 13680842 is called "background". The background property can be set on classes, ids or directly on the HTML element.

```
.background, #background, body{  
background:#D0C0CA }
```

If only the background color should be changed can be used:

```
.background{ background-color:#D0C0CA }
```

This example shows the color as background, it is applied via the CSS property "background".

To optimize and compress your CSS code, you can use our [online CSS compressor and optimizer](#) based on csstidy. If you want to create a linear or radial gradient as background or border, check our [CSS Gradient Generator](#).

Hey! You found this booklet interesting? Support Converting Colors with the new Membership Option!

The pro membership hides all ads, plus gives you double the colors in the color bucket, and more awesome pro features!

[Learn more, Memberships starting at \\$2.50/m!](#)

**Follow me
on Twitter!**

@ConvertingColor