

Converting Colors

Decimal(13717897)

Have a look what the booklet for
Decimal(13717897) contains.

Decimal(13717897)	3
<i>Conversions</i>	4
<i>Details</i>	6
<i>Harmonies</i>	11
<i>Previews</i>	23
<i>Color Blindness Simulation</i>	26
<i>CSS Examples</i>	29

Color

Decimal(13717897)

Conversions

Conversions Part 1

Format	Color
Hex	D15189
RGB	209, 81, 137
RGB Percent	82%, 32%, 54%
CMY	0.1804, 0.6824, 0.4627
CMYK	0.00, 0.61, 0.34, 0.18
HSL	334°, 58%, 57%
HSV	334°, 61%, 82%
XYZ	33.7523, 21.2463, 25.9889
YIQ	125.6560, 58.3120, 44.5520

Conversions

Conversions Part 2

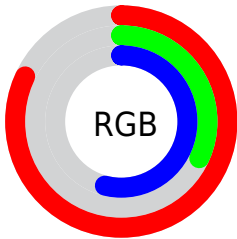
Format	Color
R_{YB}	209, 81, 137
Decimal	13717897
CIE _{Lab}	53.22, 55.72, -4.72
CIE _{LCh}	53, 55.918, 355.157
Yxy	21.2463, 0.4168, 0.2623
Android (android.graphics.Color)	4291907977 (0xFFD15189)
YUV	125.6560, 5.5926, 73.0927
Hunter-Lab	46.0937, 50.0432, -1.1637

Details

The Decimal color **13717897** is a dark color, and the websafe version is hex **CC6699**. The color can be described as middle muted rose. A complement of this color would be **5362073**, and the grayscale version is **8289918**.

A 20% lighter version of the original color is **16746686**, and **9900375** is the 20% darker color. If you saturate the color by 10%, you get **13712509**, and if you desaturate by 10%, it is **13723285**.

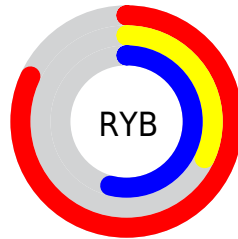
Distribution



Red (82%)

Green (32%)

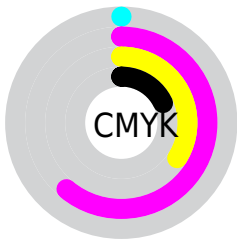
Blue (54%)



Red (82%)

Yellow (32%)

Blue (54%)

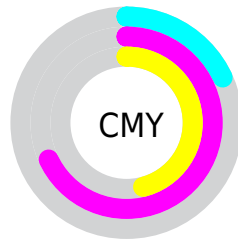


Cyan (0%)

Magenta (61%)

Yellow (34%)

Black (18%)



Cyan (18%)

Magenta (68%)

Yellow (46%)

Brightness & Saturation Gradients

These gradients show how the Decimal color 13717897 changes by changing the brightness by 10 percent. The first figure shows a shift by +10% for each color and the second figure -10%.

Similar to the brightness gradients but the following saturation gradients show a change of the Decimal color 13717897 by changing the saturation by 10% instead.

 13717897

 13717897

16777215

 11809904

 16746686

 9900375

 16753882

 7995456

 16761335

 6160426

 16768767

 4390934

 16776191

 2621441

 0

 13717897

 13717897

 13712509

 13723285

 13707121

 13728673

 13701734

 13734060

 13697115

 13739448

 13744836

 13749968

 13755355

 13760743

 13762547

Harmonies

Analogous

The Analogous color harmony consists of three colors that are next to each other on the color wheel.



11690167



13717897



13915481

Triad

The Triadic color harmony groups three colors that are evenly spaced from another and form a triangle on the color wheel.



13717897



7374877



37325

Complementary

The Complementary color scheme is a pair of colors which are on the opposite of each other on the color wheel.



13717897



5362073

Split Complementary

Split-complementary colors differ from the complementary color scheme. The scheme consists of three colors, the original color and two neighbors of the complement color.



38567



13717897



2855237

Square

The Square scheme is like the rectangle color scheme, but the four colors are evenly spaced on the color wheel.



13717897



10385937



38261



34783

Rectangle

The Rectangle color scheme consists of four colors that form a rectangle on the color wheel.



13717897



13262908



38261



37826

Sweetspot

The Sweet Spot groups the original color and five complimentary colors.



13717897



16765413



9916881



8414064



0



8421504

Same Dimension

The Same Dimension uses a secret algorithm to generate beautiful new colors.



13717897



16729494



13719377



6905443



11010122



2686994

Inverse Universe

The Inverse Universe completely reimagines the original color for something new.



13717897



16729494



5360593



6905443



11010122



2686994

Previews

White Background



This preview shows how the Decimal color 13717897 looks on a white background.

Color Contrast Check

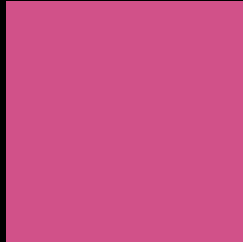
Large Text (above 18pt) WCAG AA ✓ Pass

Any Text WCAG AA × Fail

Large Text (above 18pt) WCAG AAA × Fail

Any Text WCAG AAA × Fail

Black Background



This preview shows how the Decimal color 13717897 looks on a black background.

Color Contrast Check

Large Text (above 18pt) WCAG AA ✓ Pass

Any Text WCAG AA ✓ Pass

Large Text (above 18pt) WCAG AAA ✓ Pass

Any Text WCAG AAA × Fail

If you want to check with other color combinations, try the [Color Contrast Checker](#).

Decimal 13717897 Background



This preview shows how black text looks on a background with the Decimal color 13717897.




This preview shows how white text looks on a background with the Decimal color 13717897.

Color Blindness Simulation

Color vision deficiency is a very complex topic, and I could not describe the different causes any better than Wikipedia does, so if you want to learn more, you should check out their [article about color blindness](#).

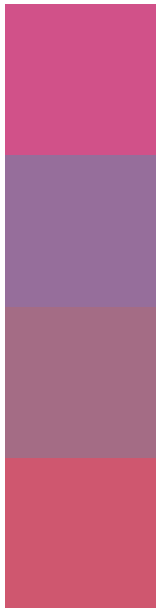
Dichromacy





Tritanopia
13523552

Trichromacy



Original Color
13717897

Protanomaly
9858715

Deuteranomaly
10775685

Tritanomaly
13588335

Monochromacy



Original Color
13717897

Achromatopsia
8289918

Achromatomaly
10251906

CSS Examples

Text

The CSS property to change the color of the text to Decimal 13717897 is called "color". The color property can be set on classes, ids or directly on the HTML element.

This example shows how text in the color #D15189 looks like.

```
.text, #text, p{  
    color:#D15189  
}
```

If you want to add a text shadow in that color use the text-shadow property, you can generate a text shadow directly with our [CSS Text Shadow Generator](#).

Here you see how black text with a 4 pixel #D15189 colored shadow looks like.

```
.shadow{ text-shadow: 4px 4px 2px #D15189
}
```

Border

The CSS property to change the border of an element to Decimal 13717897 is called "border". The border property can be set on classes, ids or directly on the HTML element.

This example shows the color as border, it can be applied via the CSS property "border" or "border-color".

```
.border, #border, table{ border:4px solid
#D15189 }
```

If only the border color should be changed use the property border-color.

```
.border{ border-color:#D15189 }
```

If you want to add a box shadow in that color use:

Here you see how a box with a 4 pixel #D15189 colored shadow looks like.

```
.boxshadow{ -moz-box-shadow:4px 4px 4px  
4px #D15189; -webkit-box-shadow:4px 4px  
4px 4px #D15189; box-shadow:4px 4px 4px  
4px #D15189 }
```

Background

The CSS property to change the background color of an element to Decimal 13717897 is called "background". The background property can be set on classes, ids or directly on the HTML element.

```
.background, #background, body{  
background:#D15189 }
```

If only the background color should be changed can be used:

```
.background{ background-color:#D15189 }
```

This example shows the color as background, it is applied via the CSS property "background".

To optimize and compress your CSS code, you can use our [online CSS compressor and optimizer](#) based on csstidy. If you want to create a linear or radial gradient as background or border, check our [CSS Gradient Generator](#).

Hey! You found this booklet interesting? Support Converting Colors with the new Membership Option!

The pro membership hides all ads, plus gives you double the colors in the color bucket, and more awesome pro features!

[Learn more, Memberships starting at \\$2.50/m!](#)

**Follow me
on Twitter!**

@ConvertingColor