

Converting Colors

Decimal(13719180)

Have a look what the booklet for
Decimal(13719180) contains.

Decimal(13719180)	3
<i>Conversions</i>	4
<i>Details</i>	6
<i>Harmonies</i>	11
<i>Previews</i>	23
<i>Color Blindness Simulation</i>	26
<i>CSS Examples</i>	29

Color

Decimal(13719180)

Conversions

Conversions Part 1

Format	Color
Hex	D1568C
RGB	209, 86, 140
RGB Percent	82%, 34%, 55%
CMY	0.1804, 0.6627, 0.4510
CMYK	0.00, 0.59, 0.33, 0.18
HSL	334°, 57%, 58%
HSV	334°, 59%, 82%
XYZ	34.3559, 22.1043, 27.2667
YIQ	128.9330, 55.9740, 42.8700

Conversions

Conversions Part 2

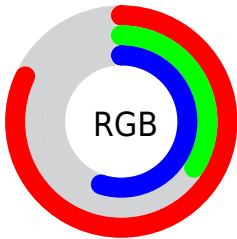
Format	Color
R _Y B	209, 86, 140
Decimal	13719180
CIE Lab	54.14, 53.85, -5.14
CIE LCh	54, 54.098, 354.552
Yxy	22.1043, 0.4103, 0.2640
Android (android.graphics.Color)	4291909260 (0xFFD1568C)
YUV	128.9330, 5.4560, 70.2188
Hunter-Lab	47.0152, 48.1603, -1.4749

Details

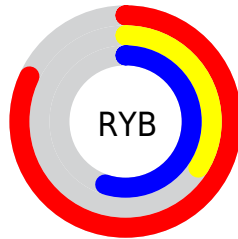
The Decimal color **13719180** is a dark color, and the websafe version is hex **CC6699**. The color can be described as middle muted rose. A complement of this color would be **5689755**, and the grayscale version is **8487297**.

A 20% lighter version of the original color is **16747969**, and **9902938** is the 20% darker color. If you saturate the color by 10%, you get **13713792**, and if you desaturate by 10%, it is **13724568**.

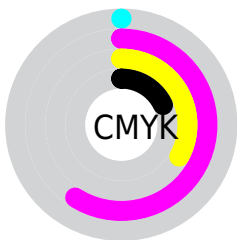
Distribution



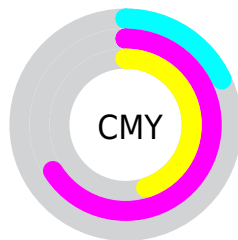
- Red (82%)
- Green (34%)
- Blue (55%)



- Red (82%)
- Yellow (34%)
- Blue (55%)



- Cyan (0%)
- Magenta (59%)
- Yellow (33%)
- Black (18%)



- Cyan (18%)
- Magenta (66%)
- Yellow (45%)

Brightness & Saturation Gradients

These gradients show how the Decimal color 13719180 changes by changing the brightness by 10 percent. The first figure shows a shift by +10% for each color and the second figure -10%.

Similar to the brightness gradients but the following saturation gradients show a change of the Decimal color 13719180 by changing the saturation by 10% instead.

 13719180

 13719180

16777215

 11811443

 16747969

 9902938

 16755165

 7995459

 16762362

 6225965

 16769791

 4456472

 2686977

 0

 13719180

 13719180

 13713792

 13724568

 13708405

 13729955

 13703017

 13735343

 13697629

 13740731

 13697116

 13746119

 13751250

 13756638

 13762026

 13762550

Harmonies

Analogous

The Analogous color harmony consists of three colors that are next to each other on the color wheel.



11691192



13719180



13982045

Triad

The Triadic color harmony groups three colors that are evenly spaced from another and form a triangle on the color wheel.



13719180



7637540



37837

Complementary

The Complementary color scheme is a pair of colors which are on the opposite of each other on the color wheel.



13719180



5689755

Split Complementary

Split-complementary colors differ from the complementary color scheme. The scheme consists of three colors, the original color and two neighbors of the complement color.



39079



13719180



3511112

Square

The Square scheme is like the rectangle color scheme, but the four colors are evenly spaced on the color wheel.



13719180



10583066



38775



35294

Rectangle

The Rectangle color scheme consists of four colors that form a rectangle on the color wheel.



13719180



13329218



38775



38338

Sweetspot

The Sweet Spot groups the original color and five complimentary colors.



13719180



16765413



10114769



8414064



0



8421504

Same Dimension

The Same Dimension uses a secret algorithm to generate beautiful new colors.



13719180



16730777



13720662



6905443



11010122



2686994

Inverse Universe

The Inverse Universe completely reimagines the original color for something new.



13719180



16730777



5688273



6905443



11010122



2686994

Previews

White Background



This preview shows how the Decimal color 13719180 looks on a white background.

Color Contrast Check

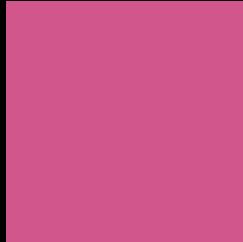
Large Text (above 18pt) WCAG AA ✓ Pass

Any Text WCAG AA ✗ Fail

Large Text (above 18pt) WCAG AAA ✗ Fail

Any Text WCAG AAA ✗ Fail

Black Background



This preview shows how the Decimal color 13719180 looks on a black background.

Color Contrast Check

Large Text (above 18pt) WCAG AA ✓ Pass

Any Text WCAG AA ✓ Pass

Large Text (above 18pt) WCAG AAA ✓ Pass

Any Text WCAG AAA × Fail

If you want to check with other color combinations, try the [Color Contrast Checker](#).

Decimal 13719180 Background



This preview shows how black text looks on a background with the Decimal color 13719180.



This preview shows how white text looks on a background with the Decimal color 13719180.

Color Blindness Simulation

Color vision deficiency is a very complex topic, and I could not describe the different causes any better than Wikipedia does, so if you want to learn more, you should check out their [article about color blindness](#).


Dichromacy



Original Color
13719180

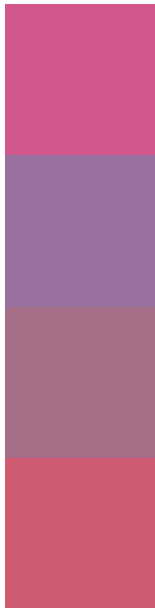
Protanopia
7897512

Deuteranopia
9272966



Tritanopia
13524581

Trichromacy



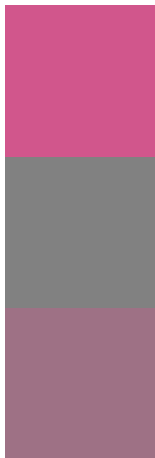
Original Color
13719180

Protanomaly
9990558

Deuteranomaly
10907528

Tritanomaly
13589363

Monochromacy



Original Color
13719180

Achromatopsia
8487297

Achromatomaly
10383749

CSS Examples

Text

The CSS property to change the color of the text to Decimal 13719180 is called "color". The color property can be set on classes, ids or directly on the HTML element.

This example shows how text in the color #D1568C looks like.

```
.text, #text, p{  
  color:#D1568C  
}
```

If you want to add a text shadow in that color use the text-shadow property, you can generate a text shadow directly with our [CSS Text Shadow Generator](#).

Here you see how black text with a 4 pixel #D1568C colored shadow looks like.

```
.shadow{ text-shadow: 4px 4px 2px #D1568C
}
```

Border

The CSS property to change the border of an element to Decimal 13719180 is called "border". The border property can be set on classes, ids or directly on the HTML element.

This example shows the color as border, it can be applied via the CSS property "border" or "border-color".

```
.border, #border, table{ border:4px solid
#D1568C }
```

If only the border color should be changed use the property `border-color`.

```
.border{ border-color:#D1568C }
```

If you want to add a box shadow in that color use:

Here you see how a box with a 4 pixel #D1568C colored shadow looks like.

```
.boxshadow{ -moz-box-shadow:4px 4px 4px  
4px #D1568C; -webkit-box-shadow:4px 4px  
4px 4px #D1568C; box-shadow:4px 4px 4px  
4px #D1568C }
```

Background

The CSS property to change the background color of an element to Decimal 13719180 is called "background". The background property can be set on classes, ids or directly on the HTML element.

```
.background, #background, body{  
background:#D1568C }
```

If only the background color should be changed can be used:

```
.background{ background-color:#D1568C }
```

This example shows the color as background, it is applied via the CSS property "background".

To optimize and compress your CSS code, you can use our [online CSS compressor and optimizer](#) based on csstidy. If you want to create a linear or radial gradient as background or border, check our [CSS Gradient Generator](#).

Hey! You found this booklet interesting? Support Converting Colors with the new Membership Option!

The pro membership hides all ads, plus gives you double the colors in the color bucket, and more awesome pro features!

[Learn more, Memberships starting at \\$2.50/m!](#)

**Follow me
on Twitter!**

@ConvertingColor