

# Converting Colors

Decimal(13734006)

Have a look what the booklet for  
Decimal(13734006) contains.

<b>Decimal(13734006)</b> .....	3
<i><b>Conversions</b></i> .....	4
<i><b>Details</b></i> .....	6
<i><b>Harmonies</b></i> .....	11
<i><b>Previews</b></i> .....	23
<i><b>Color Blindness Simulation</b></i> .....	26
<i><b>CSS Examples</b></i> .....	29

# **Color**

**Decimal(13734006)**

# Conversions

## Conversions Part 1

<b>Format</b>	<b>Color</b>
Hex	D19076
RGB	209, 144, 118
RGB Percent	82%, 56%, 46%
CMY	0.1804, 0.4353, 0.5373
CMYK	0.00, 0.31, 0.44, 0.18
HSL	17°, 50%, 64%
HSV	17°, 44%, 82%
XYZ	39.5378, 34.8098, 21.7746
YIQ	160.4710, 47.0860, 5.6940

# Conversions

## Conversions Part 2

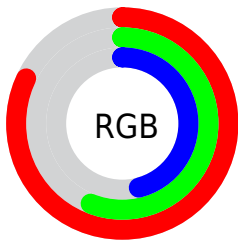
<b>Format</b>	<b>Color</b>
<b>R<sub>YB</sub></b>	209, 154, 118
Decimal	13734006
CIE <sub>Lab</sub>	65.60, 21.52, 23.73
CIE <sub>LCh</sub>	66, 32.037, 47.800
Yxy	34.8098, 0.4113, 0.3621
Android (android.graphics.Color)	4291924086 (0xFFD19076)
YUV	160.4710, -20.9382, 42.5599
Hunter-Lab	58.9999, 16.3690, 19.4182

# Details

The Decimal color **13734006** is a light color, and the websafe version is hex **CC9966**. A complement of this color would be **7780305**, and the grayscale version is **10592673**.

A 20% lighter version of the original color is **16762538**, and **9985349** is the 20% darker color. If you saturate the color by 10%, you get **13730145**, and if you desaturate by 10%, it is **13737867**.

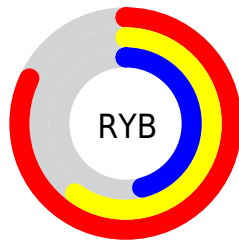
# Distribution



Red (82%)

Green (56%)

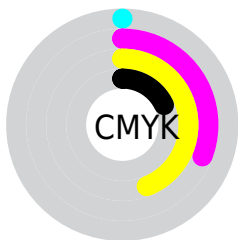
Blue (46%)



Red (82%)

Yellow (60%)

Blue (46%)

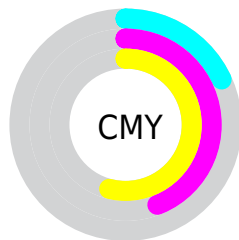


Cyan (0%)

Magenta (31%)

Yellow (44%)

Black (18%)



Cyan (18%)

Magenta (44%)

Yellow (54%)

# Brightness & Saturation Gradients

These gradients show how the Decimal color 13734006 changes by changing the brightness by 10 percent. The first figure shows a shift by +10% for each color and the second figure -10%.

Similar to the brightness gradients but the following saturation gradients show a change of the Decimal color 13734006 by changing the saturation by 10% instead.



 13734006

 13734006

16777215

 11826781

 16762538

 9985349

 16769734

 8209711

 16777186

 6434329

16777214

 4724736

 3015168

 458752

 0

 13734006

 13734006

 13730145

 13737867

 13726284

 13741728

 13722423

 13745589

 13718562

 13749450

 13714702

 13753311

 13712384

 13757171

 13761023

 13762559

# Harmonies

## Analogous

The Analogous color harmony consists of three colors that are next to each other on the color wheel.



14191247



13734006



12425831

# Triad

The Triadic color harmony groups three colors that are evenly spaced from another and form a triangle on the color wheel.



13734006



6205074



9608406

# Complementary

The Complementary color scheme is a pair of colors which are on the opposite of each other on the color wheel.



13734006



7780305

# Split Complementary

Split-complementary colors differ from the complementary color scheme. The scheme consists of three colors, the original color and two neighbors of the complement color.



6661847



13734006



4173744

# Square

The Square scheme is like the rectangle color scheme, but the four colors are evenly spaced on the color wheel.



13734006



8497784



4173001



12096198

# Rectangle

The Rectangle color scheme consists of four colors that form a rectangle on the color wheel.



13734006



11313254



4173001



8691928

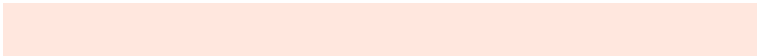


# Sweetspot

The Sweet Spot groups the original color and five complimentary colors.



13734006



16771038



13727415



8417643



0



8421504



# Same Dimension

The Same Dimension uses a secret algorithm to generate beautiful new colors.



13734006



16752762



13745526



6906206



11022336



2690048

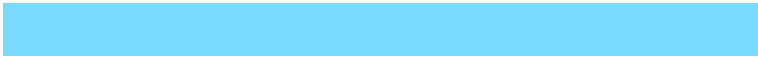


# Inverse Universe

The Inverse Universe completely reimagines the original color for something new.



7780305



8051199



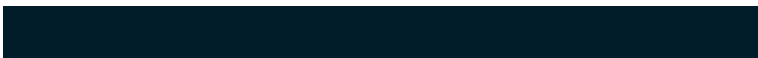
7768785



6186601



30888



7465



# Previews

## White Background



This preview shows how the Decimal color 13734006 looks on a white background.

## Color Contrast Check

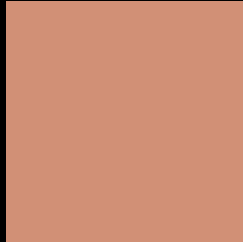
Large Text (above 18pt) WCAG AA × Fail

Any Text WCAG AA × Fail

Large Text (above 18pt) WCAG AAA × Fail

Any Text WCAG AAA × Fail

# Black Background



This preview shows how the Decimal color 13734006 looks on a black background.

## Color Contrast Check

Large Text (above 18pt) WCAG AA ✓ Pass

Any Text WCAG AA ✓ Pass

Large Text (above 18pt) WCAG AAA ✓ Pass

Any Text WCAG AAA ✓ Pass

If you want to check with other color combinations, try the [Color Contrast Checker](#).



## Decimal 13734006 Background



This preview shows how black text looks on a background with the Decimal color 13734006.




This preview shows how white text looks on a background with the Decimal color 13734006.

# Color Blindness Simulation

Color vision deficiency is a very complex topic, and I could not describe the different causes any better than Wikipedia does, so if you want to learn more, you should check out their [article about color blindness](#).

## Dichromacy





**Tritanopia**  
13929622

# Trichromacy



**Original Color**  
13734006

**Protanomaly**  
12098170

**Deuteranomaly**  
12883573

**Tritanomaly**  
13864330

# Monochromacy



**Original Color**  
13734006

**Achromatopsia**  
10526880

**Achromatomaly**  
11704977

# CSS Examples

## Text

The CSS property to change the color of the text to Decimal 13734006 is called "color". The color property can be set on classes, ids or directly on the HTML element.

This example shows how text in the color #D19076 looks like.

```
.text, #text, p{  
  color:#D19076  
}
```

If you want to add a text shadow in that color use the text-shadow property, you can generate a text shadow directly with our [CSS Text Shadow Generator](#).

Here you see how black text with a 4 pixel #D19076 colored shadow looks like.

```
.shadow{ text-shadow: 4px 4px 2px #D19076
}
```

## Border

The CSS property to change the border of an element to Decimal 13734006 is called "border". The border property can be set on classes, ids or directly on the HTML element.

This example shows the color as border, it can be applied via the CSS property "border" or "border-color".

```
.border, #border, table{ border:4px solid
#D19076 }
```

If only the border color should be changed use the property `border-color`.

```
.border{ border-color:#D19076 }
```

If you want to add a box shadow in that color use:

Here you see how a box with a 4 pixel #D19076 colored shadow looks like.

```
.boxshadow{ -moz-box-shadow:4px 4px 4px  
4px #D19076; -webkit-box-shadow:4px 4px  
4px 4px #D19076; box-shadow:4px 4px 4px  
4px #D19076 }
```

# Background

The CSS property to change the background color of an element to Decimal 13734006 is called "background". The background property can be set on classes, ids or directly on the HTML element.

```
.background, #background, body{  
background:#D19076 }
```

If only the background color should be changed can be used:

```
.background{ background-color:#D19076 }
```

This example shows the color as background, it is applied via the CSS property "background".

To optimize and compress your CSS code, you can use our [online CSS compressor and optimizer](#) based on csstidy. If you want to create a linear or radial gradient as background or border, check our [CSS Gradient Generator](#).



Hey! You found this booklet interesting? Support Converting Colors with the new Membership Option!

The pro membership hides all ads, plus gives you double the colors in the color bucket, and more awesome pro features!

**[Learn more, Memberships starting at \\$2.50/m!](#)**

**Follow me  
on Twitter!**

@ConvertingColor