

# Converting Colors

Decimal(13735060)

Have a look what the booklet for  
Decimal(13735060) contains.

<b>Decimal(13735060)</b> .....	3
<i><b>Conversions</b></i> .....	4
<i><b>Details</b></i> .....	6
<i><b>Harmonies</b></i> .....	11
<i><b>Previews</b></i> .....	23
<i><b>Color Blindness Simulation</b></i> .....	26
<i><b>CSS Examples</b></i> .....	29

# **Color**

**Decimal(13735060)**

# Conversions

## Conversions Part 1

<b>Format</b>	<b>Color</b>
Hex	D19494
RGB	209, 148, 148
RGB Percent	82%, 58%, 58%
CMY	0.1804, 0.4196, 0.4196
CMYK	0.00, 0.29, 0.29, 0.18
HSL	0°, 40%, 70%
HSV	0°, 29%, 82%
XYZ	42.2297, 36.8732, 32.9085
YIQ	166.2390, 36.3560, 12.9320

# Conversions

## Conversions Part 2

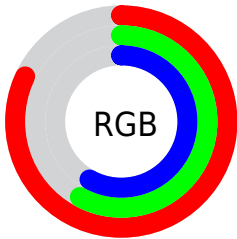
<b>Format</b>	<b>Color</b>
R <sub>YB</sub>	209, 148, 148
Decimal	13735060
CIE Lab	67.18, 22.99, 9.20
CIE LCh	67, 24.761, 21.808
Yxy	36.8732, 0.3770, 0.3292
Android (android.graphics.Color)	4291925140 (0xFFD19494)
YUV	166.2390, -8.9918, 37.5014
Hunter-Lab	60.7233, 17.8710, 10.3746

# Details

The Decimal color **13735060** is a light color, and the websafe version is hex **CC9999**. A complement of this color would be **9753041**, and the grayscale version is **10921638**.

A 20% lighter version of the original color is **16763594**, and **10051937** is the 20% darker color. If you saturate the color by 10%, you get **13729663**, and if you desaturate by 10%, it is **13740457**.

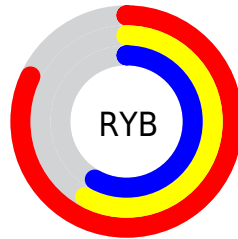
# Distribution



Red (82%)

Green (58%)

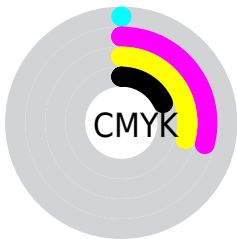
Blue (58%)



Red (82%)

Yellow (58%)

Blue (58%)

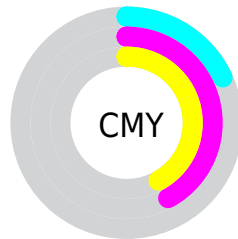


Cyan (0%)

Magenta (29%)

Yellow (29%)

Black (18%)



Cyan (18%)

Magenta (42%)

Yellow (42%)

# Brightness & Saturation Gradients

These gradients show how the Decimal color 13735060 changes by changing the brightness by 10 percent. The first figure shows a shift by +10% for each color and the second figure -10%.

Similar to the brightness gradients but the following saturation gradients show a change of the Decimal color 13735060 by changing the saturation by 10% instead.



 13735060

 13735060

16777215

 11893370

 16763594

 10051937

 16771046

 8276298

 6566195

 4856606

 3277829

 1507328

 0

 13735060

 13735060

 13729663

 13740457

 13724266

 13745854

 13718869

 13751251

 13713472

 13756648

 13708332

 13762045

 13702935

 13762559

 13697538

 13697024

# Harmonies

## Analogous

The Analogous color harmony consists of three colors that are next to each other on the color wheel.



13407403



13735060



13277569

# Triad

The Triadic color harmony groups three colors that are evenly spaced from another and form a triangle on the color wheel.



13735060



9022855



8431567

# Complementary

The Complementary color scheme is a pair of colors which are on the opposite of each other on the color wheel.



13735060



9753041

# Split Complementary

Split-complementary colors differ from the complementary color scheme. The scheme consists of three colors, the original color and two neighbors of the complement color.



6794694



13735060



7450780

# Square

The Square scheme is like the rectangle color scheme, but the four colors are evenly spaced on the color wheel.



13735060



10725242



6467763



10461389

# Rectangle

The Rectangle color scheme consists of four colors that form a rectangle on the color wheel.



13735060



12623226



6467763



7776973

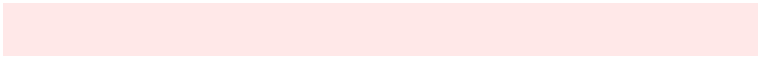


# Sweetspot

The Sweet Spot groups the original color and five complimentary colors.



13735060



16771304



13735121



8417649



0



8421504



# Same Dimension

The Same Dimension uses a secret algorithm to generate beautiful new colors.



13735060



16754342



13742996



6905438



11010048



2686976



# Inverse Universe

The Inverse Universe completely reimagines the original color for something new.



9753041



10944511



9745361



6187369



43176

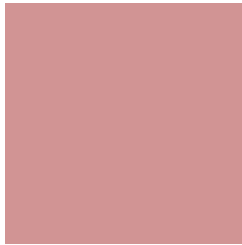


10537



# Previews

## White Background



This preview shows how the Decimal color 13735060 looks on a white background.

## Color Contrast Check

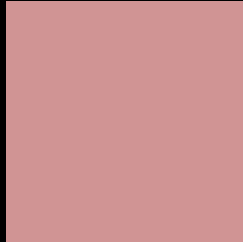
Large Text (above 18pt) WCAG AA × Fail

Any Text WCAG AA × Fail

Large Text (above 18pt) WCAG AAA × Fail

Any Text WCAG AAA × Fail

# Black Background



This preview shows how the Decimal color 13735060 looks on a black background.

## Color Contrast Check

Large Text (above 18pt) WCAG AA ✓ Pass

Any Text WCAG AA ✓ Pass

Large Text (above 18pt) WCAG AAA ✓ Pass

Any Text WCAG AAA ✓ Pass

If you want to check with other color combinations, try the [Color Contrast Checker](#).



## Decimal 13735060 Background



This preview shows how black text looks on a background with the Decimal color 13735060.




This preview shows how white text looks on a background with the Decimal color 13735060.

# Color Blindness Simulation

Color vision deficiency is a very complex topic, and I could not describe the different causes any better than Wikipedia does, so if you want to learn more, you should check out their [article about color blindness](#).

## Dichromacy





**Tritanopia**  
13800094

# Trichromacy



**Original Color**  
13735060

**Protanomaly**  
12099225

**Deuteranomaly**  
12753555

**Tritanomaly**  
13800346

# Monochromacy



**Original Color**  
13735060

**Achromatopsia**  
10921638

**Achromatomaly**  
11968415

# CSS Examples

## Text

The CSS property to change the color of the text to Decimal 13735060 is called "color". The color property can be set on classes, ids or directly on the HTML element.

This example shows how text in the color #D19494 looks like.

```
.text, #text, p{  
  color:#D19494  
}
```

If you want to add a text shadow in that color use the text-shadow property, you can generate a text shadow directly with our [CSS Text Shadow Generator](#).

Here you see how black text with a 4 pixel #D19494 colored shadow looks like.

```
.shadow{ text-shadow: 4px 4px 2px #D19494
}
```

## Border

The CSS property to change the border of an element to Decimal 13735060 is called "border". The border property can be set on classes, ids or directly on the HTML element.

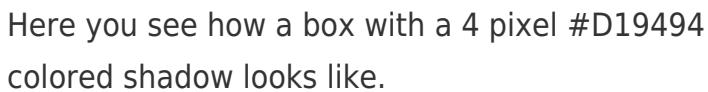
This example shows the color as border, it can be applied via the CSS property "border" or "border-color".

```
.border, #border, table{ border:4px solid
#D19494 }
```

If only the border color should be changed use the property `border-color`.

```
.border{ border-color:#D19494 }
```

If you want to add a box shadow in that color use:



Here you see how a box with a 4 pixel #D19494 colored shadow looks like.

```
.boxshadow{ -moz-box-shadow:4px 4px 4px  
4px #D19494; -webkit-box-shadow:4px 4px  
4px 4px #D19494; box-shadow:4px 4px 4px  
4px #D19494 }
```

# Background

The CSS property to change the background color of an element to Decimal 13735060 is called "background". The background property can be set on classes, ids or directly on the HTML element.

```
.background, #background, body{  
background:#D19494 }
```

If only the background color should be changed can be used:

```
.background{ background-color:#D19494 }
```

This example shows the color as background, it is applied via the CSS property "background".

To optimize and compress your CSS code, you can use our [online CSS compressor and optimizer](#) based on csstidy. If you want to create a linear or radial gradient as background or border, check our [CSS Gradient Generator](#).



Hey! You found this booklet interesting? Support Converting Colors with the new Membership Option!

The pro membership hides all ads, plus gives you double the colors in the color bucket, and more awesome pro features!

**[Learn more, Memberships starting at \\$2.50/m!](#)**

**Follow me  
on Twitter!**

@ConvertingColor