

Converting Colors

Decimal(13735291)

Have a look what the booklet for
Decimal(13735291) contains.

Decimal(13735291)	3
<i>Conversions</i>	4
<i>Details</i>	6
<i>Harmonies</i>	11
<i>Previews</i>	23
<i>Color Blindness Simulation</i>	26
<i>CSS Examples</i>	29

Color

Decimal(13735291)

Conversions

Conversions Part 1

Format	Color
Hex	D1957B
RGB	209, 149, 123
RGB Percent	82%, 58%, 48%
CMY	0.1804, 0.4157, 0.5176
CMYK	0.00, 0.29, 0.41, 0.18
HSL	18°, 48%, 65%
HSV	18°, 41%, 82%
XYZ	40.6171, 36.4803, 23.6395
YIQ	163.9760, 44.1060, 4.6340

Conversions

Conversions Part 2

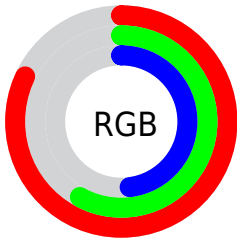
Format	Color
RYB	209, 160, 123
Decimal	13735291
CIELab	66.89, 19.35, 22.70
CIElCh	67, 29.827, 49.559
Yxy	36.4803, 0.4032, 0.3621
Android (android.graphics.Color)	4291925371 (0xFFD1957B)
YUV	163.9760, -20.2012, 39.4860
Hunter-Lab	60.3989, 14.3398, 19.0737

Details

The Decimal color **13735291** is a light color, and the websafe version is hex **CC9966**. A complement of this color would be **8107985**, and the grayscale version is **10790052**.

A 20% lighter version of the original color is **16763824**, and **9986634** is the 20% darker color. If you saturate the color by 10%, you get **13731430**, and if you desaturate by 10%, it is **13739152**.

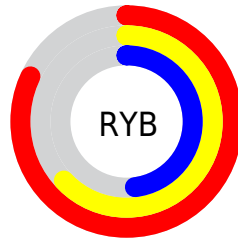
Distribution



Red (82%)

Green (58%)

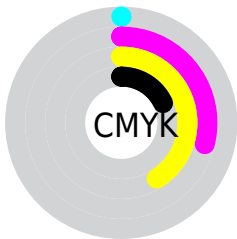
Blue (48%)



Red (82%)

Yellow (63%)

Blue (48%)

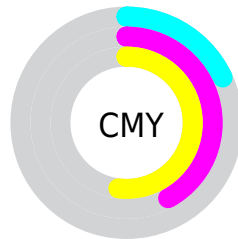


Cyan (0%)

Magenta (29%)

Yellow (41%)

Black (18%)



Cyan (18%)

Magenta (42%)

Yellow (52%)

Brightness & Saturation Gradients

These gradients show how the Decimal color 13735291 changes by changing the brightness by 10 percent. The first figure shows a shift by +10% for each color and the second figure -10%.

Similar to the brightness gradients but the following saturation gradients show a change of the Decimal color 13735291 by changing the saturation by 10% instead.

 13735291

 13735291

16777215

 11828066

 16763824

 9986634

 16771275

 8210995

 16777191

 6435614

 4791558

 3081984

 983040

 0

 13735291

 13735291

 13731430

 13739152

 13727825

 13742757

 13723964

 13746618

 13720359

 13750223

 13716498

 13754084

 13713152

 13757688

 13761535

 13762559

Harmonies

Analogous

The Analogous color harmony consists of three colors that are next to each other on the color wheel.



14192530



13735291



12492398

Triad

The Triadic color harmony groups three colors that are evenly spaced from another and form a triangle on the color wheel.



13735291



6730136



10067925

Complementary

The Complementary color scheme is a pair of colors which are on the opposite of each other on the color wheel.



13735291



8107985

Split Complementary

Split-complementary colors differ from the complementary color scheme. The scheme consists of three colors, the original color and two neighbors of the complement color.



7448791



13735291



5157300

Square

The Square scheme is like the rectangle color scheme, but the four colors are evenly spaced on the color wheel.



13735291



8760703



5353163



12359366

Rectangle

The Rectangle color scheme consists of four colors that form a rectangle on the color wheel.



13735291



11379821



5353163



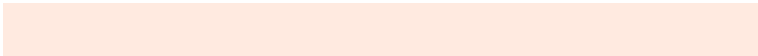
9216727

Sweetspot

The Sweet Spot groups the original color and five complimentary colors.



13735291



16771808



13728695



8418158



0



8421504

Same Dimension

The Same Dimension uses a secret algorithm to generate beautiful new colors.



13735291



16754818



13746299



6906206



11023104



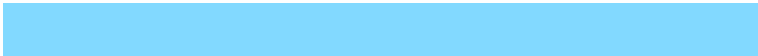
2690048

Inverse Universe

The Inverse Universe completely reimagines the original color for something new.



8107985



8575487



8096977



6186345



30120



7209

Previews

White Background



This preview shows how the Decimal color 13735291 looks on a white background.

Color Contrast Check

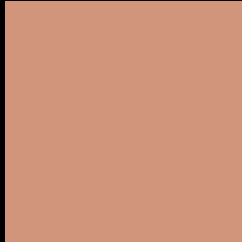
Large Text (above 18pt) WCAG AA × Fail

Any Text WCAG AA × Fail

Large Text (above 18pt) WCAG AAA × Fail

Any Text WCAG AAA × Fail

Black Background



This preview shows how the Decimal color 13735291 looks on a black background.

Color Contrast Check

Large Text (above 18pt) WCAG AA ✓ Pass

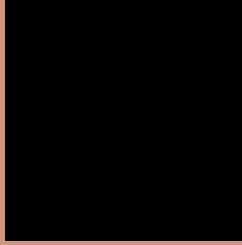
Any Text WCAG AA ✓ Pass

Large Text (above 18pt) WCAG AAA ✓ Pass

Any Text WCAG AAA ✓ Pass

If you want to check with other color combinations, try the [Color Contrast Checker](#).

Decimal 13735291 Background



This preview shows how black text looks on a background with the Decimal color 13735291.




This preview shows how white text looks on a background with the Decimal color 13735291.

Color Blindness Simulation

Color vision deficiency is a very complex topic, and I could not describe the different causes any better than Wikipedia does, so if you want to learn more, you should check out their [article about color blindness](#).

Dichromacy





Tritanopia
13930651

Trichromacy



Original Color
13735291

Protanomaly
12230271

Deuteranomaly
13015418

Tritanomaly
13865615

Monochromacy



Original Color
13735291

Achromatopsia
10790052

Achromatomaly
11837333

CSS Examples

Text

The CSS property to change the color of the text to Decimal 13735291 is called "color". The color property can be set on classes, ids or directly on the HTML element.

This example shows how text in the color #D1957B looks like.

```
.text, #text, p{  
    color:#D1957B  
}
```

If you want to add a text shadow in that color use the text-shadow property, you can generate a text shadow directly with our [CSS Text Shadow Generator](#).

Here you see how black text with a 4 pixel #D1957B colored shadow looks like.

```
.shadow{ text-shadow: 4px 4px 2px #D1957B  
}
```

Border

The CSS property to change the border of an element to Decimal 13735291 is called "border". The border property can be set on classes, ids or directly on the HTML element.

This example shows the color as border, it can be applied via the CSS property "border" or "border-color".

```
.border, #border, table{ border:4px solid  
#D1957B }
```

If only the border color should be changed use the property `border-color`.

```
.border{ border-color:#D1957B }
```

If you want to add a box shadow in that color use:

Here you see how a box with a 4 pixel #D1957B colored shadow looks like.

```
.boxshadow{ -moz-box-shadow:4px 4px 4px  
4px #D1957B; -webkit-box-shadow:4px 4px  
4px 4px #D1957B; box-shadow:4px 4px 4px  
4px #D1957B }
```

Background

The CSS property to change the background color of an element to Decimal 13735291 is called "background". The background property can be set on classes, ids or directly on the HTML element.

```
.background, #background, body{  
background:#D1957B }
```

If only the background color should be changed can be used:

```
.background{ background-color:#D1957B }
```

This example shows the color as background, it is applied via the CSS property "background".

To optimize and compress your CSS code, you can use our [online CSS compressor and optimizer](#) based on csstidy. If you want to create a linear or radial gradient as background or border, check our [CSS Gradient Generator](#).

Hey! You found this booklet interesting? Support Converting Colors with the new Membership Option!

The pro membership hides all ads, plus gives you double the colors in the color bucket, and more awesome pro features!

[Learn more, Memberships starting at \\$2.50/m!](#)

**Follow me
on Twitter!**

@ConvertingColor