

Converting Colors

Decimal(13735292)

Have a look what the booklet for
Decimal(13735292) contains.

Decimal(13735292)	3
<i>Conversions</i>	4
<i>Details</i>	6
<i>Harmonies</i>	11
<i>Previews</i>	23
<i>Color Blindness Simulation</i>	26
<i>CSS Examples</i>	29

Color

Decimal(13735292)

Conversions

Conversions Part 1

Format	Color
Hex	D1957C
RGB	209, 149, 124
RGB Percent	82%, 58%, 49%
CMY	0.1804, 0.4157, 0.5137
CMYK	0.00, 0.29, 0.41, 0.18
HSL	18°, 48%, 65%
HSV	18°, 41%, 82%
XYZ	40.6800, 36.5054, 23.9710
YIQ	164.0900, 43.7850, 4.9450

Conversions

Conversions Part 2

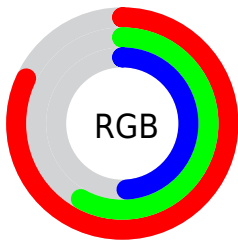
Format	Color
R _{YB}	209, 159, 124
Decimal	13735292
CIE _{Lab}	66.90, 19.46, 22.17
CIE _{LCh}	67, 29.502, 48.730
Yxy	36.5054, 0.4021, 0.3609
Android (android.graphics.Color)	4291925372 (0xFFD1957C)
YUV	164.0900, -19.7644, 39.3861
Hunter-Lab	60.4197, 14.4478, 18.7711

Details

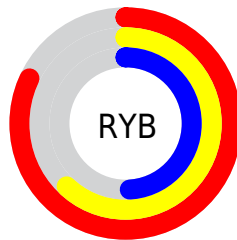
The Decimal color **13735292** is a light color, and the websafe version is hex **CC9966**. A complement of this color would be **8173777**, and the grayscale version is **10790052**.

A 20% lighter version of the original color is **16763825**, and **9986635** is the 20% darker color. If you saturate the color by 10%, you get **13731431**, and if you desaturate by 10%, it is **13739153**.

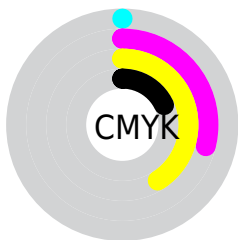
Distribution



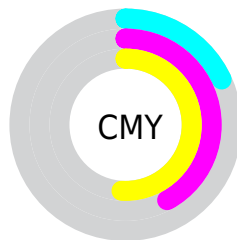
- Red (82%)
- Green (58%)
- Blue (49%)



- Red (82%)
- Yellow (62%)
- Blue (49%)



- Cyan (0%)
- Magenta (29%)
- Yellow (41%)
- Black (18%)



- Cyan (18%)
- Magenta (42%)
- Yellow (51%)

Brightness & Saturation Gradients

These gradients show how the Decimal color 13735292 changes by changing the brightness by 10 percent. The first figure shows a shift by +10% for each color and the second figure -10%.

Similar to the brightness gradients but the following saturation gradients show a change of the Decimal color 13735292 by changing the saturation by 10% instead.

 13735292

 13735292

16777215

 11828067

 16763825

 9986635

 16771276

 8210996

 16777192

 6435614

 4791559

 3081984

 983040

 0

 13735292

 13735292

 13731431

 13739153

 13727570

 13743014

 13723965

 13746619

 13720104

 13750480

 13716243

 13754340

 13712640

 13758201

 13761791

 13762559

Harmonies

Analogous

The Analogous color harmony consists of three colors that are next to each other on the color wheel.



14192787



13735292



12557935

Triad

The Triadic color harmony groups three colors that are evenly spaced from another and form a triangle on the color wheel.



13735292



6795672



10068181

Complementary

The Complementary color scheme is a pair of colors which are on the opposite of each other on the color wheel.



13735292



8173777

Split Complementary

Split-complementary colors differ from the complementary color scheme. The scheme consists of three colors, the original color and two neighbors of the complement color.



7448790



13735292



5288371

Square

The Square scheme is like the rectangle color scheme, but the four colors are evenly spaced on the color wheel.



13735292



8826239



5418954



12293830

Rectangle

The Rectangle color scheme consists of four colors that form a rectangle on the color wheel.



13735292



11445358



5418954



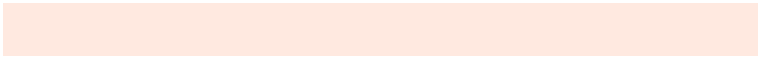
9151447

Sweetspot

The Sweet Spot groups the original color and five complimentary colors.



13735292



16771552



13728953



8418158



0



8421504

Same Dimension

The Same Dimension uses a secret algorithm to generate beautiful new colors.



13735292



16754562



13746044



6906206



11022848



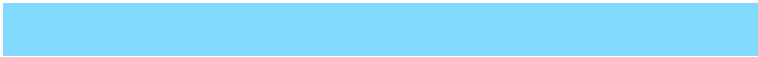
2690048

Inverse Universe

The Inverse Universe completely reimagines the original color for something new.



8173777



8575743



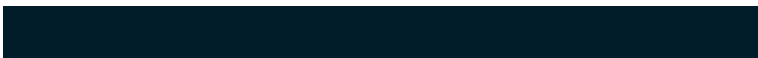
8163025



6186345



30632



7465

Previews

White Background



This preview shows how the Decimal color 13735292 looks on a white background.

Color Contrast Check

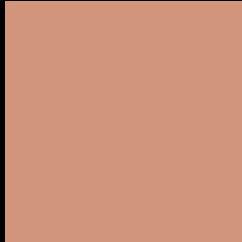
Large Text (above 18pt) WCAG AA × Fail

Any Text WCAG AA × Fail

Large Text (above 18pt) WCAG AAA × Fail

Any Text WCAG AAA × Fail

Black Background



This preview shows how the Decimal color 13735292 looks on a black background.

Color Contrast Check

Large Text (above 18pt) WCAG AA ✓ Pass

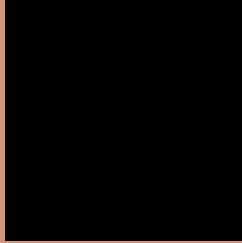
Any Text WCAG AA ✓ Pass

Large Text (above 18pt) WCAG AAA ✓ Pass

Any Text WCAG AAA ✓ Pass

If you want to check with other color combinations, try the [Color Contrast Checker](#).

Decimal 13735292 Background



This preview shows how black text looks on a background with the Decimal color 13735292.



This preview shows how white text looks on a background with the Decimal color 13735292.

Color Blindness Simulation

Color vision deficiency is a very complex topic, and I could not describe the different causes any better than Wikipedia does, so if you want to learn more, you should check out their [article about color blindness](#).

Dichromacy





Tritanopia
13930908

Trichromacy



Original Color
13735292

Protanomaly
12230272

Deuteranomaly
13015419

Tritanomaly
13865616

Monochromacy



Original Color
13735292

Achromatopsia
10790052

Achromatomaly
11837333

CSS Examples

Text

The CSS property to change the color of the text to Decimal 13735292 is called "color". The color property can be set on classes, ids or directly on the HTML element.

This example shows how text in the color #D1957C looks like.

```
.text, #text, p{  
    color:#D1957C  
}
```

If you want to add a text shadow in that color use the text-shadow property, you can generate a text shadow directly with our [CSS Text Shadow Generator](#).

Here you see how black text with a 4 pixel #D1957C colored shadow looks like.

```
.shadow{ text-shadow: 4px 4px 2px #D1957C  
}
```

Border

The CSS property to change the border of an element to Decimal 13735292 is called "border". The border property can be set on classes, ids or directly on the HTML element.

This example shows the color as border, it can be applied via the CSS property "border" or "border-color".

```
.border, #border, table{ border:4px solid  
#D1957C }
```

If only the border color should be changed use the property `border-color`.

```
.border{ border-color:#D1957C }
```

If you want to add a box shadow in that color use:

Here you see how a box with a 4 pixel #D1957C colored shadow looks like.

```
.boxshadow{ -moz-box-shadow:4px 4px 4px  
4px #D1957C; -webkit-box-shadow:4px 4px  
4px 4px #D1957C; box-shadow:4px 4px 4px  
4px #D1957C }
```

Background

The CSS property to change the background color of an element to Decimal 13735292 is called "background". The background property can be set on classes, ids or directly on the HTML element.

```
.background, #background, body{  
background:#D1957C }
```

If only the background color should be changed can be used:

```
.background{ background-color:#D1957C }
```

This example shows the color as background, it is applied via the CSS property "background".

To optimize and compress your CSS code, you can use our [online CSS compressor and optimizer](#) based on csstidy. If you want to create a linear or radial gradient as background or border, check our [CSS Gradient Generator](#).

Hey! You found this booklet interesting? Support Converting Colors with the new Membership Option!

The pro membership hides all ads, plus gives you double the colors in the color bucket, and more awesome pro features!

[Learn more, Memberships starting at \\$2.50/m!](#)

**Follow me
on Twitter!**

@ConvertingColor