

Converting Colors

Decimal(13736331)

Have a look what the booklet for
Decimal(13736331) contains.

Decimal(13736331)	3
<i>Conversions</i>	4
<i>Details</i>	6
<i>Harmonies</i>	11
<i>Previews</i>	23
<i>Color Blindness Simulation</i>	26
<i>CSS Examples</i>	29

Color

Decimal(13736331)

Conversions

Conversions Part 1

Format	Color
Hex	D1998B
RGB	209, 153, 139
RGB Percent	82%, 60%, 55%
CMY	0.1804, 0.4000, 0.4549
CMYK	0.00, 0.27, 0.33, 0.18
HSL	12°, 43%, 68%
HSV	12°, 33%, 82%
XYZ	42.3459, 38.2019, 29.5679
YIQ	168.1480, 37.8700, 7.5180

Conversions

Conversions Part 2

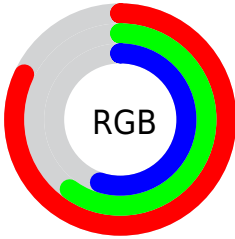
Format	Color
R _Y B	209, 157, 139
Decimal	13736331
CIE Lab	68.17, 19.08, 15.61
CIE LCh	68, 24.651, 39.275
Yxy	38.2019, 0.3846, 0.3469
Android (android.graphics.Color)	4291926411 (0xFFD1998B)
YUV	168.1480, -14.3700, 35.8272
Hunter-Lab	61.8076, 14.1313, 14.9018

Details

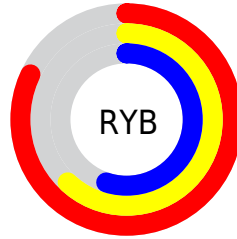
The Decimal color **13736331** is a light color, and the websafe version is hex **CC9999**. A complement of this color would be **9159633**, and the grayscale version is **11053224**.

A 20% lighter version of the original color is **16765121**, and **10053209** is the 20% darker color. If you saturate the color by 10%, you get **13731958**, and if you desaturate by 10%, it is **13740704**.

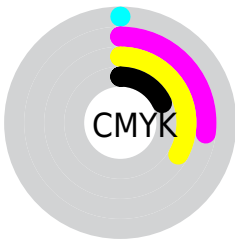
Distribution



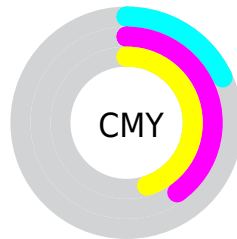
- Red (82%)
- Green (60%)
- Blue (55%)



- Red (82%)
- Yellow (62%)
- Blue (55%)



- Cyan (0%)
- Magenta (27%)
- Yellow (33%)
- Black (18%)



- Cyan (18%)
- Magenta (40%)
- Yellow (45%)

Brightness & Saturation Gradients

These gradients show how the Decimal color 13736331 changes by changing the brightness by 10 percent. The first figure shows a shift by +10% for each color and the second figure -10%.

Similar to the brightness gradients but the following saturation gradients show a change of the Decimal color 13736331 by changing the saturation by 10% instead.

 13736331

 13736331

16777215

 11894642

 16765121

 10053209

 16772316

 8277314

 16777209

 6567467

 4857879

 3279360

 1572865

 0

 13736331

 13736331

 13731958

 13740704

 13727841

 13744821

 13723468

 13749194

 13719095

 13753567

 13714723

 13757940

 13710606

 13762047

 13707776

 13762559

Harmonies

Analogous

The Analogous color harmony consists of three colors that are next to each other on the color wheel.



13866656



13736331



12885885

Triad

The Triadic color harmony groups three colors that are evenly spaced from another and form a triangle on the color wheel.



13736331



8237462



9742034

Complementary

The Complementary color scheme is a pair of colors which are on the opposite of each other on the color wheel.



13736331



9159633

Split Complementary

Split-complementary colors differ from the complementary color scheme. The scheme consists of three colors, the original color and two neighbors of the complement color.



7843279



13736331



6992813

Square

The Square scheme is like the rectangle color scheme, but the four colors are evenly spaced on the color wheel.



13736331



9940355



6730178



11706057

Rectangle

The Rectangle color scheme consists of four colors that form a rectangle on the color wheel.



13736331



12035450



6730178



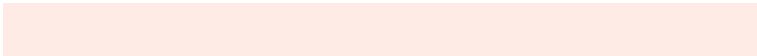
9087186

Sweetspot

The Sweet Spot groups the original color and five complimentary colors.



13736331



16772070



13732803



8418160



0



8421504

Same Dimension

The Same Dimension uses a secret algorithm to generate beautiful new colors.



13736331



16756121



13745291



6905950



11018752



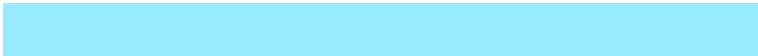
2689024

Inverse Universe

The Inverse Universe completely reimagines the original color for something new.



9159633



10087423



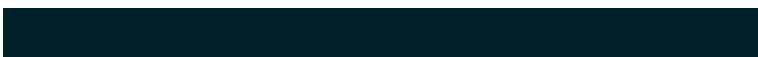
9150673



6186601



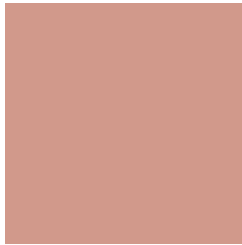
34728



8489

Previews

White Background



This preview shows how the Decimal color 13736331 looks on a white background.

Color Contrast Check

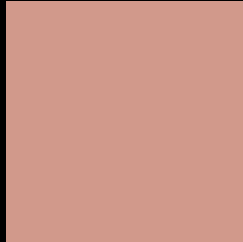
Large Text (above 18pt) WCAG AA × Fail

Any Text WCAG AA × Fail

Large Text (above 18pt) WCAG AAA × Fail

Any Text WCAG AAA × Fail

Black Background



This preview shows how the Decimal color 13736331 looks on a black background.

Color Contrast Check

Large Text (above 18pt) WCAG AA ✓ Pass

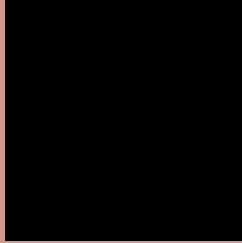
Any Text WCAG AA ✓ Pass

Large Text (above 18pt) WCAG AAA ✓ Pass

Any Text WCAG AAA ✓ Pass

If you want to check with other color combinations, try the [Color Contrast Checker](#).

Decimal 13736331 Background



This preview shows how black text looks on a background with the Decimal color 13736331.




This preview shows how white text looks on a background with the Decimal color 13736331.

Color Blindness Simulation

Color vision deficiency is a very complex topic, and I could not describe the different causes any better than Wikipedia does, so if you want to learn more, you should check out their [article about color blindness](#).

Dichromacy





Tritanopia
13866657

Trichromacy



Original Color
13736331

Protanomaly
12296591

Deuteranomaly
13081994

Tritanomaly
13801369

Monochromacy



Original Color
13736331

Achromatopsia
11053224

Achromatomaly
12034973

CSS Examples

Text

The CSS property to change the color of the text to Decimal 13736331 is called "color". The color property can be set on classes, ids or directly on the HTML element.

This example shows how text in the color #D1998B looks like.

```
.text, #text, p{  
  color:#D1998B  
}
```

If you want to add a text shadow in that color use the text-shadow property, you can generate a text shadow directly with our [CSS Text Shadow Generator](#).

Here you see how black text with a 4 pixel #D1998B colored shadow looks like.

```
.shadow{ text-shadow: 4px 4px 2px #D1998B
}
```

Border

The CSS property to change the border of an element to Decimal 13736331 is called "border". The border property can be set on classes, ids or directly on the HTML element.

This example shows the color as border, it can be applied via the CSS property "border" or "border-color".

```
.border, #border, table{ border:4px solid
#D1998B }
```

If only the border color should be changed use the property `border-color`.

```
.border{ border-color:#D1998B }
```

If you want to add a box shadow in that color use:

Here you see how a box with a 4 pixel #D1998B colored shadow looks like.

```
.boxshadow{ -moz-box-shadow:4px 4px 4px  
4px #D1998B; -webkit-box-shadow:4px 4px  
4px 4px #D1998B; box-shadow:4px 4px 4px  
4px #D1998B }
```

Background

The CSS property to change the background color of an element to Decimal 13736331 is called "background". The background property can be set on classes, ids or directly on the HTML element.

```
.background, #background, body{  
background:#D1998B }
```

If only the background color should be changed can be used:

```
.background{ background-color:#D1998B }
```

This example shows the color as background, it is applied via the CSS property "background".

To optimize and compress your CSS code, you can use our [online CSS compressor and optimizer](#) based on csstidy. If you want to create a linear or radial gradient as background or border, check our [CSS Gradient Generator](#).

Hey! You found this booklet interesting? Support Converting Colors with the new Membership Option!

The pro membership hides all ads, plus gives you double the colors in the color bucket, and more awesome pro features!

[Learn more, Memberships starting at \\$2.50/m!](#)

**Follow me
on Twitter!**

@ConvertingColor