

Converting Colors

Decimal(13736340)

Have a look what the booklet for
Decimal(13736340) contains.

Decimal(13736340)	3
<i>Conversions</i>	4
<i>Details</i>	6
<i>Harmonies</i>	11
<i>Previews</i>	23
<i>Color Blindness Simulation</i>	26
<i>CSS Examples</i>	29

Color

Decimal(13736340)

Conversions

Conversions Part 1

Format	Color
Hex	D19994
RGB	209, 153, 148
RGB Percent	82%, 60%, 58%
CMY	0.1804, 0.4000, 0.4196
CMYK	0.00, 0.27, 0.29, 0.18
HSL	5°, 40%, 70%
HSV	5°, 29%, 82%
XYZ	43.0310, 38.4759, 33.1756
YIQ	169.1740, 34.9810, 10.3170

Conversions

Conversions Part 2

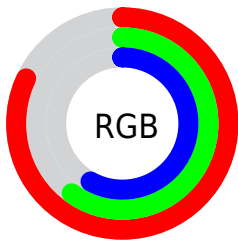
Format	Color
R _Y B	209, 153, 148
Decimal	13736340
CIE Lab	68.37, 20.27, 10.88
CIE LCh	68, 23.004, 28.240
Yxy	38.4759, 0.3752, 0.3355
Android (android.graphics.Color)	4291926420 (0xFFD19994)
YUV	169.1740, -10.4388, 34.9274
Hunter-Lab	62.0289, 15.2793, 11.7096

Details

The Decimal color **13736340** is a light color, and the websafe version is hex **CC9999**. A complement of this color would be **9751761**, and the grayscale version is **11119017**.

A 20% lighter version of the original color is **16765130**, and **10053217** is the 20% darker color. If you saturate the color by 10%, you get **13731455**, and if you desaturate by 10%, it is **13741225**.

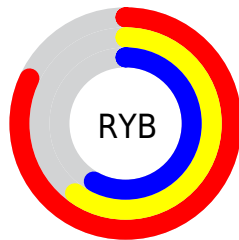
Distribution



Red (82%)

Green (60%)

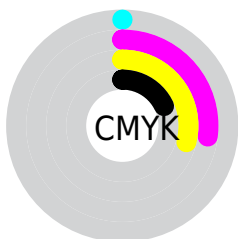
Blue (58%)



Red (82%)

Yellow (60%)

Blue (58%)

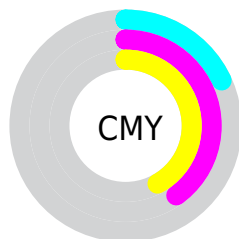


Cyan (0%)

Magenta (27%)

Yellow (29%)

Black (18%)



Cyan (18%)

Magenta (40%)

Yellow (42%)

Brightness & Saturation Gradients

These gradients show how the Decimal color 13736340 changes by changing the brightness by 10 percent. The first figure shows a shift by +10% for each color and the second figure -10%.

Similar to the brightness gradients but the following saturation gradients show a change of the Decimal color 13736340 by changing the saturation by 10% instead.

 13736340

 13736340

16777215

 11894650

 16765130

 10053217

 16772326

 8277322

 6567475

 4923422

 3344901

 1703937

 0

 13736340

 13736340

 13731455

 13741225

 13726570

 13746110

 13721429

 13751251

 13716544

 13756136

 13711660

 13761021

 13706775

 13762559

 13701890

 13701376

Harmonies

Analogous

The Analogous color harmony consists of three colors that are next to each other on the color wheel.



13605033



13736340



13147780

Triad

The Triadic color harmony groups three colors that are evenly spaced from another and form a triangle on the color wheel.



13736340



9023632



9218512

Complementary

The Complementary color scheme is a pair of colors which are on the opposite of each other on the color wheel.



13736340



9751761

Split Complementary

Split-complementary colors differ from the complementary color scheme. The scheme consists of three colors, the original color and two neighbors of the complement color.



7647177



13736340



7713445

Square

The Square scheme is like the rectangle color scheme, but the four colors are evenly spaced on the color wheel.



13736340



10595202



7058106



11117259

Rectangle

The Rectangle color scheme consists of four colors that form a rectangle on the color wheel.



13736340



12493694



7058106



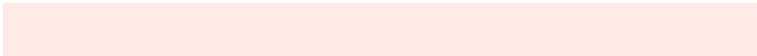
8629199

Sweetspot

The Sweet Spot groups the original color and five complimentary colors.



13736340



16771816



13735117



8418161



0



8421504

Same Dimension

The Same Dimension uses a secret algorithm to generate beautiful new colors.



13736340



16756134



13744020



6905694



11013632



2687744

Inverse Universe

The Inverse Universe completely reimagines the original color for something new.



9751761



10942719



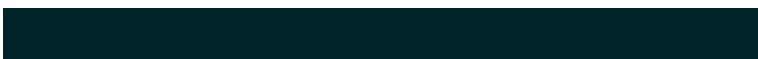
9744081



6187113



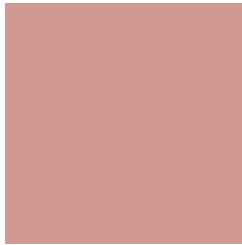
39848



9513

Previews

White Background



This preview shows how the Decimal color 13736340 looks on a white background.

Color Contrast Check

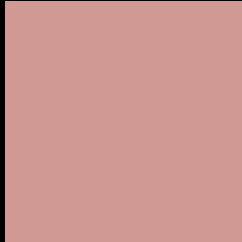
Large Text (above 18pt) WCAG AA × Fail

Any Text WCAG AA × Fail

Large Text (above 18pt) WCAG AAA × Fail

Any Text WCAG AAA × Fail

Black Background



This preview shows how the Decimal color 13736340 looks on a black background.

Color Contrast Check

Large Text (above 18pt) WCAG AA ✓ Pass

Any Text WCAG AA ✓ Pass

Large Text (above 18pt) WCAG AAA ✓ Pass

Any Text WCAG AAA ✓ Pass

If you want to check with other color combinations, try the [Color Contrast Checker](#).

Decimal 13736340 Background



This preview shows how black text looks on a background with the Decimal color 13736340.



This preview shows how white text looks on a background with the Decimal color 13736340.

Color Blindness Simulation

Color vision deficiency is a very complex topic, and I could not describe the different causes any better than Wikipedia does, so if you want to learn more, you should check out their [article about color blindness](#).


Dichromacy



Original Color
13736340

Protanopia
11380379

Deuteranopia
12558739



Tritanopia
13866914

Trichromacy



Original Color
13736340

Protanomaly
12231064

Deuteranomaly
13016723

Tritanomaly
13801629

Monochromacy



Original Color
13736340

Achromatopsia
11119017

Achromatomaly
12100513

CSS Examples

Text

The CSS property to change the color of the text to Decimal 13736340 is called "color". The color property can be set on classes, ids or directly on the HTML element.

This example shows how text in the color #D19994 looks like.

```
.text, #text, p{  
    color:#D19994  
}
```

If you want to add a text shadow in that color use the text-shadow property, you can generate a text shadow directly with our [CSS Text Shadow Generator](#).

Here you see how black text with a 4 pixel #D19994 colored shadow looks like.

```
.shadow{ text-shadow: 4px 4px 2px #D19994
}
```

Border

The CSS property to change the border of an element to Decimal 13736340 is called "border". The border property can be set on classes, ids or directly on the HTML element.

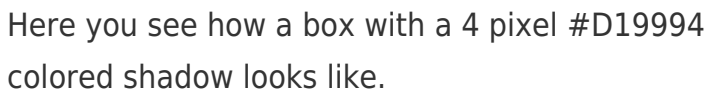
This example shows the color as border, it can be applied via the CSS property "border" or "border-color".

```
.border, #border, table{ border:4px solid
#D19994 }
```

If only the border color should be changed use the property `border-color`.

```
.border{ border-color:#D19994 }
```

If you want to add a box shadow in that color use:



Here you see how a box with a 4 pixel #D19994 colored shadow looks like.

```
.boxshadow{ -moz-box-shadow:4px 4px 4px  
4px #D19994; -webkit-box-shadow:4px 4px  
4px 4px #D19994; box-shadow:4px 4px 4px  
4px #D19994 }
```

Background

The CSS property to change the background color of an element to Decimal 13736340 is called "background". The background property can be set on classes, ids or directly on the HTML element.

```
.background, #background, body{  
background:#D19994 }
```

If only the background color should be changed can be used:

```
.background{ background-color:#D19994 }
```

This example shows the color as background, it is applied via the CSS property "background".

To optimize and compress your CSS code, you can use our [online CSS compressor and optimizer](#) based on csstidy. If you want to create a linear or radial gradient as background or border, check our [CSS Gradient Generator](#).

Hey! You found this booklet interesting? Support Converting Colors with the new Membership Option!

The pro membership hides all ads, plus gives you double the colors in the color bucket, and more awesome pro features!

[Learn more, Memberships starting at \\$2.50/m!](#)

**Follow me
on Twitter!**

@ConvertingColor