

Converting Colors

Decimal(13738377)

Have a look what the booklet for
Decimal(13738377) contains.

Decimal(13738377)	3
<i>Conversions</i>	4
<i>Details</i>	6
<i>Harmonies</i>	11
<i>Previews</i>	23
<i>Color Blindness Simulation</i>	26
<i>CSS Examples</i>	29

Color

Decimal(13738377)

Conversions

Conversions Part 1

Format	Color
Hex	D1A189
RGB	209, 161, 137
RGB Percent	82%, 63%, 54%
CMY	0.1804, 0.3686, 0.4627
CMYK	0.00, 0.23, 0.34, 0.18
HSL	20°, 44%, 68%
HSV	20°, 34%, 82%
XYZ	43.5547, 40.8512, 29.2564
YIQ	172.6160, 36.3120, 2.7120

Conversions

Conversions Part 2

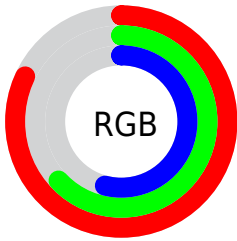
Format	Color
R _Y B	209, 173, 137
Decimal	13738377
CIE Lab	70.07, 14.48, 19.34
CIE LCh	70, 24.163, 53.175
Yxy	40.8512, 0.3832, 0.3594
Android (android.graphics.Color)	4291928457 (0xFFD1A189)
YUV	172.6160, -17.5587, 31.9088
Hunter-Lab	63.9149, 9.7874, 17.6011

Details

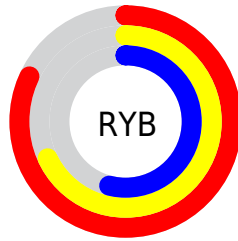
The Decimal color **13738377** is a light color, and the websafe version is hex **CC9999**. A complement of this color would be **9026001**, and the grayscale version is **11382189**.

A 20% lighter version of the original color is **16767166**, and **10054999** is the 20% darker color. If you saturate the color by 10%, you get **13734772**, and if you desaturate by 10%, it is **13741982**.

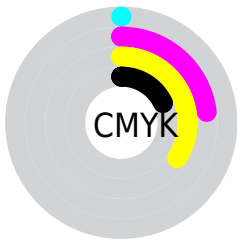
Distribution



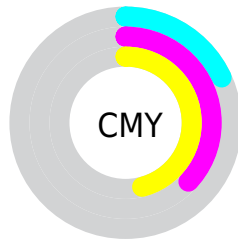
- Red (82%)
- Green (63%)
- Blue (54%)



- Red (82%)
- Yellow (68%)
- Blue (54%)



- Cyan (0%)
- Magenta (23%)
- Yellow (34%)
- Black (18%)



- Cyan (18%)
- Magenta (37%)
- Yellow (46%)

Brightness & Saturation Gradients

These gradients show how the Decimal color 13738377 changes by changing the brightness by 10 percent. The first figure shows a shift by +10% for each color and the second figure -10%.

Similar to the brightness gradients but the following saturation gradients show a change of the Decimal color 13738377 by changing the saturation by 10% instead.

 13738377

 13738377

16777215

 11896688

 16767166

 10054999

 16774362

 8279360

 16777207

 6569513

 4925205

 3346944

 1835009

 0

 13738377

 13738377

 13734772

 13741982

 13731167

 13745587

 13727562

 13749192

 13723957

 13752797

 13720353

 13756402

 13716748

 13759999

 13714944

 13762559

Harmonies

Analogous

The Analogous color harmony consists of three colors that are next to each other on the color wheel.



14195867



13738377



12626048

Triad

The Triadic color harmony groups three colors that are evenly spaced from another and form a triangle on the color wheel.



13738377



7976869



11053011

Complementary

The Complementary color scheme is a pair of colors which are on the opposite of each other on the color wheel.



13738377



9026001

Split Complementary

Split-complementary colors differ from the complementary color scheme. The scheme consists of three colors, the original color and two neighbors of the complement color.



9088982



13738377



7124924

Square

The Square scheme is like the rectangle color scheme, but the four colors are evenly spaced on the color wheel.



13738377



9483664



7517390



12820678

Rectangle

The Rectangle color scheme consists of four colors that form a rectangle on the color wheel.



13738377



11709824



7517390



10398422

Sweetspot

The Sweet Spot groups the original color and five complimentary colors.



13738377



16772838



13732281



8418672



0



8421504

Same Dimension

The Same Dimension uses a secret algorithm to generate beautiful new colors.



13738377



16759190



13747593



6906462



11024384



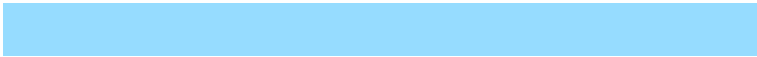
2690560

Inverse Universe

The Inverse Universe completely reimagines the original color for something new.



9026001



9886975



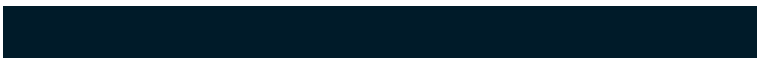
9016785



6186345



28840



6953

Previews

White Background



This preview shows how the Decimal color 13738377 looks on a white background.

Color Contrast Check

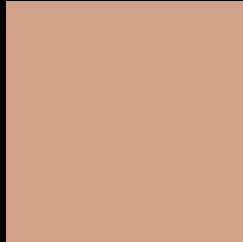
Large Text (above 18pt) WCAG AA × Fail

Any Text WCAG AA × Fail

Large Text (above 18pt) WCAG AAA × Fail

Any Text WCAG AAA × Fail

Black Background



This preview shows how the Decimal color 13738377 looks on a black background.

Color Contrast Check

Large Text (above 18pt) WCAG AA ✓ Pass

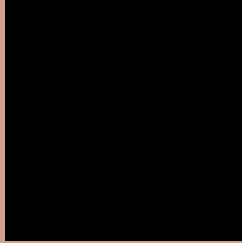
Any Text WCAG AA ✓ Pass

Large Text (above 18pt) WCAG AAA ✓ Pass

Any Text WCAG AAA ✓ Pass

If you want to check with other color combinations, try the [Color Contrast Checker](#).

Decimal 13738377 Background



This preview shows how black text looks on a background with the Decimal color 13738377.



This preview shows how white text looks on a background with the Decimal color 13738377.

Color Blindness Simulation

Color vision deficiency is a very complex topic, and I could not describe the different causes any better than Wikipedia does, so if you want to learn more, you should check out their [article about color blindness](#).


Dichromacy



Original Color
13738377

Protanopia
11905934

Deuteranopia
13149576



Tritanopia
13933993

Trichromacy



Original Color
13738377

Protanomaly
12560268

Deuteranomaly
13345928

Tritanomaly
13868701

Monochromacy



Original Color
13738377

Achromatopsia
11382189

Achromatomaly
12233120

CSS Examples

Text

The CSS property to change the color of the text to Decimal 13738377 is called "color". The color property can be set on classes, ids or directly on the HTML element.

This example shows how text in the color #D1A189 looks like.

```
.text, #text, p{  
    color:#D1A189  
}
```

If you want to add a text shadow in that color use the text-shadow property, you can generate a text shadow directly with our [CSS Text Shadow Generator](#).

Here you see how black text with a 4 pixel #D1A189 colored shadow looks like.

```
.shadow{ text-shadow: 4px 4px 2px #D1A189
}
```

Border

The CSS property to change the border of an element to Decimal 13738377 is called "border". The border property can be set on classes, ids or directly on the HTML element.

This example shows the color as border, it can be applied via the CSS property "border" or "border-color".

```
.border, #border, table{ border:4px solid
#D1A189 }
```

If only the border color should be changed use the property `border-color`.

```
.border{ border-color:#D1A189 }
```

If you want to add a box shadow in that color use:

Here you see how a box with a 4 pixel #D1A189 colored shadow looks like.

```
.boxshadow{ -moz-box-shadow:4px 4px 4px  
4px #D1A189; -webkit-box-shadow:4px 4px  
4px 4px #D1A189; box-shadow:4px 4px 4px  
4px #D1A189 }
```

Background

The CSS property to change the background color of an element to Decimal 13738377 is called "background". The background property can be set on classes, ids or directly on the HTML element.

```
.background, #background, body{  
background:#D1A189 }
```

If only the background color should be changed can be used:

```
.background{ background-color:#D1A189 }
```

This example shows the color as background, it is applied via the CSS property "background".

To optimize and compress your CSS code, you can use our [online CSS compressor and optimizer](#) based on csstidy. If you want to create a linear or radial gradient as background or border, check our [CSS Gradient Generator](#).

Hey! You found this booklet interesting? Support Converting Colors with the new Membership Option!

The pro membership hides all ads, plus gives you double the colors in the color bucket, and more awesome pro features!

[Learn more, Memberships starting at \\$2.50/m!](#)

**Follow me
on Twitter!**

@ConvertingColor