

# Converting Colors

Decimal(13739926)

Have a look what the booklet for  
Decimal(13739926) contains.

<b>Decimal(13739926)</b> .....	3
<i><b>Conversions</b></i> .....	4
<i><b>Details</b></i> .....	6
<i><b>Harmonies</b></i> .....	11
<i><b>Previews</b></i> .....	23
<i><b>Color Blindness Simulation</b></i> .....	26
<i><b>CSS Examples</b></i> .....	29

# **Color**

**Decimal(13739926)**

# Conversions

## Conversions Part 1

<b>Format</b>	<b>Color</b>
Hex	D1A796
RGB	209, 167, 150
RGB Percent	82%, 65%, 59%
CMY	0.1804, 0.3451, 0.4118
CMYK	0.00, 0.20, 0.28, 0.18
HSL	17°, 39%, 70%
HSV	17°, 28%, 82%
XYZ	45.6182, 43.3948, 34.8258
YIQ	177.6200, 30.4890, 3.6170

# Conversions

## Conversions Part 2

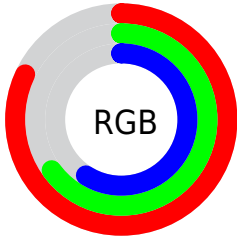
<b>Format</b>	<b>Color</b>
R <sub>YB</sub>	209, 174, 150
Decimal	13739926
CIE Lab	71.82, 12.93, 14.64
CIE LCh	72, 19.534, 48.549
Yxy	43.3948, 0.3684, 0.3504
Android (android.graphics.Color)	4291930006 (0xFFD1A796)
YUV	177.6200, -13.6167, 27.5203
Hunter-Lab	65.8747, 8.3306, 14.7676

# Details

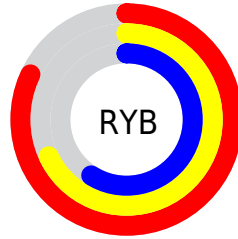
The Decimal color **13739926** is a light color, and the websafe version is hex **CC9999**. A complement of this color would be **9879761**, and the grayscale version is **11711154**.

A 20% lighter version of the original color is **16768716**, and **10122083** is the 20% darker color. If you saturate the color by 10%, you get **13736065**, and if you desaturate by 10%, it is **13743787**.

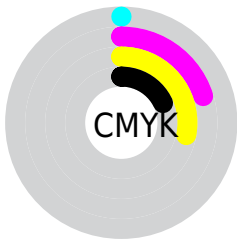
# Distribution



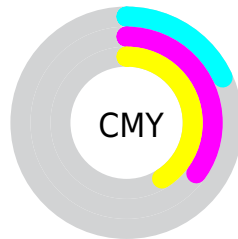
- Red (82%)
- Green (65%)
- Blue (59%)



- Red (82%)
- Yellow (68%)
- Blue (59%)



- Cyan (0%)
- Magenta (20%)
- Yellow (28%)
- Black (18%)



- Cyan (18%)
- Magenta (35%)
- Yellow (41%)

# Brightness & Saturation Gradients

These gradients show how the Decimal color 13739926 changes by changing the brightness by 10 percent. The first figure shows a shift by +10% for each color and the second figure -10%.

Similar to the brightness gradients but the following saturation gradients show a change of the Decimal color 13739926 by changing the saturation by 10% instead.



 13739926

 13739926

16777215

 11898236

 16768716

 10122083

 16776168

 8346187

 6636341

 4992031

 3413768

 2031616

 0

 13739926

 13739926

 13736065

 13743787

 13732204

 13747648

 13728343

 13751509

 13724482

 13755370

 13720878

 13758974

 13717017

 13762559

 13713156

 13712384

# Harmonies

## Analogous

The Analogous color harmony consists of three colors that are next to each other on the color wheel.



14001317



13739926



12889229

# Triad

The Triadic color harmony groups three colors that are evenly spaced from another and form a triangle on the color wheel.



13739926



9157288



11185874

# Complementary

The Complementary color scheme is a pair of colors which are on the opposite of each other on the color wheel.



13739926



9879761

# Split Complementary

Split-complementary colors differ from the complementary color scheme. The scheme consists of three colors, the original color and two neighbors of the complement color.



9680082



13739926



8436411

# Square

The Square scheme is like the rectangle color scheme, but the four colors are evenly spaced on the color wheel.



13739926



10401688



8632522



12626120

# Rectangle

The Rectangle color scheme consists of four colors that form a rectangle on the color wheel.



13739926



12169357



8632522



10662099



# Sweetspot

The Sweet Spot groups the original color and five complimentary colors.



13739926



16773355



13735616



8418931



0



8421504



# Same Dimension

The Same Dimension uses a secret algorithm to generate beautiful new colors.



13739926



16761256



13747350



6906206



11022336



2690048

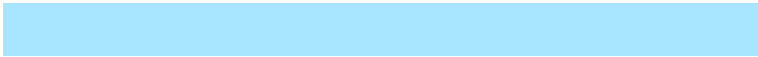


# Inverse Universe

The Inverse Universe completely reimagines the original color for something new.



9879761



11069183



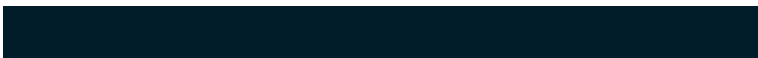
9872337



6186601



30888



7465



# Previews

## White Background



This preview shows how the Decimal color 13739926 looks on a white background.

## Color Contrast Check

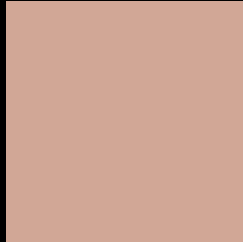
Large Text (above 18pt) WCAG AA × Fail

Any Text WCAG AA × Fail

Large Text (above 18pt) WCAG AAA × Fail

Any Text WCAG AAA × Fail

# Black Background



This preview shows how the Decimal color 13739926 looks on a black background.

## Color Contrast Check

Large Text (above 18pt) WCAG AA ✓ Pass

Any Text WCAG AA ✓ Pass

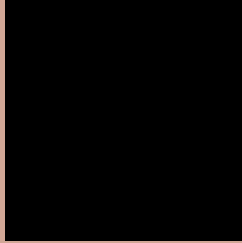
Large Text (above 18pt) WCAG AAA ✓ Pass

Any Text WCAG AAA ✓ Pass

If you want to check with other color combinations, try the [Color Contrast Checker](#).



## Decimal 13739926 Background



This preview shows how black text looks on a background with the Decimal color 13739926.




This preview shows how white text looks on a background with the Decimal color 13739926.

# Color Blindness Simulation

Color vision deficiency is a very complex topic, and I could not describe the different causes any better than Wikipedia does, so if you want to learn more, you should check out their [article about color blindness](#).

## Dichromacy





**Tritanopia**  
13935536

# Trichromacy



**Original Color**  
13739926

**Protanomaly**  
12692889

**Deuteranomaly**  
13478294

**Tritanomaly**  
13870247

# Monochromacy



**Original Color**  
13739926

**Achromatopsia**  
11711154

**Achromatomaly**  
12431016

# CSS Examples

## Text

The CSS property to change the color of the text to Decimal 13739926 is called "color". The color property can be set on classes, ids or directly on the HTML element.

This example shows how text in the color #D1A796 looks like.

```
.text, #text, p{  
  color:#D1A796  
}
```

If you want to add a text shadow in that color use the text-shadow property, you can generate a text shadow directly with our [CSS Text Shadow Generator](#).

Here you see how black text with a 4 pixel #D1A796 colored shadow looks like.

```
.shadow{ text-shadow: 4px 4px 2px #D1A796
}
```

## Border

The CSS property to change the border of an element to Decimal 13739926 is called "border". The border property can be set on classes, ids or directly on the HTML element.

This example shows the color as border, it can be applied via the CSS property "border" or "border-color".

```
.border, #border, table{ border:4px solid
#D1A796 }
```

If only the border color should be changed use the property `border-color`.

```
.border{ border-color:#D1A796 }
```

If you want to add a box shadow in that color use:

Here you see how a box with a 4 pixel #D1A796 colored shadow looks like.

```
.boxshadow{ -moz-box-shadow:4px 4px 4px  
4px #D1A796; -webkit-box-shadow:4px 4px  
4px 4px #D1A796; box-shadow:4px 4px 4px  
4px #D1A796 }
```

# Background

The CSS property to change the background color of an element to Decimal 13739926 is called "background". The background property can be set on classes, ids or directly on the HTML element.

```
.background, #background, body{  
background:#D1A796 }
```

If only the background color should be changed can be used:

```
.background{ background-color:#D1A796 }
```

This example shows the color as background, it is applied via the CSS property "background".

To optimize and compress your CSS code, you can use our [online CSS compressor and optimizer](#) based on csstidy. If you want to create a linear or radial gradient as background or border, check our [CSS Gradient Generator](#).



Hey! You found this booklet interesting? Support Converting Colors with the new Membership Option!

The pro membership hides all ads, plus gives you double the colors in the color bucket, and more awesome pro features!

**[Learn more, Memberships starting at \\$2.50/m!](#)**

**Follow me  
on Twitter!**

@ConvertingColor