

# Converting Colors

Decimal(13741227)

Have a look what the booklet for  
Decimal(13741227) contains.

<b>Decimal(13741227)</b> .....	3
<i><b>Conversions</b></i> .....	4
<i><b>Details</b></i> .....	6
<i><b>Harmonies</b></i> .....	11
<i><b>Previews</b></i> .....	23
<i><b>Color Blindness Simulation</b></i> .....	26
<i><b>CSS Examples</b></i> .....	29

# **Color**

**Decimal(13741227)**

# Conversions

## Conversions Part 1

<b>Format</b>	<b>Color</b>
Hex	D1ACAB
RGB	209, 172, 171
RGB Percent	82%, 67%, 67%
CMY	0.1804, 0.3255, 0.3294
CMYK	0.00, 0.18, 0.18, 0.18
HSL	2°, 29%, 75%
HSV	2°, 18%, 82%
XYZ	48.3977, 46.0006, 44.8563
YIQ	182.9490, 22.3730, 7.5330

# Conversions

## Conversions Part 2

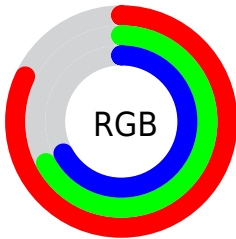
Format	Color
R <sub>Y</sub> B	209, 172, 171
Decimal	13741227
CIE Lab	73.55, 13.29, 5.57
CIE LCh	74, 14.416, 22.743
Yxy	46.0006, 0.3475, 0.3303
Android (android.graphics.Color)	4291931307 (0xFFD1ACAB)
YUV	182.9490, -5.8909, 22.8467
Hunter-Lab	67.8238, 8.6825, 8.2643

# Details

The Decimal color **13741227** is a light color, and the websafe version is hex **CC9999**. A complement of this color would be **11260113**, and the grayscale version is **12040119**.

A 20% lighter version of the original color is **16770018**, and **10123383** is the 20% darker color. If you saturate the color by 10%, you get **13736086**, and if you desaturate by 10%, it is **13746368**.

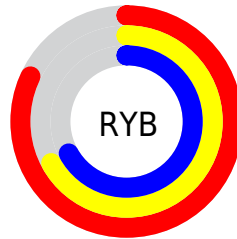
# Distribution



Red (82%)

Green (67%)

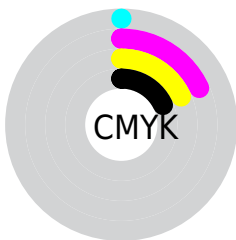
Blue (67%)



Red (82%)

Yellow (67%)

Blue (67%)

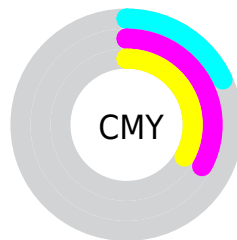


Cyan (0%)

Magenta (18%)

Yellow (18%)

Black (18%)



Cyan (18%)

Magenta (33%)

Yellow (33%)

# Brightness & Saturation Gradients

These gradients show how the Decimal color 13741227 changes by changing the brightness by 10 percent. The first figure shows a shift by +10% for each color and the second figure -10%.

Similar to the brightness gradients but the following saturation gradients show a change of the Decimal color 13741227 by changing the saturation by 10% instead.



 13741227

 13741227

16777215

 11899281

 16770018

 10123383

 8413022

 6702919

 5124144

 3545883

 2228736

 0

 13741227

 13741227

 13736086

 13746368

 13730689

 13751765

 13725548

 13756906

 13720407

 13762047

 13715010

 13762559

 13709870

 13704729

 13699332

 13698560

# Harmonies

## Analogous

The Analogous color harmony consists of three colors that are next to each other on the color wheel.



13544632



13741227



13479840

# Triad

The Triadic color harmony groups three colors that are evenly spaced from another and form a triangle on the color wheel.



13741227



10861220



10729423

# Complementary

The Complementary color scheme is a pair of colors which are on the opposite of each other on the color wheel.



13741227



11260113

# Split Complementary

Split-complementary colors differ from the complementary color scheme. The scheme consists of three colors, the original color and two neighbors of the complement color.



9878217



13741227



10075313

# Square

The Square scheme is like the rectangle color scheme, but the four colors are evenly spaced on the color wheel.



13741227



11843484



9682110



11776717

# Rectangle

The Rectangle color scheme consists of four colors that form a rectangle on the color wheel.



13741227



13087132



9682110



10401997



# Sweetspot

The Sweet Spot groups the original color and five complimentary colors.



13741227



16774130



13741008



8419448



0



8421504



# Same Dimension

The Same Dimension uses a secret algorithm to generate beautiful new colors.



13741227



16763079



13746091



6905438



11011072



2687232

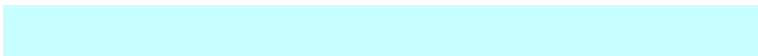


# Inverse Universe

The Inverse Universe completely reimagines the original color for something new.



11260113



13106943



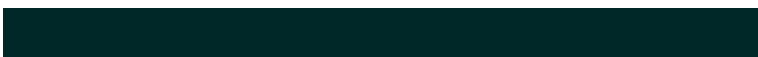
11255249



6187113



42152



10281



# Previews

## White Background



This preview shows how the Decimal color 13741227 looks on a white background.

## Color Contrast Check

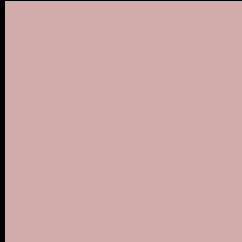
Large Text (above 18pt) WCAG AA × Fail

Any Text WCAG AA × Fail

Large Text (above 18pt) WCAG AAA × Fail

Any Text WCAG AAA × Fail

# Black Background



This preview shows how the Decimal color 13741227 looks on a black background.

## Color Contrast Check

Large Text (above 18pt) WCAG AA ✓ Pass

Any Text WCAG AA ✓ Pass

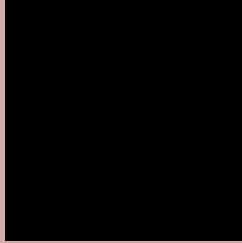
Large Text (above 18pt) WCAG AAA ✓ Pass

Any Text WCAG AAA ✓ Pass

If you want to check with other color combinations, try the [Color Contrast Checker](#).



## Decimal 13741227 Background



This preview shows how black text looks on a background with the Decimal color 13741227.



This preview shows how white text looks on a background with the Decimal color 13741227.

# Color Blindness Simulation

Color vision deficiency is a very complex topic, and I could not describe the different causes any better than Wikipedia does, so if you want to learn more, you should check out their [article about color blindness](#).

## Dichromacy



**Original Color**  
13741227

**Protanopia**  
12170415

**Deuteranopia**  
13283242



**Tritanopia**  
13871799

# Trichromacy



**Original Color**  
13741227

**Protanomaly**  
12759470

**Deuteranomaly**  
13479594

**Tritanomaly**  
13806515

# Monochromacy



**Original Color**  
13741227

**Achromatopsia**  
12040119

**Achromatomaly**  
12628915

# CSS Examples

## Text

The CSS property to change the color of the text to Decimal 13741227 is called "color". The color property can be set on classes, ids or directly on the HTML element.

This example shows how text in the color #D1ACAB looks like.

```
.text, #text, p{  
    color:#D1ACAB  
}
```

If you want to add a text shadow in that color use the text-shadow property, you can generate a text shadow directly with our [CSS Text Shadow Generator](#).

Here you see how black text with a 4 pixel #D1ACAB colored shadow looks like.

```
.shadow{ text-shadow: 4px 4px 2px #D1ACAB
}
```

## Border

The CSS property to change the border of an element to Decimal 13741227 is called "border". The border property can be set on classes, ids or directly on the HTML element.

This example shows the color as border, it can be applied via the CSS property "border" or "border-color".

```
.border, #border, table{ border:4px solid
#D1ACAB }
```

If only the border color should be changed use the property `border-color`.

```
.border{ border-color:#D1ACAB }
```

If you want to add a box shadow in that color use:

Here you see how a box with a 4 pixel #D1ACAB colored shadow looks like.

```
.boxshadow{ -moz-box-shadow:4px 4px 4px  
4px #D1ACAB; -webkit-box-shadow:4px 4px  
4px 4px #D1ACAB; box-shadow:4px 4px 4px  
4px #D1ACAB }
```

# Background

The CSS property to change the background color of an element to Decimal 13741227 is called "background". The background property can be set on classes, ids or directly on the HTML element.

```
.background, #background, body{  
background:#D1ACAB }
```

If only the background color should be changed can be used:

```
.background{ background-color:#D1ACAB }
```

This example shows the color as background, it is applied via the CSS property "background".

To optimize and compress your CSS code, you can use our [online CSS compressor and optimizer](#) based on csstidy. If you want to create a linear or radial gradient as background or border, check our [CSS Gradient Generator](#).



Hey! You found this booklet interesting? Support Converting Colors with the new Membership Option!

The pro membership hides all ads, plus gives you double the colors in the color bucket, and more awesome pro features!

**[Learn more, Memberships starting at \\$2.50/m!](#)**

**Follow me  
on Twitter!**

@ConvertingColor