

Converting Colors

Decimal(13741447)

Have a look what the booklet for
Decimal(13741447) contains.

Decimal(13741447)	3
<i>Conversions</i>	4
<i>Details</i>	6
<i>Harmonies</i>	11
<i>Previews</i>	23
<i>Color Blindness Simulation</i>	26
<i>CSS Examples</i>	29

Color

Decimal(13741447)

Conversions

Conversions Part 1

Format	Color
Hex	D1AD87
RGB	209, 173, 135
RGB Percent	82%, 68%, 53%
CMY	0.1804, 0.3216, 0.4706
CMYK	0.00, 0.17, 0.35, 0.18
HSL	31°, 45%, 67%
HSV	31°, 35%, 82%
XYZ	45.6112, 45.1917, 29.2406
YIQ	179.4320, 33.6540, -4.1860

Conversions

Conversions Part 2

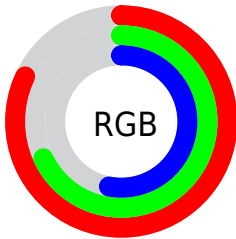
Format	Color
R _Y B	205, 209, 135
Decimal	13741447
CIE Lab	73.02, 7.76, 24.44
CIE LCh	73, 25.646, 72.396
Yxy	45.1917, 0.3800, 0.3765
Android (android.graphics.Color)	4291931527 (0xFFD1AD87)
YUV	179.4320, -21.9050, 25.9311
Hunter-Lab	67.2248, 3.4668, 21.2681

Details

The Decimal color **13741447** is a light color, and the websafe version is hex **CC9966**. A complement of this color would be **8891345**, and the grayscale version is **11842740**.

A 20% lighter version of the original color is **16770236**, and **10058069** is the 20% darker color. If you saturate the color by 10%, you get **13738866**, and if you desaturate by 10%, it is **13744028**.

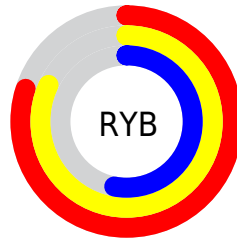
Distribution



Red (82%)

Green (68%)

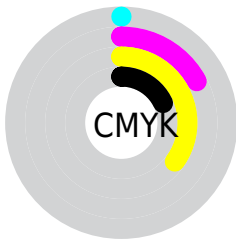
Blue (53%)



Red (80%)

Yellow (82%)

Blue (53%)

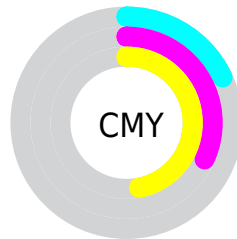


Cyan (0%)

Magenta (17%)

Yellow (35%)

Black (18%)



Cyan (18%)

Magenta (32%)

Yellow (47%)

Brightness & Saturation Gradients

These gradients show how the Decimal color 13741447 changes by changing the brightness by 10 percent. The first figure shows a shift by +10% for each color and the second figure -10%.

Similar to the brightness gradients but the following saturation gradients show a change of the Decimal color 13741447 by changing the saturation by 10% instead.

 13741447

 13741447

16777215

 11899501

 16770236

 10058069

 16777176

 8282173

 16777205

 6572071

 4928018

 3349760

 1836032

 0

 13741447

 13741447

 13738866

 13744028

 13736285

 13746609

 13733448

 13749446

 13730867

 13752027

 13728287

 13754608

 13725706

 13757183

 13724416

 13759743

 13762303

 13762559

Harmonies

Analogous

The Analogous color harmony consists of three colors that are next to each other on the color wheel.



14722709



13741447



12301701

Triad

The Triadic color harmony groups three colors that are evenly spaced from another and form a triangle on the color wheel.



13741447



7520700



12823254

Complementary

The Complementary color scheme is a pair of colors which are on the opposite of each other on the color wheel.



13741447



8891345

Split Complementary

Split-complementary colors differ from the complementary color scheme. The scheme consists of three colors, the original color and two neighbors of the complement color.



10793697



13741447



7389138

Square

The Square scheme is like the rectangle color scheme, but the four colors are evenly spaced on the color wheel.



13741447



8830884



8698335



14263490

Rectangle

The Rectangle color scheme consists of four colors that form a rectangle on the color wheel.



13741447



11123083



8698335



12168667

Sweetspot

The Sweet Spot groups the original color and five complimentary colors.



13741447



16773603



13731756



8419183



0



8421504

Same Dimension

The Same Dimension uses a secret algorithm to generate beautiful new colors.



13741447



16763796



13750663



6906718



11032064



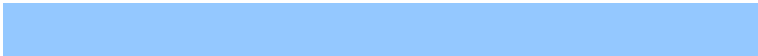
2692352

Inverse Universe

The Inverse Universe completely reimagines the original color for something new.



8891345



9750783



8882129



6185833



21160



5161

Previews

White Background



This preview shows how the Decimal color 13741447 looks on a white background.

Color Contrast Check

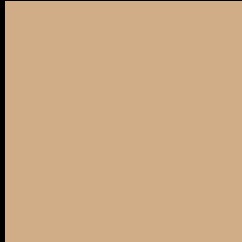
Large Text (above 18pt) WCAG AA × Fail

Any Text WCAG AA × Fail

Large Text (above 18pt) WCAG AAA × Fail

Any Text WCAG AAA × Fail

Black Background



This preview shows how the Decimal color 13741447 looks on a black background.

Color Contrast Check

Large Text (above 18pt) WCAG AA ✓ Pass

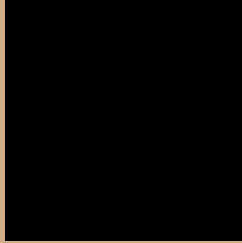
Any Text WCAG AA ✓ Pass

Large Text (above 18pt) WCAG AAA ✓ Pass

Any Text WCAG AAA ✓ Pass

If you want to check with other color combinations, try the [Color Contrast Checker](#).

Decimal 13741447 Background



This preview shows how black text looks on a background with the Decimal color 13741447.




This preview shows how white text looks on a background with the Decimal color 13741447.

Color Blindness Simulation

Color vision deficiency is a very complex topic, and I could not describe the different causes any better than Wikipedia does, so if you want to learn more, you should check out their [article about color blindness](#).

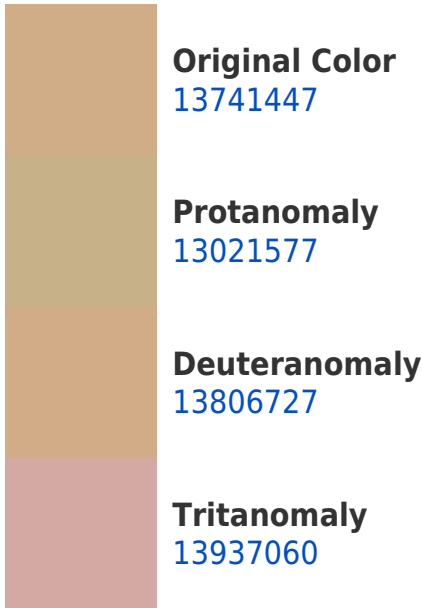
Dichromacy





Tritanopia
14067636

Trichromacy



Monochromacy



CSS Examples

Text

The CSS property to change the color of the text to Decimal 13741447 is called "color". The color property can be set on classes, ids or directly on the HTML element.

This example shows how text in the color #D1AD87 looks like.

```
.text, #text, p{  
    color:#D1AD87  
}
```

If you want to add a text shadow in that color use the text-shadow property, you can generate a text shadow directly with our [CSS Text Shadow Generator](#).

Here you see how black text with a 4 pixel #D1AD87 colored shadow looks like.

```
.shadow{ text-shadow: 4px 4px 2px #D1AD87
}
```

Border

The CSS property to change the border of an element to Decimal 13741447 is called "border". The border property can be set on classes, ids or directly on the HTML element.

This example shows the color as border, it can be applied via the CSS property "border" or "border-color".

```
.border, #border, table{ border:4px solid
#D1AD87 }
```

If only the border color should be changed use the property `border-color`.

```
.border{ border-color:#D1AD87 }
```

If you want to add a box shadow in that color use:

Here you see how a box with a 4 pixel #D1AD87 colored shadow looks like.

```
.boxshadow{ -moz-box-shadow:4px 4px 4px  
4px #D1AD87; -webkit-box-shadow:4px 4px  
4px 4px #D1AD87; box-shadow:4px 4px 4px  
4px #D1AD87 }
```

Background

The CSS property to change the background color of an element to Decimal 13741447 is called "background". The background property can be set on classes, ids or directly on the HTML element.

```
.background, #background, body{  
background:#D1AD87 }
```

If only the background color should be changed can be used:

```
.background{ background-color:#D1AD87 }
```

This example shows the color as background, it is applied via the CSS property "background".

To optimize and compress your CSS code, you can use our [online CSS compressor and optimizer](#) based on csstidy. If you want to create a linear or radial gradient as background or border, check our [CSS Gradient Generator](#).

Hey! You found this booklet interesting? Support Converting Colors with the new Membership Option!

The pro membership hides all ads, plus gives you double the colors in the color bucket, and more awesome pro features!

[Learn more, Memberships starting at \\$2.50/m!](#)

**Follow me
on Twitter!**

@ConvertingColor