

Converting Colors

Decimal(13741488)

Have a look what the booklet for
Decimal(13741488) contains.

Decimal(13741488)	3
<i>Conversions</i>	4
<i>Details</i>	6
<i>Harmonies</i>	11
<i>Previews</i>	23
<i>Color Blindness Simulation</i>	26
<i>CSS Examples</i>	29

Color

Decimal(13741488)

Conversions

Conversions Part 1

Format	Color
Hex	D1ADB0
RGB	209, 173, 176
RGB Percent	82%, 68%, 69%
CMY	0.1804, 0.3216, 0.3098
CMYK	0.00, 0.17, 0.16, 0.18
HSL	355°, 28%, 75%
HSV	355°, 17%, 82%
XYZ	49.0745, 46.5770, 47.4781
YIQ	184.1060, 20.4930, 8.5650

Conversions

Conversions Part 2

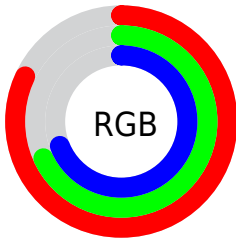
Format	Color
R _Y B	209, 173, 176
Decimal	13741488
CIE Lab	73.92, 13.54, 3.37
CIE LCh	74, 13.955, 13.977
Yxy	46.5770, 0.3429, 0.3254
Android (android.graphics.Color)	4291931568 (0xFFD1ADB0)
YUV	184.1060, -3.9963, 21.8320
Hunter-Lab	68.2474, 8.9208, 6.5265

Details

The Decimal color **13741488** is a light color, and the websafe version is hex **CC9999**. A complement of this color would be **11391438**, and the grayscale version is **12105912**.

A 20% lighter version of the original color is **16770536**, and **10123644** is the 20% darker color. If you saturate the color by 10%, you get **13736093**, and if you desaturate by 10%, it is **13746883**.

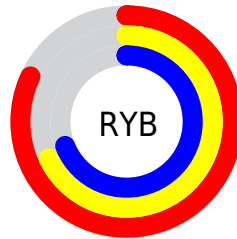
Distribution



Red (82%)

Green (68%)

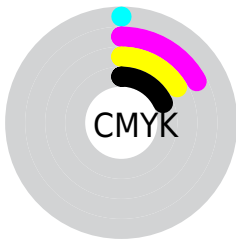
Blue (69%)



Red (82%)

Yellow (68%)

Blue (69%)

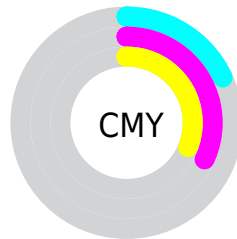


Cyan (0%)

Magenta (17%)

Yellow (16%)

Black (18%)



Cyan (18%)

Magenta (32%)

Yellow (31%)

Brightness & Saturation Gradients

These gradients show how the Decimal color 13741488 changes by changing the brightness by 10 percent. The first figure shows a shift by +10% for each color and the second figure -10%.

Similar to the brightness gradients but the following saturation gradients show a change of the Decimal color 13741488 by changing the saturation by 10% instead.

 13741488

 13741488

16777215

 11899541

 16770536

 10123644

 8413283

 6703179

 5124404

 3546143

 2228999

 0

 13741488

 13741488

 13736093

 13746883

 13730698

 13752278

 13725303

 13757673

 13719907

 13762557

 13714768

 13762559

 13709373

 13703978

 13698583

 13697041

Harmonies

Analogous

The Analogous color harmony consists of three colors that are next to each other on the color wheel.



13414077



13741488



13610916

Triad

The Triadic color harmony groups three colors that are evenly spaced from another and form a triangle on the color wheel.



13741488



11254435



10533326

Complementary

The Complementary color scheme is a pair of colors which are on the opposite of each other on the color wheel.



13741488



11391438

Split Complementary

Split-complementary colors differ from the complementary color scheme. The scheme consists of three colors, the original color and two neighbors of the complement color.



9878727



13741488



10403246

Square

The Square scheme is like the rectangle color scheme, but the four colors are evenly spaced on the color wheel.



13741488



12236701



9878971



11515342

Rectangle

The Rectangle color scheme consists of four colors that form a rectangle on the color wheel.



13741488



13283743



9878971



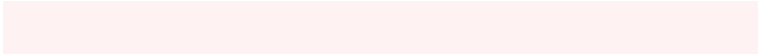
10271436

Sweetspot

The Sweet Spot groups the original color and five complimentary colors.



13741488



16773875



13544913



8419448



0



8421504

Same Dimension

The Same Dimension uses a secret algorithm to generate beautiful new colors.



13741488



16763342



13745325



6905439



11010062



2686979

Inverse Universe

The Inverse Universe completely reimagines the original color for something new.



13741488



16763342



11387601



6905439



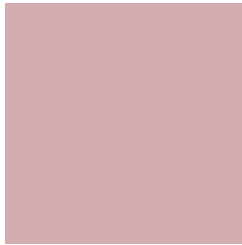
11010062



2686979

Previews

White Background



This preview shows how the Decimal color 13741488 looks on a white background.

Color Contrast Check

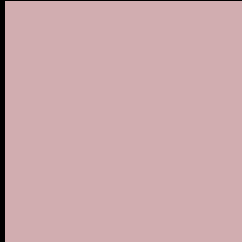
Large Text (above 18pt) WCAG AA × Fail

Any Text WCAG AA × Fail

Large Text (above 18pt) WCAG AAA × Fail

Any Text WCAG AAA × Fail

Black Background



This preview shows how the Decimal color 13741488 looks on a black background.

Color Contrast Check

Large Text (above 18pt) WCAG AA ✓ Pass

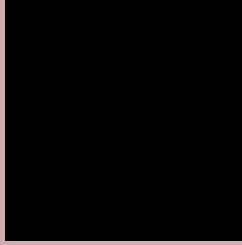
Any Text WCAG AA ✓ Pass

Large Text (above 18pt) WCAG AAA ✓ Pass

Any Text WCAG AAA ✓ Pass

If you want to check with other color combinations, try the [Color Contrast Checker](#).

Decimal 13741488 Background



This preview shows how black text looks on a background with the Decimal color 13741488.



This preview shows how white text looks on a background with the Decimal color 13741488.

Color Blindness Simulation

Color vision deficiency is a very complex topic, and I could not describe the different causes any better than Wikipedia does, so if you want to learn more, you should check out their [article about color blindness](#).

Dichromacy





Tritanopia
13806777

Trichromacy



Original Color
13741488

Protanomaly
12759731

Deuteranomaly
13479855

Tritanomaly
13806774

Monochromacy



Original Color
13741488

Achromatopsia
12105912

Achromatomaly
12694709

CSS Examples

Text

The CSS property to change the color of the text to Decimal 13741488 is called "color". The color property can be set on classes, ids or directly on the HTML element.

This example shows how text in the color #D1ADB0 looks like.

```
.text, #text, p{  
    color:#D1ADB0  
}
```

If you want to add a text shadow in that color use the text-shadow property, you can generate a text shadow directly with our [CSS Text Shadow Generator](#).

Here you see how black text with a 4 pixel #D1ADB0 colored shadow looks like.

```
.shadow{ text-shadow: 4px 4px 2px #D1ADB0  
}
```

Border

The CSS property to change the border of an element to Decimal 13741488 is called "border". The border property can be set on classes, ids or directly on the HTML element.

This example shows the color as border, it can be applied via the CSS property "border" or "border-color".

```
.border, #border, table{ border:4px solid  
#D1ADB0 }
```

If only the border color should be changed use the property `border-color`.

```
.border{ border-color:#D1ADB0 }
```

If you want to add a box shadow in that color use:

Here you see how a box with a 4 pixel #D1ADB0 colored shadow looks like.

```
.boxshadow{ -moz-box-shadow:4px 4px 4px  
4px #D1ADB0; -webkit-box-shadow:4px 4px  
4px 4px #D1ADB0; box-shadow:4px 4px 4px  
4px #D1ADB0 }
```

Background

The CSS property to change the background color of an element to Decimal 13741488 is called "background". The background property can be set on classes, ids or directly on the HTML element.

```
.background, #background, body{  
background:#D1ADB0 }
```

If only the background color should be changed can be used:

```
.background{ background-color:#D1ADB0 }
```

This example shows the color as background, it is applied via the CSS property "background".

To optimize and compress your CSS code, you can use our [online CSS compressor and optimizer](#) based on csstidy. If you want to create a linear or radial gradient as background or border, check our [CSS Gradient Generator](#).

Hey! You found this booklet interesting? Support Converting Colors with the new Membership Option!

The pro membership hides all ads, plus gives you double the colors in the color bucket, and more awesome pro features!

[Learn more, Memberships starting at \\$2.50/m!](#)

**Follow me
on Twitter!**

@ConvertingColor