

Converting Colors

Decimal(13741719)

Have a look what the booklet for
Decimal(13741719) contains.

Decimal(13741719)	3
<i>Conversions</i>	4
<i>Details</i>	6
<i>Harmonies</i>	11
<i>Previews</i>	23
<i>Color Blindness Simulation</i>	26
<i>CSS Examples</i>	29

Color

Decimal(13741719)

Conversions

Conversions Part 1

Format	Color
Hex	D1AE97
RGB	209, 174, 151
RGB Percent	82%, 68%, 59%
CMY	0.1804, 0.3176, 0.4078
CMYK	0.00, 0.17, 0.28, 0.18
HSL	24°, 39%, 71%
HSV	24°, 28%, 82%
XYZ	47.0165, 46.0618, 35.6909
YIQ	181.8430, 28.2430, 0.2670

Conversions

Conversions Part 2

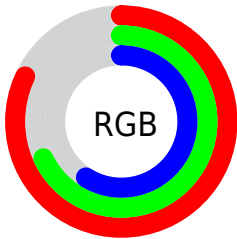
Format	Color
RYB	209, 189, 151
Decimal	13741719
CIELab	73.59, 9.29, 16.56
CIELCh	74, 18.986, 60.708
Yxy	46.0618, 0.3651, 0.3577
Android (android.graphics.Color)	4291931799 (0xFFD1AE97)
YUV	181.8430, -15.2056, 23.8167
Hunter-Lab	67.8688, 4.8863, 16.3287

Details

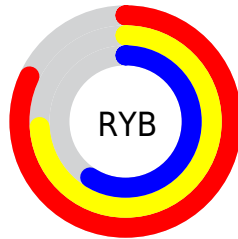
The Decimal color **13741719** is a light color, and the websafe version is hex **CC9999**. A complement of this color would be **9943761**, and the grayscale version is **11974326**.

A 20% lighter version of the original color is **16770509**, and **10123876** is the 20% darker color. If you saturate the color by 10%, you get **13738370**, and if you desaturate by 10%, it is **13745068**.

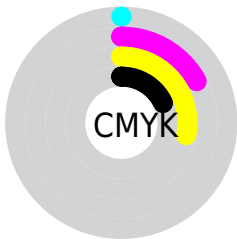
Distribution



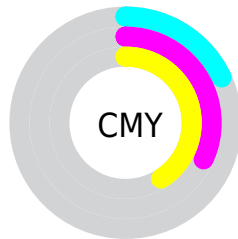
- Red (82%)
- Green (68%)
- Blue (59%)



- Red (82%)
- Yellow (74%)
- Blue (59%)



- Cyan (0%)
- Magenta (17%)
- Yellow (28%)
- Black (18%)



- Cyan (18%)
- Magenta (32%)
- Yellow (41%)

Brightness & Saturation Gradients

These gradients show how the Decimal color 13741719 changes by changing the brightness by 10 percent. The first figure shows a shift by +10% for each color and the second figure -10%.

Similar to the brightness gradients but the following saturation gradients show a change of the Decimal color 13741719 by changing the saturation by 10% instead.

 13741719

 13741719

16777215

 11899773

 16770509


 10123876

 16777193

 8347980

 6637877

 4993568

 3480841

 2032896

 0

 13741719

 13741719

 13738370

 13745068

 13735277

 13748161

 13731928

 13751510

 13728835

 13754603

 13725487

 13757951

 13722138

 13761279

 13719045

 13762559

 13718272

Harmonies

Analogous

The Analogous color harmony consists of three colors that are next to each other on the color wheel.



14264996



13741719



12760210

Triad

The Triadic color harmony groups three colors that are evenly spaced from another and form a triangle on the color wheel.



13741719



9224117



12169427

Complementary

The Complementary color scheme is a pair of colors which are on the opposite of each other on the color wheel.



13741719



9943761

Split Complementary

Split-complementary colors differ from the complementary color scheme. The scheme consists of three colors, the original color and two neighbors of the complement color.



10663639



13741719



8830662

Square

The Square scheme is like the rectangle color scheme, but the four colors are evenly spaced on the color wheel.



13741719



10206627



9354195



13413318

Rectangle

The Rectangle color scheme consists of four colors that form a rectangle on the color wheel.



13741719



11909012



9354195



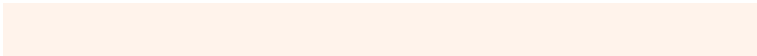
11645653

Sweetspot

The Sweet Spot groups the original color and five complimentary colors.



13741719



16774123



13735867



8419443



0



8421504

Same Dimension

The Same Dimension uses a secret algorithm to generate beautiful new colors.



13741719



16764075



13748887



6906462



11027200



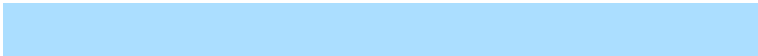
2691072

Inverse Universe

The Inverse Universe completely reimagines the original color for something new.



9943761



11263743



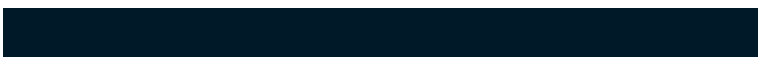
9936593



6186089



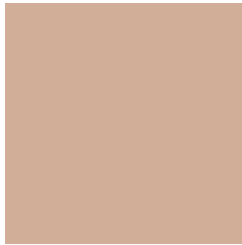
26280



6441

Previews

White Background



This preview shows how the Decimal color 13741719 looks on a white background.

Color Contrast Check

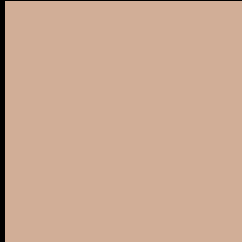
Large Text (above 18pt) WCAG AA × Fail

Any Text WCAG AA × Fail

Large Text (above 18pt) WCAG AAA × Fail

Any Text WCAG AAA × Fail

Black Background



This preview shows how the Decimal color 13741719 looks on a black background.

Color Contrast Check

Large Text (above 18pt) WCAG AA ✓ Pass

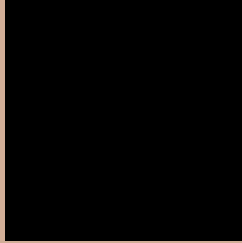
Any Text WCAG AA ✓ Pass

Large Text (above 18pt) WCAG AAA ✓ Pass

Any Text WCAG AAA ✓ Pass

If you want to check with other color combinations, try the [Color Contrast Checker](#).

Decimal 13741719 Background



This preview shows how black text looks on a background with the Decimal color 13741719.



This preview shows how white text looks on a background with the Decimal color 13741719.

Color Blindness Simulation

Color vision deficiency is a very complex topic, and I could not describe the different causes any better than Wikipedia does, so if you want to learn more, you should check out their [article about color blindness](#).

Dichromacy



Original Color
13741719

Protanopia
12498330

Deuteranopia
13741719



Tritanopia
14002615

Trichromacy



Original Color
13741719

Protanomaly
12956313

Deuteranomaly
13741719

Tritanomaly
13937579

Monochromacy



Original Color
13741719

Achromatopsia
11974326

Achromatomaly
12628907

CSS Examples

Text

The CSS property to change the color of the text to Decimal 13741719 is called "color". The color property can be set on classes, ids or directly on the HTML element.

This example shows how text in the color #D1AE97 looks like.

```
.text, #text, p{  
    color:#D1AE97  
}
```

If you want to add a text shadow in that color use the text-shadow property, you can generate a text shadow directly with our [CSS Text Shadow Generator](#).

Here you see how black text with a 4 pixel #D1AE97 colored shadow looks like.

```
.shadow{ text-shadow: 4px 4px 2px #D1AE97
}
```

Border

The CSS property to change the border of an element to Decimal 13741719 is called "border". The border property can be set on classes, ids or directly on the HTML element.

This example shows the color as border, it can be applied via the CSS property "border" or "border-color".

```
.border, #border, table{ border:4px solid
#D1AE97 }
```

If only the border color should be changed use the property `border-color`.

```
.border{ border-color:#D1AE97 }
```

If you want to add a box shadow in that color use:

Here you see how a box with a 4 pixel #D1AE97 colored shadow looks like.

```
.boxshadow{ -moz-box-shadow:4px 4px 4px  
4px #D1AE97; -webkit-box-shadow:4px 4px  
4px 4px #D1AE97; box-shadow:4px 4px 4px  
4px #D1AE97 }
```

Background

The CSS property to change the background color of an element to Decimal 13741719 is called "background". The background property can be set on classes, ids or directly on the HTML element.

```
.background, #background, body{  
background:#D1AE97 }
```

If only the background color should be changed can be used:

```
.background{ background-color:#D1AE97 }
```

This example shows the color as background, it is applied via the CSS property "background".

To optimize and compress your CSS code, you can use our [online CSS compressor and optimizer](#) based on csstidy. If you want to create a linear or radial gradient as background or border, check our [CSS Gradient Generator](#).

Hey! You found this booklet interesting? Support Converting Colors with the new Membership Option!

The pro membership hides all ads, plus gives you double the colors in the color bucket, and more awesome pro features!

[Learn more, Memberships starting at \\$2.50/m!](#)

**Follow me
on Twitter!**

@ConvertingColor